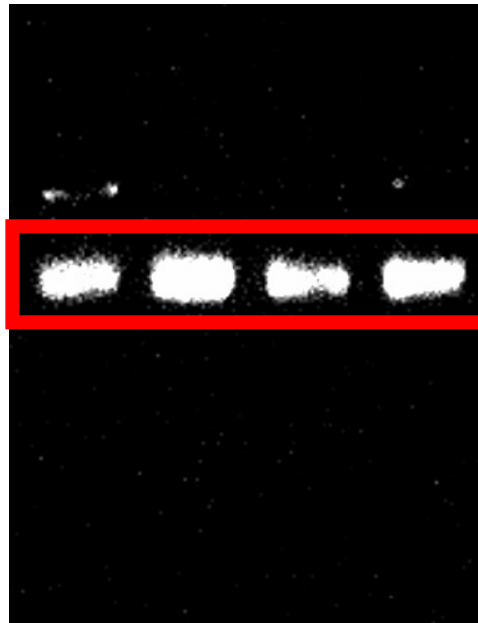
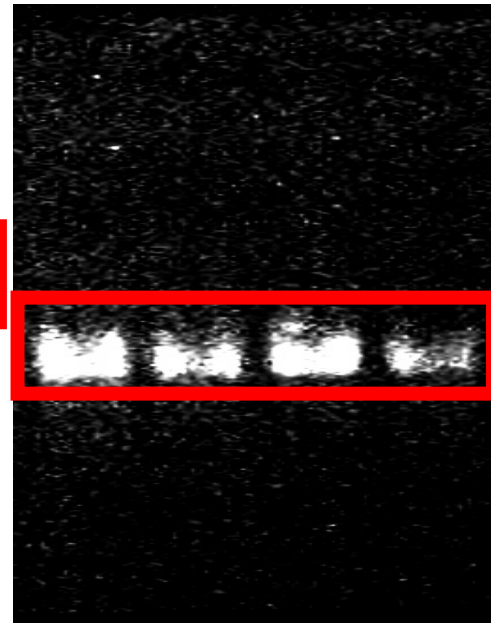


Figure S1. The morphological abnormalities in zebrafish caused by IVM and CYP exposure. Optical micrographs control after incubation with 200 µg/L of IVM and 25 µg/L of CYP for 96 hpf. The IVM caused body axis curvature and pericardial edema on hatched embryos (A), CYP induced pericardial edema on hatched embryos (C). Results for pericardial sac area IVM (C) and CYP (D), and yolk sac area IVM (E) and CYP (F) were measured at 96hpf. Images were taken from the lateral view under a dissecting micro-scope (magnification 25x). Scale bar, 500µm.

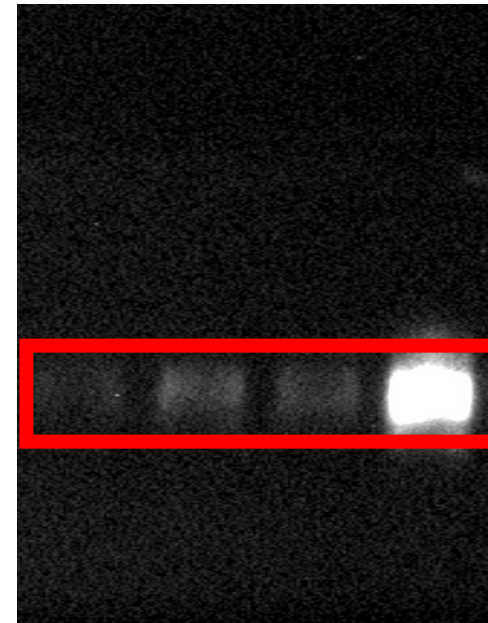
GAPDH
29 Kda



Bcl-2
29 Kda



Bax
29 Kda



iNOS
29 Kda

