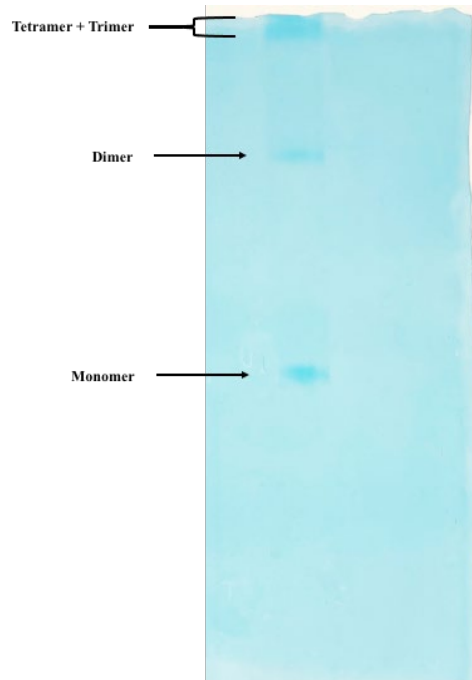
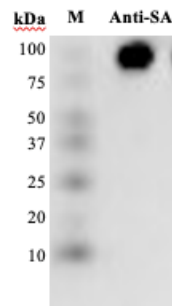
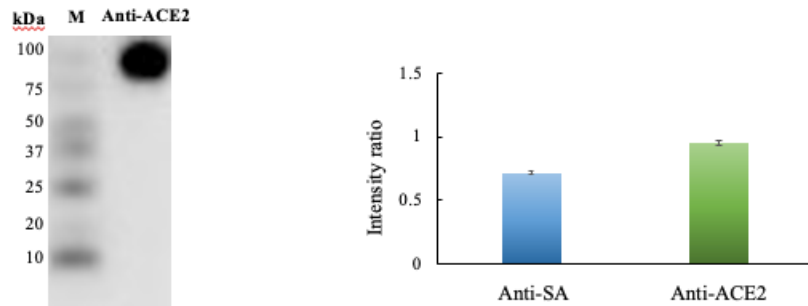


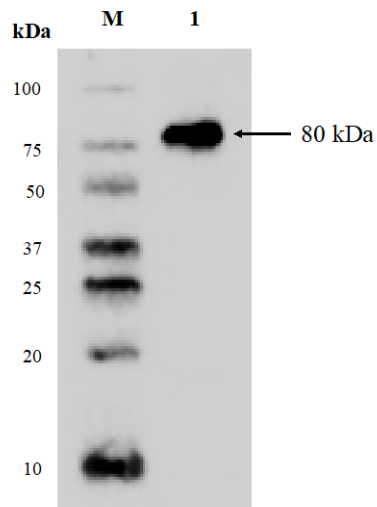
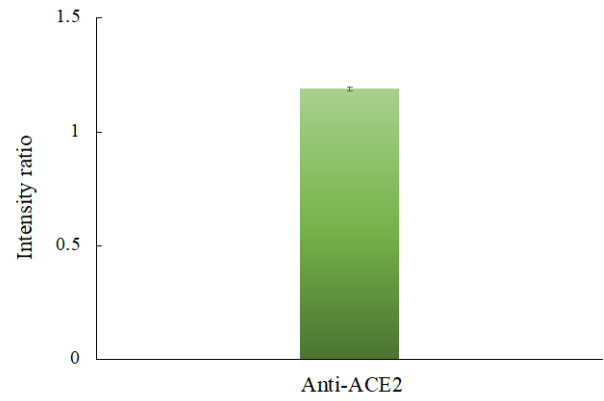
## Supplemental Materials



**Figure S1.** SDS-PAGE gel of ACE2-coreSA fusion protein incubated in the presence of 1% (w/v) SDS and 10% (v/v) mercaptoethanol at 60°C, four bands were detected - upper band is the smear of tetramer and trimer, the middle one is the dimer, and the lower one is the monomer (~94 kDa).

**A****B**

**Figure S2.** (A) Western blots of purified ACE2-coreSA fusion protein with anti-streptavidin and anti-ACE2 antibodies as primary antibodies, respectively. The estimated fusion protein size  $\approx 94$  kDa, M = protein marker; (B) The intensity ratio of each band was calculated using NIH ImageJ software.

**A****B**

**Figure S3.** (A) Western blot of HEK293T-ACE2 (lane 1) using anti-ACE2 mAb and HRP-conjugated mouse IgG secondary antibody. M = protein markers; (B) The intensity ratio of ACE2 Western blot band was calculated by NIH ImageJ software.