

Supplementary Materials

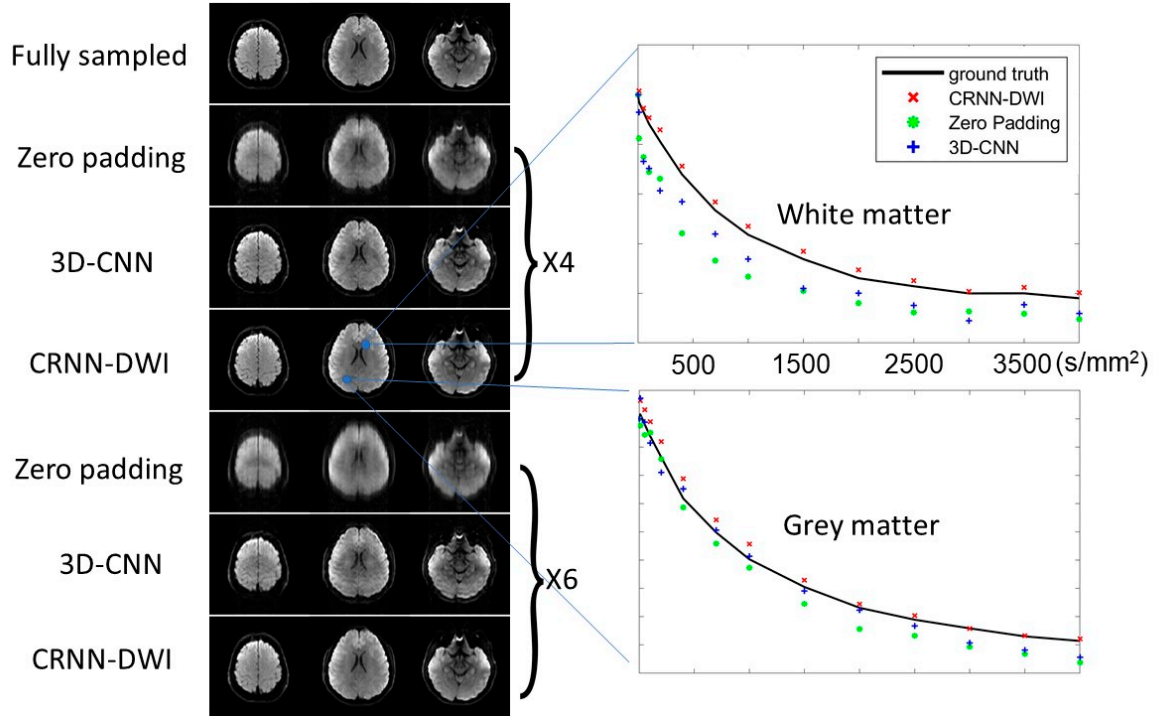


Figure S1. Representative trace-weighted images at $b = 1000 \text{ s/mm}^2$ (left) using different reconstruction methods and the corresponding signal decay curves (right) from two randomly selected ROIs (white matter and gray matter as indicated by the blue areas). The trace-weighted images reconstructed using CRNN-DWI showed excellent image quality even with a six-fold undersampling. The signal decay curves from CRNN-DWI agreed well with the curves from the fully sampling images, whereas the curve from zero-padding and 3D-CNN exhibited substantial deviations.