

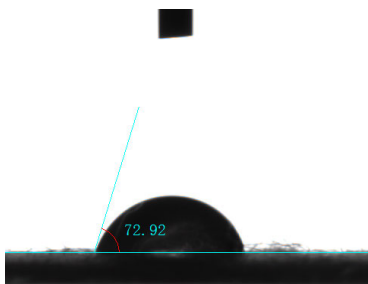
## Supplementary Materials

**Table S1** BET analysis of SHCF

Sample	Surface area (m <sup>2</sup> /g)	Pore volume (cm <sup>3</sup> /g)
SHCF	6.974	0.007

**Table S2.** Elastic modulus of SHCF

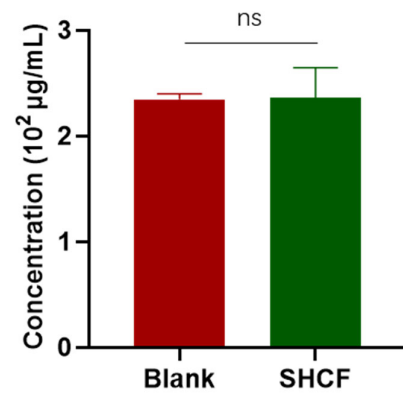
Groups	1	2	3	Mean, SD
Elastic modulus (MPa)	98.8	123.1	110.9	110.9±9.9
Tensile strength (MPa)	2.7	3.0	2.8	2.8±0.1
Elongation (%)	12.0	12.0	8.8	10.9±1.5



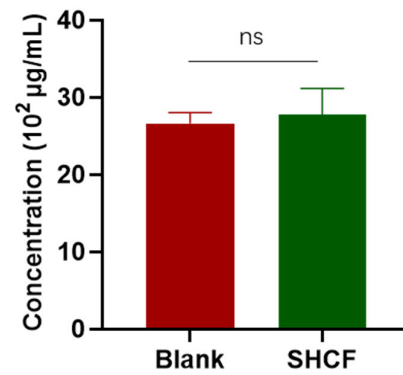
**Figure S1.** Contact angle picture of water droplets with SHCF

**Table S3.** Contact angle and surface free energy of SHCF

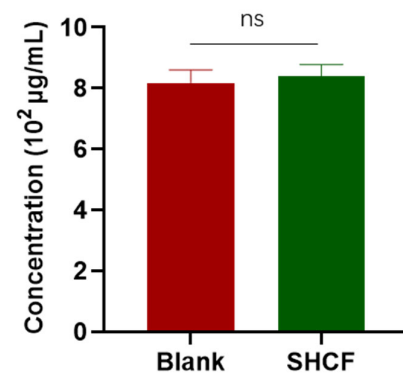
Sample	Contact angle $\theta$ (°)	Surface free energy (mJ·m <sup>-2</sup> )
SHCF	72.01 ± 0.91	37.30 ± 1.4



**Figure S2.** IL-1 $\beta$  concentration values in the blank and SHCF groups. Error bar indicate S.D (n = 3), <sup>ns</sup>p > 0.05.



**Figure S3.** IL-6 concentration values in the blank and SHCF groups. Error bar indicate S.D (n = 3), <sup>ns</sup>p > 0.05.



**Figure S4.** TNF- $\alpha$  concentration values in the blank and SHCF groups. Error bar indicate S.D (n = 3), <sup>ns</sup>p > 0.05.