

Supplementary data of:

Modulation of Synthetic Tracheal Grafts with Extracellular Matrix Coatings

Lumei Liu ^{1,2}, Sayali Dharmadhikari ^{1,2}, Robert A. Pouliot ³, Michael M. Li ², Peter M. Minneci ¹, Zhenghong Tan ⁴, Kimberly Shontz ¹, Jed Johnson ⁵, Susan D. Reynolds ⁶, Christopher K. Breuer ^{1,7}, Daniel J. Weiss ² and Tendy Chiang ^{1,2,*}

¹ Center of Regenerative Medicine, Abigail Wexner Research Institute, Nationwide Children's Hospital, Columbus, OH 43215, USA; lumei.liu@nationwidechildrens.org (L.L.);

Sayali.Dharmadhikari@nationwidechildrens.org (S.D.); pmminneci@gmail.com (P.M.M.);

Kim.Shontz@nationwidechildrens.org (K.S.); christopher.breuer@nationwidechildrens.org (C.K.B.)

² Department of Pediatric Otolaryngology, Nationwide Children's Hospital, Columbus, OH 43205, USA; Michael.Li@osumc.edu

³ Department of Medicine, Larner College of Medicine, University of Vermont, Burlington, VT 05405, USA; Robert.Pouliot@uvm.edu (R.A.P.); daniel.weiss@med.uvm.edu (D.J.W.)

⁴ College of Medicine, The Ohio State University, Columbus, OH 43210, USA; ZhengHong.Tan@osumc.edu

⁵ Nanofiber Solutions, Inc, Columbus, OH 43017, USA; jed.johnson@nanofibersolutions.com

⁶ Center for Perinatal Research, Abigail Wexner Research Institute, Nationwide Children's Hospital, Columbus, OH 43215, USA; Susan.Reynolds@nationwidechildrens.org

⁷ Department of Pediatric Surgery, Nationwide Children's Hospital, Columbus, OH 43205, USA

⁷

* Correspondence: Tendy.Chiang@nationwidechildrens.org; Tel.: +1-(614)-722-6600, Fax: +1-(614)-722-6609

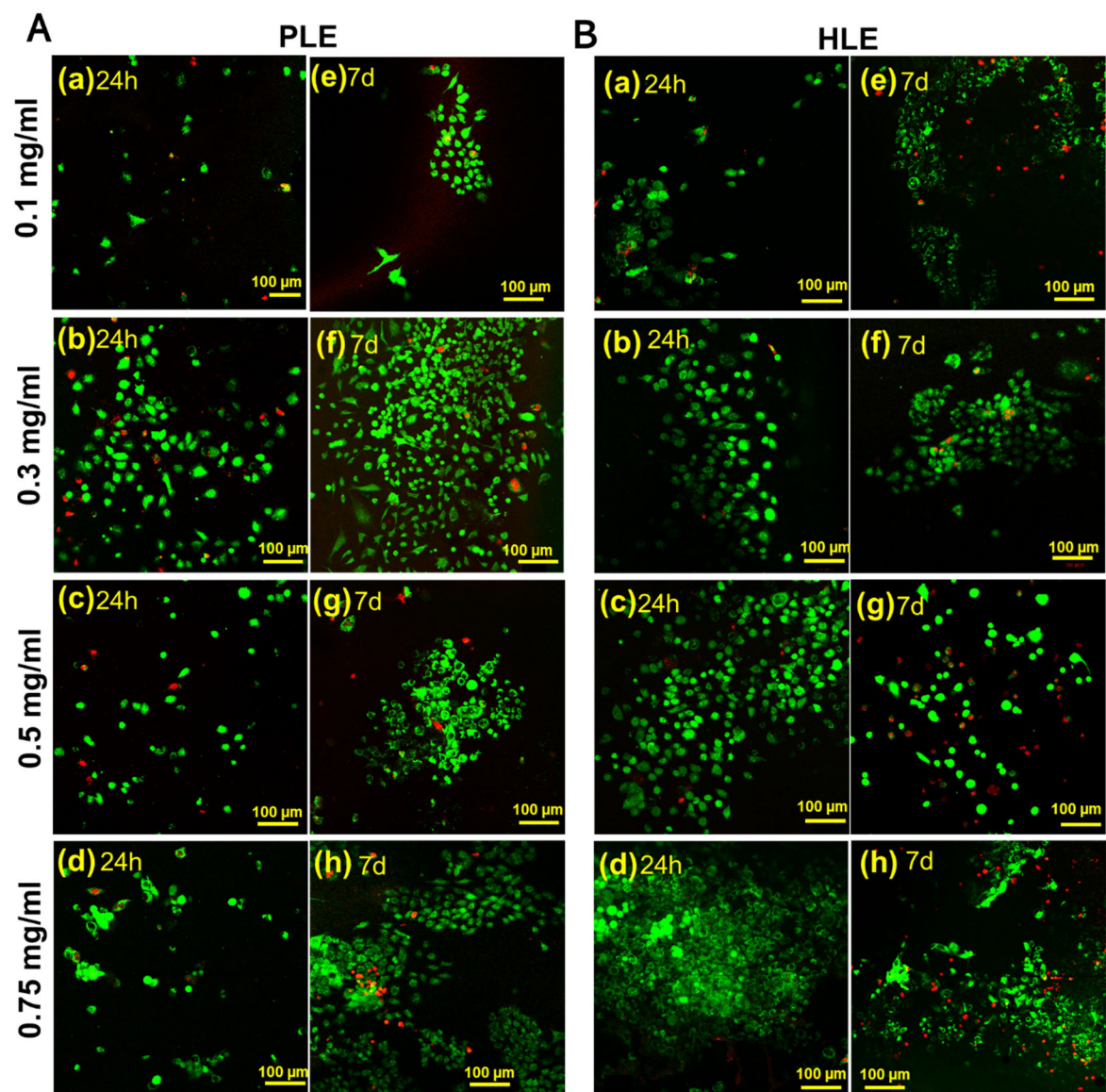


Figure S1. Representative live/dead images of (A) cells on PLE-coated scaffolds for 24h ((a)~(d)) and 7d ((e)~(f)), and (B) cells on HLE-coated scaffolds for 24h ((a)~(d)) and 7d ((e)~(f)). Live cells are stained in green and red cells are stained in red.