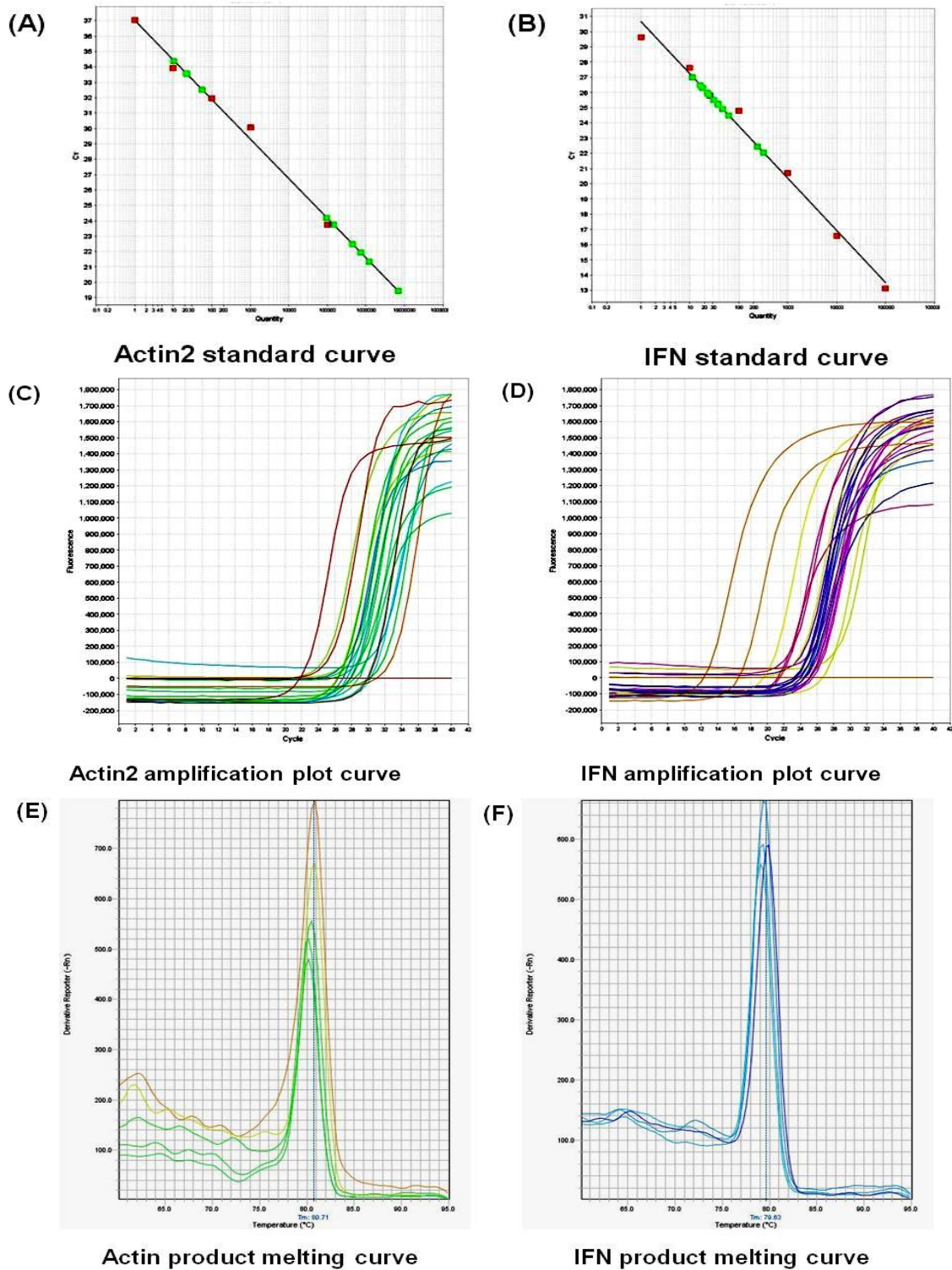
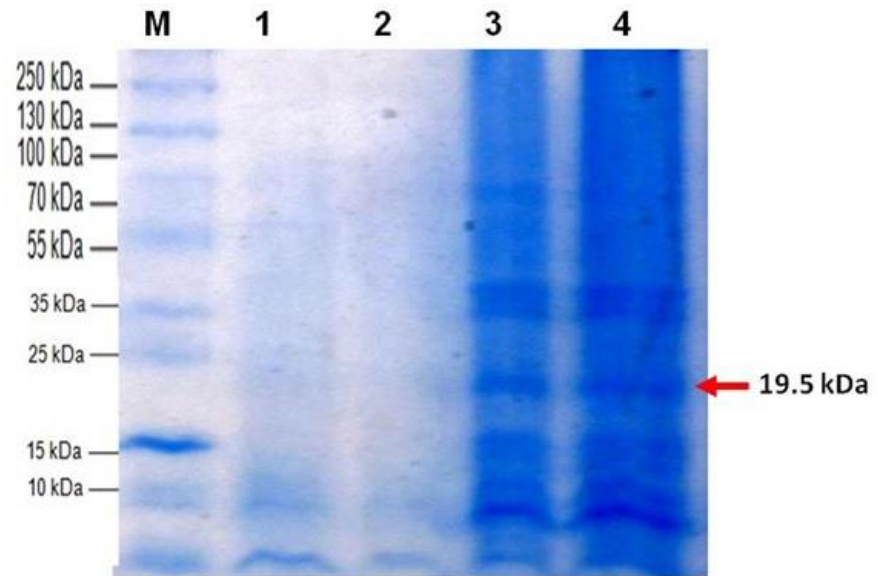


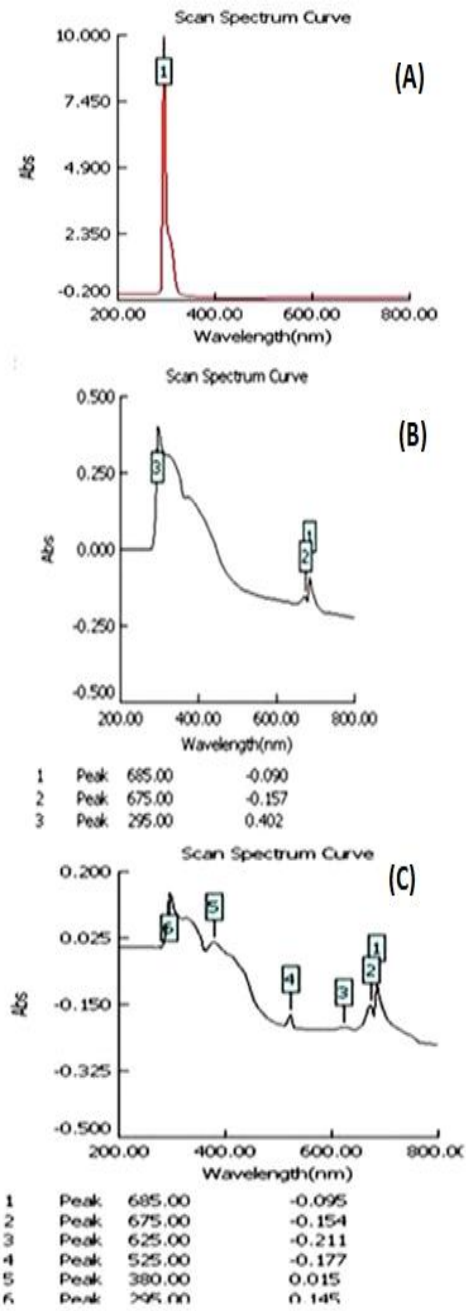
## List of Supplementary Figures



**Figure S1.** qRT-PCR analysis of Actin and IFN $\alpha$ 2a RNA transcripts based on the amplification of a corresponding cDNA by StepOne qRT-PCR system (Applied biosystems, USA).



**Figure S2.** SDS-PAGE of the partially purified IFN $\alpha$ 2a protein isolated from IFN $\alpha$ 2a transgenic white and red *Raphanus sativus* L plants. M: Thermo Scientific™ PageRuler™ Unstained Protein Ladder, lane 1 and 2: partially purified protein isolated from wild type white and red *Raphanus sativus* L plants. Lane 3 and 4: partially purified protein isolated from IFN $\alpha$ 2a transgenic white and red *Raphanus sativus* L plants, respectively.



**Figure S3.** Scanning spectra of peg-IFN protein (A), partially purified protein fractions (B) and unpurified total protein(C) isolated from IFN.wRs-2 transgenic *Raphanus sativus* L plants.