

Figure S1: State of Delaware Water Quality Monitoring Sites. Map showing geographic distribution of all water quality monitoring sites considered in the long-term temperature change analysis. Gray circles indicate sites with significant temperature changes while white circles indicate sites that did not show significant temperature changes. Major basins are color coded and watershed boundaries within major basins are outlined in gray.

Figure S2 (a – l): Temperature Fit Plots – Quarter 1. Sites that showed significant increasing or decreasing water temperature during Quarter 1 (January, February, and March) plotted with fit, 95% confidence limits, and 95% prediction limits.

Figure S3 (a – e): Temperature Fit Plots – Quarter 2. Sites that showed significant increasing or decreasing water temperature during Quarter 2 (April, May, and June) plotted with fit, 95% confidence limits, and 95% prediction limits.

Figure S4 (a – x): Temperature Fit Plots – Quarter 3. Sites that showed significant increasing or decreasing water temperature during Quarter 3 (July, August, and September) plotted with fit, 95% confidence limits, and 95% prediction limits.

Figure S5 (a – j): Temperature Fit Plots – Quarter 4. Sites that showed significant increasing or decreasing water temperature during Quarter 4 (October, November, and December) plotted with fit, 95% confidence limits, and 95% prediction limits.

Figure S6: Water Temperature Change in Delaware – Quarter 1. Map showing water quality sites that showed significant increasing or decreasing temperature changed over time during Quarter 1 (January, February, and March). Red circles indicate increasing (warmer) temperatures and blue circles indicate decreasing (colder) temperatures. Watersheds, including streams and waterbodies, that contained sites with significant changes are highlighted.

Figure S7: Water Temperature Change in Delaware – Quarter 2. Map showing water quality sites that showed significant increasing or decreasing temperature changed over time during Quarter 2 (April, May, and June). Red circles indicate increasing (warmer) temperatures and blue circles indicate decreasing (colder) temperatures. Watersheds, including streams and waterbodies, that contained site with significant changes are highlighted.

Figure S8: Water Temperature Change in Delaware – Quarter 3. Map showing water quality sites that showed significant increasing or decreasing temperature changed over time during Quarter 3 (July, August, and September). Red circles indicate increasing (warmer) temperatures and blue circles indicate decreasing (colder) temperatures. Watersheds, including streams and waterbodies, that contained sites with significant changes are highlighted.

Figure S9: Water Temperature Change in Delaware – Quarter 4. Map showing water quality sites that showed significant increasing or decreasing temperature changed over time during Quarter 4 (October, November, and December). Red circles indicate increasing (warmer) temperatures and blue circles indicate decreasing (colder) temperatures. Watersheds, including streams and waterbodies, that contained sites with significant changes are highlighted.

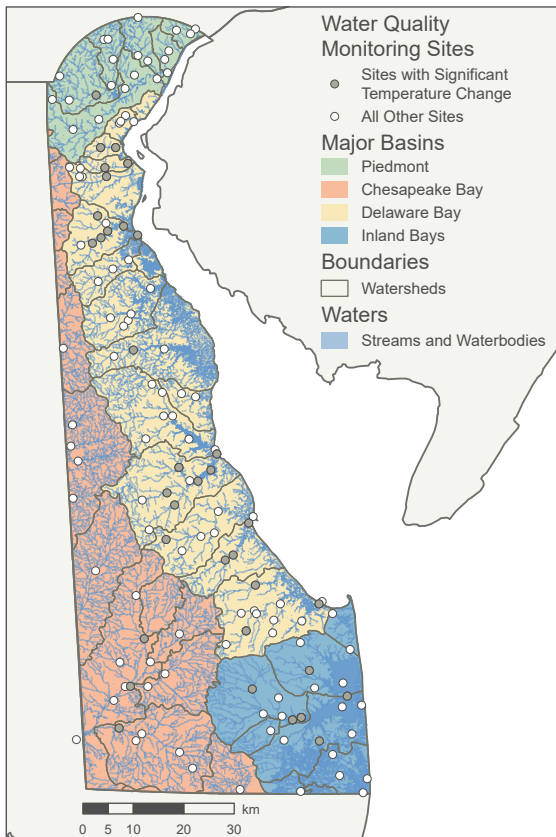


Figure S1

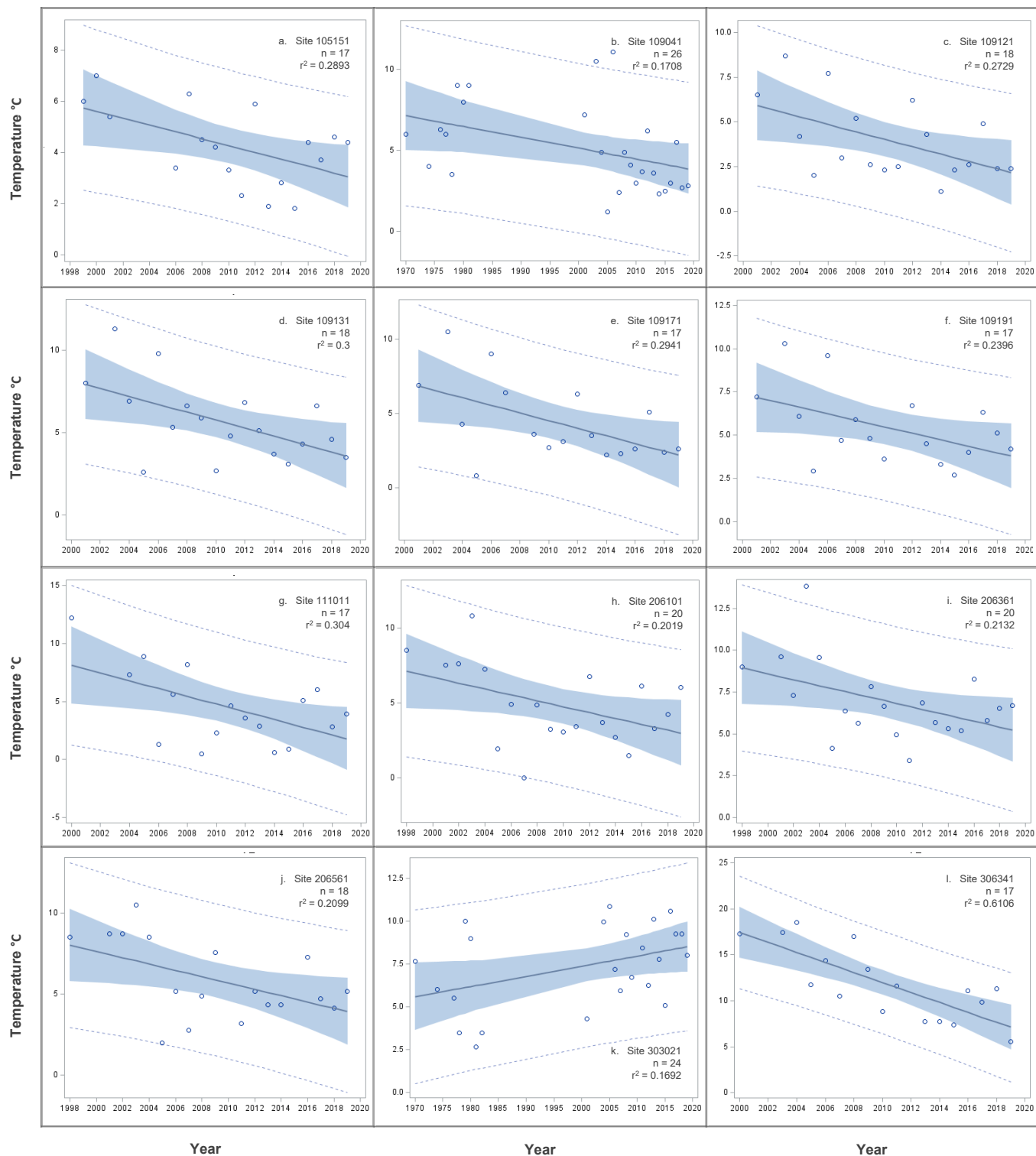


Figure S2

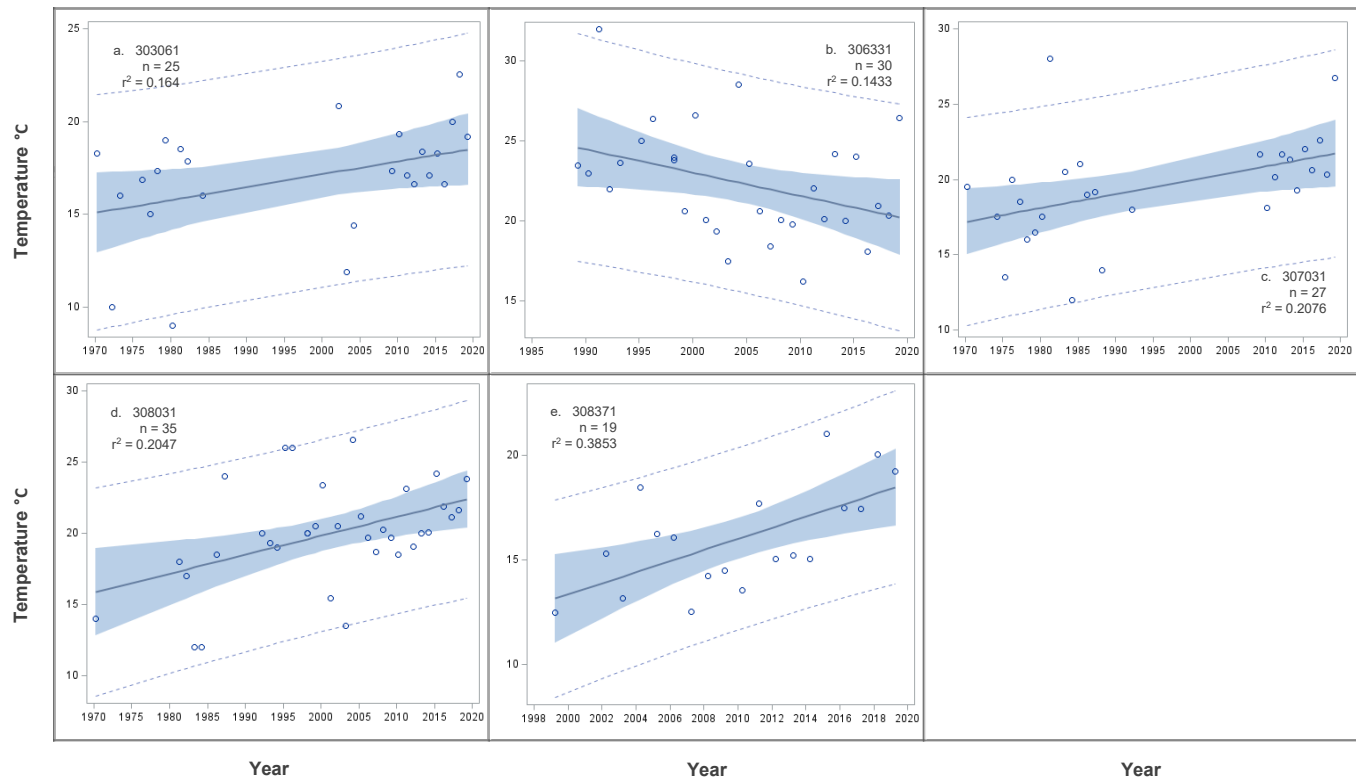


Figure S3

— Fit    95% Confidence Limits    95% Prediction Limits

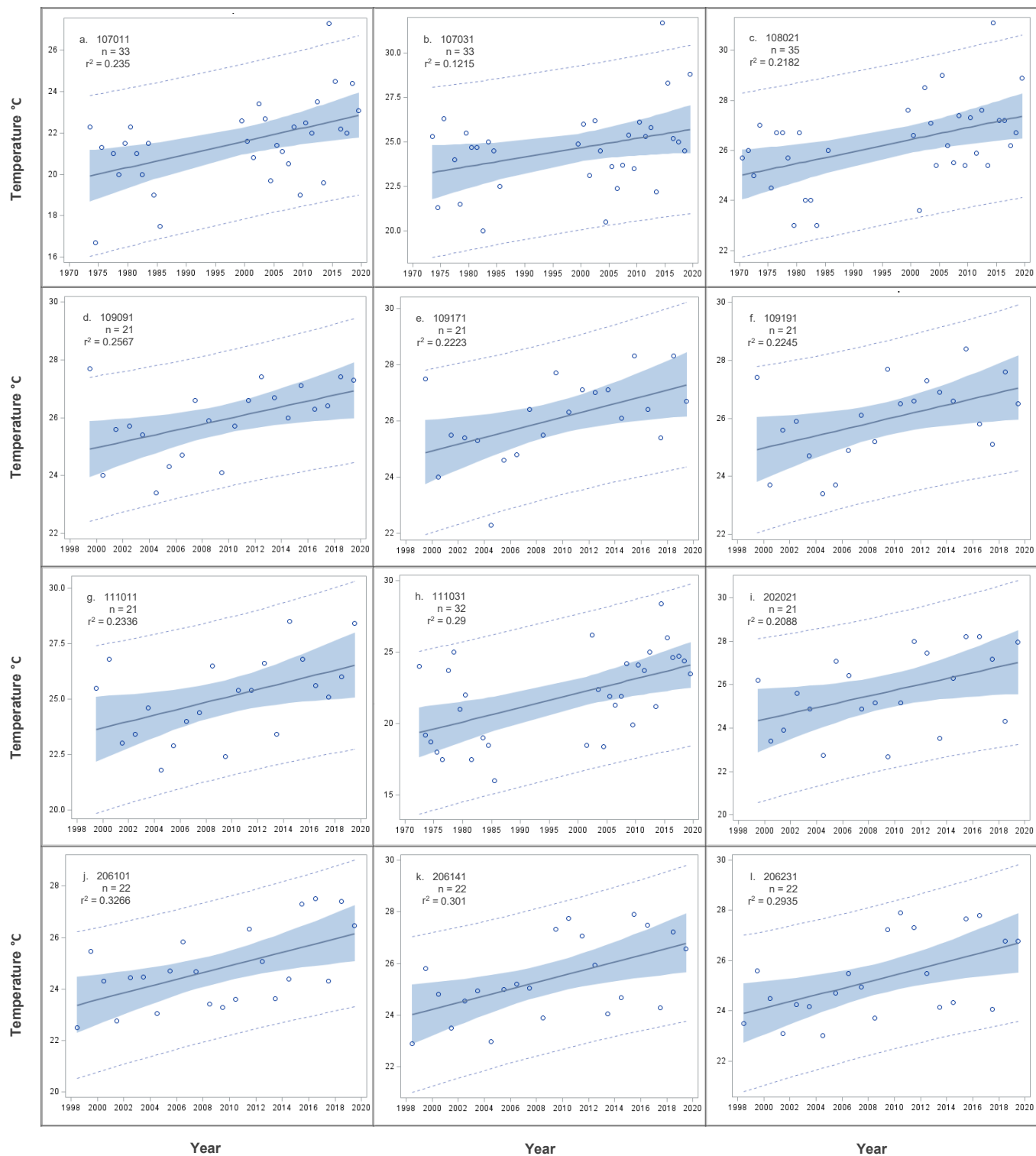


Figure S4

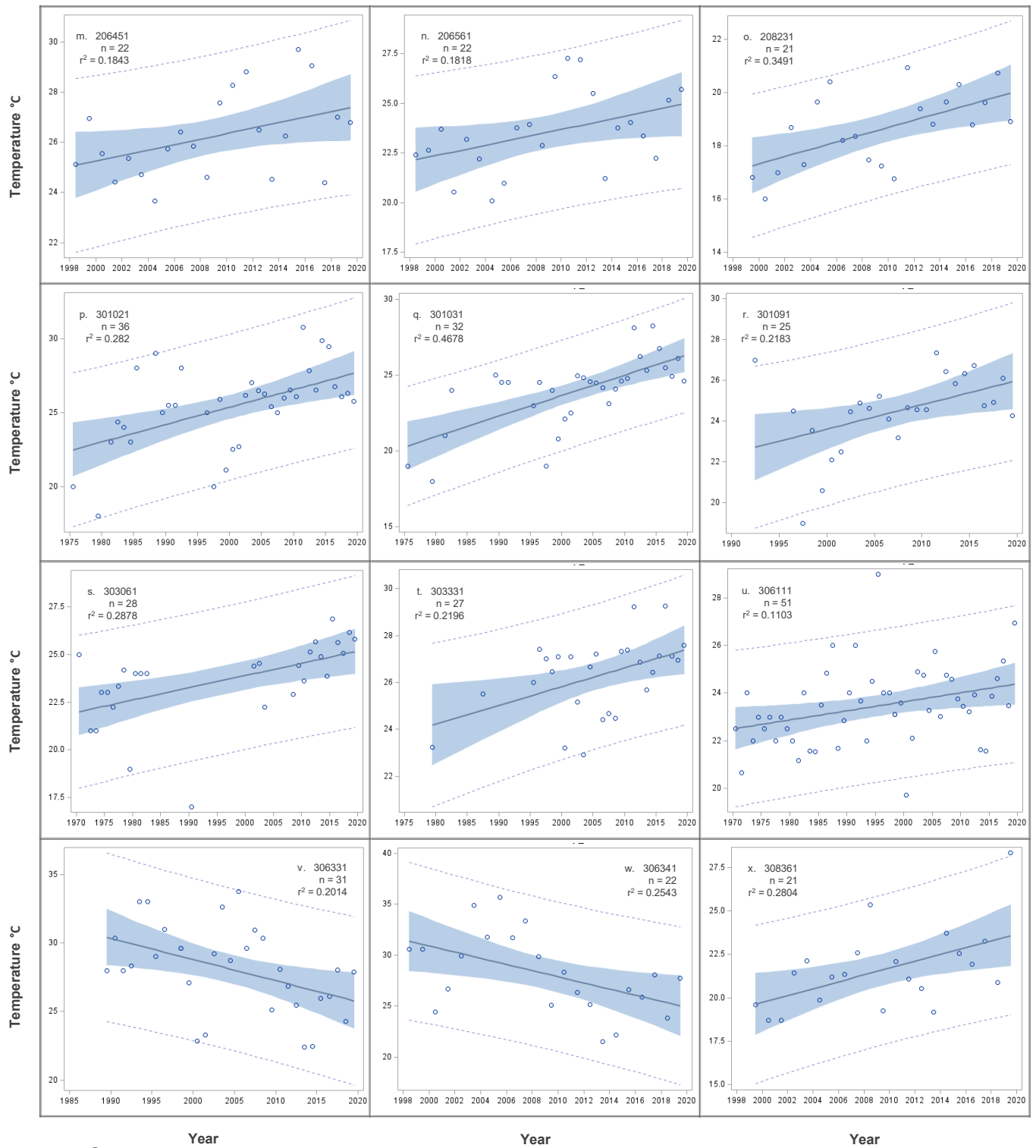


Figure S5

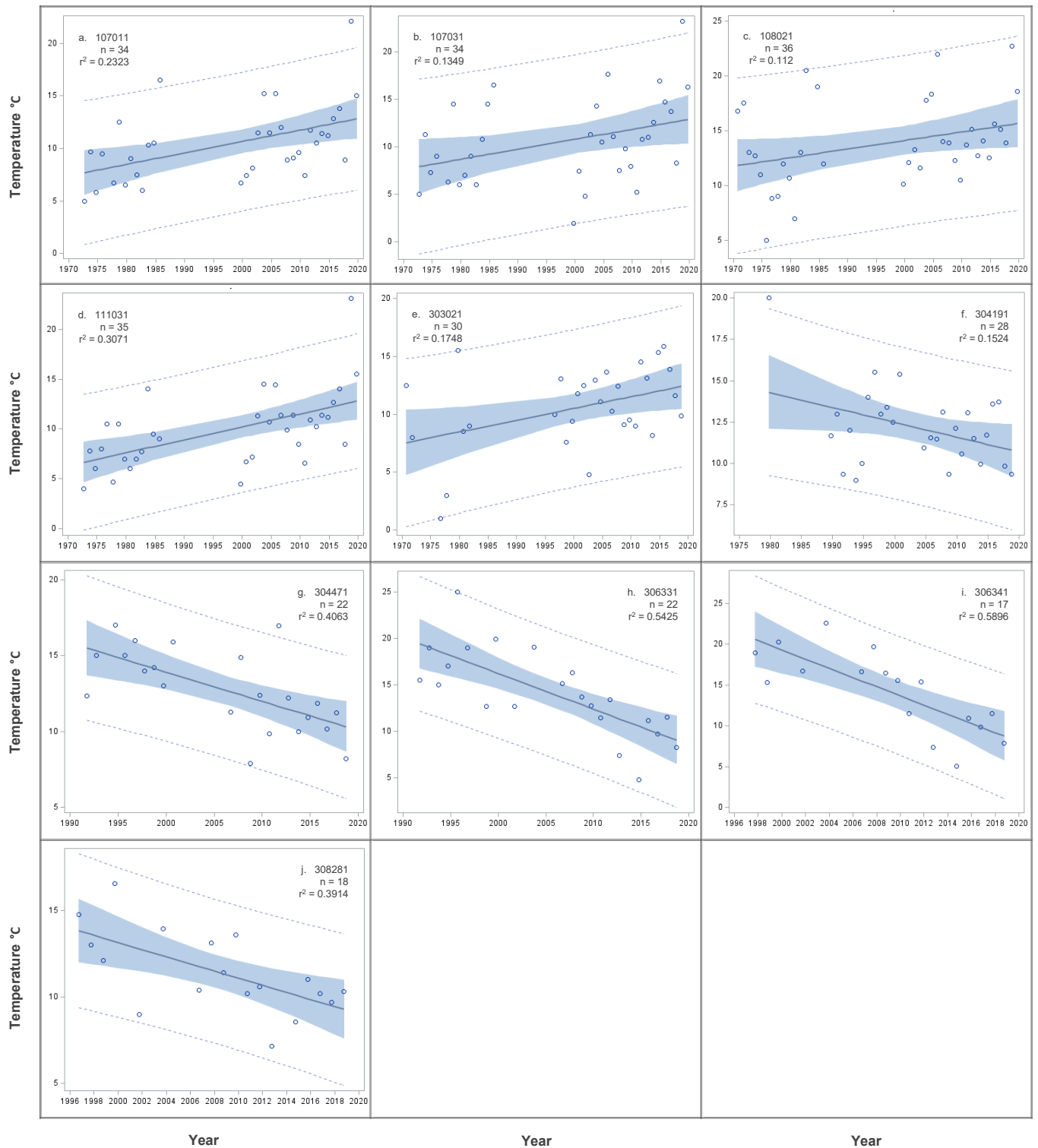


Figure S6

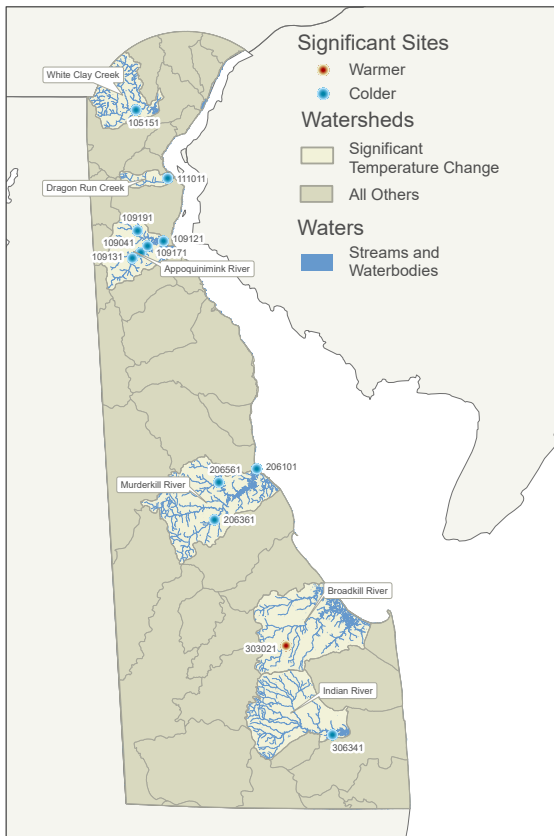


Figure S7



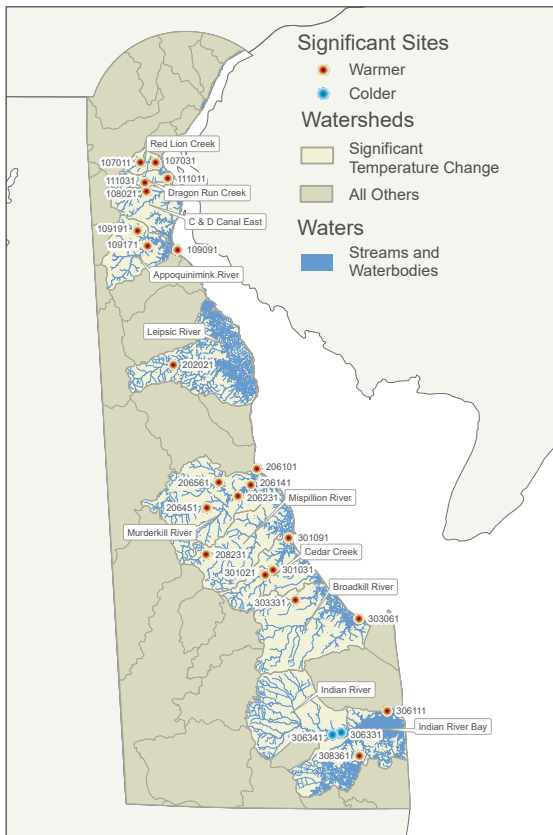


Figure S8

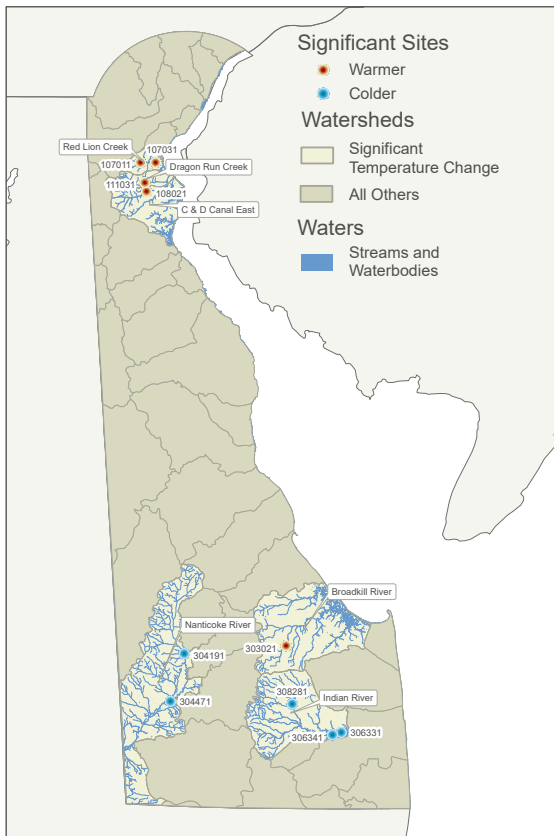


Figure S9