

Figure S1. Kinetic study for the characterization of mixed species biofilms of *C. albicans* and *S. gordonii* using fluorescence microscopy. Mixed biofilms grown in 1:1 media were stained using Concavalin A — Alexa Fluor 488 fungal cell wall stain (green), DAPI nucleic acid stain (blue) and Wheat Germ Agglutinin (red). Scale bar is 100 μm for all panels.

24 h Biofilm Kinetics in BMM

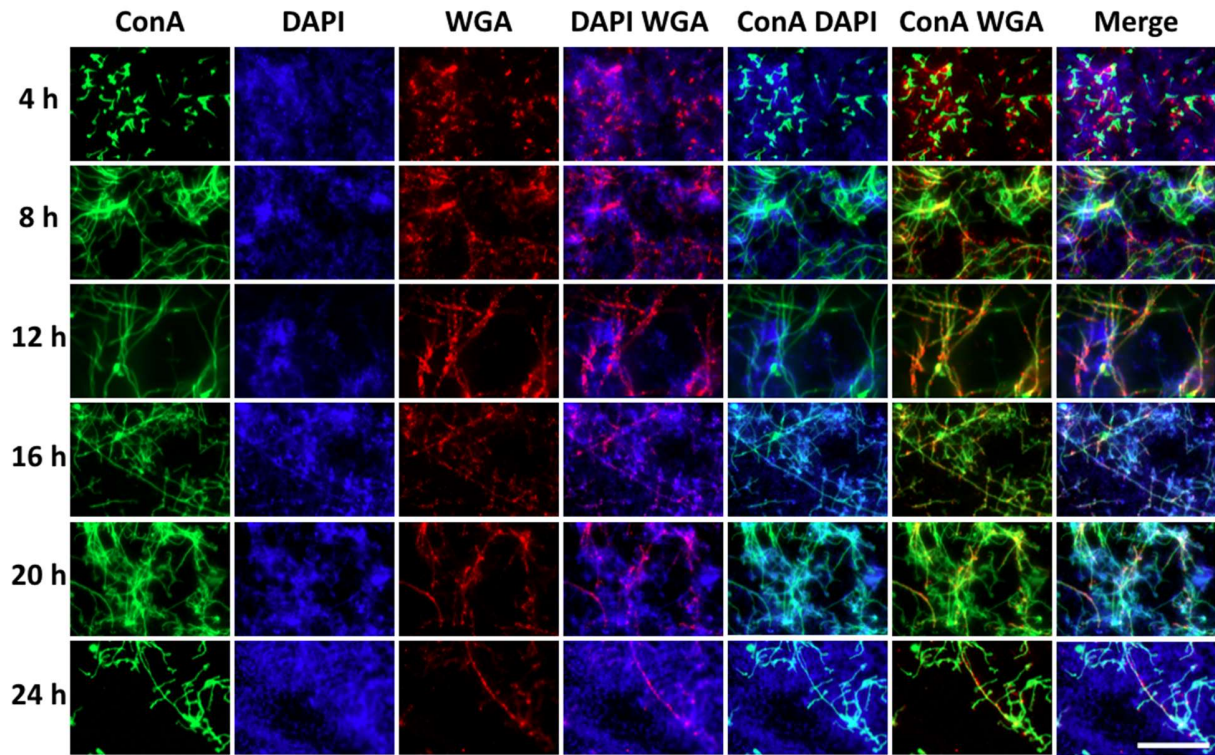


Figure S2. Kinetic study for the characterization of mixed species biofilms of *C. albicans* and *S. gordonii* using fluorescence microscopy. Mixed biofilms grown in BMM synthetic saliva were stained using Concavalin A—Alexa Fluor 488 fungal cell wall stain (green), DAPI nucleic acid stain (blue) and Wheat Germ Agglutinin (red). Scale bar is 100 μm for all panels.

Mixed Biofilms

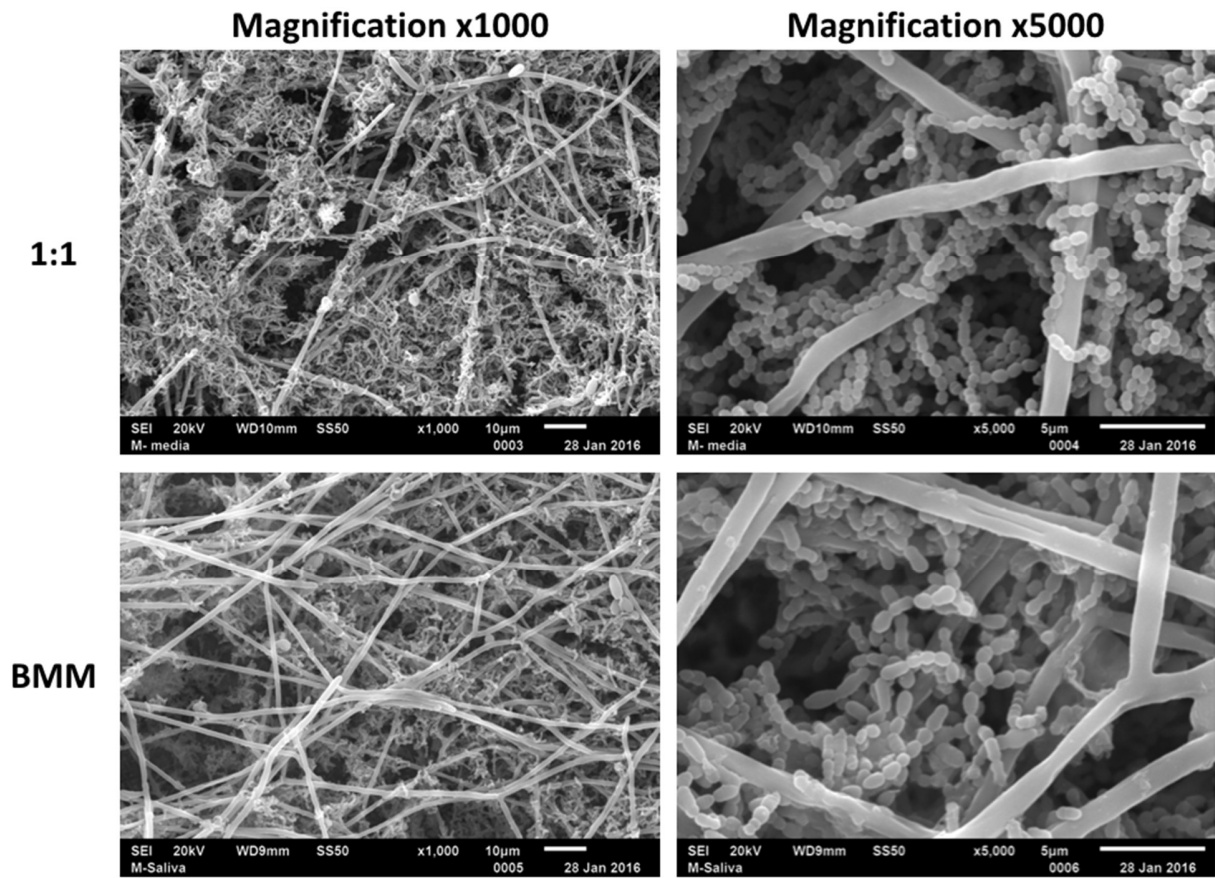


Figure S3. SEM micrographs of *C. albicans* and *S. gordonii* dual-species biofilms grown in 1:1 *v/v* RPMI/THB + 0.02% YE media (upper panel) and BMM synthetic saliva (lower panel) formed on titanium discs. Magnification $\times 1000$ and $\times 5000$.