

Supplementary Material

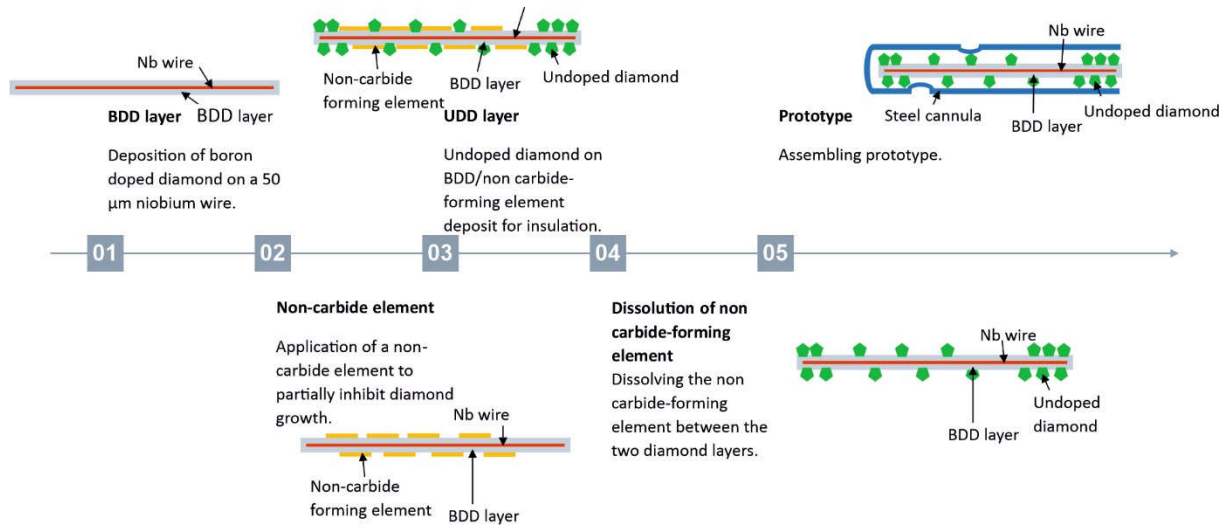
Diamond as Insulation for Conductive Diamond – A Spotted

Pattern Design for Miniaturized Disinfection Devices

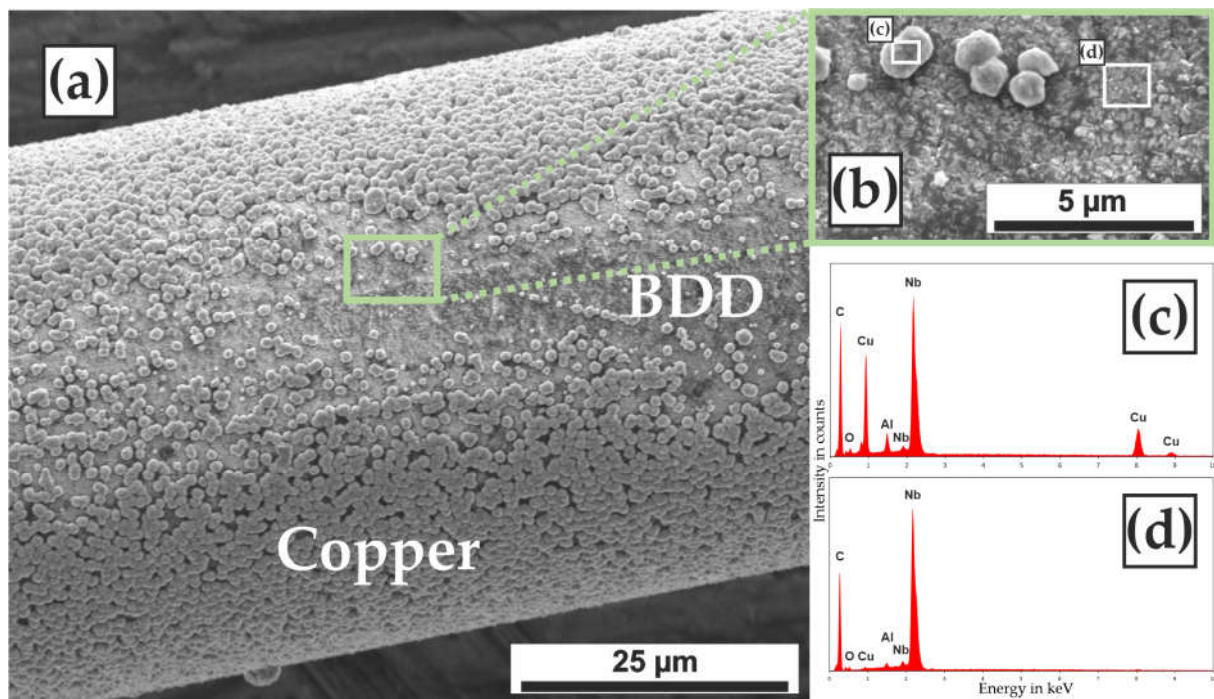
Index

| | |
|--|---|
| 1. Manufacturing Route of the DDL wire | 2 |
| 2. Raw SEM Image of Figure 4..... | 2 |
| 3. Raw SEM Image of Figure 5..... | 3 |
| 4. Raw SEM Image of Figure 6..... | 3 |
| 5. EDX Measurements of layers shown in Figure 6 (d)..... | 4 |
| 6. Raman Spectra of the UDD and BDD layers | 5 |

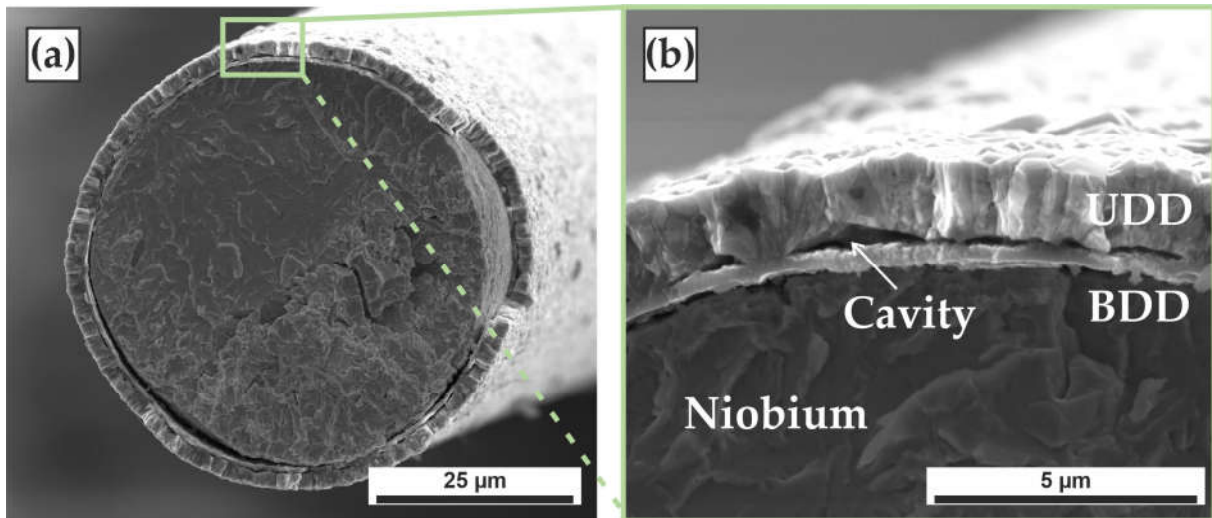
1. Manufacturing Route of the DDL wire



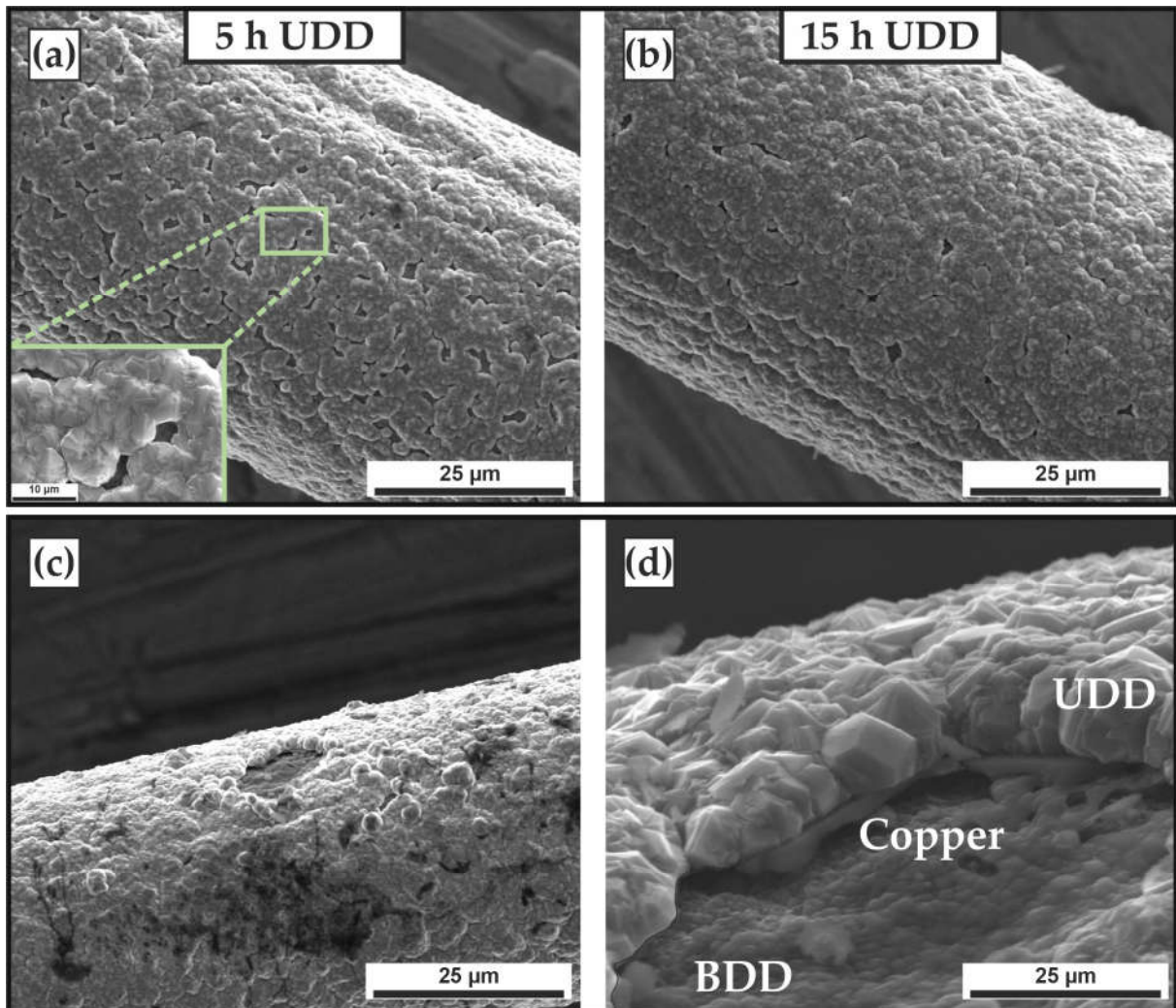
2. Raw SEM Image of Figure 4



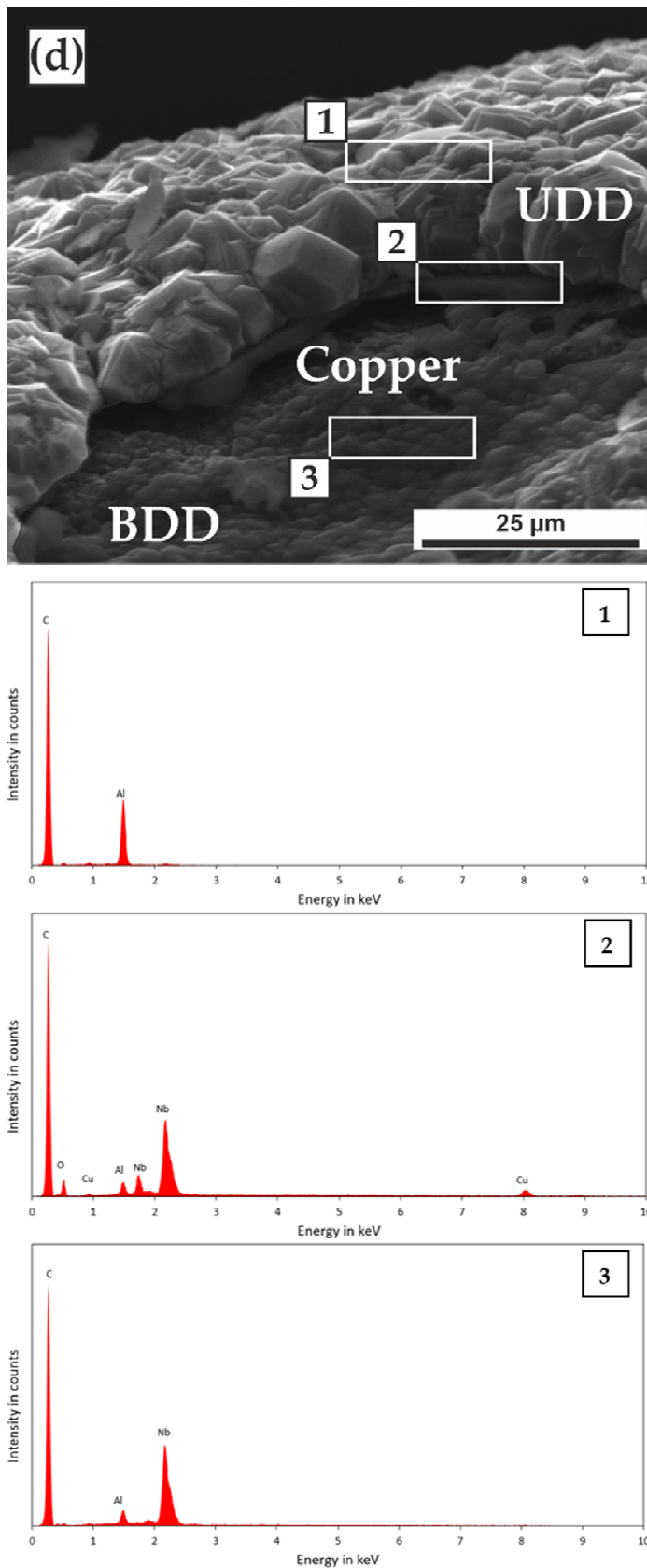
3. Raw SEM Image of Figure 5



4. Raw SEM Image of Figure 6



5. EDX Measurements of layers shown in Figure 6 (d)



The aluminium signal is attributed to the quite rudimentary sample holder setup. The DDL wires were placed on an aluminium plate and fixed with SEM compatible adhesive tape (Al-based).

6. Raman Spectra of UDD and BDD layers

