

Supplementary Materials

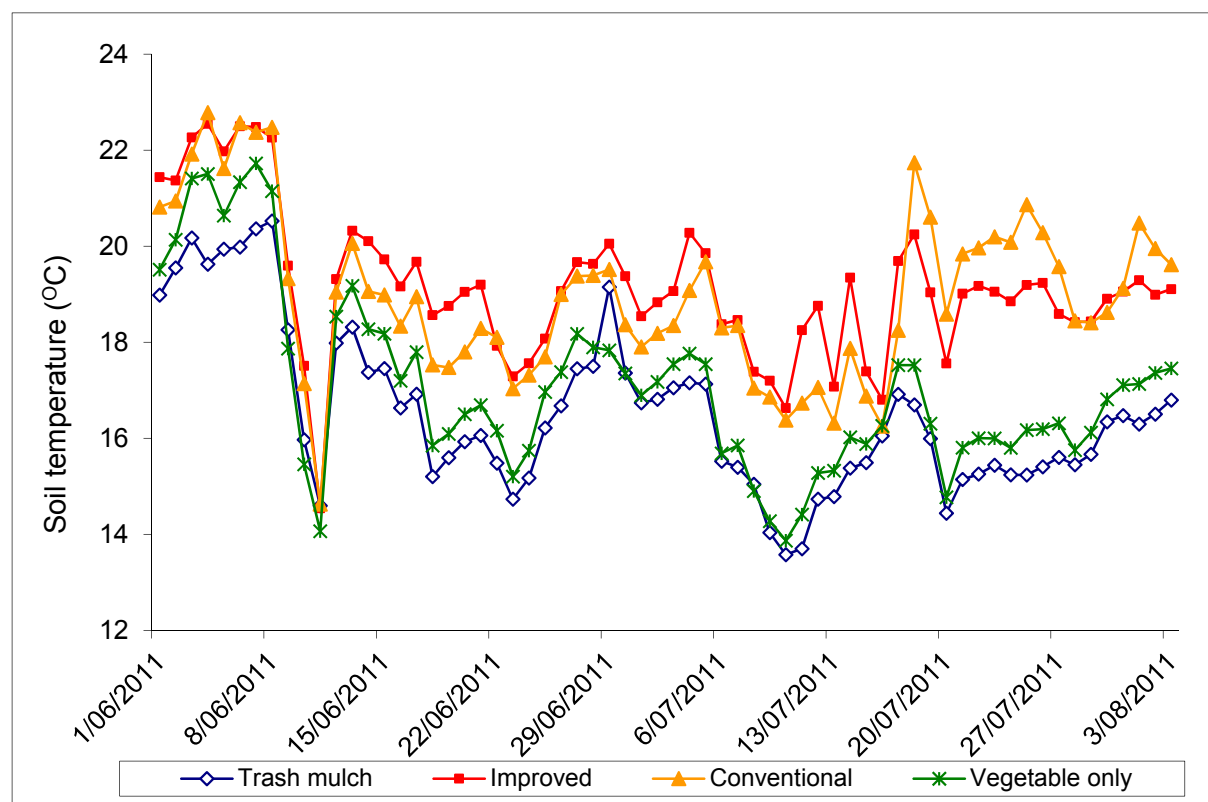


Figure S1. Soil temperature recorded at 5 cm depth during the winter zucchini crop, showing the difference between plastic mulch and trash systems.

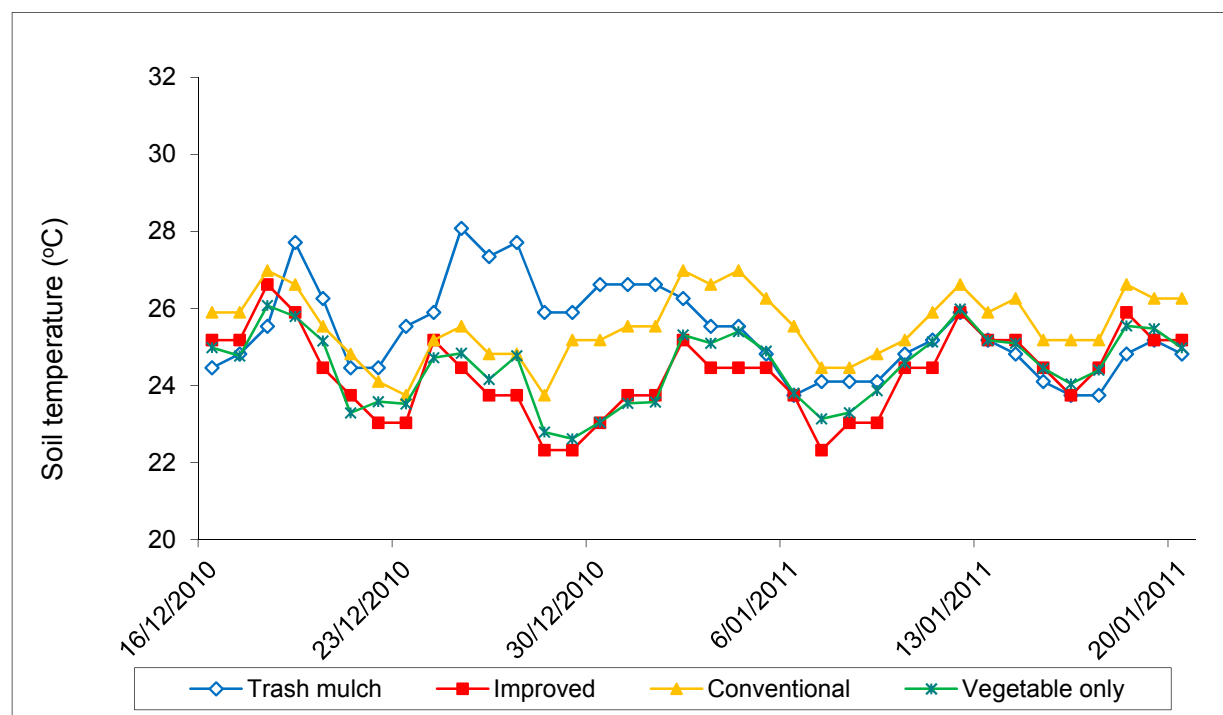


Figure S2. Soil temperature recorded at 5 cm depth from December 2010 until late Jan 2011 during the spring/summer capsicum crop, showing the difference between plastic mulch and trash systems.