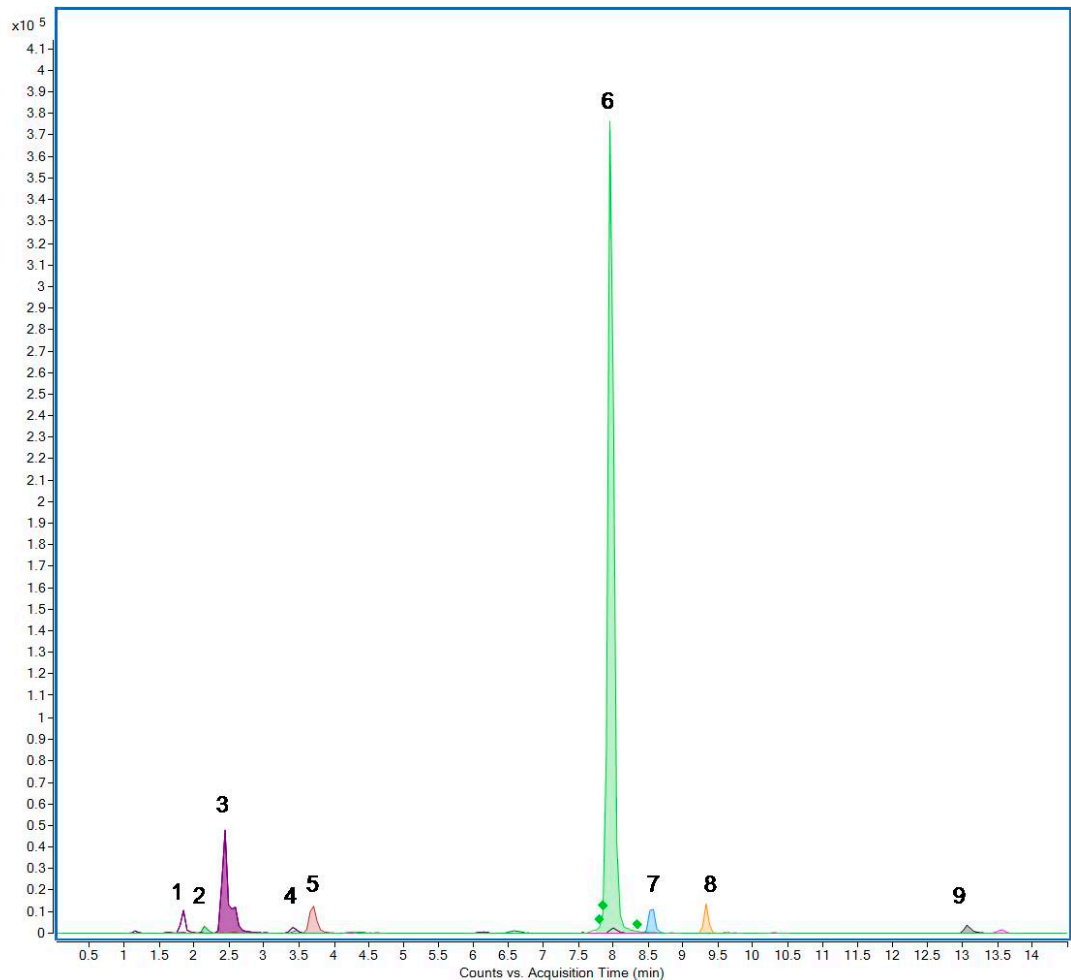
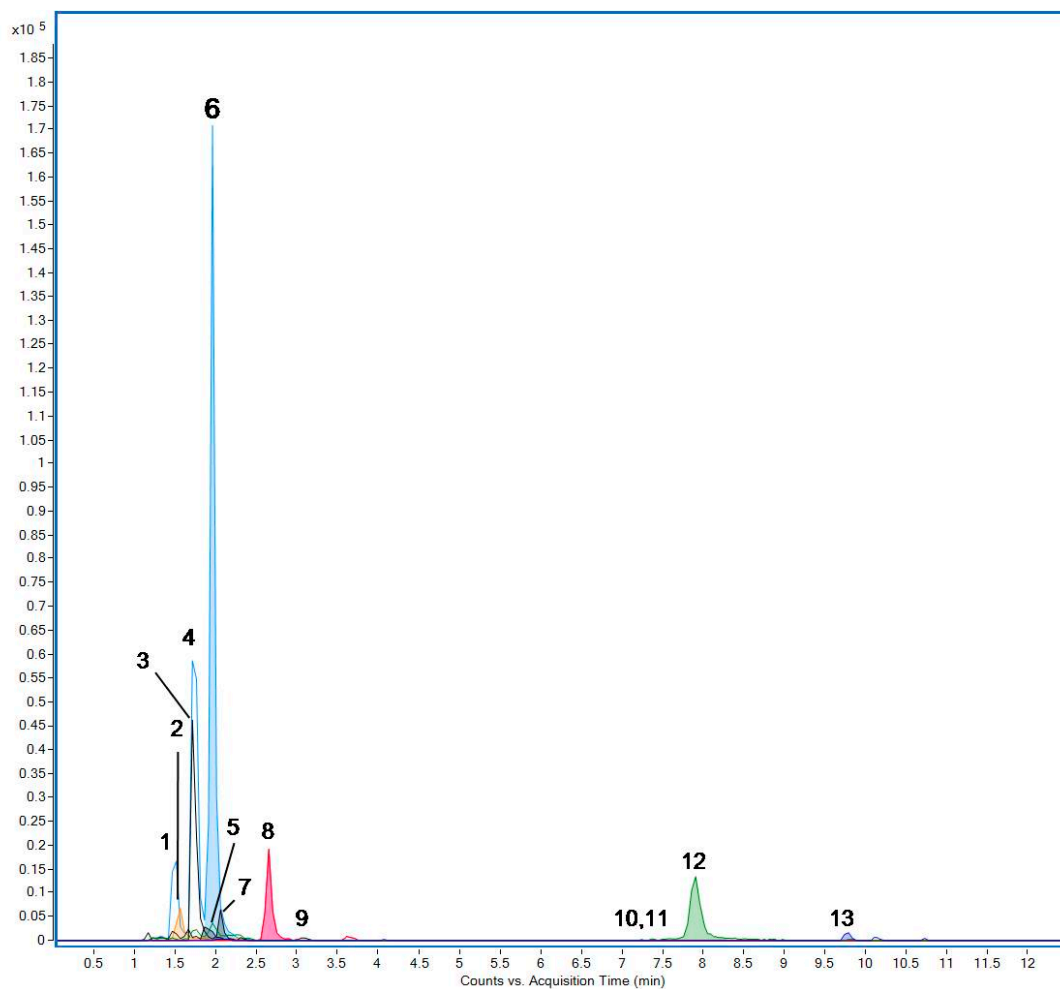


Article: Comparison between fermentation and ultrasound-assisted extraction: which is the most efficient method to obtain antioxidant polyphenols from *Sambucus nigra* and *Punica granatum* fruits?

Supplementary material



Supplementary Figure S1. HPLC-ESI-Q-ToF analysis of fermented extracts of fruits of elderberry (*S. nigra*). Extracted Ion Chromatograms relative to the species listed in Table 1 (negative ionization mode).



Supplementary Figure S2. HPLC-ESI-Q-ToF analysis of fermented extracts of fruit-peels of pomegranate (*P. granatum*). Extracted Ion Chromatograms relative to the species listed in Table 3 (negative ionization mode).