

Supplementary Information

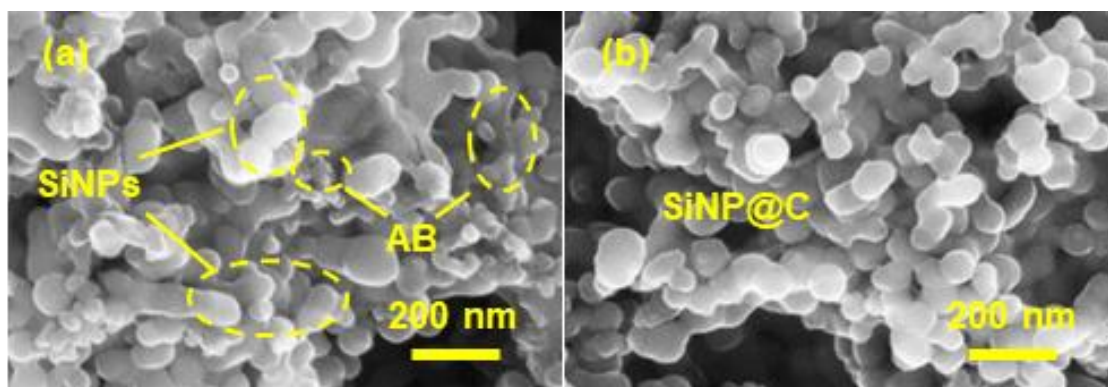


Figure S1. The zoomed images of a pristine (a) Si-XG-AB electrode and (b) a Si@C-network electrode.

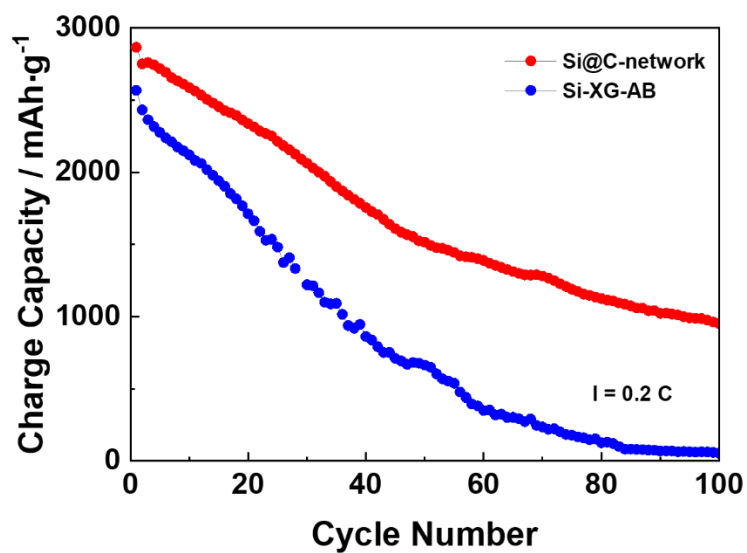


Figure S2. The galvanostatic test results of the Si-XG-AB and the Si@C-network electrode at a rate of 0.2 C (1C = 3580 mA·g⁻¹) in a 1M LiPF₆/DMC electrolyte with the initial cycle at 200 mA·g⁻¹ to activate the electrodes.