

Figure S1. FT-IR spectra of waste cooking oil sample (WCO) and samples treated with Na-clays (TCO) after 4 and 24 h.

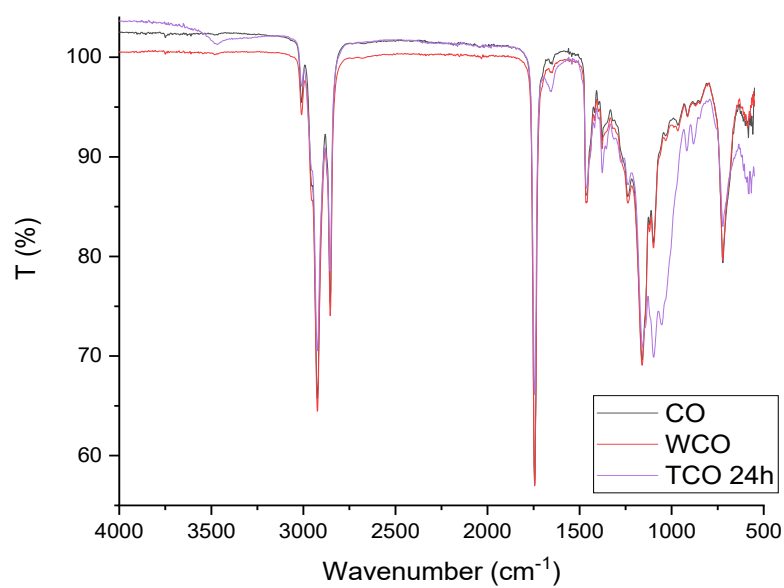


Figure S2. FT-IR spectra of edible cooking oil (CO), waste cooking oil (WCO) and 24 h treated cooking oil with Na-clay (TCO).

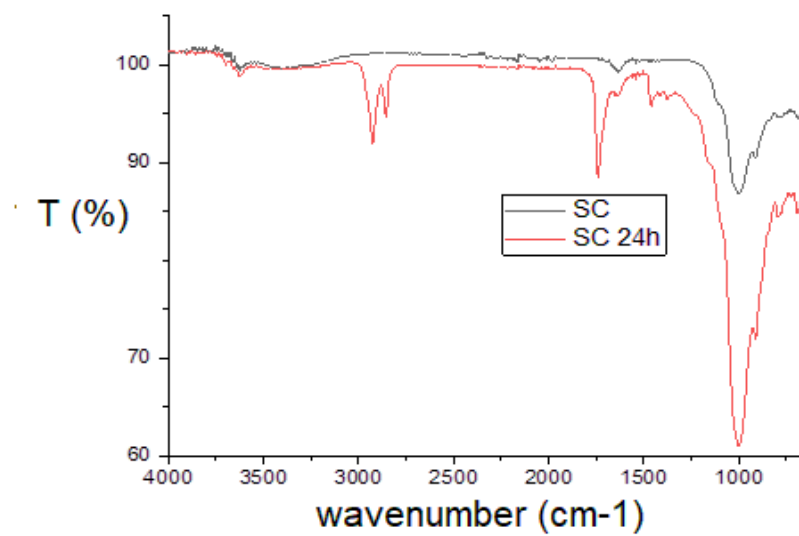


Figure S3. FT-IR spectra of Na-caly prior (SC) and after 24 h of waste cooking oil treatment (SC 24 h).

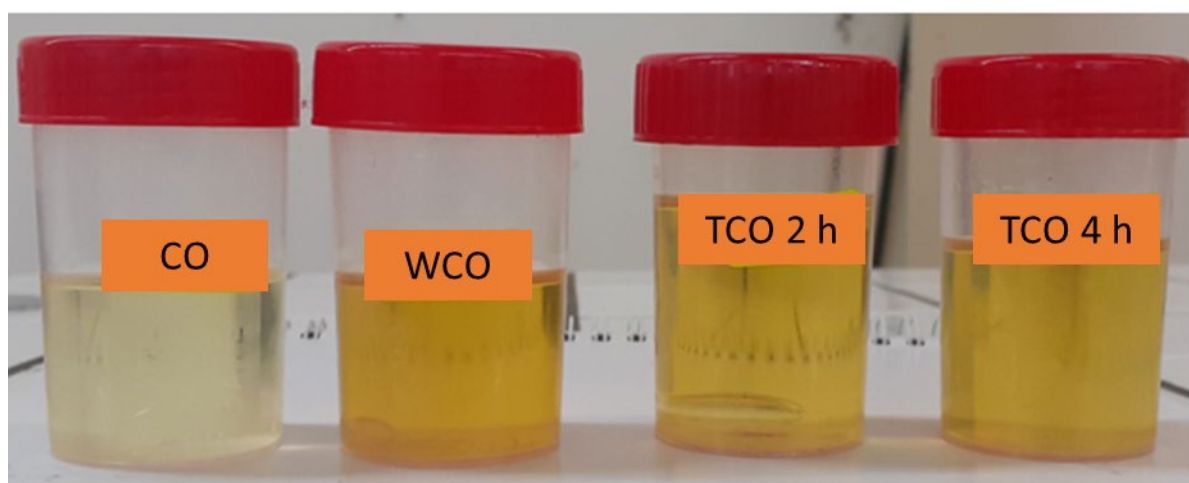


Figure S4. Cooking oil (CO), Waste Cooking Oil (WCO), 2 h treated sample (TCO 2h), and 4 h treated samples (TCO 4 h) with Na-clay.