

Supplementary Materials—Refining Tumor Treatment in Sinonasal Cancer Using Delta Radiomics of Multi-Parametric MRI after the First Cycle of Induction Chemotherapy

Valentina D. A. Corino *, Marco Bologna, Giuseppina Calareso, Carlo Resteghini, Silvana Sdao, Ester Orlandi, Lisa Licitra, Luca Mainardi and Paolo Bossi

Table S1. Scanners and acquisition parameters used to acquire the magnetic resonance images.

Scanner	<ul style="list-style-type: none"> - GE Discovery MR 750 3T (1 patient) - Philipps Achieva 1.5T (3 patients) - Siemens Magnetom Aera 1.5T (2 patient) - Siemens Magnetom Avanto 1.5T (33 patients) - Siemens Magnetom Avanto Fit 1.5T (10 patients) - Toshiba MRT200PP3 (1 patient)
Pulse sequence	<ul style="list-style-type: none"> - Turbo spin-echo (T1-weighted and T2-weighted) - Echo planar imaging (DWI)
TR	<ul style="list-style-type: none"> - T1-weighted (525.99 ± 66.29 ms, range 405–720 ms) - T2-weighted (4.81 ± 1.42 s, range 2.65–8.81 s) - DWI (5.19 ± 1.26 s, range 2.55–7.4 s)
TE	<ul style="list-style-type: none"> - T1-weighted (11.58 ± 1.27 ms, range 5.93–15 ms) - T2-weighted (108.08 ± 7.66 ms, range 75–123 ms) - DWI (76.11 ± 15.51 ms, range 52.5–93 ms)
Diffusion b-values sequences	<ul style="list-style-type: none"> - 0/1000 s/mm² (3 patients) - 0/50/100/500/750/1000 s/mm² (25 patients) - 0/10/20/50/70/150/200/500/1000 s/mm² (6 patients)
Slice thickness	<ul style="list-style-type: none"> - T1-weighted (3.15 ± 0.48 mm, range 3–5 mm) - T2-weighted (3.12 ± 0.40 mm, range 3–5 mm) - DWI (3.13 ± 0.45 mm, range 3–5 mm)
Pixel spacing	<ul style="list-style-type: none"> - T1-weighted (0.60 ± 0.10 mm, range 0.25–0.9 mm) - T2-weighted (0.50 ± 0.10 mm, range 0.29–0.69 mm) - DWI (1.58 ± 0.41 mm, range 0.94–2.18 mm)

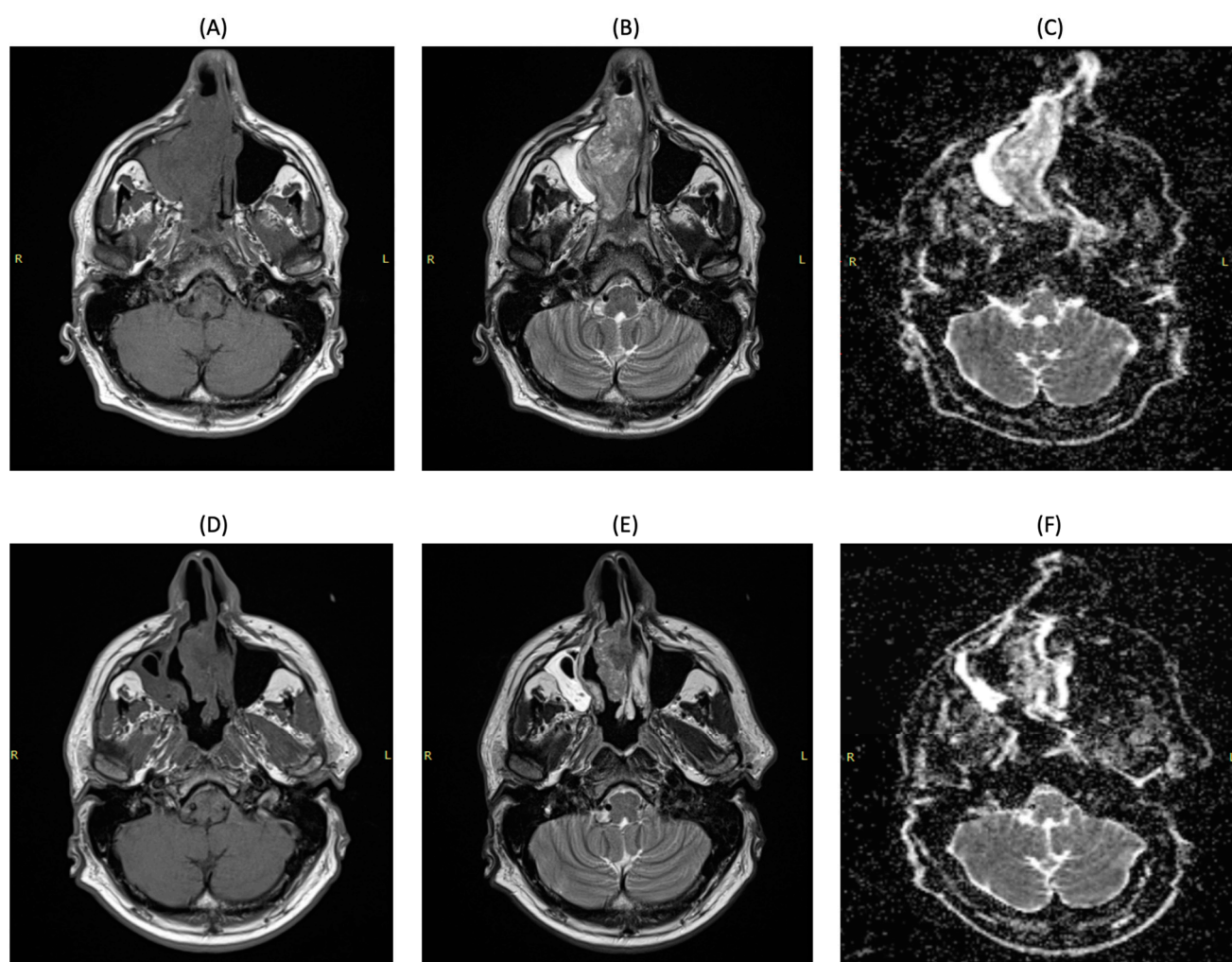


Figure S1. T1- and T2-weighted images and ADC map for one patient at baseline (A) – (B) – (C) and after three weeks after starting IC therapy (D) – (E) – (F).