

Supporting Information

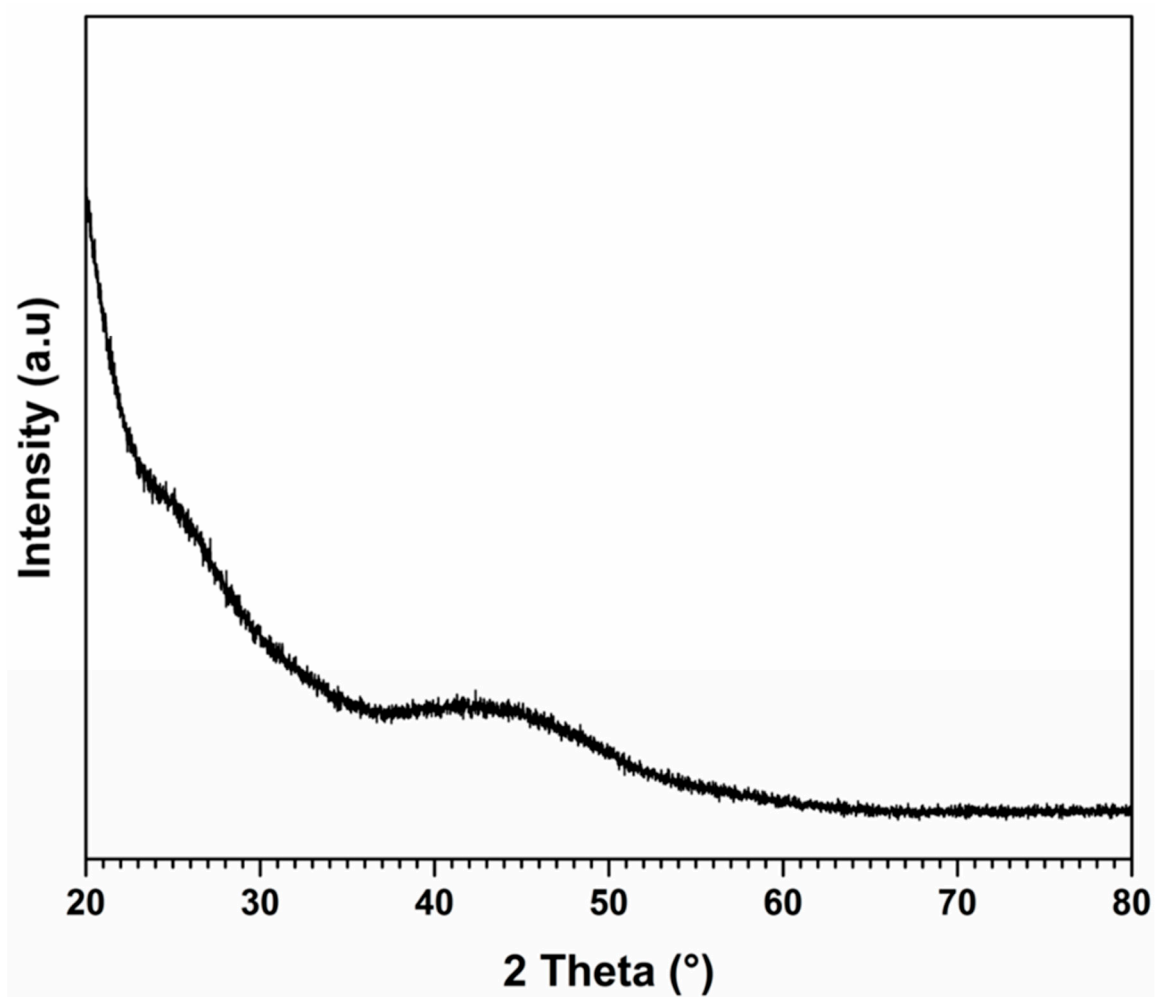


Figure S1: XRD pattern of the polymethylmethacrylate sample holder.

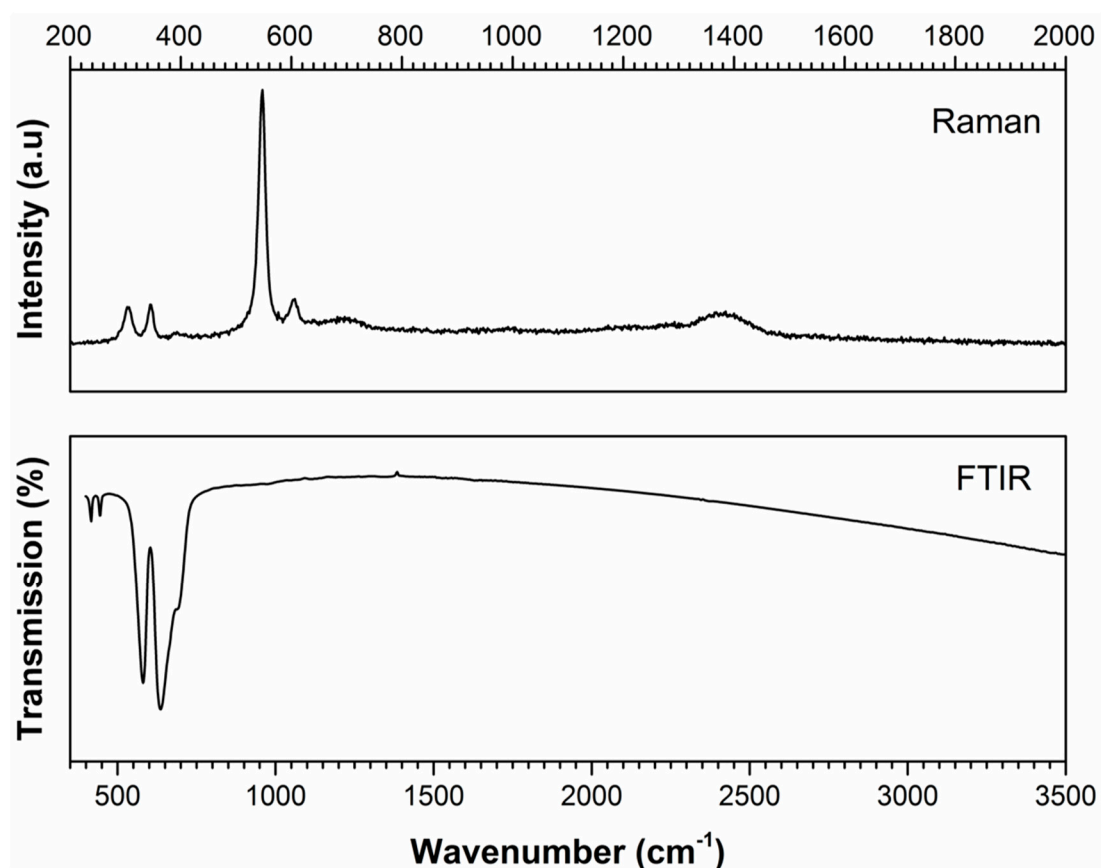


Figure S2: Raman and FTIR spectra of a commercial Cr_2O_3 nanopowder (99.9%).

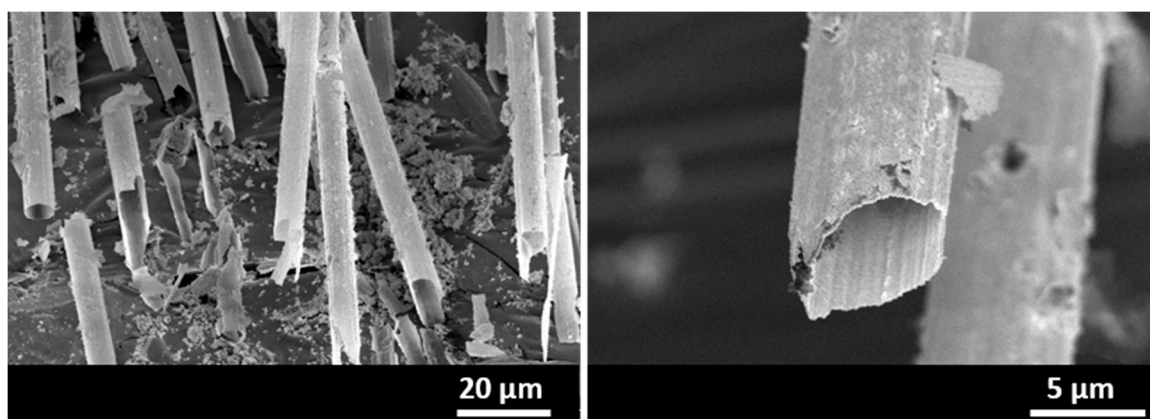


Figure S3: SEM pictures of Cr_2O_3 hollow fibers synthesized by means of a replication method. Micron-sized carbon fibers were selected as a templating agent.