

SUPPLEMENTARY MATERIAL

Detection and identification of possible gel residues on the surface of paintings after cleaning treatments

Chiara Riedo¹, Giulia Rollo², Oscar Chiantore¹, Dominique Scalarone^{1*}

¹ Department of Chemistry and NIS Centre, University of Turin, Via Pietro Giuria 7, Turin, 10125 Turin (Italy)

² Koinè Conservazione Beni Culturali, Piazza della Consolazione 29, 00186 Rome (Italy)

* Correspondence: dominique.scalarone@unito.it

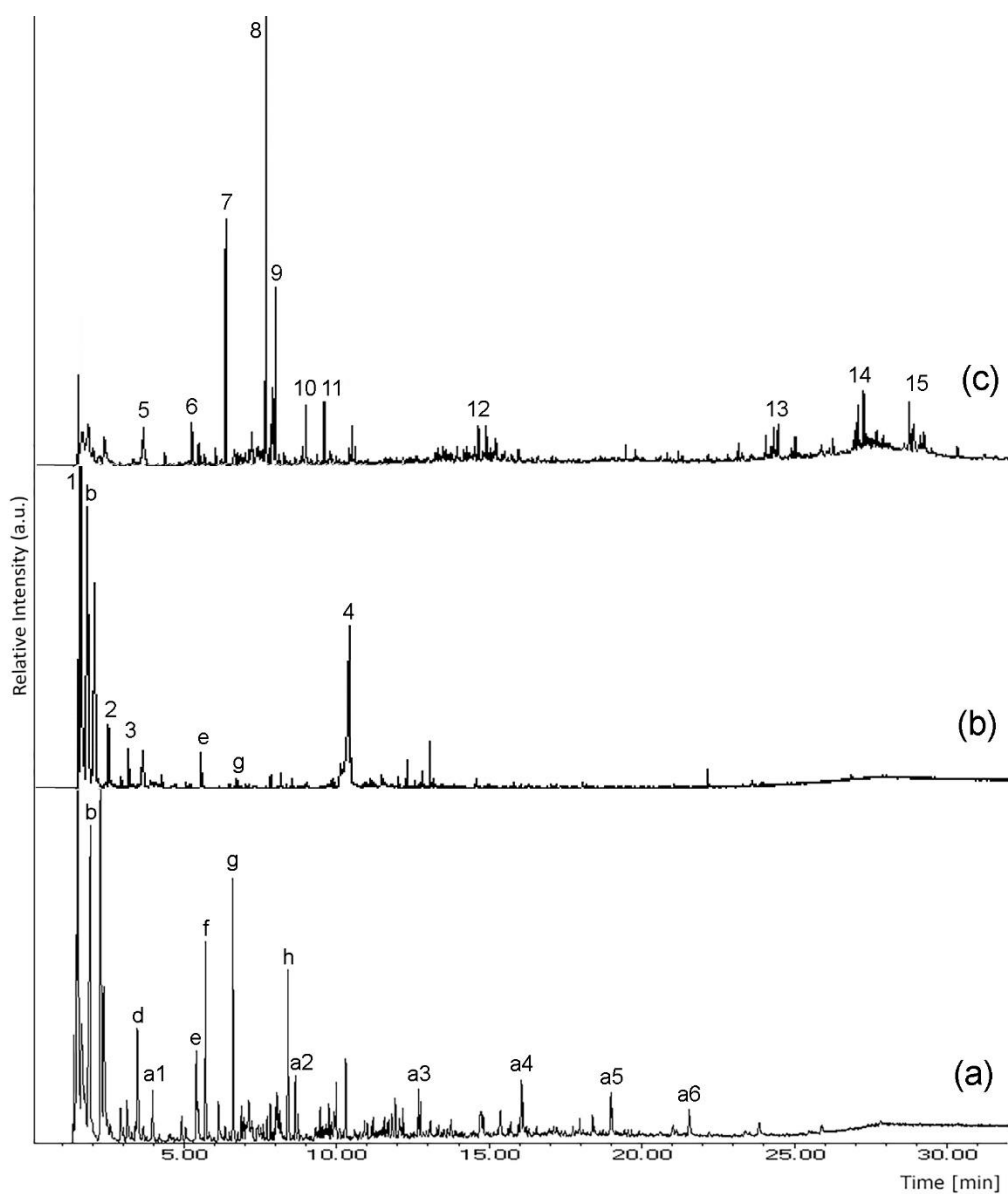


Figure 1S. TIC pyrograms of a) reference gel, b) vinyl paint and c) dammar varnish.

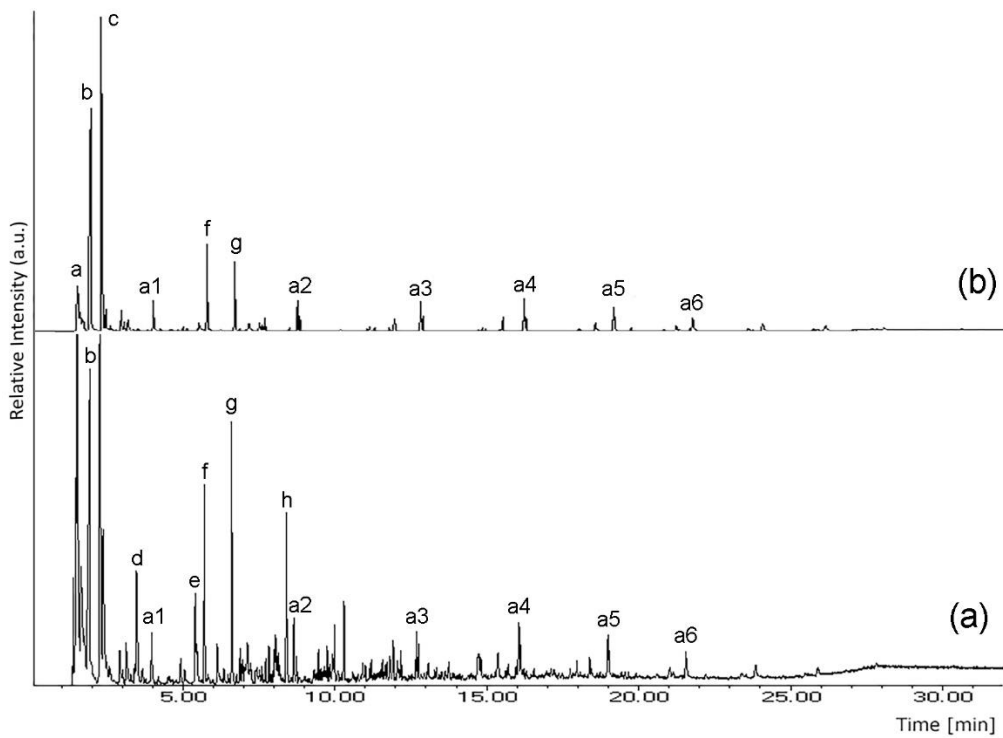


Figure 2S. Comparison between TIC (a) and SIM (b) pyrograms of the reference gel.



Figure 3S. Detail of the "Madonna and Child with Angels and the Saints Francesco di Sales and Carlo Borromeo" showing the area where cleaning tests were performed.