

# Elemental and spectral mapping for the stratigraphic and com-positional characterization of a 16th century painting

Alice Dal Fovo<sup>1\*</sup>, Margherita Morello<sup>2</sup>, Anna Mazzinghi<sup>3,4</sup>, Caterina Toso<sup>5</sup>, Monica Galeotti<sup>5</sup> and Raffaella Fontana<sup>1</sup>

<sup>1</sup> National Research Council – National Institute of Optics (CNR-INO), Largo E. Fermi 6, 50125, Florence, Italy

<sup>2</sup> OPD-Scuola di Alta Formazione e Studio, Via Alfani 78, 50121 Florence, Italy

<sup>3</sup> University of Florence, Department of Physics and Astronomy, 50019, Sesto Fiorentino, Italy

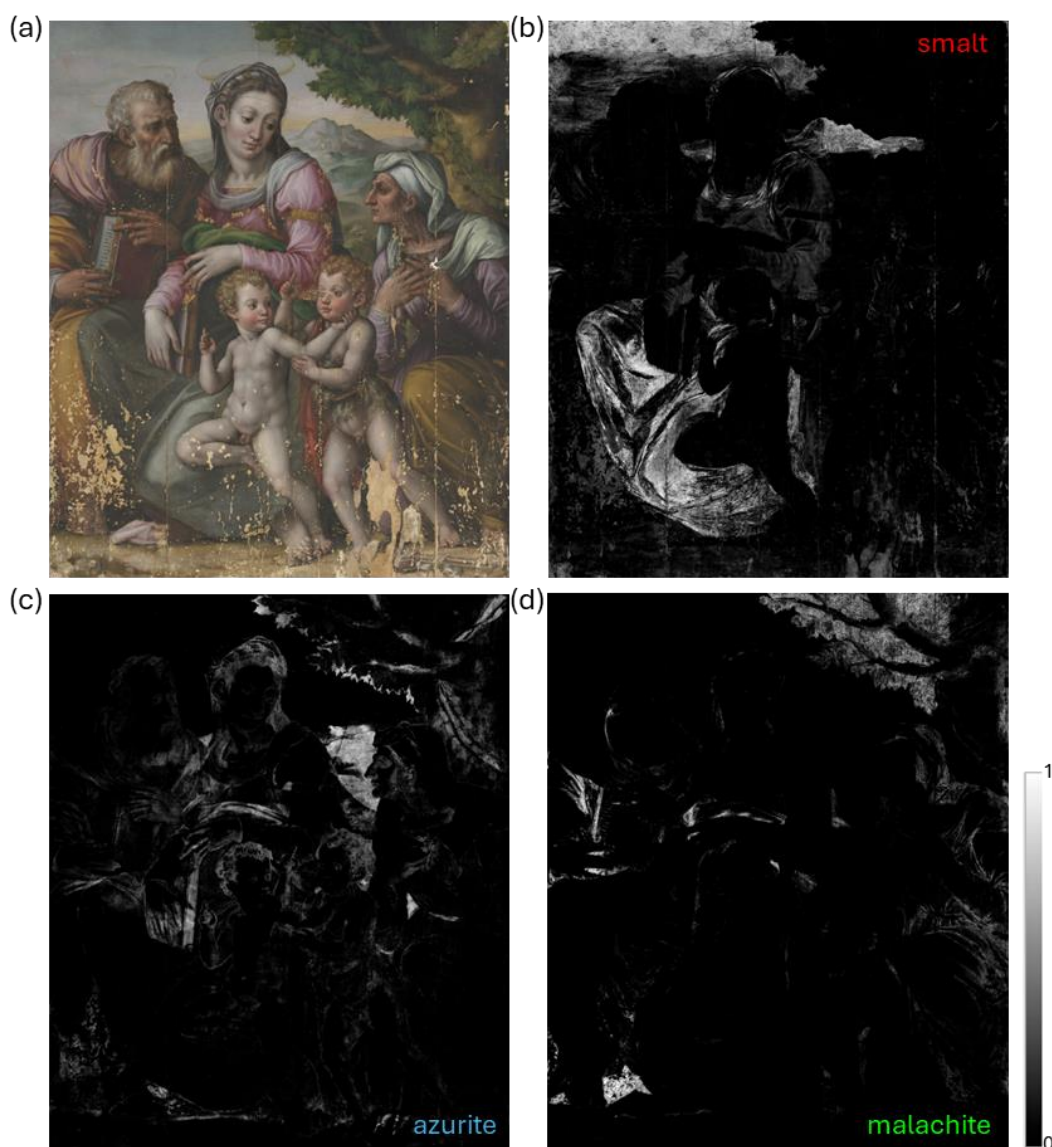
<sup>4</sup> National Institute of Nuclear Physics (INFN), Florence division, Via Bruno Rossi, 1, 50019, Sesto Fiorentino, Italy

<sup>5</sup> Opificio delle Pietre Dure, V.le Filippo Strozzi, 1, 50129, Florence, Italy

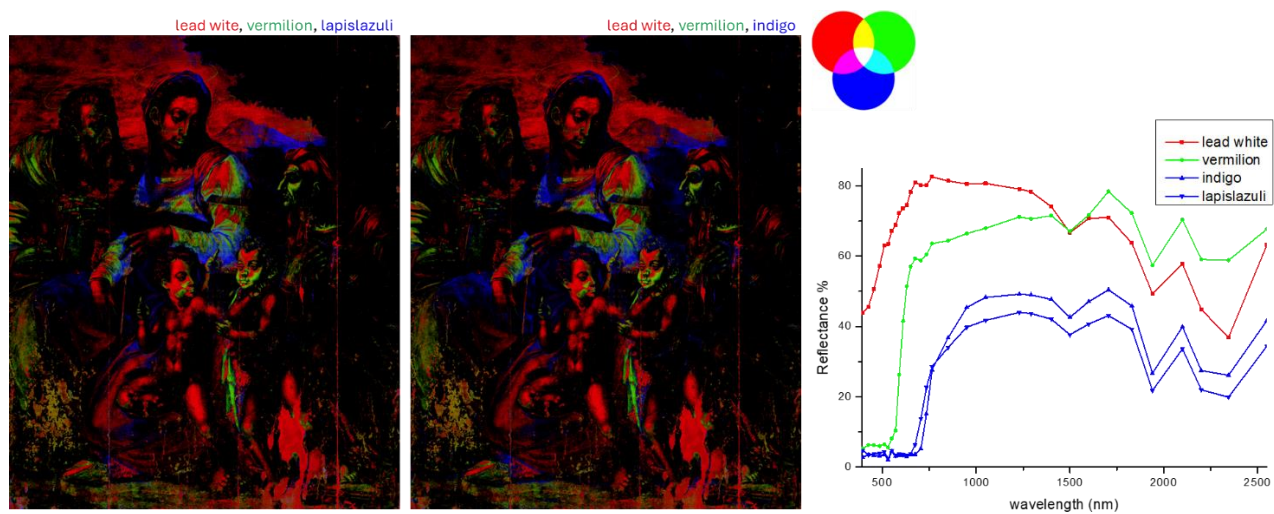
\* Correspondence: alice.dalfovo@ino.cnr.it

## Supplementary material

### Spectral correlation mapping (SCM)



**Figure S1.** SC maps showing the distribution of smalt (b), azurite (c), and malachite (d).



**Figure S2.** Combined SCM of lead white – vermilion – lapis lazuli (left) and lead white – vermilion – indigo (middle), with their respective spectra (right) used for the analysis.



heritage

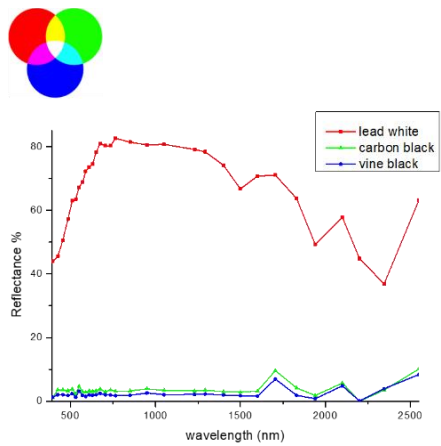
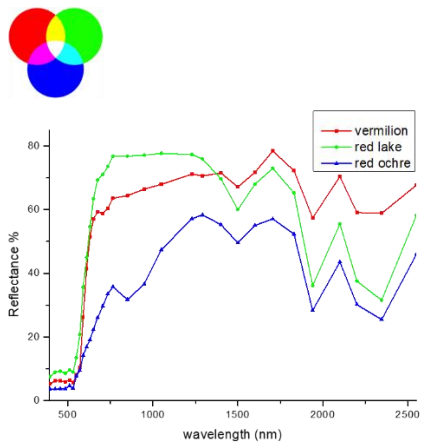
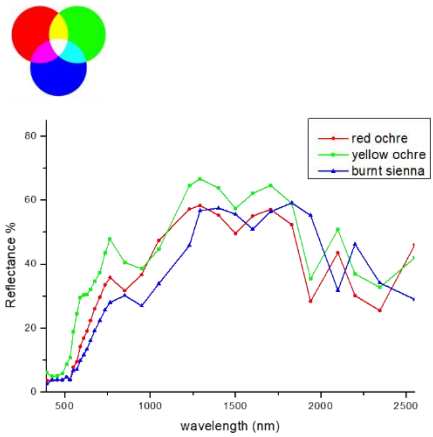
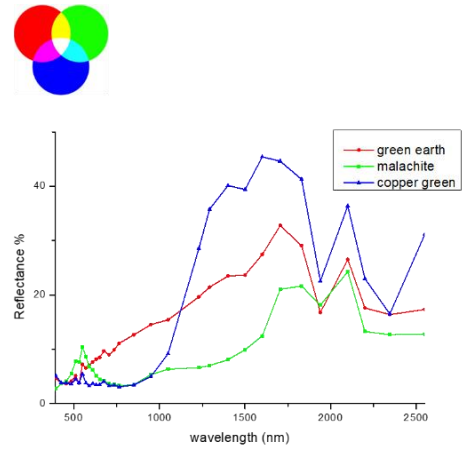
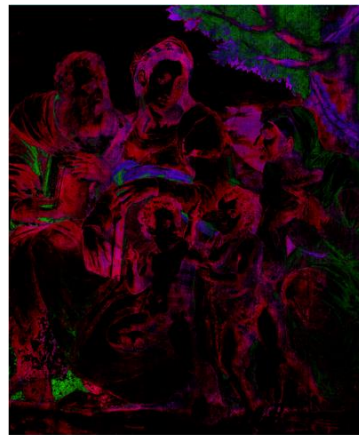


Figure S3. Combined SC maps showing the distribution of all the identified pigments all over the painting.