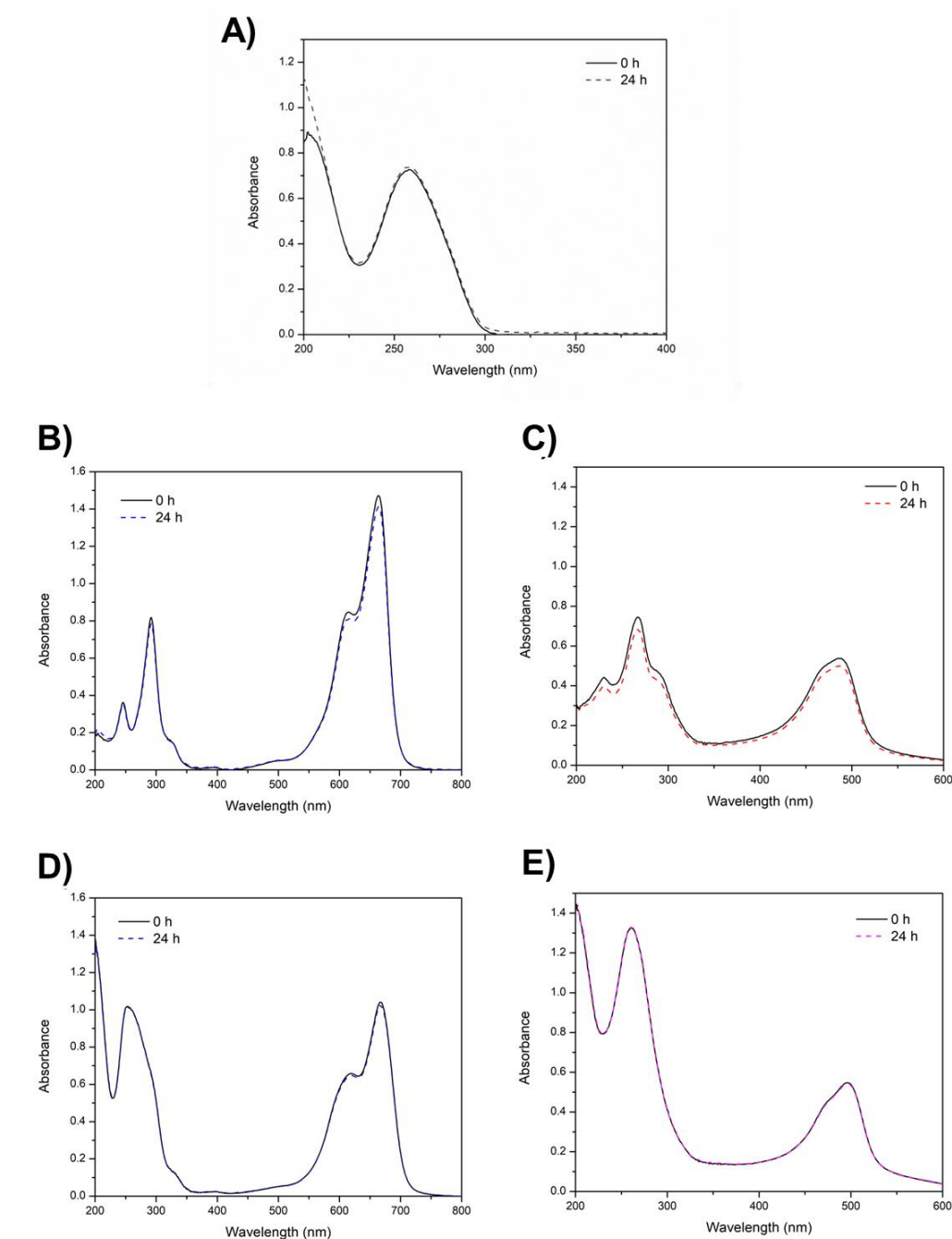


Low-energy radiation effect on the DNA in presence of Methylene Blue and Acridine Orange

Thais P. Pivetta ^{1,2}, Paulo A. Ribeiro ² and Maria Raposo ^{2,*}

¹ CEFITEC, Department of Physics, NOVA School of Science and Technology, Universidade NOVA de Lisboa, 2829-516 Caparica, Portugal; t.pivetta@campus.fct.unl.pt.

² Laboratory of Instrumentation, Biomedical Engineering and Radiation Physics (LIBPhys-UNL), Department of Physics, NOVA School of Science and Technology, Universidade NOVA de Lisboa, 2829-516 Caparica, Portugal; t.pivetta@campus.fct.unl.pt; pfr@fct.unl.pt; mfr@fct.unl.pt.



Supplementary Figure S1: Spectra of samples kept in the dark with measurements immediately after the preparation (0 hour) and 24 hours later: (A) DNA; (B) methylene blue; (C) acridine orange; (D) methylene blue with DNA; (E) acridine orange with DNA.