

Supplementary Materials

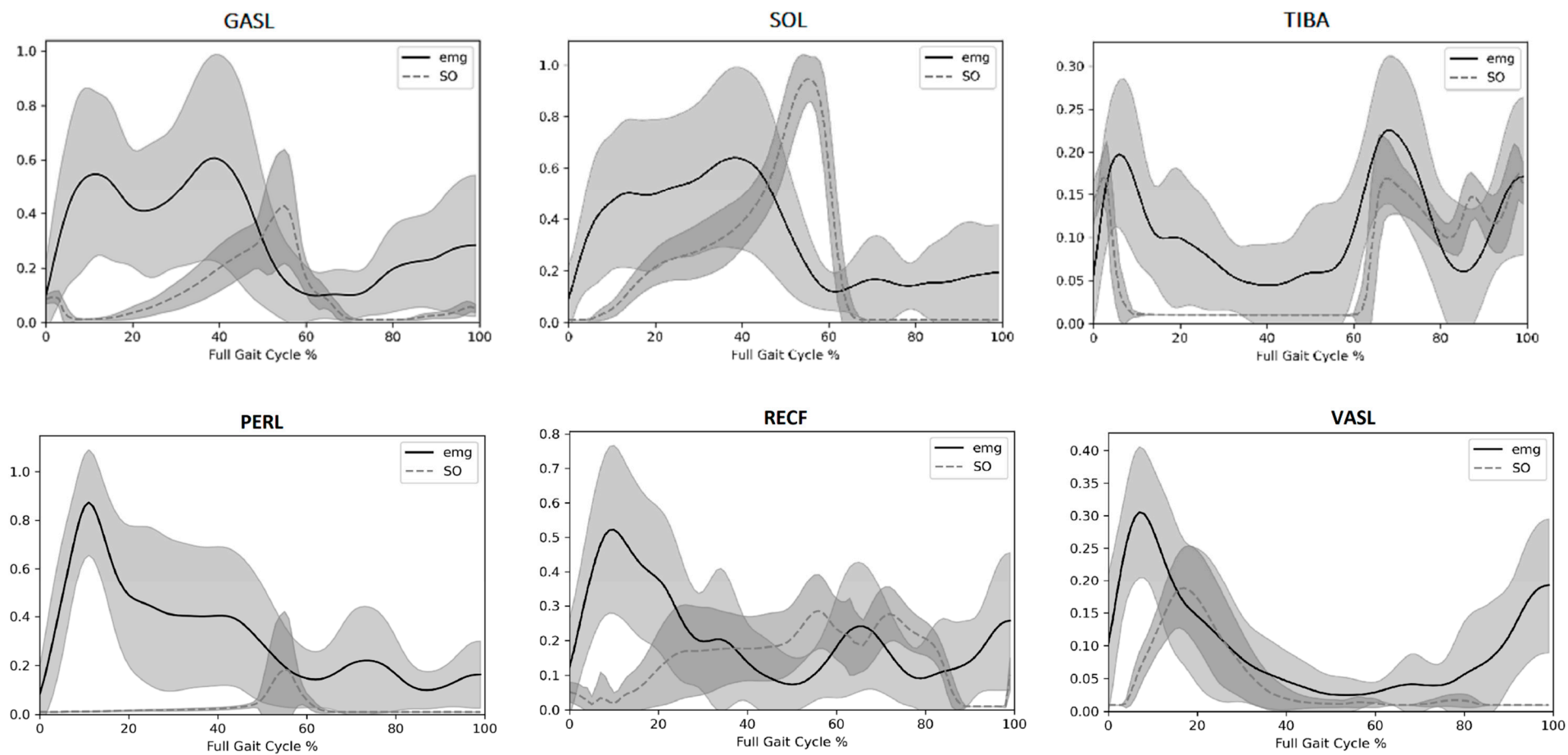
Clinical Validation of Estimated Muscle Activations during Phases of Elderly Gait

**Athanasios Gkrekidis ¹, Georgios Giarmatzis ¹, Dimitrios Menychtas ¹, Evangelos Karakasis ¹,
Vassilios Gourgoulis ¹, Maria Michalopoulou ¹, Ilias Smilios ¹, Helen T. Douda ¹, Georgios Ch. Sirakoulis ²
and Nikolaos Aggelousis ^{1,*}**

¹ School of Physical Education and Sport Science, Democritus University of Thrace, 69100 Komotini, Greece; agkrekid@phyed.duth.gr (A.G.); ggiarmat@phyed.duth.gr (G.G.); dmenycht@affil.duth.gr (D.M.); ekarakas@pme.duth.gr (E.K.); vgoyrgoy@phyed.duth.gr (V.G.); michal@phyed.duth.gr (M.M.); ismilios@phyed.duth.gr (I.S.); edouda@phyed.duth.gr (H.T.D.)

² Department of Electrical and Computer Engineering, Democritus University of Thrace, 67100 Xanthi, Greece; gsirak@ee.duth.gr

* Correspondence: nagelous@phyed.duth.gr



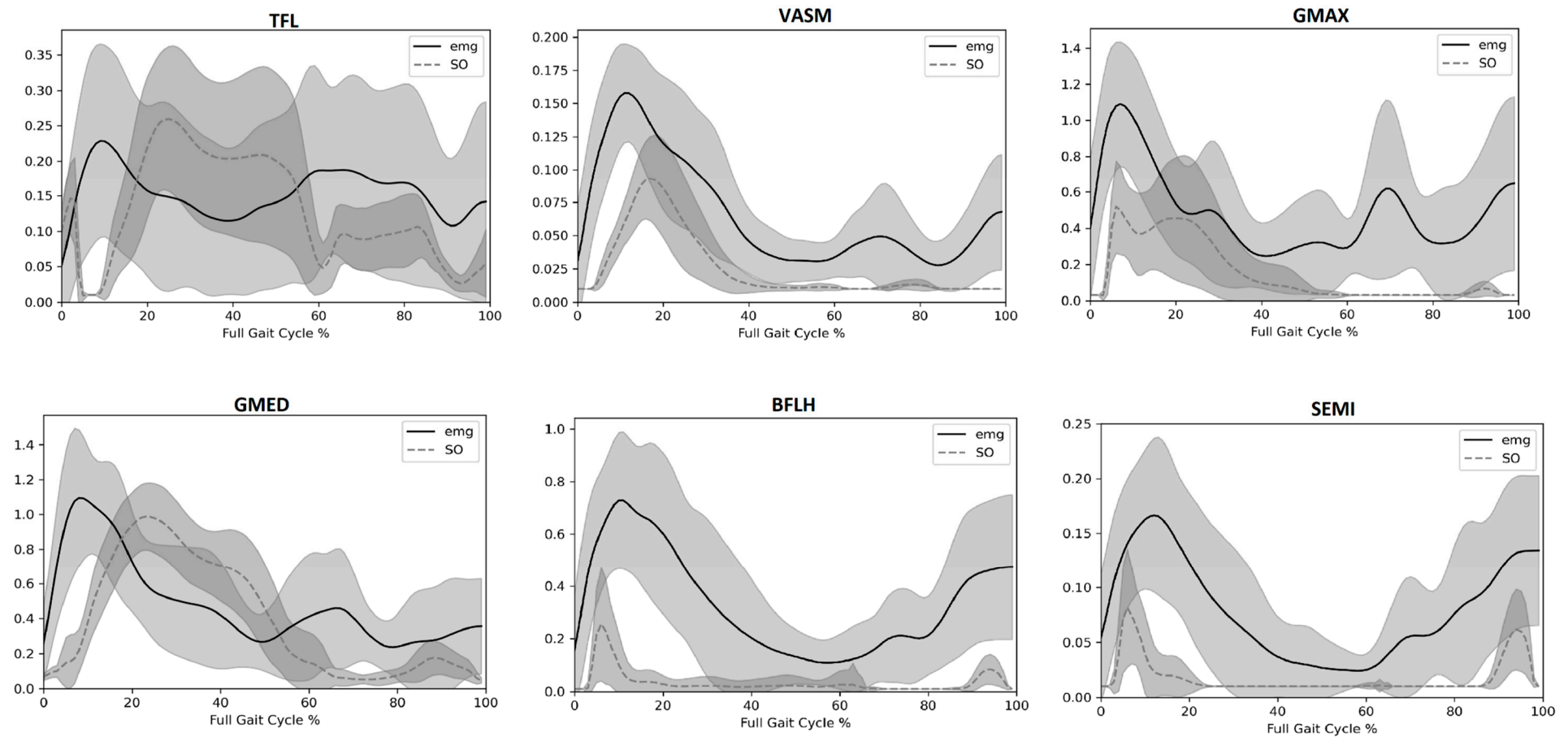


Figure S1. Experimental and modeled muscle activations with their corresponding standard deviations. The black solid line represents the mean recorded EMG of each subject's muscle and the shaded area around the solid black line represents the standard deviation of the EMG values during the 10 gait cycles. The dotted line represents the mean estimated activation values of every subject's muscle and the shaded area around dotted line represents the standard deviation of the estimated activation values for the 10 gait cycles.