

## Glucose Metabolism in Cardiovascular Diseases

Guest Editors:

**Dr. Hidenori Komiyama**

Department of Cardiology,  
Saitama Medical Center, Saitama  
Medical University, Saitama 350-  
8550, Japan

**Prof. Dr. Kuniya Asai**

Department of Cardiovascular  
Medicine, Nippon Medical School  
Hospital, Nippon Medical School,  
Tokyo 113-8603, Japan

Deadline for manuscript  
submissions:

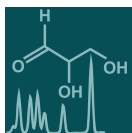
**31 October 2024**

### Message from the Guest Editors

Dear Colleagues,

The Special Issue will explore various topics relating to glucose metabolism and its implications for cardiovascular health. These topics include the longstanding issues historically associated with cardiovascular disease risk factors, the relationship between statin medications affecting mitochondrial function and potentially leading to glucose metabolism, and the potential of glucose intolerance to contribute to heart failure. Additionally, the issue will delve into the effects of MRA, beta-blockers, SGLT-2 inhibitors, and ARNI medications on glucose metabolism and cardiovascular outcomes. Lastly, this Special Issue will discuss the integration of IoT technologies for improving the management of cardiovascular health and glucose metabolism, offering insights into innovative approaches for real-time monitoring and personalized interventions. By addressing these topics comprehensively, the Special Issue can provide valuable insights into the complex interplay between glucose metabolism, cardiovascular disease, and therapeutic interventions, thus offering new perspectives and strategies for optimizing patient outcomes.





an Open Access Journal by MDPI

## Editor-in-Chief

### Dr. Amedeo Lonardo

1. Formerly Director of the Simple Operating Unit "Metabolic Syndrome", Azienda Ospedaliero-Universitaria, 41126 Modena, Italy  
2. Formerly Professor of Internal Medicine, School of Specialization of Allergology and Clinical Immunology, University of Modena and Reggio Emilia, 41121 Modena, Italy

## Message from the Editor-in-Chief

The metabolome is the result of the combined effects of genetic and environmental influences on metabolic processes. Metabolomic studies can provide a global view of metabolism and thereby improve our understanding of the underlying biology. Advances in metabolomic technologies have shown utility for elucidating mechanisms which underlie fundamental biological processes including disease pathology. *Metabolites* is proud to be part of the development of metabolomics and we look forward to working with many of you to publish high quality metabolomic studies.

## Author Benefits

**Open Access:** free for readers, with article processing charges (APC) paid by authors or their institutions.

**High Visibility:** indexed within Scopus, SCIE (Web of Science), PubMed, PMC, Embase, CAPUS / SciFinder, and other databases.

**Journal Rank:** JCR - Q2 (*Biochemistry & Molecular Biology*) / CiteScore - Q2 (*Endocrinology, Diabetes and Metabolism*)

## Contact Us

*Metabolites* Editorial Office  
MDPI, St. Alban-Anlage 66  
4052 Basel, Switzerland

Tel: +41 61 683 77 34  
[www.mdpi.com](http://www.mdpi.com)

[mdpi.com/journal/metabolites](http://mdpi.com/journal/metabolites)  
[metabolites@mdpi.com](mailto:metabolites@mdpi.com)  
X@MetabolitesMDPI