



Computational Intelligence for Smart Sensor Networks: Possibilities and Prospects for Soft Computing-Based Sensors

Guest Editor:

Prof. Dr. Jason Levy

Disaster Preparedness and
Emergency Management,
University of Hawaii, 2540 Dole
Street, Honolulu, HI 96822, USA

Deadline for manuscript
submissions:

closed (31 March 2020)

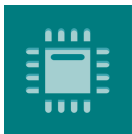
Message from the Guest Editor

Dear Colleagues,

The use of smart sensors is one of the most timely and important topics in computational intelligence and sensor networks. We are particularly interested in papers that examine novel solutions for computational efficiency (power control) and swarm intelligence in sensor networks.

- Cooperative processing (swarm intelligence, fog computing, etc.) in sensor networks
- Green Cyber Physical Systems (CPS) and Internet of Things
- Data analytics, cloud computing and wireless sensor networks
- Wearable sensors and Privacy
- Soft sensor systems
- Biomedical applications;
- Big Data analytics;
- Extreme computing;
- Intelligent manufacturing;
- Autonomous systems and industrial processes optimization;
- Hyper-parameter learning (learning and tuning of sensor parameters, automatic calibration)
- Indirect measurements
- Computer vision and image processing;
- Parallel and distributed computing.
- Information fusion in sensor networks
- Wireless sensor networks
- Cloud and swarm intelligence





sensors

- data aggregation
- Sensitivity and robustness analysis
- Computational efficiency (power control)
- Human measurements and Social sensing

Indexed in:
PubMed

CITESCORE
6.8

IMPACT
FACTOR
3.9

an Open Access
Journal by MDPI

Editor-in-Chief

Prof. Dr. Vittorio M. N. Passaro

Dipartimento di Ingegneria
Elettrica e dell'Informazione
(Department of Electrical and
Information Engineering),
Politecnico di Bari, Via Edoardo
Orabona n. 4, 70125 Bari, Italy

Author Benefits

Open Access : free for readers, with [article processing charges \(APC\)](#) paid by authors or their institutions.

High Visibility: indexed within [Scopus](#), [SCIE \(Web of Science\)](#), [PubMed](#), [MEDLINE](#), [PMC](#), [Ei Compendex](#), [Inspec](#), [Astrophysics Data System](#), and [other databases](#).

Journal Rank: JCR - Q2 (*Instruments & Instrumentation*) / CiteScore - Q1 (*Instrumentation*)

Message from the Editor-in-Chief

Sensors is a leading journal devoted to fast publication of the latest achievements of technological developments and scientific research in the huge area of physical, chemical and biochemical sensors, including remote sensing and sensor networks. Both experimental and theoretical papers are published, including all aspects of sensor design, technology, proof of concept and application. *Sensors* organizes Special Issues devoted to specific sensing areas and applications each year.

Contact Us

Sensors Editorial Office
MDPI, St. Alban-Anlage 66
4052 Basel, Switzerland

Tel: +41 61 683 77 34
www.mdpi.com

mdpi.com/journal/sensors
sensors@mdpi.com
[X@Sensors_MDPI](#)