

Sensors in Indoor Positioning Systems

Guest Editors:

Prof. Dr. Ignacio Bravo-Muñoz

Department of Electronics,
Polytechnic School Office O-217,
University of Alcalá, Campus
Universitario, 28871 Alcalá,
Madrid, Spain

Dr. Alfredo Gardel-Vicente

Department of Electronics,
Polytechnic School Office O-322,
University of Alcalá, Campus
Universitario, 28871 Alcalá,
Madrid, Spain

Prof. Dr. José Luis Lázaro-Galilea

Department of Electronics,
Polytechnic School Office O-334,
University of Alcalá, Campus
Universitario, 28871 – Alcalá,
Madrid, Spain

Deadline for manuscript
submissions:

closed (20 September 2021)

Message from the Guest Editors

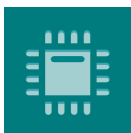
In the last decade, there has been widespread technological evolution in the field of sensors. This has allowed for the development of numerous applications and services based on new sensors or conventional sensors whose typical applicability has been modified.

Undoubtedly, the field of indoor environments is one of the major beneficiaries of this technological evolution. Thus, many contributions have been made in the field of the development of intelligent spaces that provide it with additional intelligence that makes life easier for humans. One of the most recursive applications has been the location of objects, robots, people, or even unusual situations based on the deployment of sensors for indoor environments.

This Special Issue is then an opportunity to disseminate among the scientific community relevant and new contributions related to

- Development of sensors for indoor environments;
- Indoor applications with sensors;
- Intelligent methodologies for efficient sensor deployment;
- New uses of sensors in indoor spaces;
- New algorithm applied to sensors for intelligent environments;
- Use of new and traditional technologies based on sensors for indoor spaces.





sensors



an Open Access Journal by MDPI

Editor-in-Chief

Prof. Dr. Vittorio M. N. Passaro

Dipartimento di Ingegneria
Elettrica e dell'Informazione
(Department of Electrical and
Information Engineering),
Politecnico di Bari, Via Edoardo
Orabona n. 4, 70125 Bari, Italy

Message from the Editor-in-Chief

Sensors is a leading journal devoted to fast publication of the latest achievements of technological developments and scientific research in the huge area of physical, chemical and biochemical sensors, including remote sensing and sensor networks. Both experimental and theoretical papers are published, including all aspects of sensor design, technology, proof of concept and application. *Sensors* organizes Special Issues devoted to specific sensing areas and applications each year.

Author Benefits

Open Access : free for readers, with [article processing charges \(APC\)](#) paid by authors or their institutions.

High Visibility: indexed within [Scopus](#), [SCIE \(Web of Science\)](#), [PubMed](#), [MEDLINE](#), [PMC](#), [Ei Compendex](#), [Inspec](#), [Astrophysics Data System](#), and [other databases](#).

Journal Rank: JCR - Q2 (*Instruments & Instrumentation*) / CiteScore - Q1 (*Instrumentation*)

Contact Us

Sensors Editorial Office
MDPI, St. Alban-Anlage 66
4052 Basel, Switzerland

Tel: +41 61 683 77 34
www.mdpi.com

mdpi.com/journal/sensors
sensors@mdpi.com
[X@Sensors_MDPI](#)