

Supplementary Materials

Contents

Figure S1 The molecular structure of quercetin.

Figure S2 RT-qPCR validation of selected differential expressed genes of *S. aureus* ATCC 27217 under different quercetin treatments.

Figure S3. The inhibition rate of quercetin and resveratrol on FabG.

Table S1. Primer sequences used for RT-qPCR analysis.

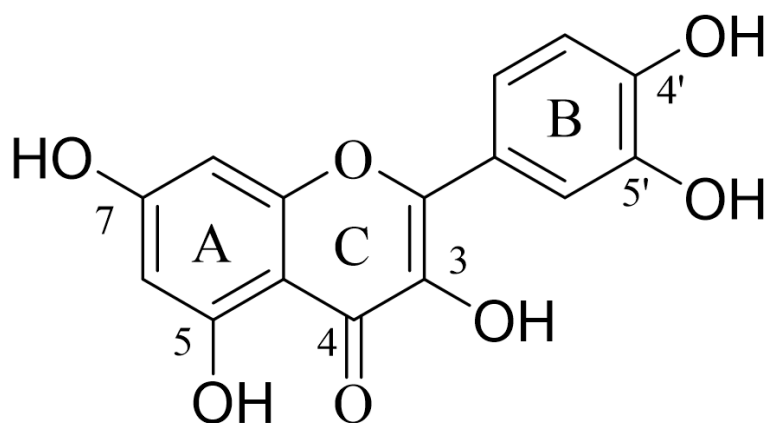


Figure S1 The molecular structure of quercetin.

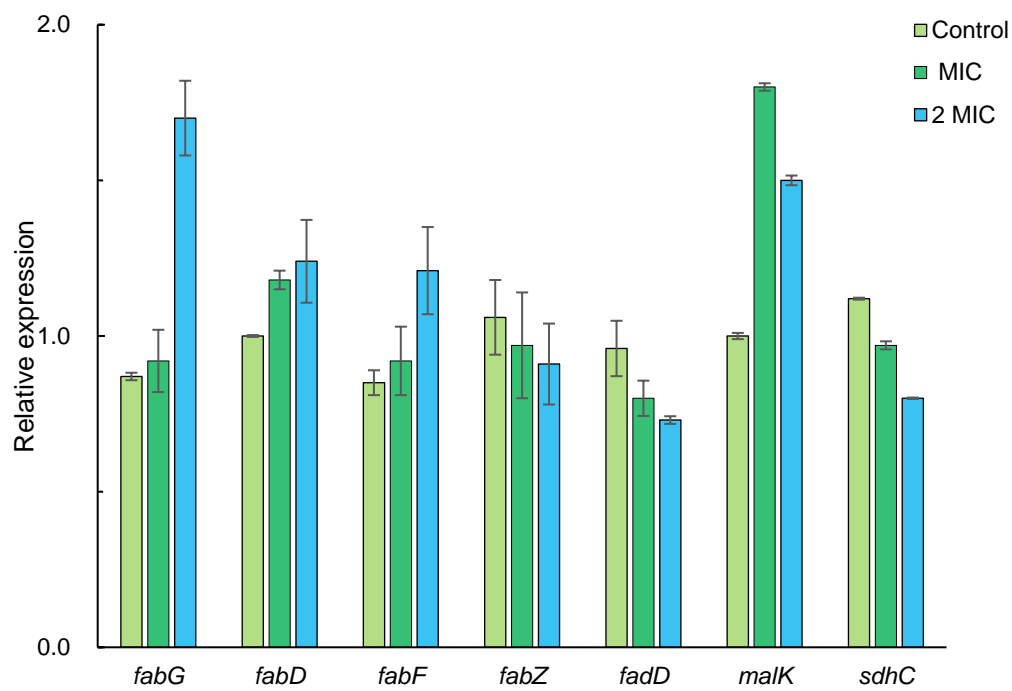


Figure S2 RT-qPCR validation of selected differential expressed genes of *S. aureus* ATCC 27217 under different quercetin treatments. Error bars represent the standard deviations (SD) from four repeated experiments.

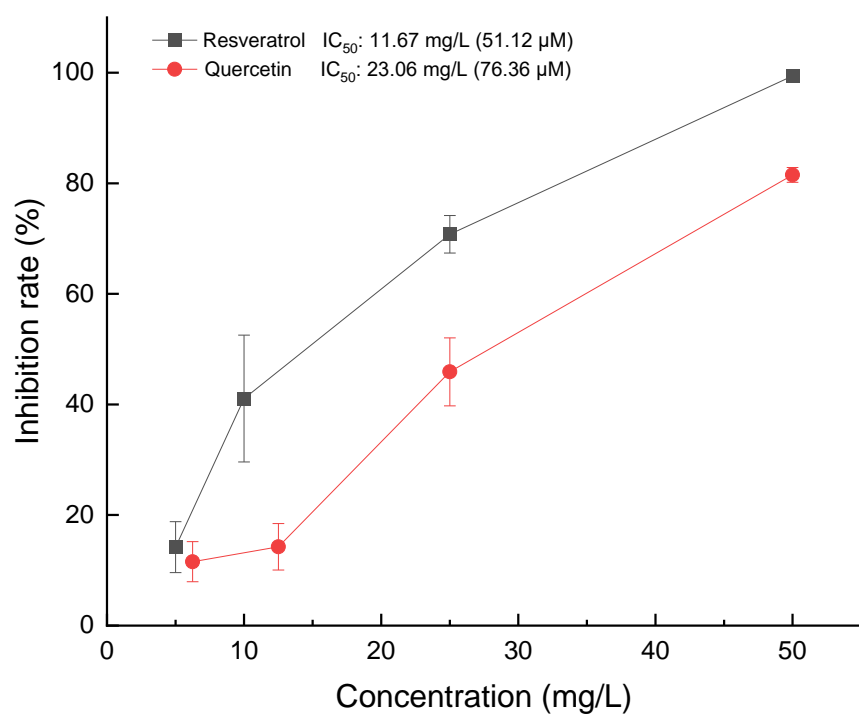


Figure S3. The inhibition rate of quercetin and resveratrol on FabG.

Table S1. Primer sequences used for RT-qPCR analysis.

Gene	Primer	Sequence (5'-3')	Length
<i>fabG</i>	<i>fabG</i> -F	GTTGCCGATGCTGATGAAGT	137 bp
	<i>fabG</i> -R	TCATCCCACCTCTTGTTCTTTCA	
<i>fabD</i>	<i>fabD</i> -F	TTGACGCATAGTTCGGCATT	197 bp
	<i>fabD</i> -R	ACTGCAGCCATGCTTCCTACA	
<i>fabF</i>	<i>fabF</i> -F	TTCTGGTATCGGTGGTATGGA	122 bp
	<i>fabF</i> -R	CTTGCCCAGTTGCCATATCA	
<i>fabZ</i>	<i>fabZ</i> -F	GGTATGGGCGTCGTTACAAGTA	145 bp
	<i>fabZ</i> -R	GCTATTAAAACGGGGATGATTG	
<i>fadD</i>	<i>fadD</i> -F	AGCAGAGACTGCCAAAGCAT	183 bp
	<i>fadD</i> -R	CATAGCCAACGACCACACAC	
<i>malK</i>	<i>malK</i> -F	TTGCTTTGGGCAGAGCTATT	160 bp
	<i>malK</i> -R	TGTGCCGACTTGCATAATGT	
<i>sdhC</i>	<i>sdhC</i> -F	CCTGTTGGATGCGCTATATGTC	181 bp
	<i>sdhC</i> -R	TCCAGCGAGCCATCAGGTAA	
16sRNA	16sRNA-F	CGGTGAATACGTTTCYCGG	124 bp
	16sRNA-R	GGWTACCTTGTTACGACTT	