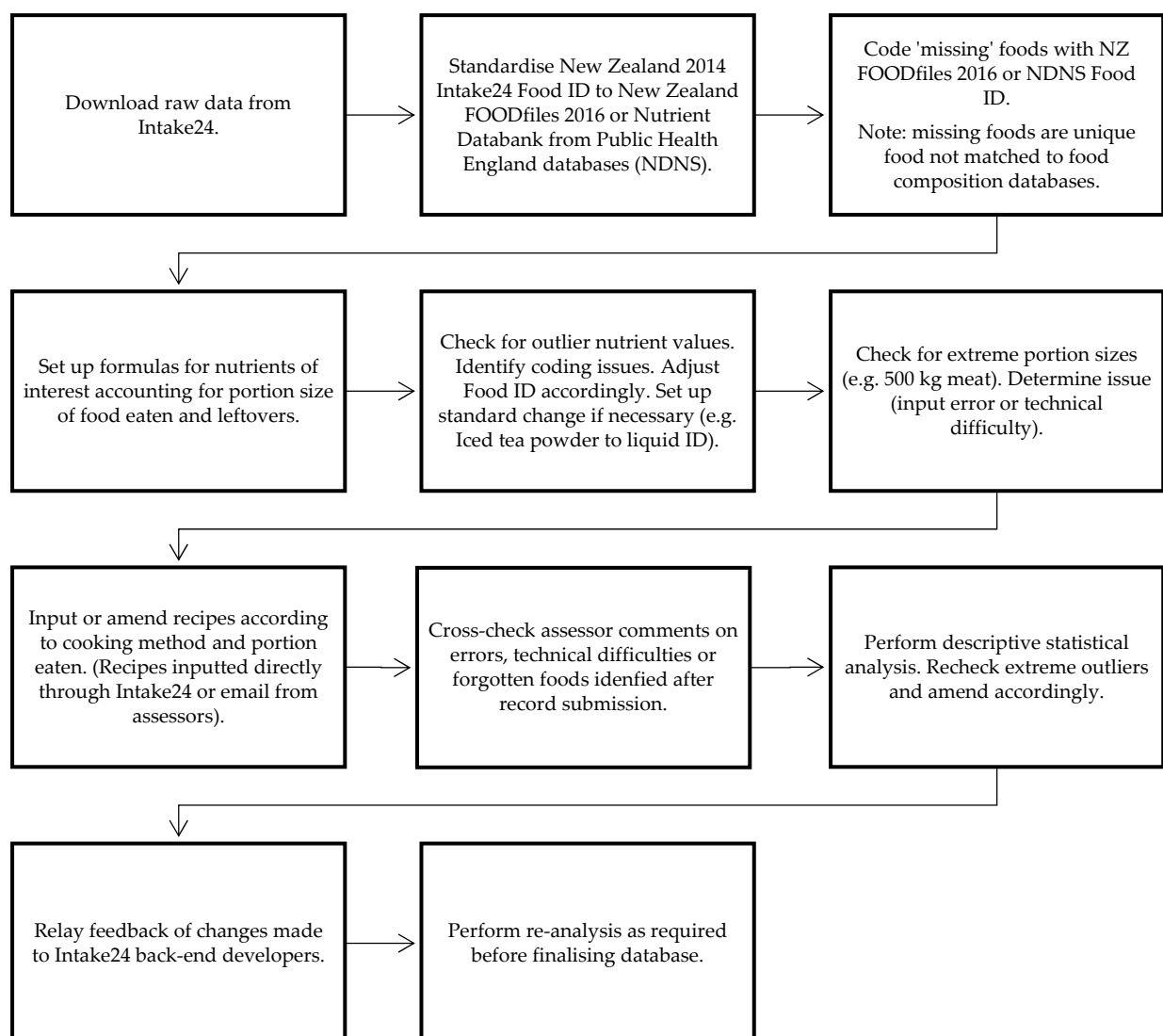


# Sociodemographic and Health Indicators of Diet Quality in Pre-Frail Older Adults in New Zealand

Esther Tay <sup>1</sup>, Daniel Barnett <sup>2</sup>, Maisie Rowland <sup>3</sup>, Ngaire Kerse <sup>1</sup>, Richard Edlin <sup>4</sup>,  
Debra L. Waters <sup>5,6,7</sup>, Martin Connolly <sup>8</sup>, Avinesh Pillai <sup>2</sup>, Evelingi Tupou <sup>1</sup> and Ruth Teh <sup>1,\*</sup>

## Supplementary Material

### Materials and Methods



**Figure S1** Summary of systems and changes implemented for cleaning Intake24 data.

**Table S1.** Multivariate regression against DQI-I score and subcomponents for Low Energy Reporter (LER) only.

Demographic and health variables	B	95% Wald CI	<i>p</i> -value
<b>DQI-I total score</b>			
(Intercept)	58.567	52.248, 64.887	<0.001
Live alone; (reference: with others)	2.480	-0.300, 5.260	0.080
Alcohol consumption (never; reference: regular)	-2.382	-5.921, 1.156	0.187
(Occasional; reference: regular)	0.680	-2.404, 3.764	0.666
Vision (impaired; reference: non impaired)	-3.890	-9.254, 1.474	0.155
Deprivation (low; reference: high)	2.436	-1.027, 5.898	0.168
(Medium; reference: high)	2.125	-1.208, 5.457	0.211
(Scale)	68.016	54.281, 85.226	
<b>Variety score</b>			
(Intercept)	7.743	3.259, 12.227	<0.001
Live alone; (reference: with others)	0.987	-0.086, 2.059	0.071
Waist circumference, cm	0.027	-0.015, 0.069	0.207
GDS score (no depression; reference: depression)	0.894	-0.473, 2.261	0.200
(Scale)	10.709	8.533, 13.438	
<b>Adequacy score</b>			
(Intercept)	16.864	10.581, 23.147	<0.001
Deprivation (low; reference: high)	1.499	-0.344, 3.341	0.111
(Medium; reference: high)	2.489	0.689, 4.289	0.007
Waist circumference, cm	0.083	0.025, 0.141	0.005
Alcohol consumption (never; reference: regular)	-0.920	-2.854, 1.014	0.351
(Occasional; reference: regular)	0.022	-1.626, 1.669	0.979
(Scale)	19.614	15.630, 24.615	
<b>Moderation score</b>			
(Intercept)	20.251	16.143, 24.359	<0.001
Sex (male; reference: female)	-1.777	-3.135, -0.419	0.010
BMI, kg/m <sup>2</sup>	-0.177	-0.303, -0.051	0.006
Live alone; (reference: with others)	0.602	-0.762, 1.966	0.387
(Scale)	15.798	12.598, 19.810	
<b>Balance score</b>			
(Intercept)	5.391	3.779, 7.004	<0.001
Supplements (0; reference: 1+)	0.514	0.028, 1.000	0.038
BMI, kg/m <sup>2</sup>	-0.031	-0.078, 0.016	0.189
Sex (male; reference: female)	0.401	-0.087, 0.889	0.107
Education level (primary; reference: tertiary)	-0.989	-2.500, 0.522	0.199
(Secondary; reference: tertiary)	-0.097	-0.584, 0.391	0.698
(Scale)	2.188	1.745, 2.744	

Italicized *p*-values are significant at the 0.05 level.

**Table S2.** Multivariate regression against DQI-I score and subcomponents for plausible reporters only.

Demographic and health variables	B	95% Wald CI	<i>p</i> -value
<b>DQI-I total score</b>			
(Intercept)	59.995	51.618, 68.372	<0.001
Ethnic group (European; reference: non-European)	3.034	0.016, 6.052	0.049
Waist circumference, cm	-0.039	-0.113, 0.035	0.299
Live alone; (reference: with others)	0.807	-0.936, 2.550	0.364
Deprivation (low; reference: high)	1.443	-0.695, 3.581	0.186
(Medium; reference: high)	0.893	-1.330, 3.116	0.431
(Scale)	59.223	50.634, 69.267	
<b>Variety score</b>			
(Intercept)	13.526	12.693, 14.360	<0.001
Medications (1; reference: 2+)	1.191	-0.024, 2.406	0.055
Sex (male; reference: female)	0.491	-0.192, 1.173	0.159
Deprivation (low; reference: high)	0.624	-0.190, 1.437	0.133
(Medium; reference: high)	0.751	-0.094, 1.596	0.082
Alcohol consumption (never; reference: regular)	-0.682	-1.557, 0.193	0.127
(Occasional; reference: regular)	-0.278	-1.041, 0.486	0.476
(Scale)	8.812	7.534, 10.306	
<b>Adequacy score</b>			
(Intercept)	21.257	16.126, 26.387	<0.001
Ethnic group (European; reference: non-European)	2.088	0.724, 3.453	0.003
Smoking (non-smoker; reference: smoker)	4.062	0.457, 7.666	0.027
Education level (primary; reference: tertiary)	-1.833	-4.165, 0.499	0.123
(Secondary; reference: tertiary)	0.079	-0.750, 0.908	0.851
NEADL score	0.161	-0.026, 0.348	0.091
(Scale)	13.025	11.136, 16.234	
<b>Moderation score</b>			
(Intercept)	14.275	8.80, 19.744	<0.001
Live alone; (reference: with others)	0.927	0.031, 1.823	0.043
Age, (<80 years; reference: 80+ years)	-0.452	-1.356, 0.452	0.327
MoCA score (not impaired; reference: impaired)	0.778	-0.244, 1.799	0.136
Waist circumference, cm	-0.048	-0.084, -0.012	0.010
NEADL score	0.047	-0.156, 0.250	0.647
(Scale)	14.938	12.771, 17.471	
<b>Balance score</b>			
(Intercept)	4.652	4.259, 5.046	<0.001
Alcohol consumption (never; reference: regular)	0.674	0.256, 1.092	0.002
(Occasional; reference: regular)	0.373	0.011, 0.734	0.043
MoCA score (not impaired; reference: impaired)	-0.590	-0.966, -0.214	0.002
(Scale)	2.040	1.744, 2.386	

Italicized *p*-values are significant at the 0.05 level.

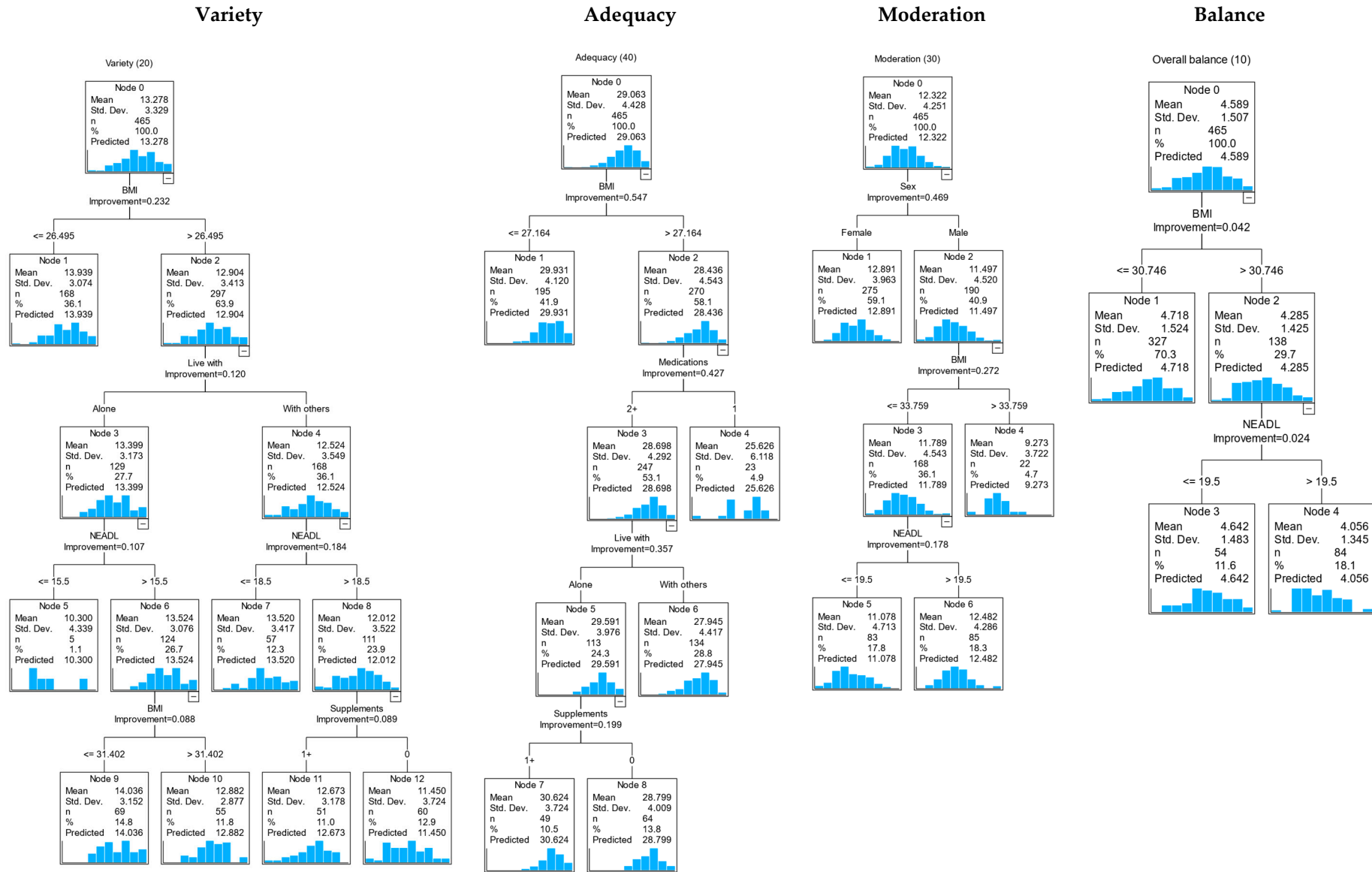
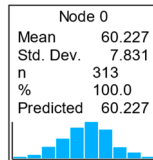


Figure S2. CART diagram of factors associated with DQI-I subcomponents in pre-frail older adults

Plausible reporters only

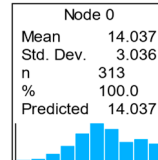
Total DQI-I

Total DQI-I (/100)



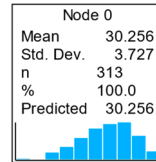
Variety

Variety (20)



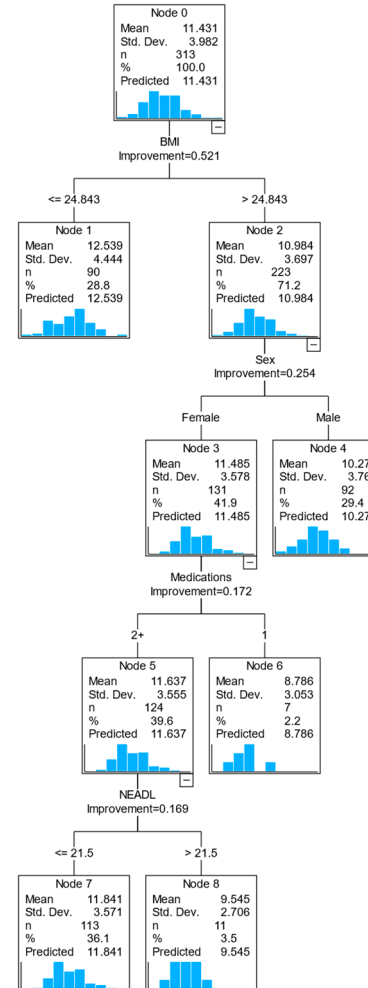
Adequacy

Adequacy (40)



Moderation

Moderation (30)



Balance

Overall balance (10)

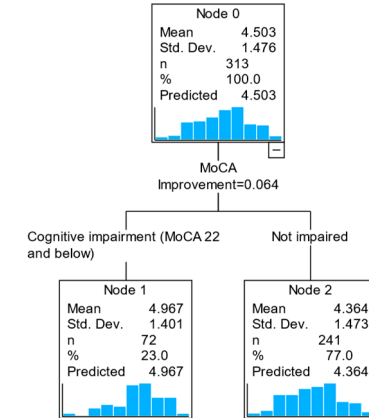
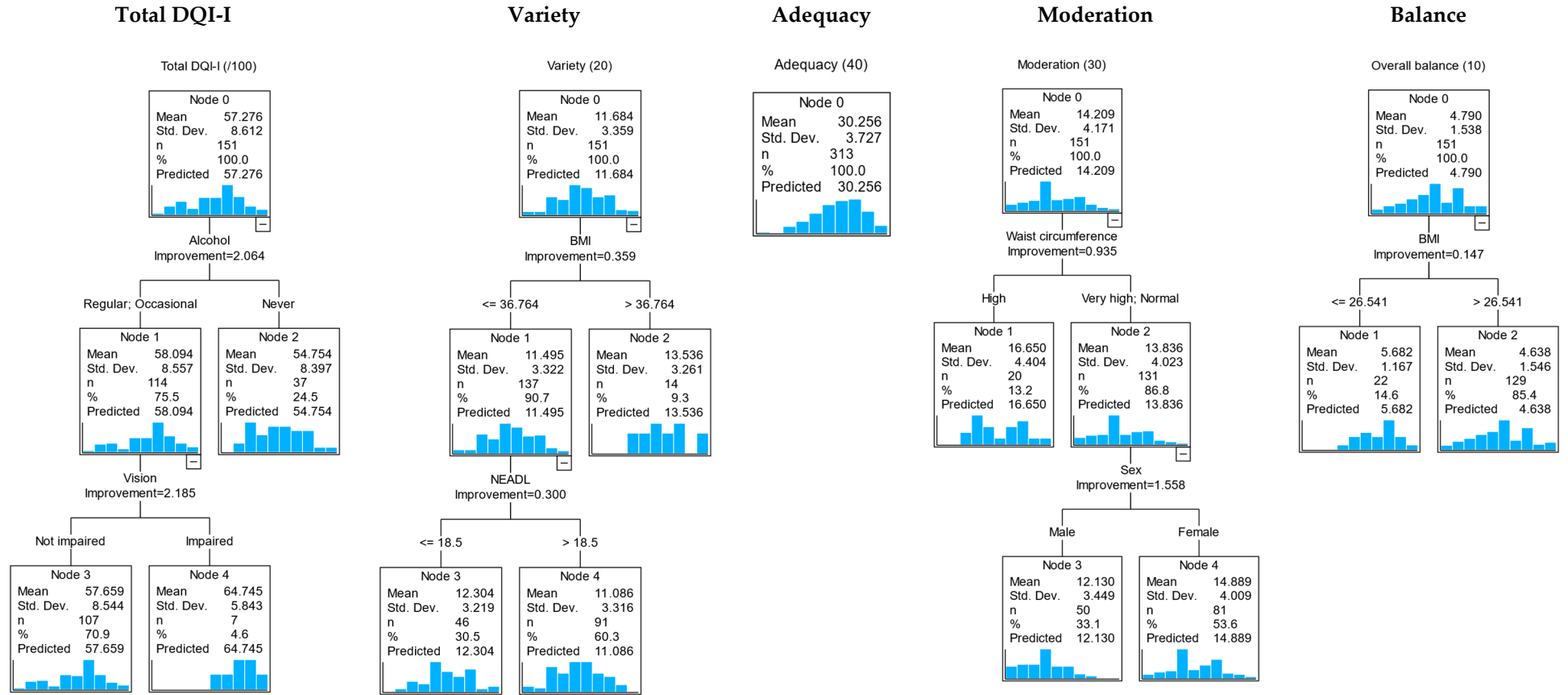


Figure S3. CART diagram of factors associated with DQI-I and subcomponents in pre-frail older adults for plausible reporter (PR) only.

## Low Energy Reporters only



**Figure S4.** CART diagram of factors associated with DQI-I and subcomponents in pre-frail older adults for LER only.