

Figure S1 Expression of the endothelial marker VE-Cadherin in cell cultures. Representative western blot for eCRC560 (Lane 1-4) and endothelial HUVECs (Lane 5-6) incubated with antibodies against VE-cadherin. Proteins were extracted from eCRC560 cells at passage 4 (Lane 1-2) and passage 15 (Lane 3-4). Anti-GAPDH was used as an internal control.

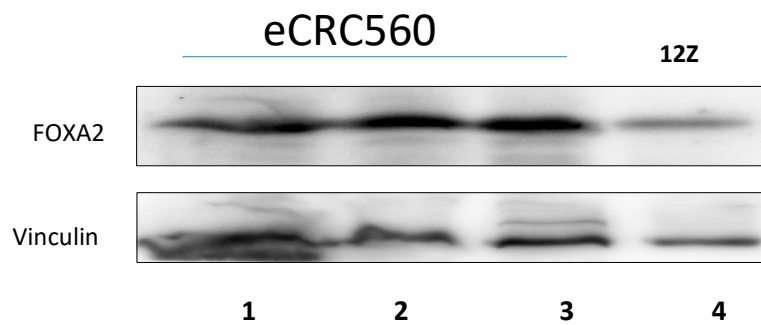


Figure S2 Expression of the uterine glandular epithelial specific marker FOXA2 in cell cultures. Representative western blot for eCRC560 (Lane 1-3) and Immortalized human endometriotic *epithelial cells* (Lane 4) incubated with antibodies against FOXA2. Proteins were extracted from eCRC560 cells at passage 4 (Lane 1-2) and passage 15 (Lane 3). Anti-vinculin was used as an internal control

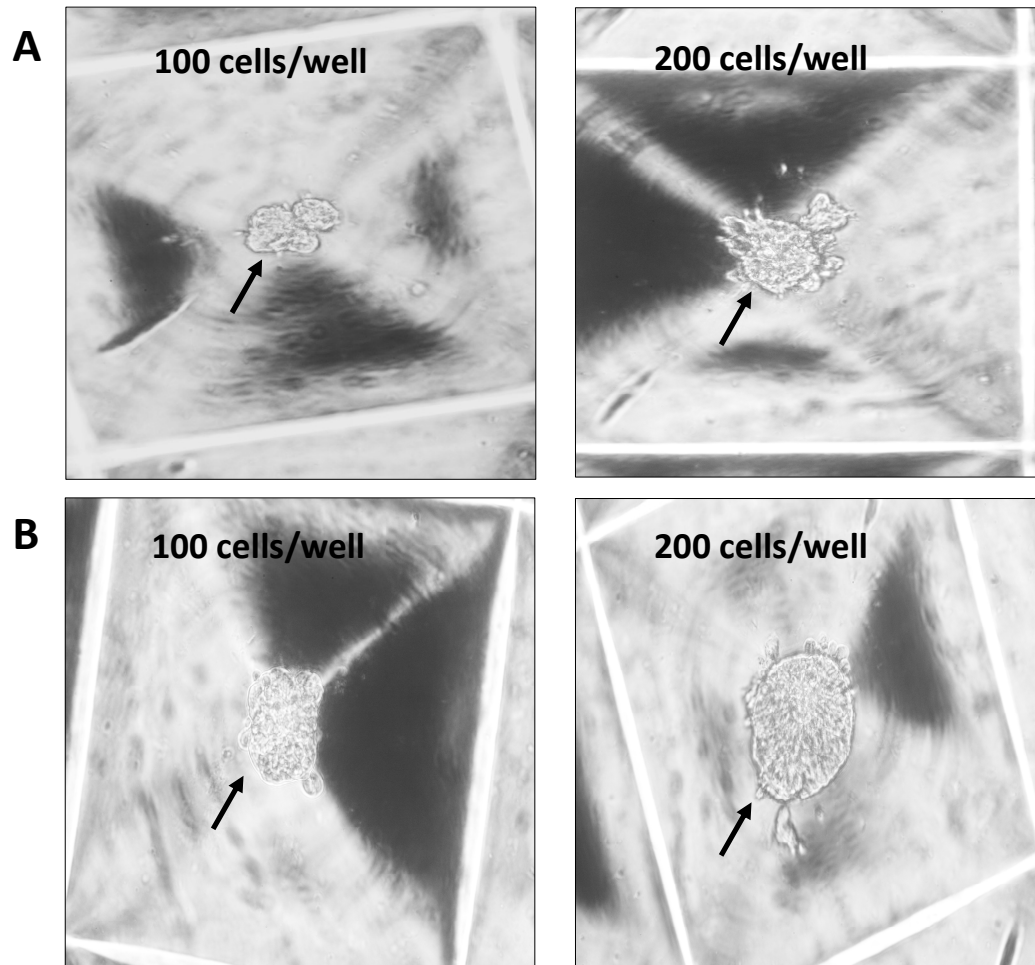


Figure S3 Human endometrial epithelial spheroids. Phase-contrast microscopic images of spheroids (arrows) generated after 24 hr (A) and 48 hr (B) in the Sphericalplate 5D. Magnification: 20x.