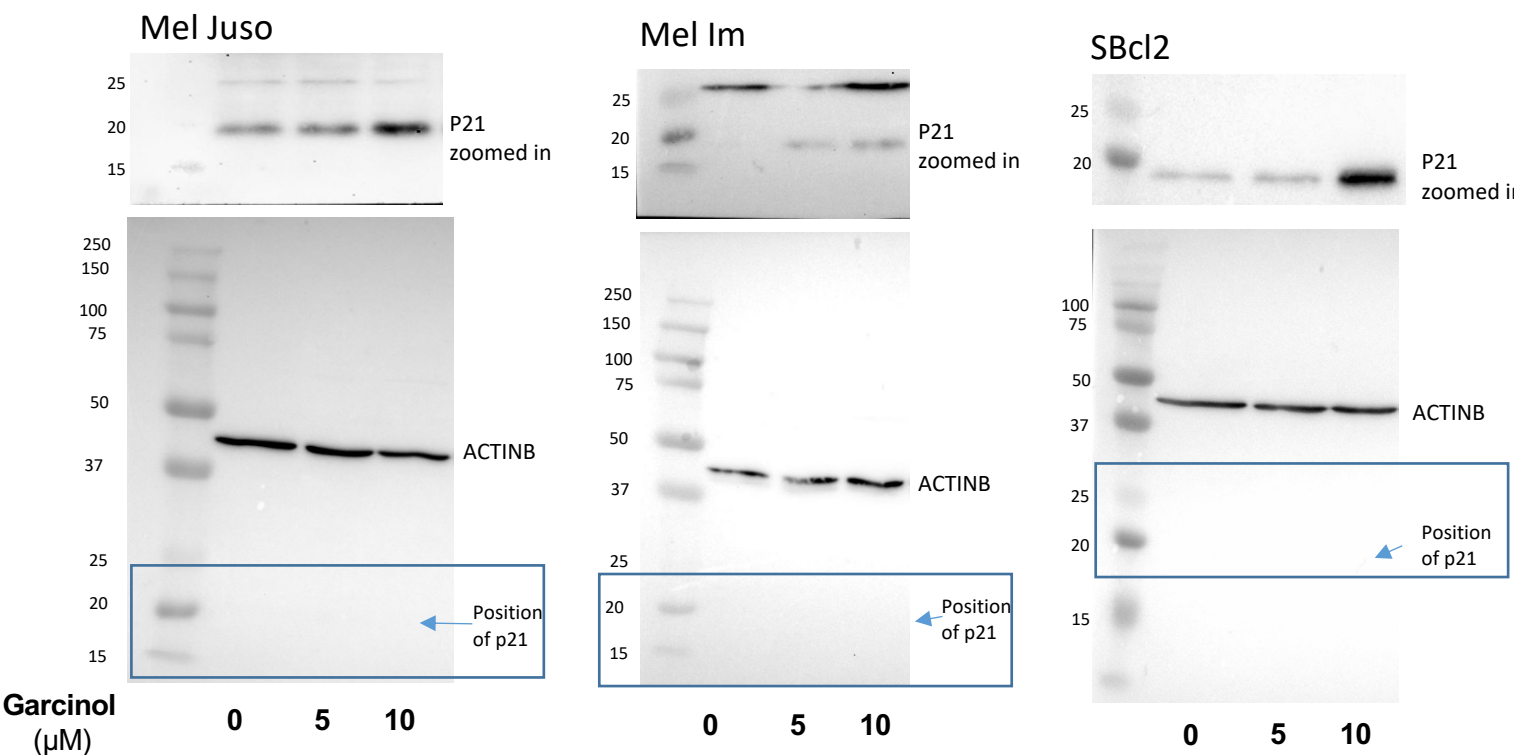


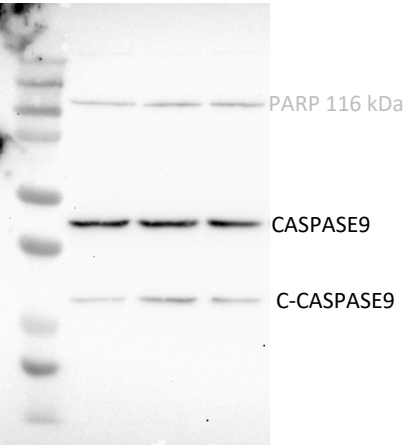
Figure 2 A



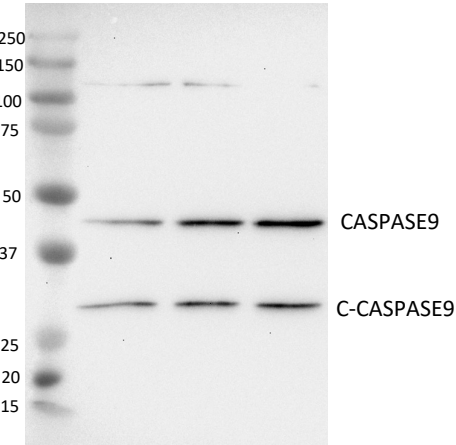
We do not have the complete western blots for p21 because the molecule was so difficult to detect at the edge of the gel. However, based on the comparison of the standard, we can see where the band is located and that it is the appropriate loading control.

Figure 2 C

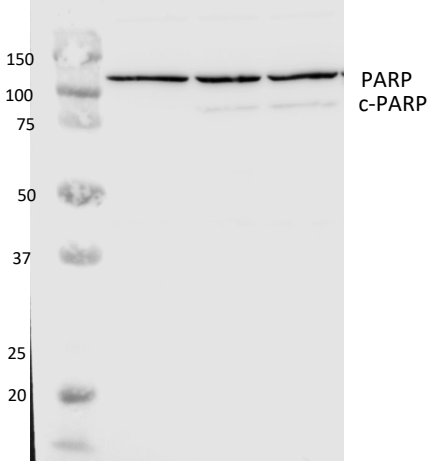
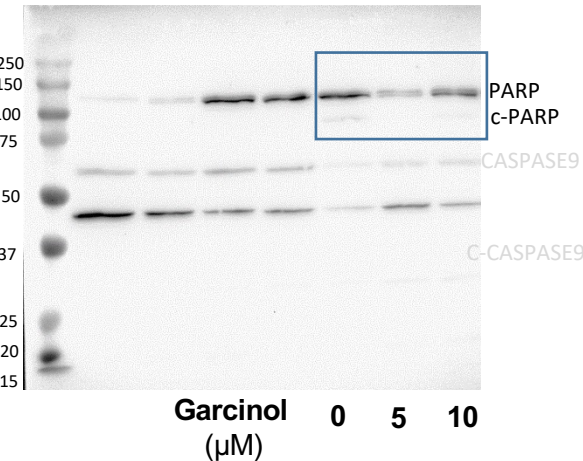
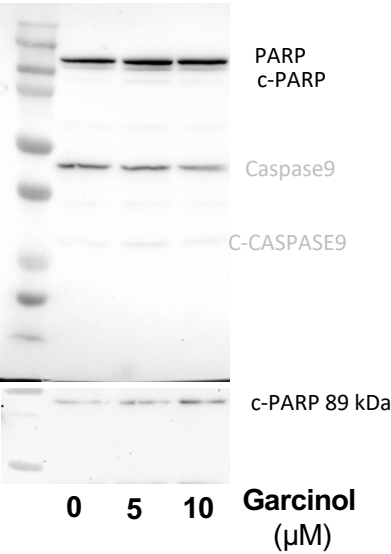
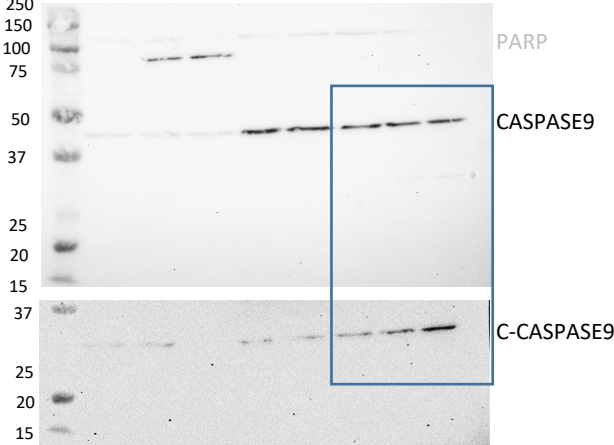
Mel Juso



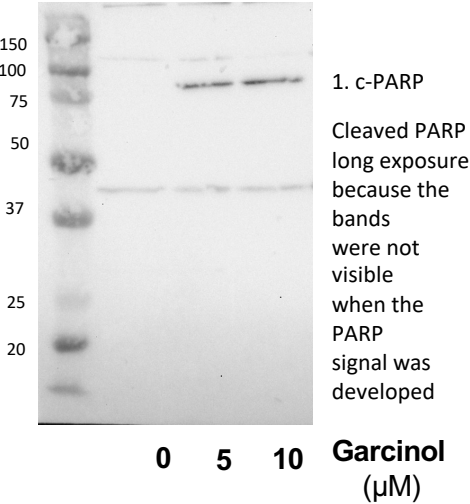
Mel Im



SBcl2

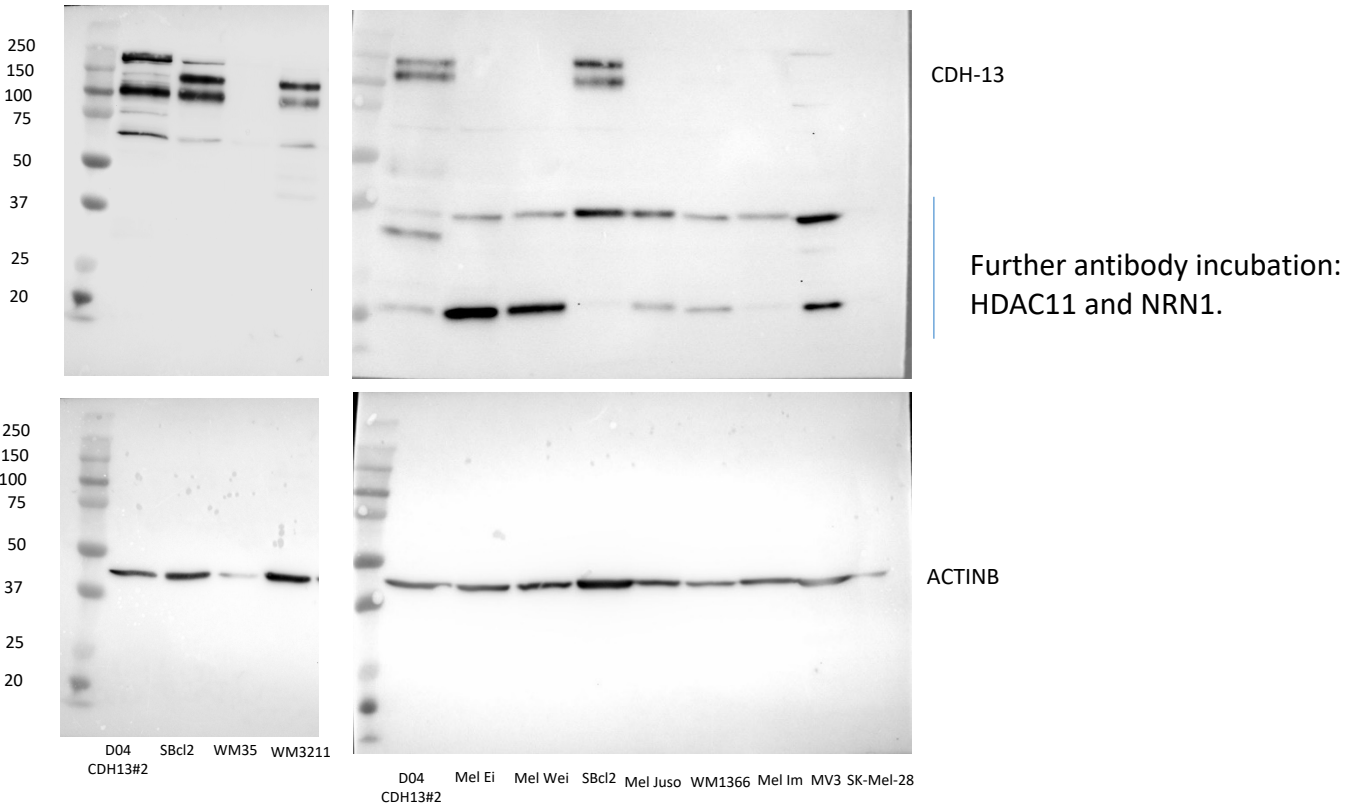


cleaved PARP:
long exposure
because the
bands
were not
visible
when the
strong PARP
signal was
developed



1. c-PARP
Cleaved PARP
long exposure
because the
bands
were not
visible
when the
PARP
signal was
developed

Figure 3A



The double band observed in the western blots reflects the expression of the mature CDH13 (105 kDa) and the uncleaved CDH13 precursor (130 kDa). Lower bands are shedded CDH13.

Figure 3 B

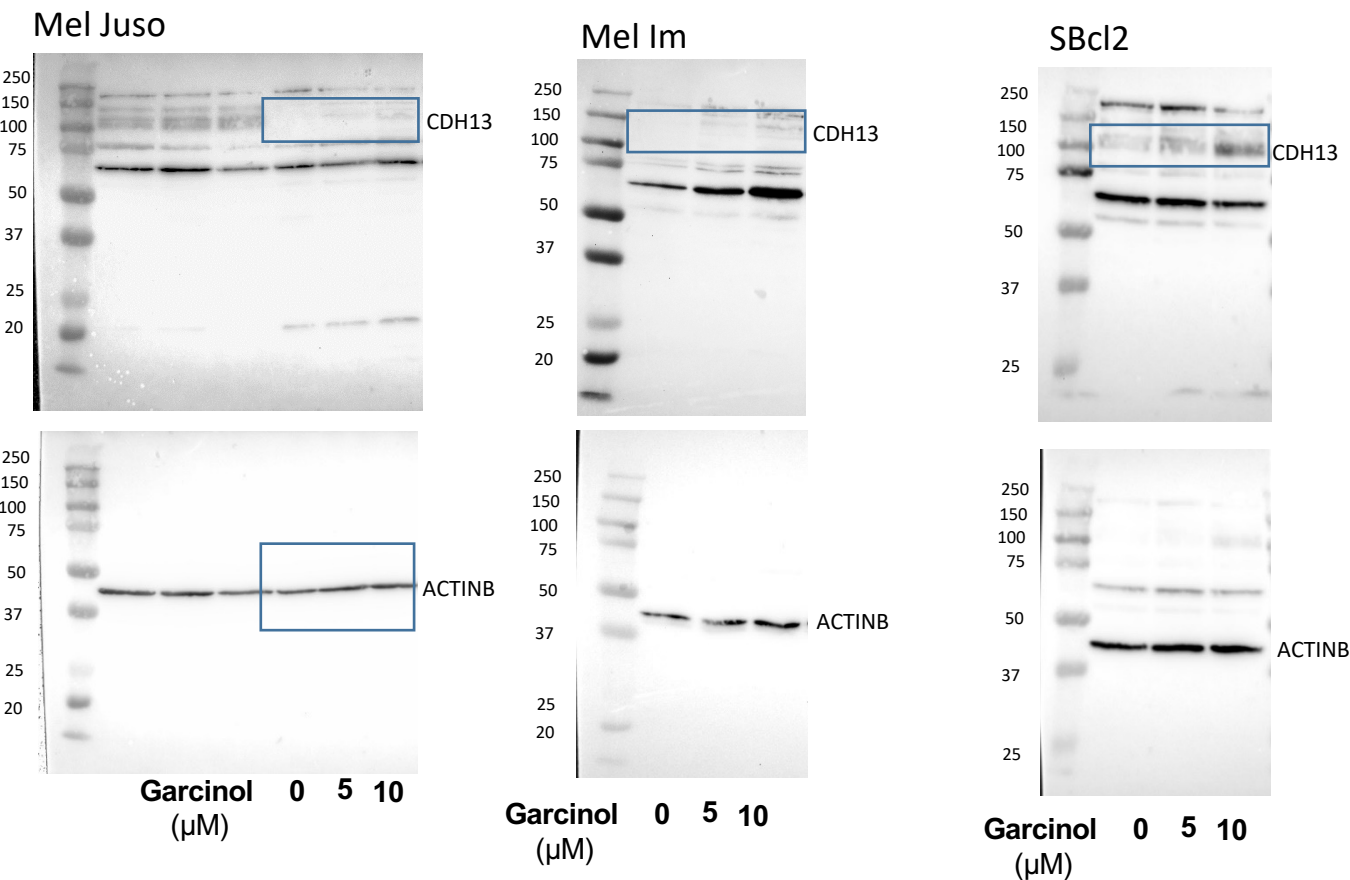
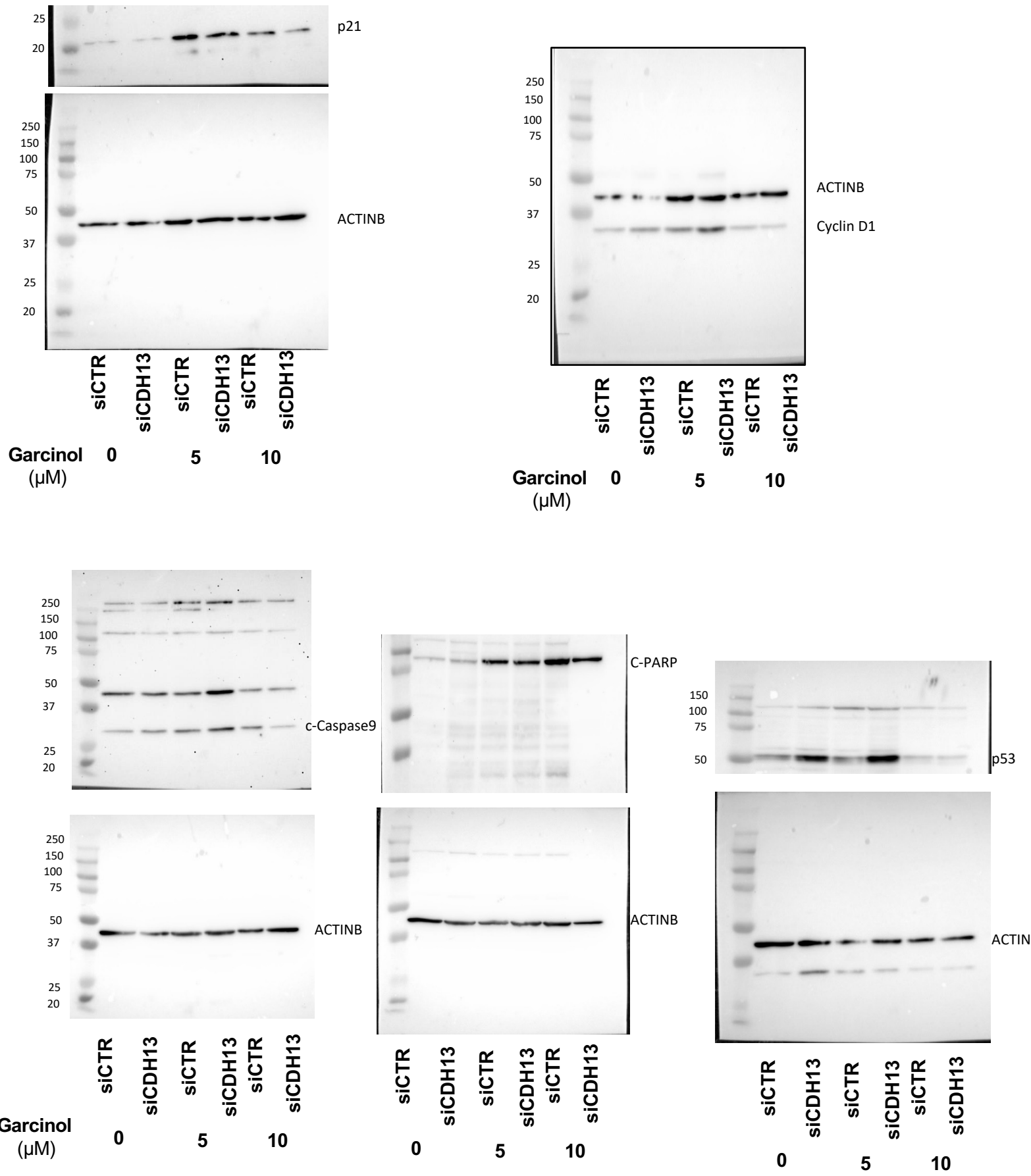


Figure 4 A, B, D, E, F



Supplementary Figure 1

