

Supporting Information

Mineralization of octacalcium phosphate under magnetic field

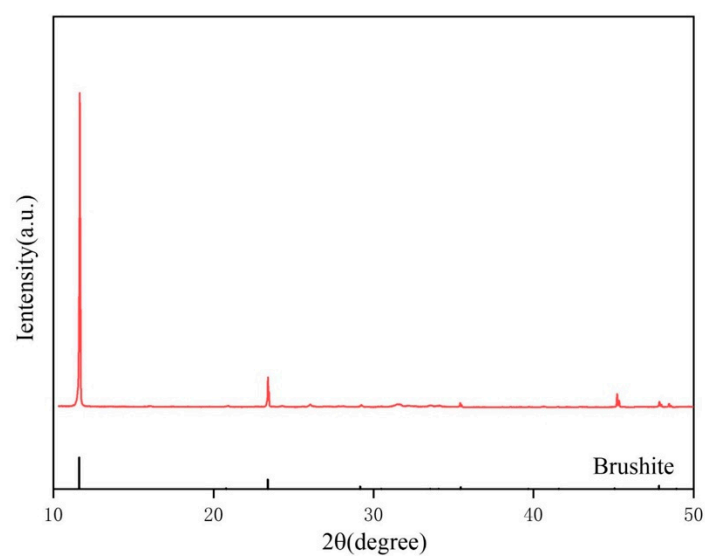


Figure S1. XRD pattern of DCPD crystals generated in gel medium.

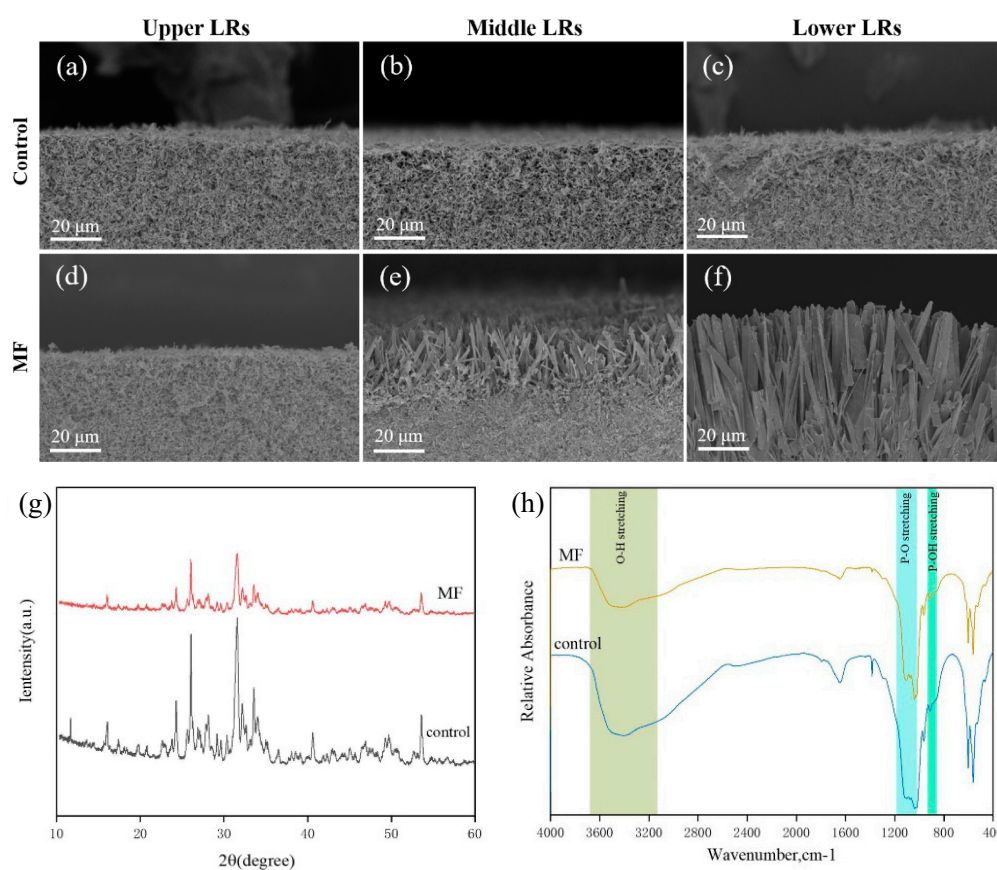


Figure S2. SEM images of LR in samples after mineralization at 25°C for 14 days (a, b, c) without magnetic field, (d, e, f) with magnetic field; (g) XRD and (h) FT-IR of Lower LR

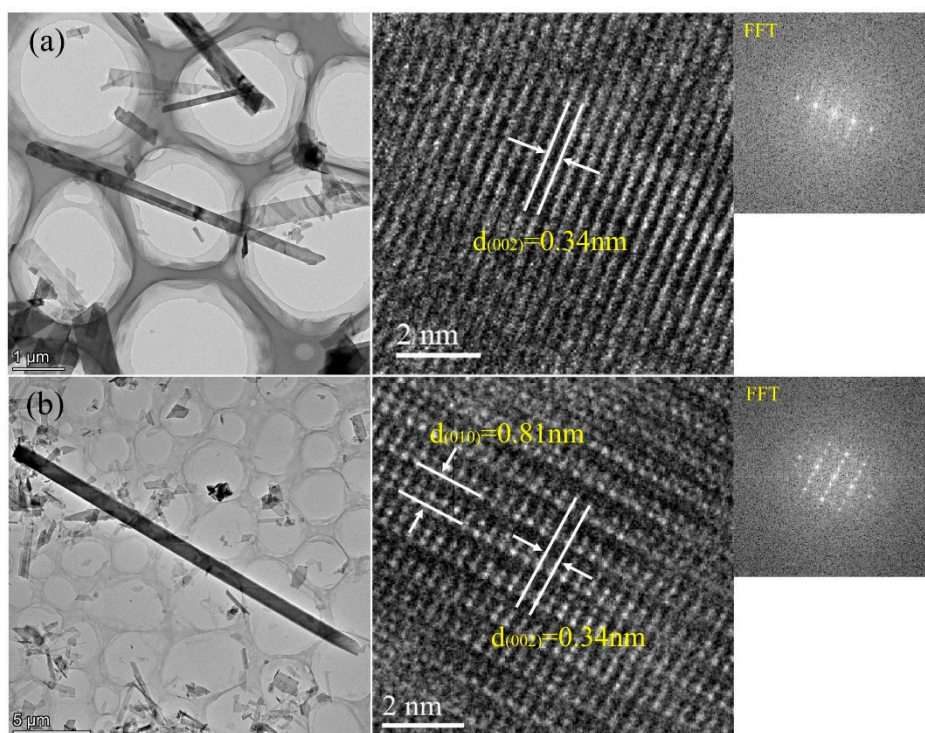


Figure S3 HRTEM images and corresponding FFT patterns of belt-like particle (a) Sample of Lower LR without magnetic field at 37°C (b) Sample of Lower LR with magnetic field at 37°C.