

## *Supporting Information for*

# **Potentiating Gilteritinib Efficacy by Nanocomplexation with Hyaluronic Acid-Epigallocatechin Gallate Conjugate**

**Ki Hyun Bae <sup>1,2</sup>, Fritz Lai <sup>3</sup>, Qingfeng Chen <sup>3,4</sup>, and Motoichi Kurisawa <sup>2,5,\*</sup>**

<sup>1</sup>Bioprocessing Technology Institute (BTI), Agency for Science, Technology and Research (A\*STAR), 20 Biopolis Way, Centros #06-01, Singapore 138668, Republic of Singapore; khbae@bti.a-star.edu.sg (K.H.B.)

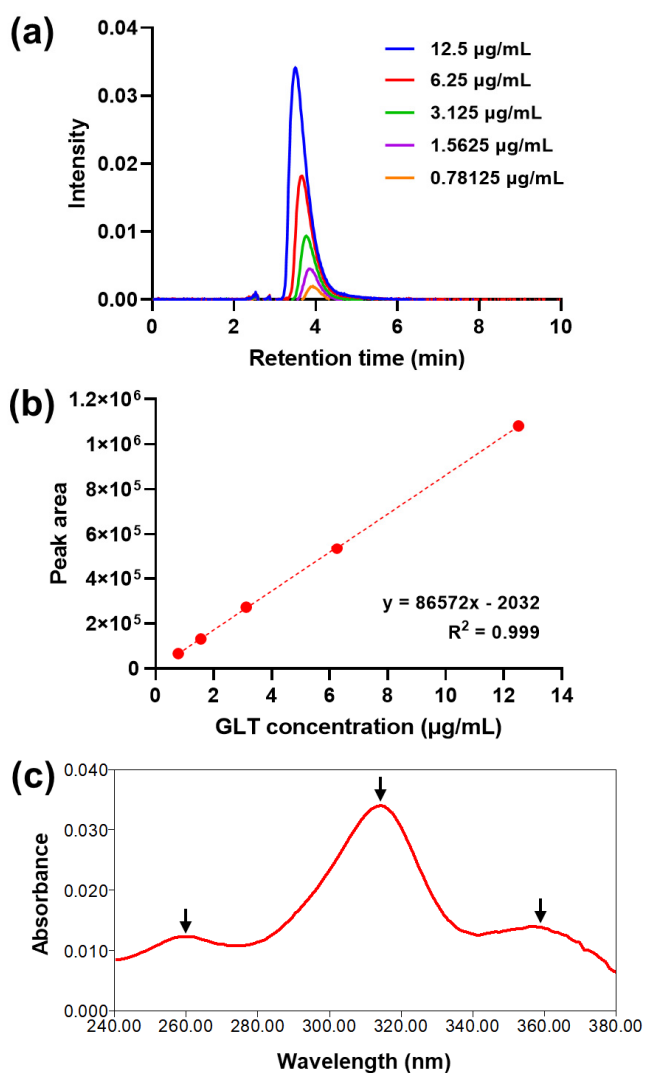
<sup>2</sup>Institute of Bioengineering and Bioimaging (IBB), Agency for Science, Technology and Research (A\*STAR), 31 Biopolis Way, The Nanos #08-01, Singapore 138669, Republic of Singapore

<sup>3</sup> Institute of Molecular and Cell Biology (IMCB), Agency for Science, Technology and Research (A\*STAR), 61 Biopolis Drive, The Proteos, Singapore 138673, Republic of Singapore; sclai@imcb.a-star.edu.sg (F.L.); qchen@imcb.a-star.edu.sg (Q.C.)

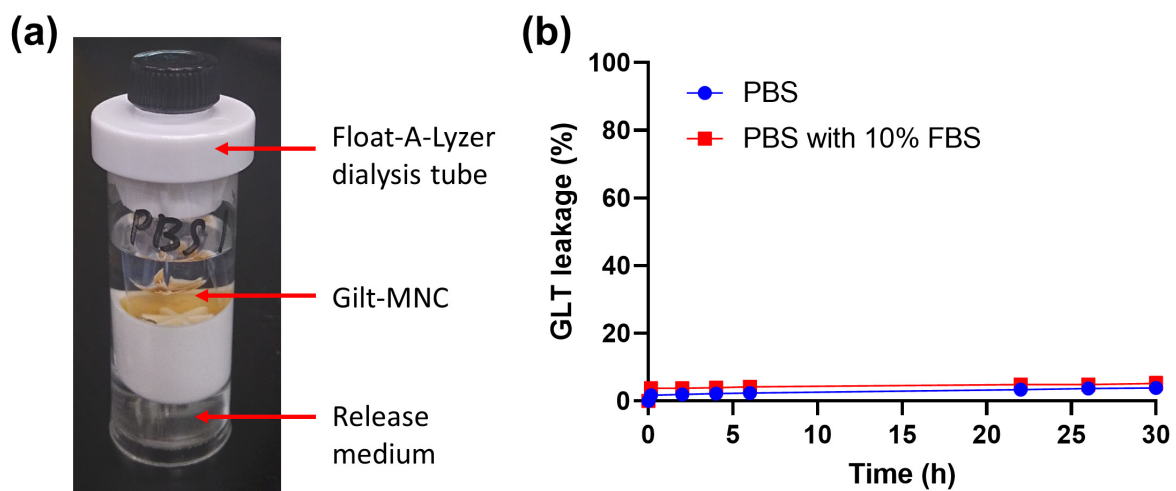
<sup>4</sup> Key Laboratory for Major Obstetric Diseases of Guangdong Province, The Third Affiliated Hospital of Guangzhou Medical University, Guangzhou, China

<sup>5</sup> School of Materials Science, Japan Advanced Institute of Science and Technology, 1-1 Asahidai, Nomi, Ishikawa 923-1292, Japan; kurisawa@jaist.ac.jp (M.K.)

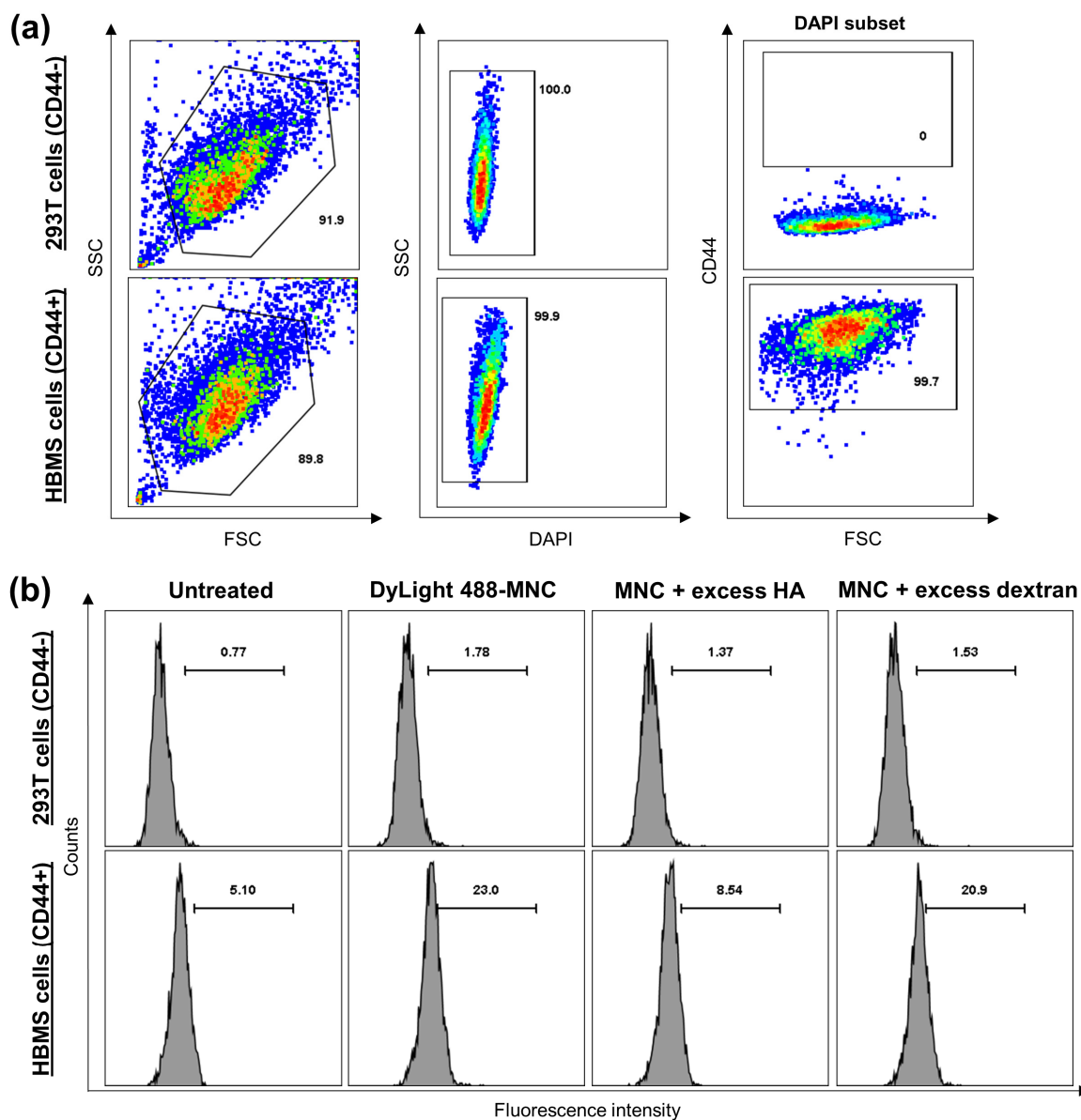
\*Correspondence: kurisawa@jaist.ac.jp



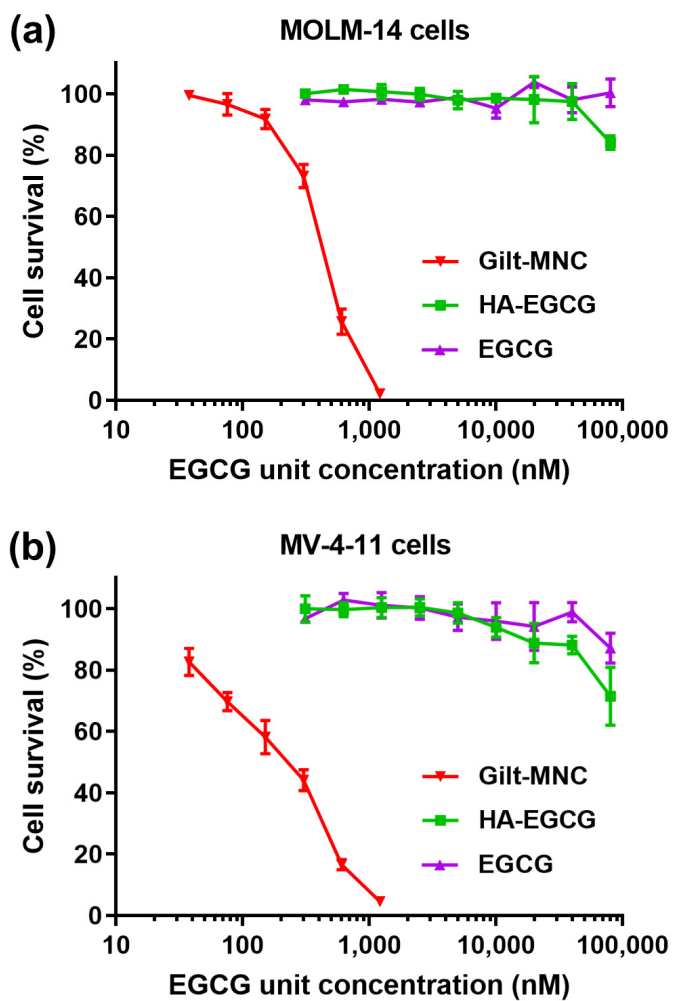
**Figure S1.** (a) Representative RP-HPLC chromatogram of GLT solutions at varying concentrations. (b) Calibration curves obtained with the average peak area of 5 different GLT concentrations. (c) UV absorption spectrum of GLT solution at a concentration of 12.5 µg/mL. The arrows indicate the characteristic peaks of GLT at 260, 314 and 358 nm.



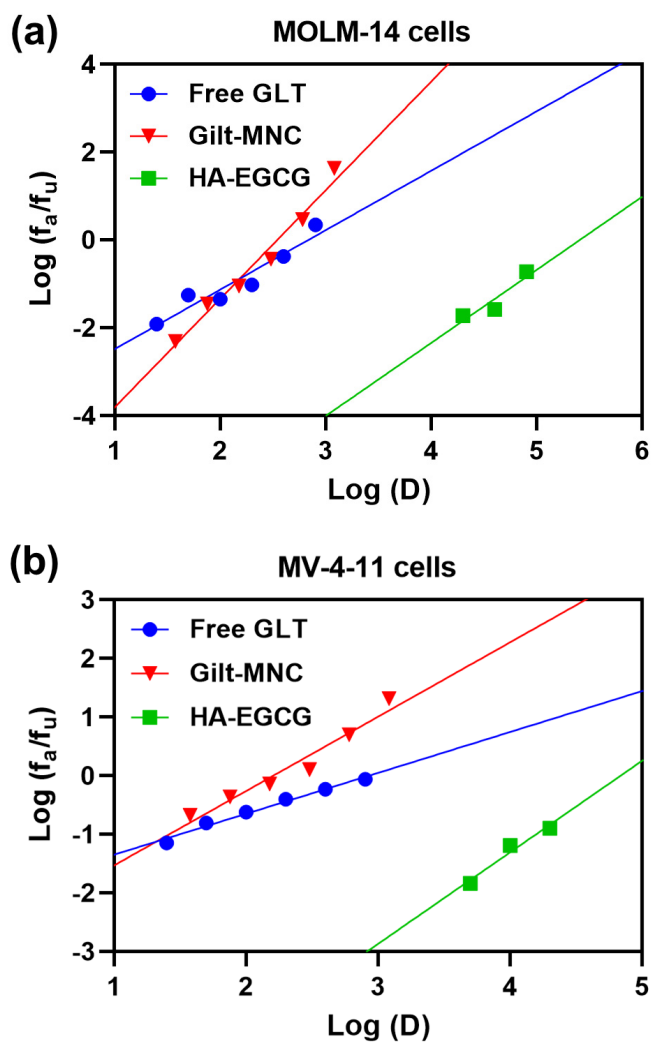
**Figure S2.** (a) Photograph showing the experimental set-up for GLT release study. (b) Leakage of GLT from Gilt-MNC incubated in 10 mM PBS (pH 7.4) without or with 10% FBS. Mean  $\pm$  SD ( $n = 4$ ).



**Figure S3.** (a) Evaluation of CD44 expression on 293T and HBMS cells. (b) Flow cytometry histograms showing the accumulation of DyLight488-labeled Gilt-MNC in 293T and HBMS cells following the treatment for 4 h with or without excess HA or dextran.



**Figure S4.** Cytotoxicity of native EGCG, HA-EGCG and Gilt-MNC-1 against **(a)** MOLM-14 and **(b)** MV-4-11 cell lines at varying EGCG unit concentrations. Mean  $\pm$  SD ( $n = 3$ ).



**Figure S5.** Median-effect plots derived from the cytotoxicity of free GLT, HA-EGCG or their combination (Gilt-MNC) against **(a)** MOLM-14 and **(b)** MV-4-11 cell lines.