

Supplementary material

Table S1. Collected samples and metadata.

	Year	Plot	Phytosanitary treatment	Soil management
C1A17	2017	1	IPM	ST
C2A17	2017	2	IPM	ST
C3A17	2017	3	IPM	ST
C4A17	2017	4	IPM	ST
C5A17	2017	5	IPM	ST
T1A20P	2020	1	IPM	PCC
T1B20P	2020	1	IPM	PCC
T1C20P	2020	1	IPM	PCC
T1A20G	2020	1	IPM	GM
T1B20G	2020	1	IPM	GM
T1C20G	2020	1	IPM	GM
T2A20P	2020	2	IPM_50_GG	PCC
T2B20P	2020	2	IPM_50_GG	PCC
T2C20P	2020	2	IPM_50_GG	PCC
T2A20G	2020	2	IPM_50_GG	GM
T2B20G	2020	2	IPM_50_GG	GM
T2C20G	2020	2	IPM_50_GG	GM
T3A20P	2020	3	BIO	PCC
T3B20P	2020	3	BIO	PCC
T3C20P	2020	3	BIO	PCC
T3A20G	2020	3	BIO	GM
T3B20G	2020	3	BIO	GM
T3C20G	2020	3	BIO	GM
T4A20P	2020	4	BIO_50_GG	PCC
T4B20P	2020	4	BIO_50_GG	PCC
T4C20P	2020	4	BIO_50_GG	PCC
T4A20G	2020	4	BIO_50_GG	GM
T4B20G	2020	4	BIO_50_GG	GM
T4C20G	2020	4	BIO_50_GG	GM
T5A20P	2020	5	GG	PCC
T5B20P	2020	5	GG	PCC
T5C20P	2020	5	GG	PCC
T5A20G	2020	5	GG	GM
T5B20G	2020	5	GG	GM
T5C20G	2020	5	GG	GM

Table S2. Values of the soil chemical parameters *per* sample.

	TN%	TOC%	C:N	CaCO ₃ %	pH
C1A17	0.036	0.561	15.725	19.475	8.2
C2A17	0.074	1.018	13.780	29.886	8.0
C3A17	0.106	1.280	12.034	17.550	8.1
C4A17	0.054	0.819	15.263	19.778	8.0
C5A17	0.104	1.310	12.555	14.182	8.0
T1A20P	0.055	0.771	13.957	16.537	8.1
T1B20P	0.024	0.446	18.723	22.549	8.2
T1C20P	0.047	0.698	15.007	24.109	8.2
T1A20G	0.049	0.716	14.567	17.449	8.1
T1B20G	0.035	0.590	16.629	19.051	8.2
T1C20G	0.035	0.680	19.672	16.777	8.0
T2A20P	0.071	0.991	14.024	22.928	8.0
T2B20P	0.056	0.726	13.072	26.551	8.1
T2C20P	0.068	1.230	18.202	28.817	8.1
T2A20G	0.084	1.077	12.901	21.269	8.2
T2B20G	0.080	0.943	11.825	27.899	8.0
T2C20G	0.067	0.938	14.089	30.032	7.9
T3A20P	0.046	0.743	16.038	23.144	8.2
T3B20P	0.094	1.186	12.586	15.482	8.1
T3C20P	0.099	1.187	12.008	20.286	8.1
T3A20G	0.071	0.987	13.914	12.702	8.1
T3B20G	0.105	1.225	11.643	13.321	8.1
T3C20G	0.114	1.340	11.794	19.031	8.2
T4A20P	0.080	1.130	14.139	36.129	8.1
T4B20P	0.067	0.981	14.610	3.906	8.1
T4C20P	0.086	1.178	13.658	5.672	8.2
T4A20G	0.036	0.539	15.013	46.995	8.1
T4B20G	0.062	0.935	14.993	5.435	8.1
T4C20G	0.084	1.057	12.580	6.615	8.1
T5A20P	0.126	1.394	11.078	11.643	8.1
T5B20P	0.104	1.209	11.656	12.539	7.9
T5C20P	0.102	1.352	13.318	16.633	8.1
T5A20G	0.124	1.556	12.584	9.946	8.1
T5B20G	0.112	1.310	11.752	8.160	7.9
T5C20G	0.143	1.745	12.172	13.669	8.0

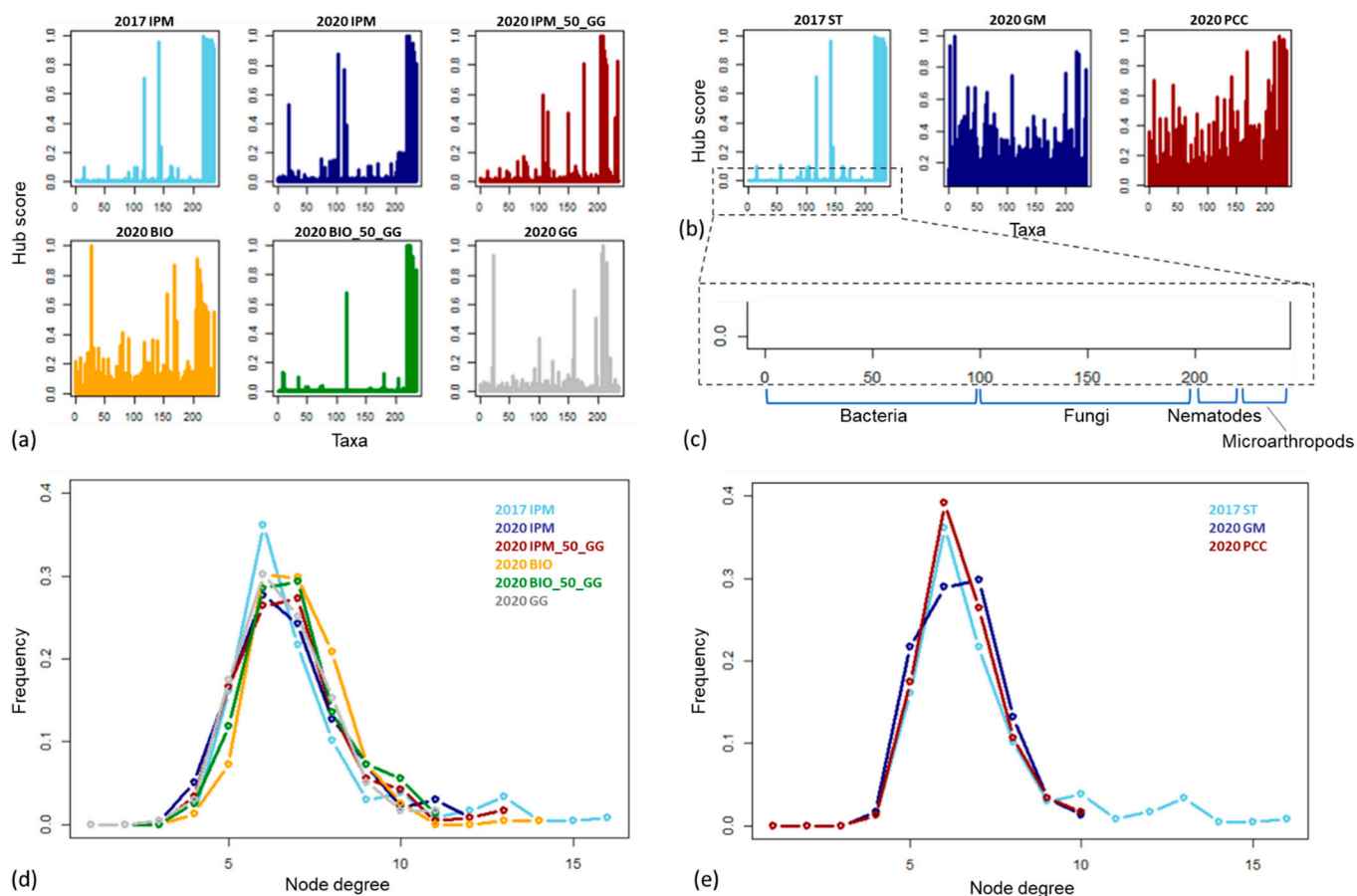


Figure S1. (a,b) Hub scores of each node (taxon) of the networks, obtained grouping the samples on the basis of the phytosanitary treatment (a) or the soil management (b). (c) Zoom of the x axis of the hub scores plots, and annotation of the nodes to the corresponding trophic level. (d,e) Node degree distributions of the treatment (d) and management (e) networks.