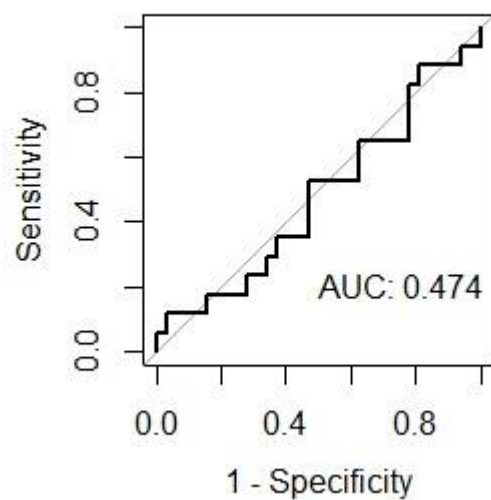


**Epicardial Atrial Fat at Cardiac Magnetic Resonance  
Imaging and AF Recurrence after Transcatheter Ablation**

*Supplementary Material*

**Figure S1.** ROC curve analysis for the absolute LA EAT volume. Finest cut-off identified with the Youden index was 19.2 ml with a sensitivity of 0.12, a specificity of 0.97, positive predictive value of 0.67 and negative predictive value of 0.68.



**Figure S2.** Kaplan-Meier arrhythmia-free survival curves stratified by the absolute LA EAT volume above or below 19.2 ml, showing no statistically significant difference (62% vs 33%; p-value=0.2).

