

Table S1. Correlations between 25 environmental variables in Jeju Island. The correlation coefficients were obtained by Pearson correlation analysis. The statistical significance of the coefficients was tested by t-test, and almost all coefficients were significant at the 0.05 level, but some non-significant coefficients are italicized.

	B01	B02	B03	B04	B05	B06	B07	B08	B09	B10	B11	B12	B13	B14	B15	B16	B17	B18	B19	L01	L02	L03	L04	L05	L06
B01	1.000																								
B02	0.435	1.000																							
B03	0.646	0.900	1.000																						
B04	-0.502	0.205	-0.213	1.000																					
B05	0.994	0.486	0.661	-0.414	1.000																				
B06	0.986	0.298	0.556	-0.604	0.969	1.000																			
B07	-0.139	0.673	0.307	0.842	-0.049	-0.294	1.000																		
B08	0.994	0.483	0.656	-0.407	0.999	0.967	-0.046	1.000																	
B09	0.994	0.372	0.620	-0.587	0.979	0.996	-0.237	0.978	1.000																
B10	0.996	0.471	0.651	-0.428	0.999	0.972	-0.066	0.999	0.982	1.000															
B11	0.995	0.380	0.626	-0.583	0.980	0.995	-0.229	0.979	1.000	0.983	1.000														
B12	-0.863	-0.287	-0.457	0.372	-0.873	-0.871	0.144	-0.867	-0.862	-0.865	-0.859	1.000													
B13	-0.941	-0.367	-0.526	0.362	-0.952	-0.933	0.086	-0.950	-0.930	-0.949	-0.929	0.961	1.000												
B14	-0.747	-0.122	-0.446	0.775	-0.700	-0.791	0.490	-0.694	-0.790	-0.704	-0.788	0.677	0.649	1.000											
B15	-0.686	-0.375	-0.368	-0.031	-0.724	-0.643	-0.201	-0.729	-0.642	-0.723	-0.643	0.659	0.785	0.152	1.000										
B16	-0.887	-0.307	-0.479	0.380	-0.897	-0.892	0.138	-0.891	-0.885	-0.891	-0.883	0.996	0.978	0.669	0.706	1.000									
B17	-0.680	-0.064	-0.379	0.739	-0.638	-0.735	0.505	-0.628	-0.729	-0.637	-0.725	0.747	0.649	0.936	0.104	0.724	1.000								
B18	-0.798	-0.216	-0.427	0.472	-0.795	-0.823	0.254	-0.785	-0.814	-0.787	-0.810	0.973	0.895	0.721	0.531	0.963	0.830	1.000							
B19	-0.678	-0.067	-0.360	0.678	-0.645	-0.732	0.466	-0.634	-0.723	-0.641	-0.718	0.803	0.687	0.900	0.157	0.776	0.987	0.884	1.000						
L01	0.456	0.010	0.189	-0.382	0.442	0.499	-0.307	0.438	0.475	0.439	0.473	-0.392	-0.392	-0.472	-0.175	-0.386	-0.425	-0.370	-0.421	1.000					
L02	0.405	0.490	0.440	0.108	0.443	0.342	0.331	0.439	0.369	0.433	0.370	-0.426	-0.468	-0.008	-0.542	-0.445	-0.039	-0.358	-0.080	-0.118	1.000				
L03	-0.289	-0.104	-0.123	0.088	-0.288	-0.272	-0.014	-0.293	-0.277	-0.293	-0.278	0.258	0.282	0.219	0.193	0.264	0.204	0.240	0.205	-0.026	-0.110	1.000			
L04	0.396	0.060	0.256	-0.440	0.367	0.423	-0.292	0.365	0.417	0.370	0.417	-0.248	-0.280	-0.548	-0.067	-0.257	-0.439	-0.255	-0.401	0.287	-0.326	-0.032	1.000		
L05	-0.740	-0.447	-0.598	0.326	-0.749	-0.723	0.026	-0.742	-0.732	-0.741	-0.732	0.645	0.698	0.509	0.553	0.663	0.452	0.585	0.461	-0.487	-0.594	-0.029	-0.452	1.000	
L06	0.059	0.016	0.040	-0.043	0.057	0.062	-0.029	0.057	0.061	0.058	0.061	-0.075	-0.074	-0.030	-0.075	-0.077	-0.046	-0.072	-0.049	0.047	0.065	0.011	-0.063	-0.074	1.000

B01: annual mean temperature, B02: mean diurnal range, B03: Isothermality, B04: temperature seasonality, B05: max temperature of warmest month, B06: min temperature of coldest month, B07: temperature annual range, B08: mean temperature of wettest quarter, B09: mean temperature of driest quarter, B10: mean temperature of warmest quarter, B11: mean temperature of coldest quarter, B12: annual precipitation, B13: precipitation of wettest month, B14: precipitation of driest month, B15: precipitation seasonality, B16: precipitation of wettest quarter, B17: precipitation of driest quarter, B18: precipitation of warmest quarter, B19: precipitation of coldest quarter, L01: density of barren land, L02: density of artificial grassland, L03: density of natural grassland, L04: density of artificial forest, L05: density of natural forest, L06: density of aquatic area

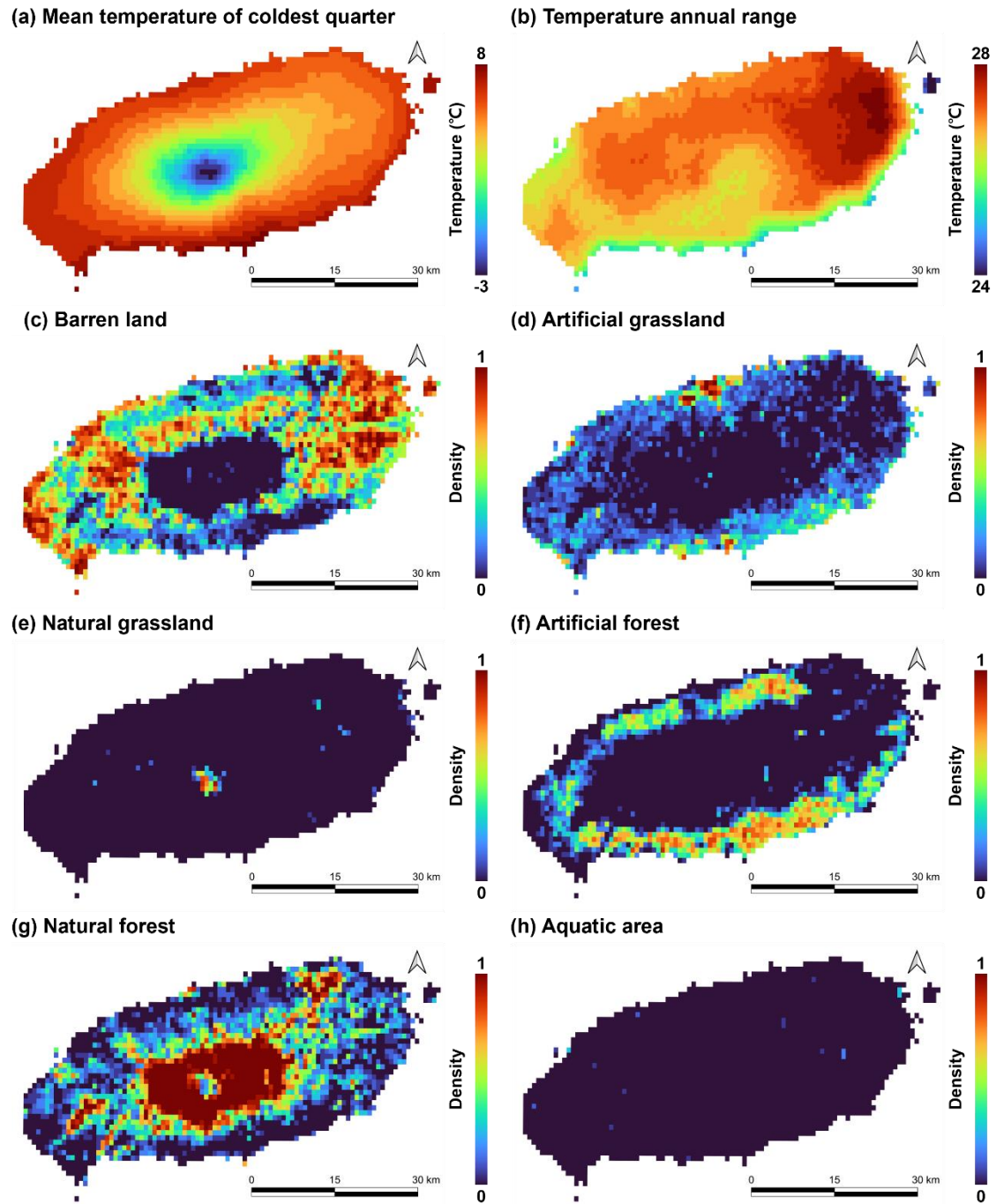


Figure S1. Diversity in environmental factors used in species distribution model for *Taxillus yadoriki* in Jeju Island.