

*Supplementary of*

**Observational evidence of the vertical exchange of  
ozone within the urban planetary boundary layer  
in Shanghai, China**

**Yixuan Gu et al.**

*Correspondence to: Jianming Xu (metxujm@163.com)*

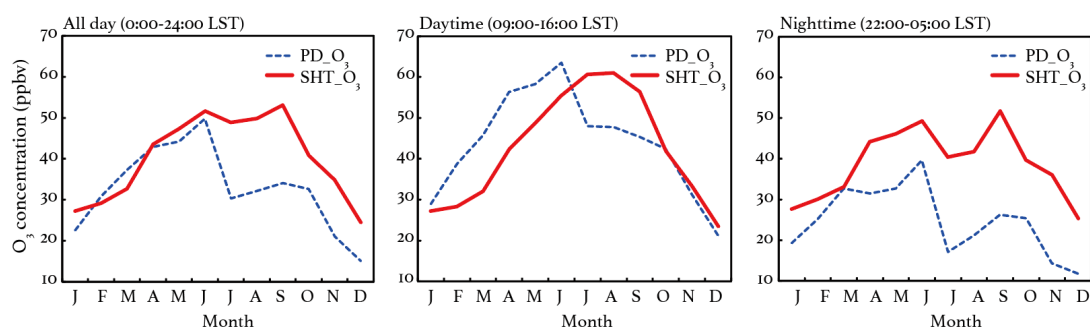


Figure S1. Similar results as Figure 3 but with measurements only during nonrainy periods.

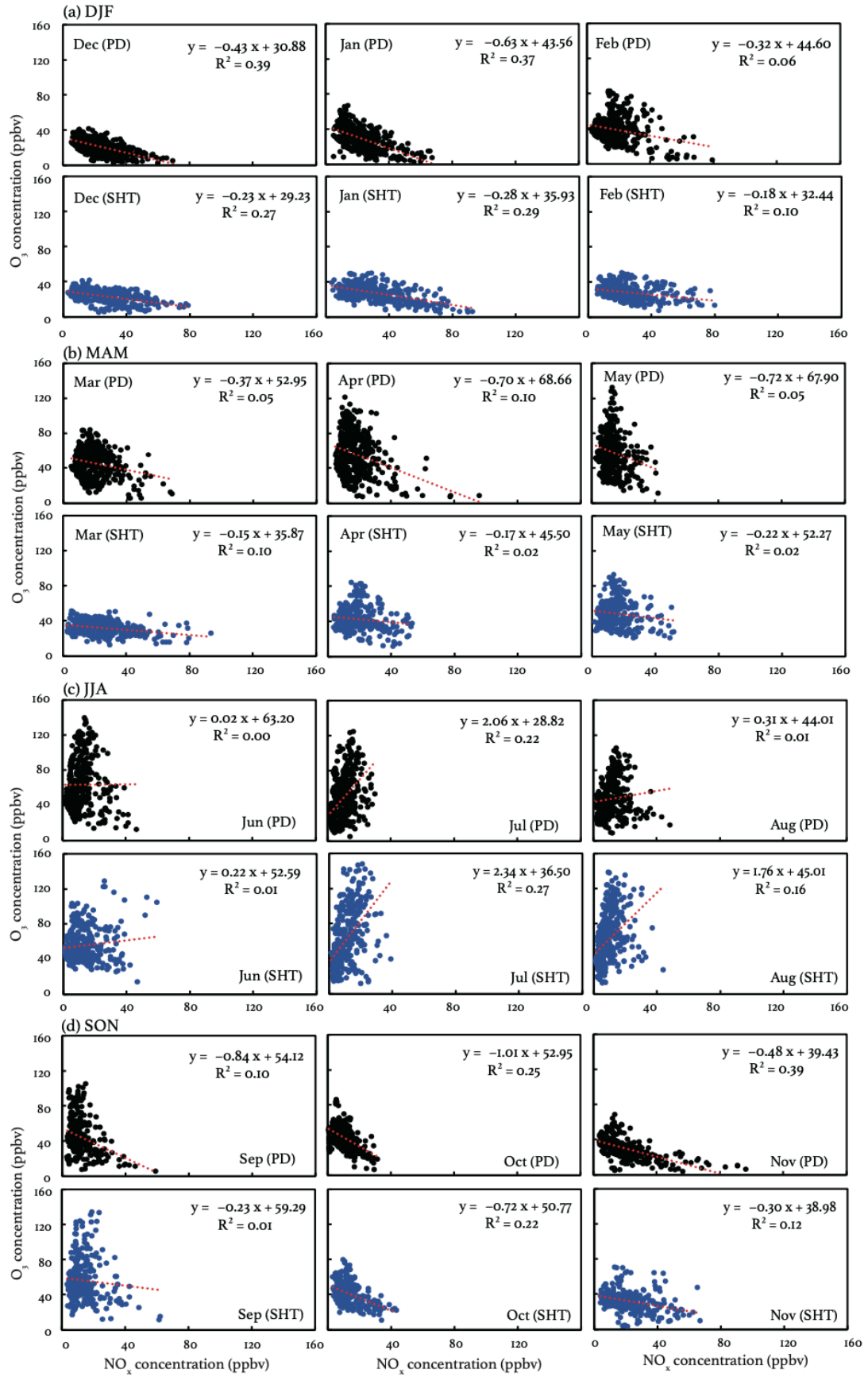


Figure S2. Similar results as Figure 6 but with measurements only during nonrainy periods.