

Figure S1: Chicken PGCs from a representative culture imaged at (A) seeding day, (B) 20 days of culture, and (C) after 50 days of culturing. Scale bar: 50 μm .

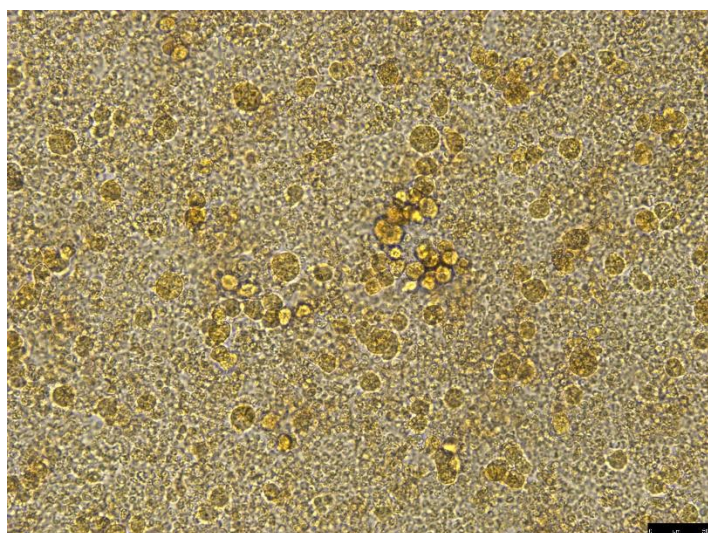


Figure S2: A representative image of the PGCs in culture during the purification process. Scale bar: 50 μm .

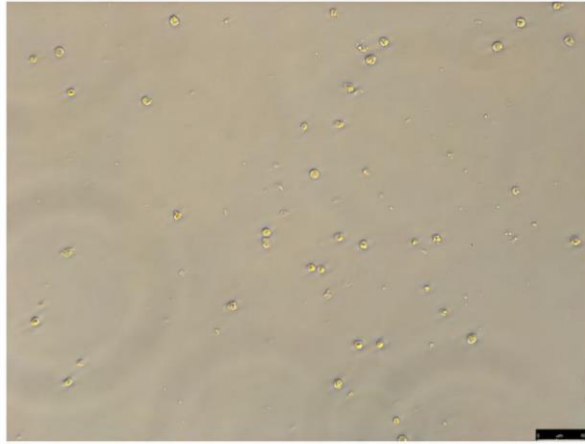


Figure S3: Thawed chicken PGCs after long term cryopreservation. Scale bar: 50 μ m (Leica DMI8).

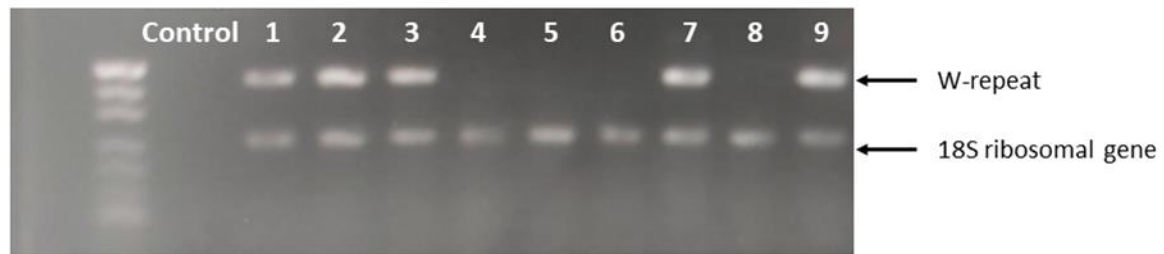


Figure S4: Example of the PCR reactions visualization for sex determination of embryos. In female samples (1, 2, 3, 7 and 9), two bands are observed: one corresponding to the female-specific *Xho*I W-repeat sequence with a product size of 415 base pairs, and the other to the 18S ribosomal gene, which is 256 base pairs in size. In contrast, male embryos (4, 5, 6 and 8) are expected to show only the 18S ribosomal gene sequence.