

Fig. S1 Study flow chart.

Abbreviations: ECG = electrocardiogram; CEA = carotid endarterectomy; CAS = carotid artery stenting; CTA = computed tomography angiogram.

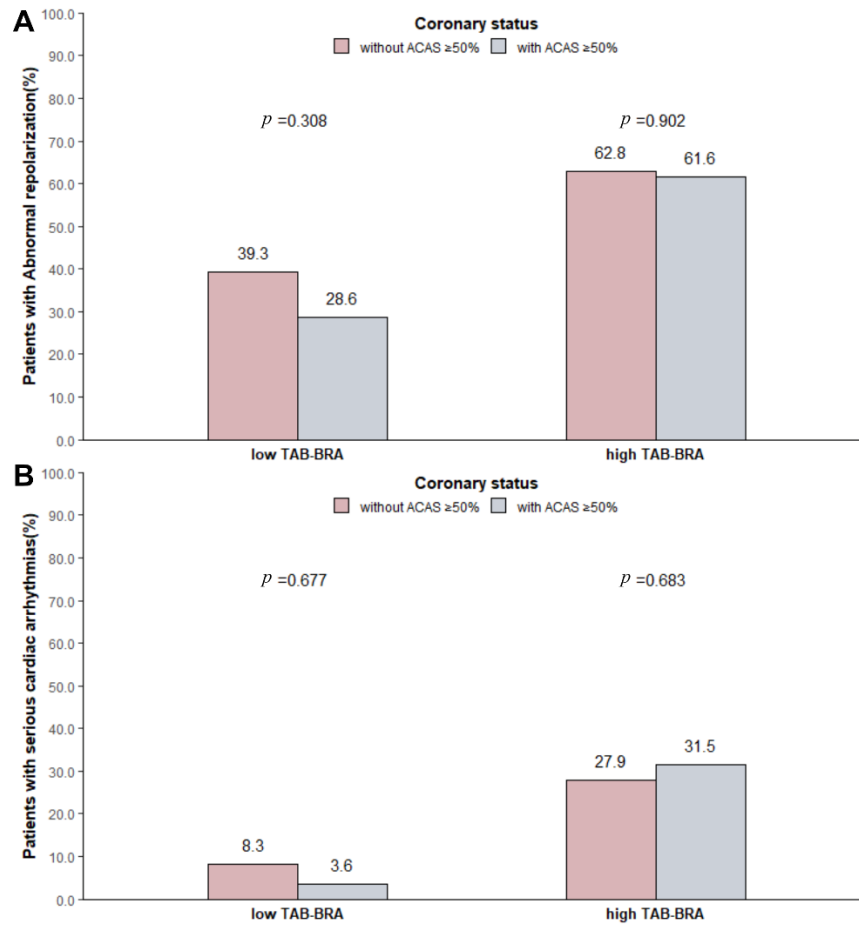


Fig. S2 Comparisons of ECG abnormalities after acute ischemic stroke between patients with ACAS $\geq 50\%$ and without ACAS $\geq 50\%$ in the high TAB-BRA group and low TAB-BRA group.

Abbreviations: ACAS = asymptomatic coronary artery stenosis; SCA = serious cardiac arrhythmias.