

First Survey of the Sponge Community of a Semi-Submerged Marine Cave along the Adriatic Apulian Coast

Antonella Schiavo, Muriel Oddenino, Guadalupe Giménez and Caterina Longo

Figure S1-S9: Images of the Rondinella cave and main sponge spicule complements. The images report the species belonging to the genus *Cliona*, *Phorbas*, and the new records from Apulian marine caves.

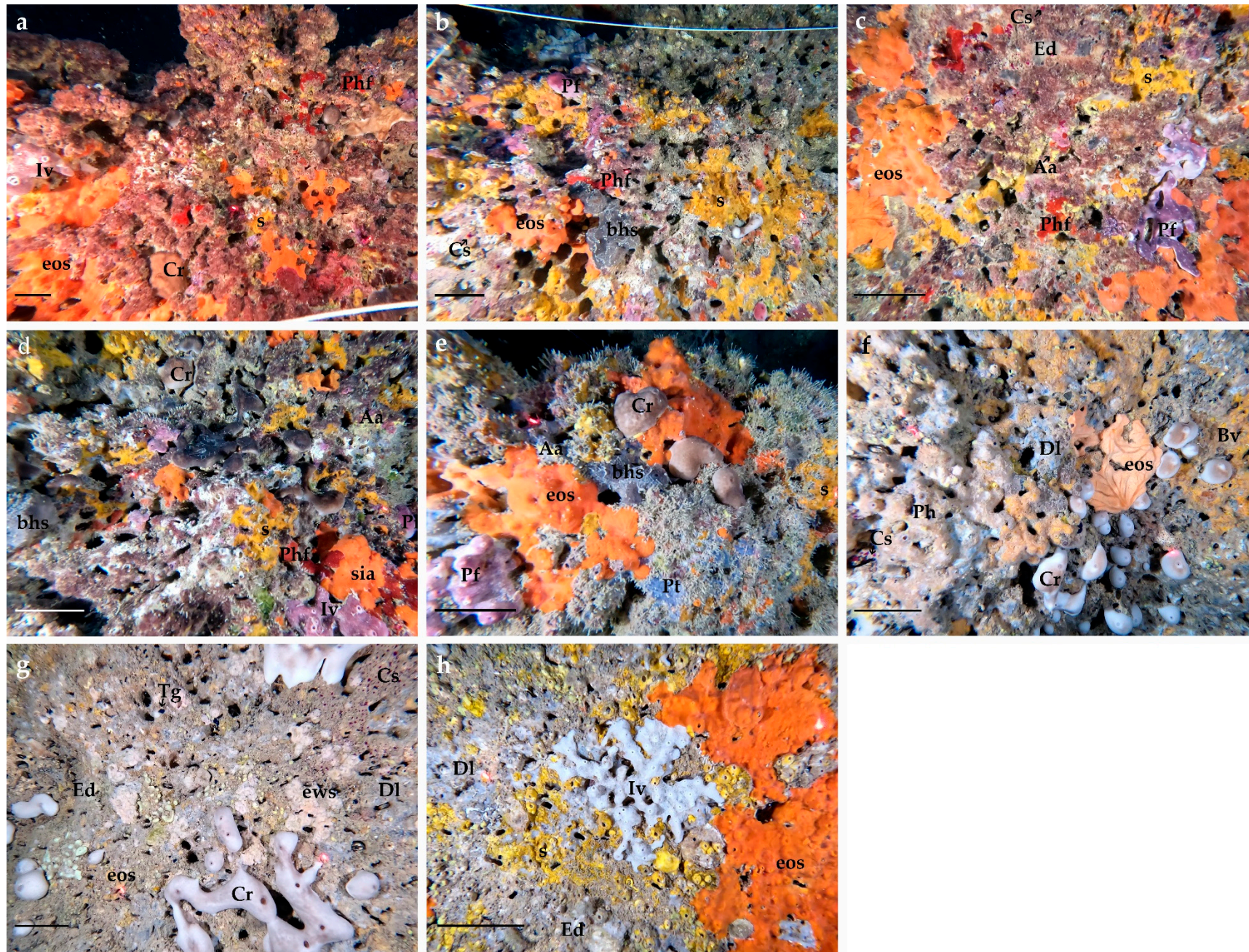


Figure S1. Frames extracted from video transects at stations from 0 metres to 35 metres along the southern wall of the Rondinella Cave; (a) 0 m-frame; (b) 5 m-frame; (c) 10 m-frame; (d) 15 m-frame; (e) 20 m-frame; (f) 25 m-frame; (g) 30-m frame; (h) 35 m-frame; Iv= *Ircinia variabilis*; eos= encrusting orange sponge; Cr= *Chondrosia reniformis*; bhs= black horny sponge; Pf= *Petrosia ficiformis*; Phf= *Phorbac fictitius*; Pt= *Phorbac tenaciior*; Cs= *Cliona schmidtii*; Aa= *Aplysina aerophoba*; s= suberitidae; Ed= *Erylus discophorus*; Dl= *Dendroxia lenis*; Bv= *Bubaris vermiculata*; ews= encrusting white sponge; scale bar= 5 cm.

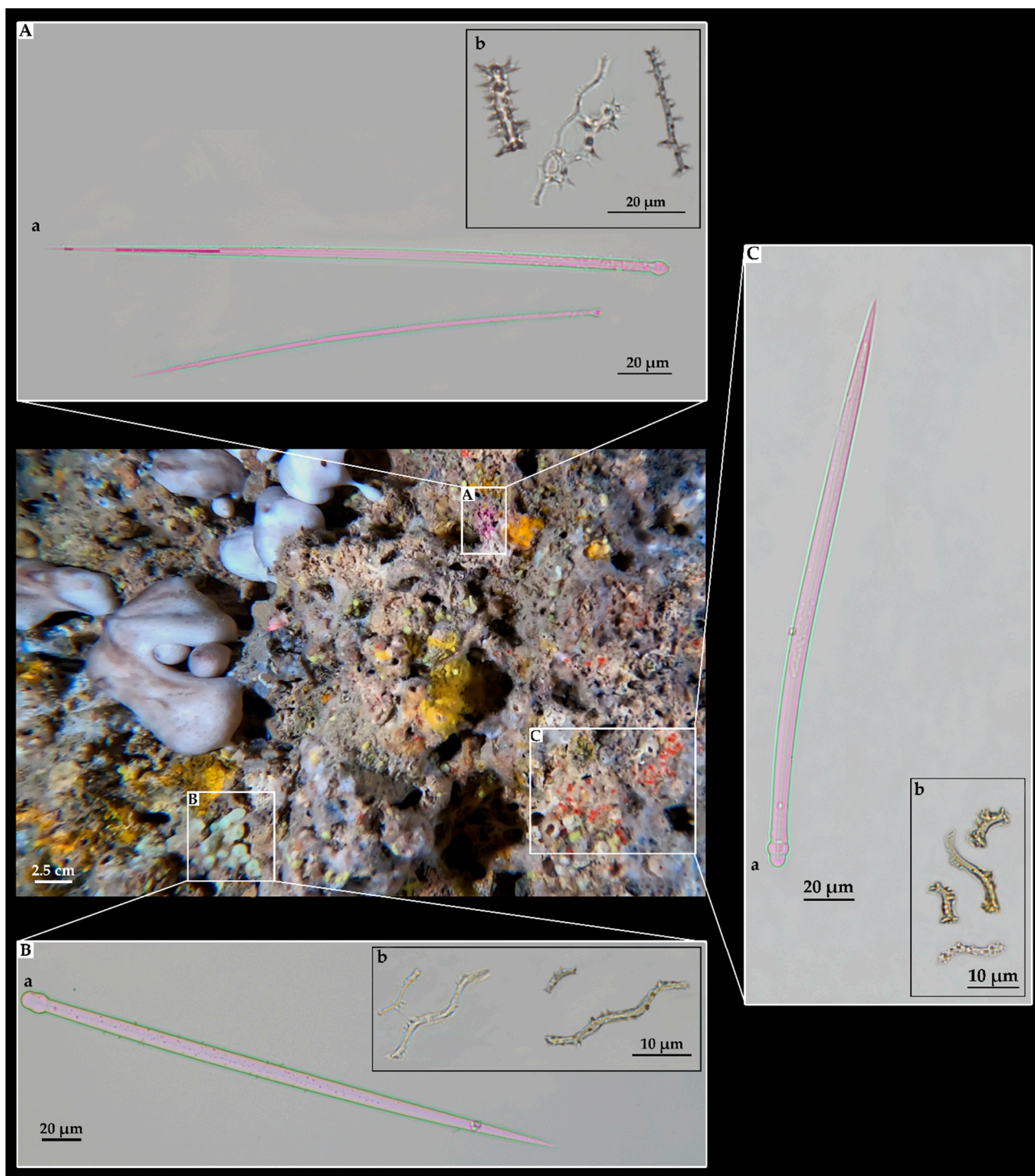


Figure S2. Frame analysed at 25 meters from the entrance. (A) *Cliona schmidtii* (Ridley, 1881); (B) *Cliona viridis* (Schmidt, 1862); (C) *Cliona rhodensis* Rützler & Bromley, 1981; a= tylostyles b= spiraster (and amphiaster in *C. rhodensis*)

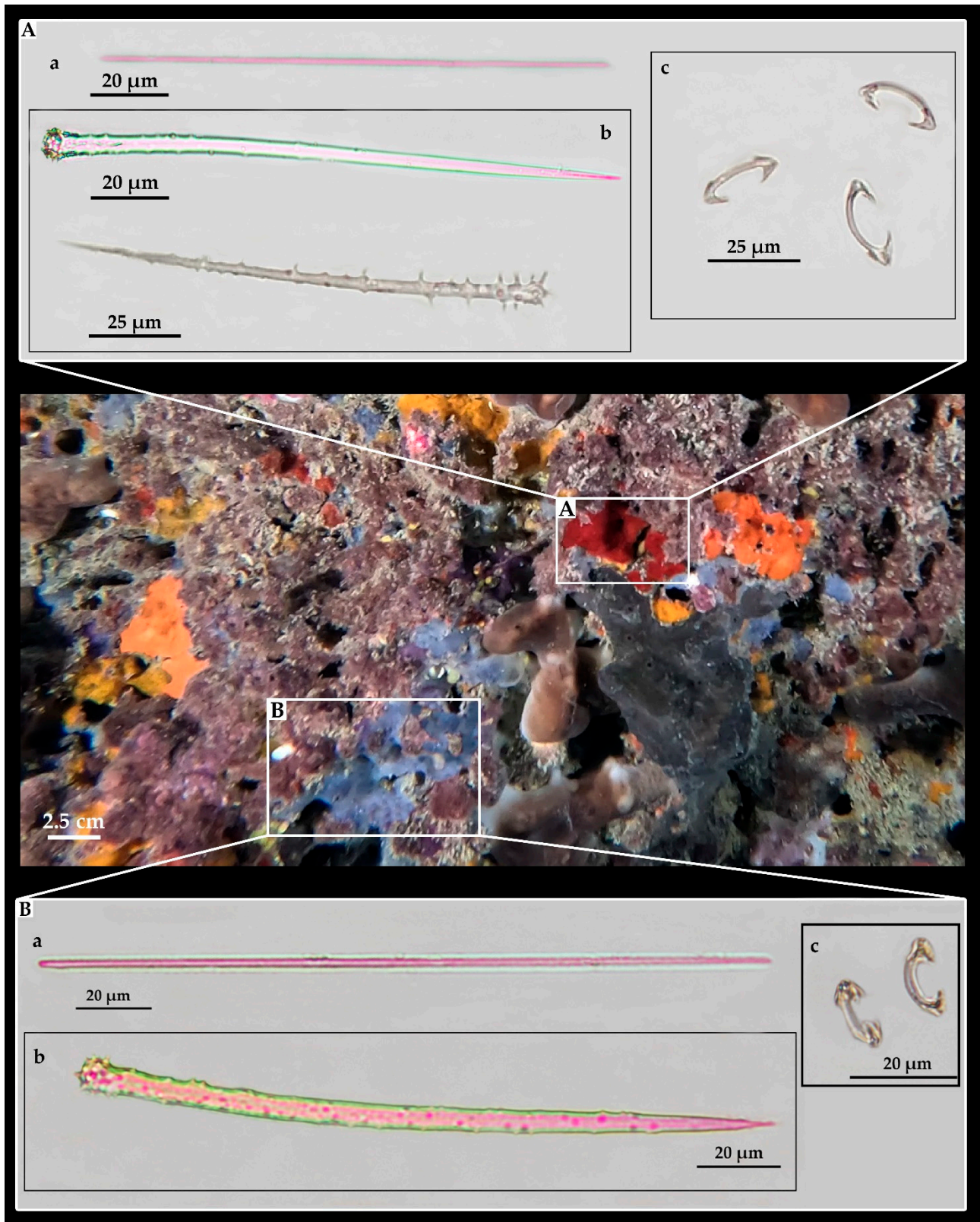


Figure S3. Frame analysed at the 0-meter station of Rondinella cave. (A) *Phorbas fictitius* (Bowerbank, 1866); (B) *Phorbas tenacior* (Topsent, 1925); a= tornote (*P. fictitius*) and strongyle (*P. tenacior*), b= acanthostyles, c= arcuate isochelas.

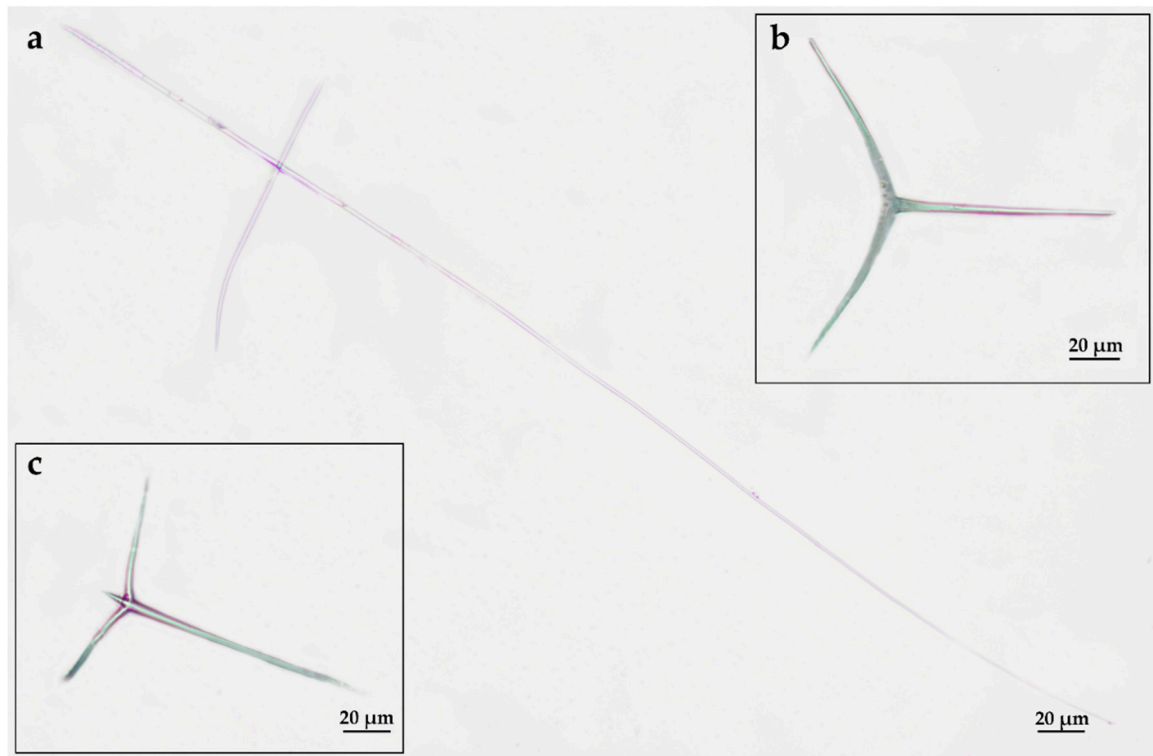


Figure S4. Spicules of *Sycon raphanus* Schmidt, 1862. (a) Small and large diactines; (b) regular triactine; (c) tetractine.

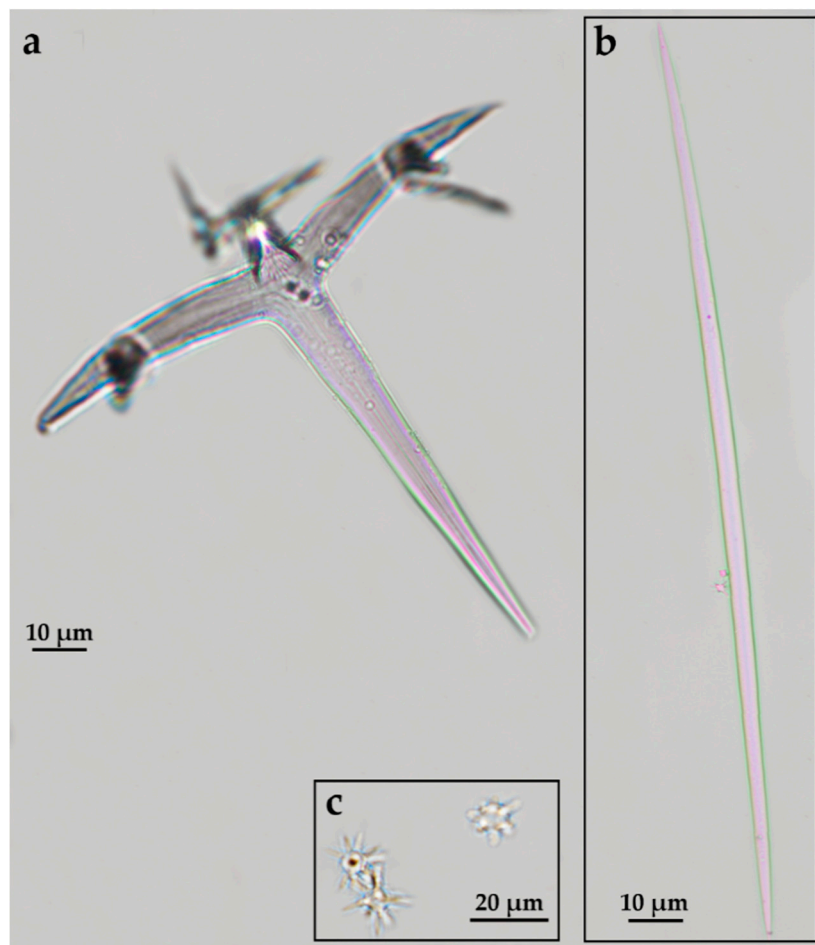


Figure S5. Spicules of *Stelletta lactea* Carter, 1871. (a) Dichotriaenes; (b) oxea; (c) oxyasters and tylaster.

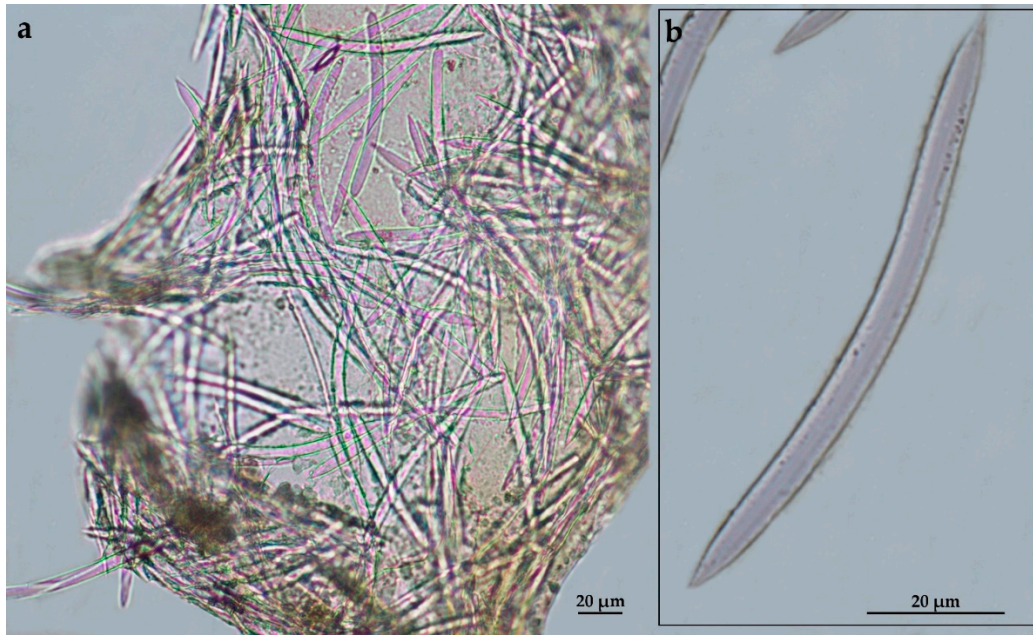


Figure S6. (a) Skeleton of *Siphonodictyon infestum* (Johnson, 1899) with densely-packed oxeads; (b) detail of stout oxea.

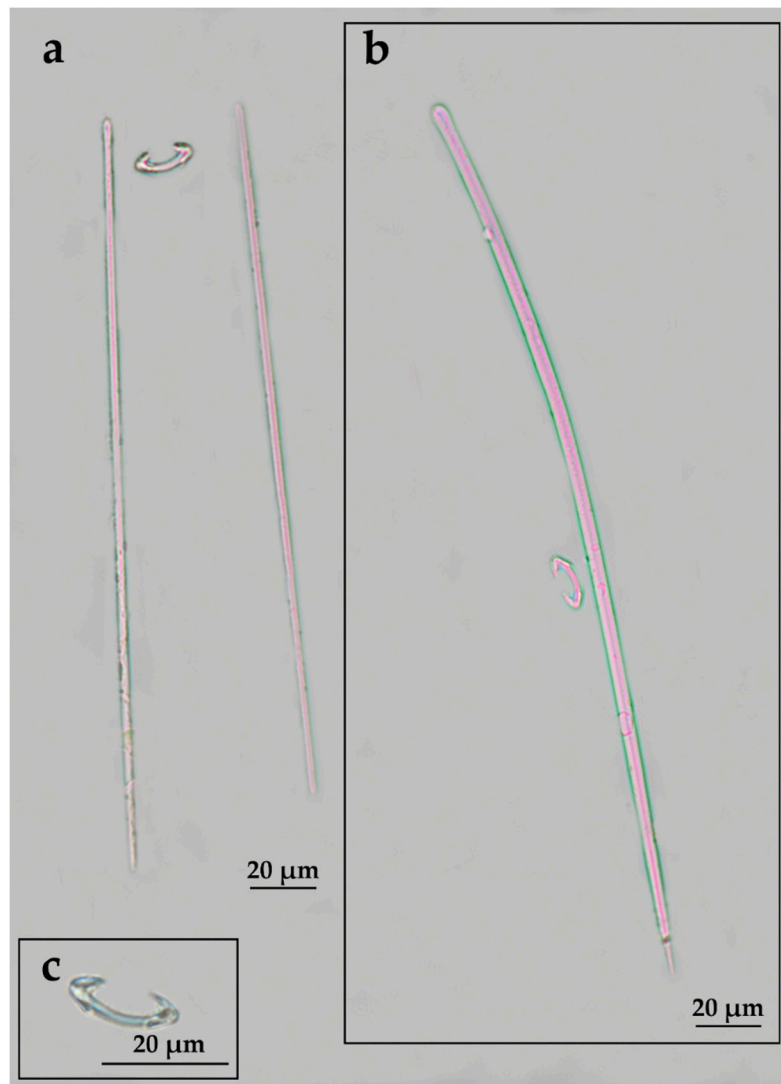


Figure S7. Spicules of *Hamigera hamigera* (Schmidt, 1862). (a) Subtylostrongyles and arcuate isochela; (b) subtylostyles and isochela arcuate; (c) detail of isochela arcuate.

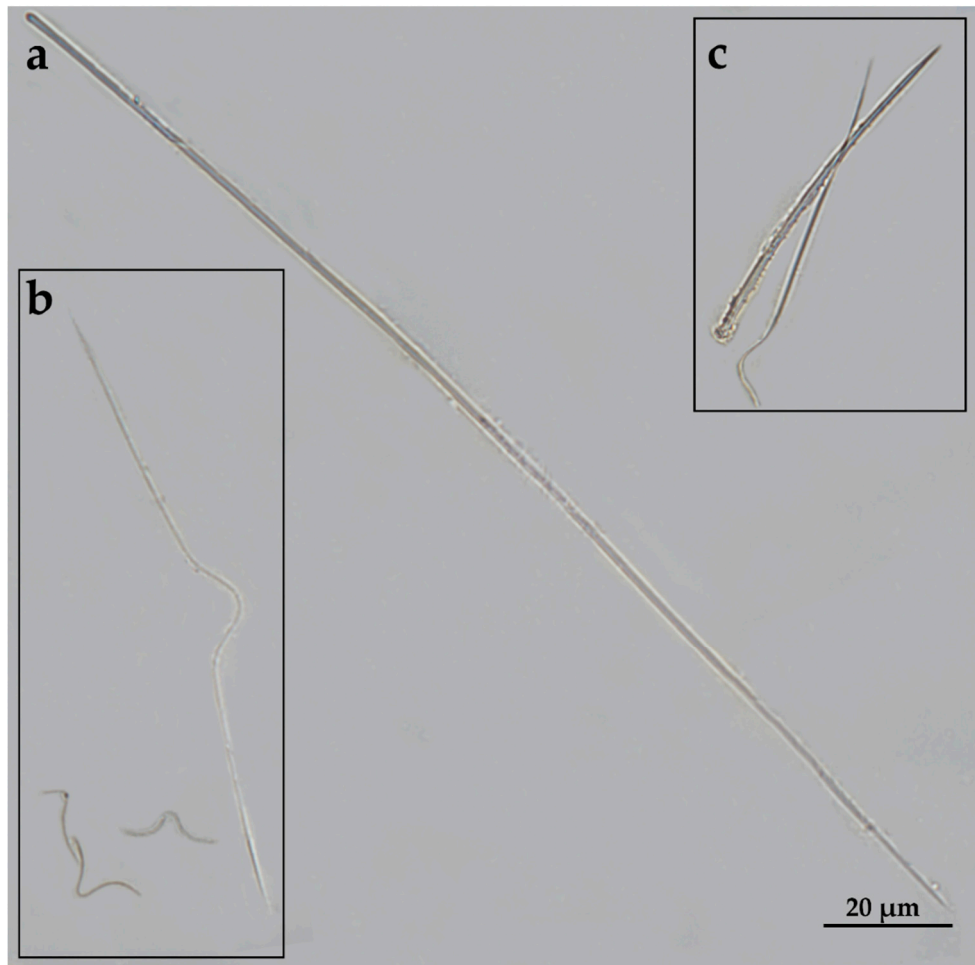


Figure S8. Spicules of *Clathria (Microciona) strepsitoxa* (Hope, 1889). (a) Subtylostyles; (b) toxas; (c) acanthostyle and toxas.

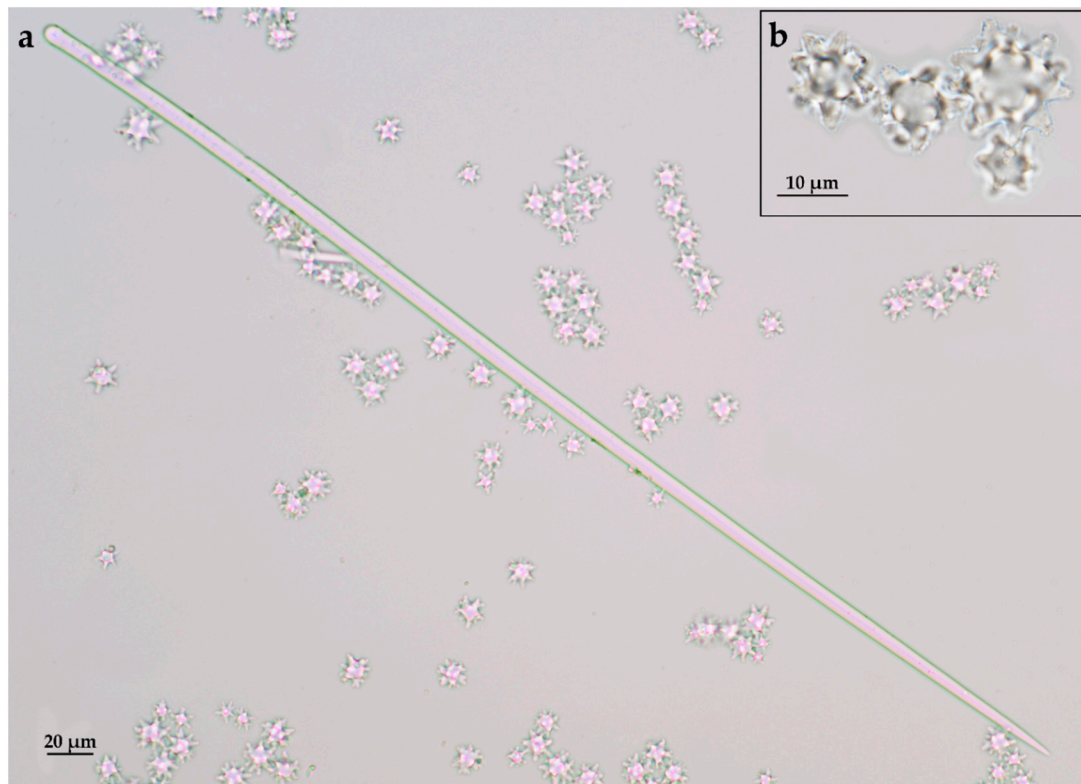


Figure S9. Spicules of *Timea crassa* (Topsent, 1900). (a) Style and strongylaster; (b) details of strongylaster.