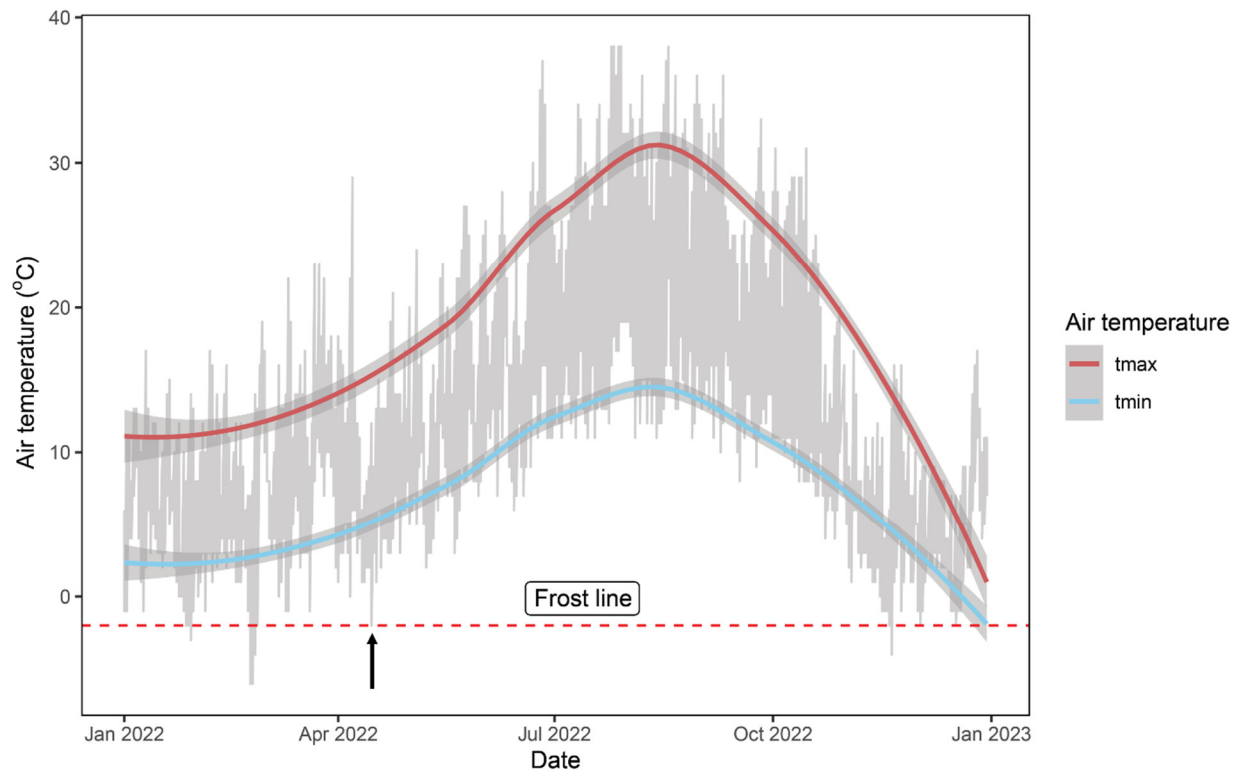


Supplementary Data



SUPPLEMENTARY FIGURE S1. Average daily maximum (tmax) and minimum (tmin) air temperatures during 2022. The grey shaded area indicates the daily temperature ranges throughout the year. The black arrow indicates the frost event that initiated the study. “Frost line” is drawn at -2 °C according to Barlow, 2010*.

*Barlow, S. (2010). Improved frost management in the Goulburn & Yarra Valleys. Final report to Grape and Wine Research and Development Corporation, Project Number RT 06/04-1. *University of Melbourne: Melbourne, Victoria, Australia.*



SUPPLEMENTARY FIGURE S2. Injury to the experimental vines recorded after the April 15th, 2022, frost event.

SUPPLEMENTARY TABLE S1. Pearson's correlation (*r*) between yield and berry composition parameters. Variables with significant correlation (*p* < 0.05) are shown.

Variable 1	Variable 2	<i>r</i>	<i>p</i> -value
Cluster weight	Berries/cluster	0.88	<0.0001
Clusters/vine	Berries/cluster	-0.76	<0.0001
Clusters/vine	Cluster weight	-0.71	0.0001
Yield	Clusters/vine	0.49	0.017
Berry weight	Yield	0.47	0.022
pH	TA	-0.42	0.049
TSS	Yield	-0.21	0.342