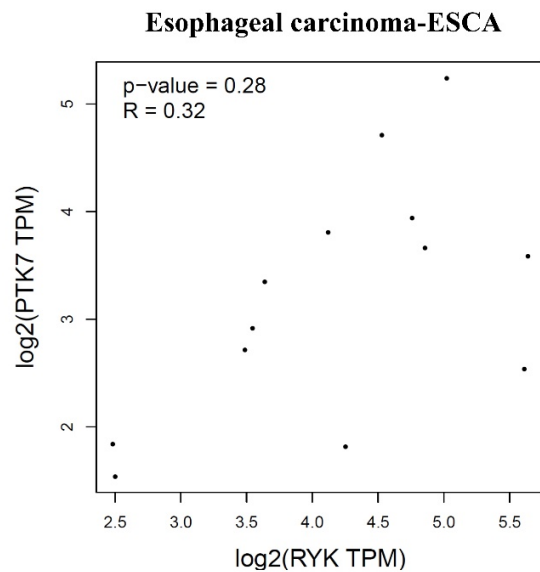
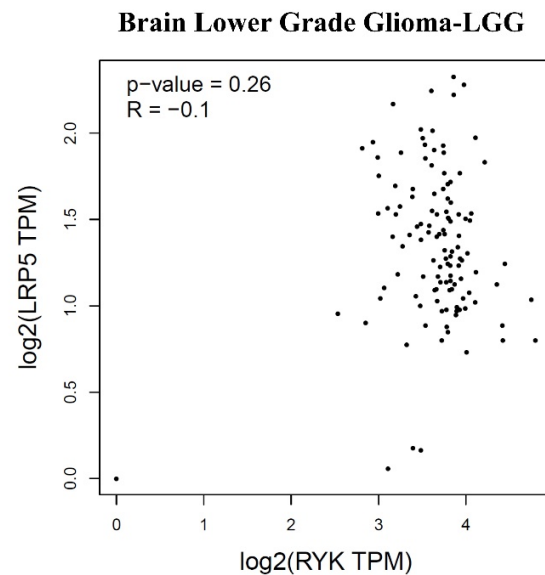
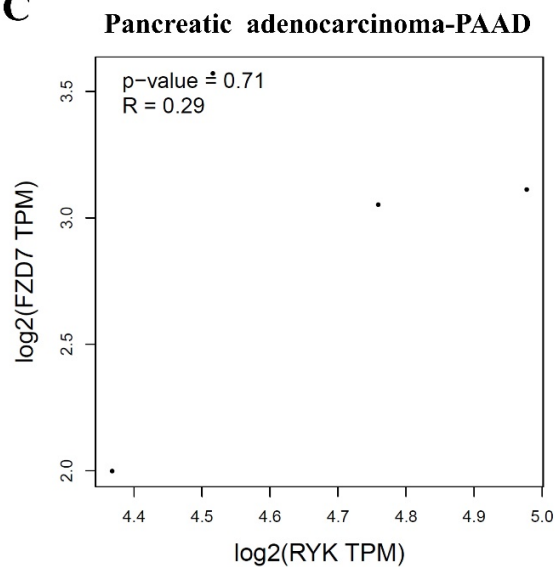


A**B****C**

Supplementary Figure S1. Correlation between RYK and WNT pathway receptors in cancer using TCGA data. The correlation diagram illustrates the association between the expression of select WNT receptors and the RYK coreceptor. The data is presented as Transcripts Per Million normalized and log-transformed to base 2 (TPM Log2 Expression Spearman correlation coefficient (R) indicating the strength of the correlation. Panels include (A) Protein tyrosine kinase 7 (PTK7), (B) LDL receptor-related protein 5 (LRP5), and (C) Frizzled class receptor 7 (FZD7).