

Anti-inflammatory activities of Pentaherbs formula and its influences on gut microbiota in allergic asthma

Miranda Sin-Man Tsang¹, Sau Wan Cheng¹, Jing Zhu², Karam Atli², Ben Chung Lap Chan¹, Dehua Liu¹, Helen Yau-Tsz Chan², Xiaoyu Sun², Ida Miu-Ting Chu², Kam-Lun Hon³, Christopher Wai-Kei Lam⁴, Pang-Chui Shaw^{1,5,6}, Ping Chung Leung¹, Chun-Kwok Wong^{1,2,6*}

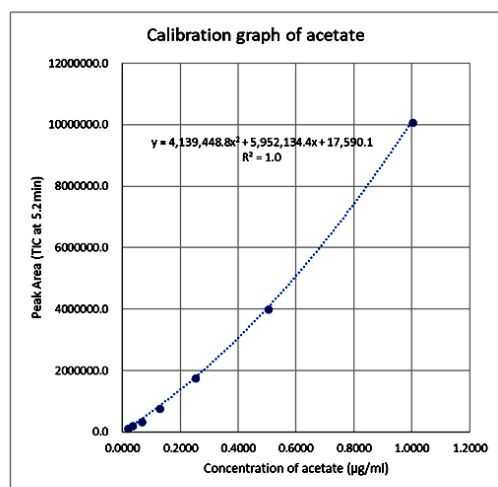
¹Institute of Chinese Medicine and State Key Laboratory of Phytochemistry and Plant Resources in West China, The Chinese University of Hong Kong, Hong Kong; ²Department of Chemical Pathology, The Chinese University of Hong Kong, Prince of Wales Hospital, Hong Kong; ³Department of Paediatrics, The Chinese University of Hong Kong, Prince of Wales Hospital, Hong Kong; ⁴State Key Laboratory of Quality Research in Chinese Medicines, Macau Institute for Applied Research in Medicine and Health, Macau University of Science and Technology, Macau; ⁵School of Life Sciences, The Chinese University of Hong Kong, Hong Kong; ⁶Li Dak Sum Yip Yio Chin R & D Centre for Chinese Medicine, The Chinese University of Hong Kong, Hong Kong.

Running title: Microbiota in allergic asthma

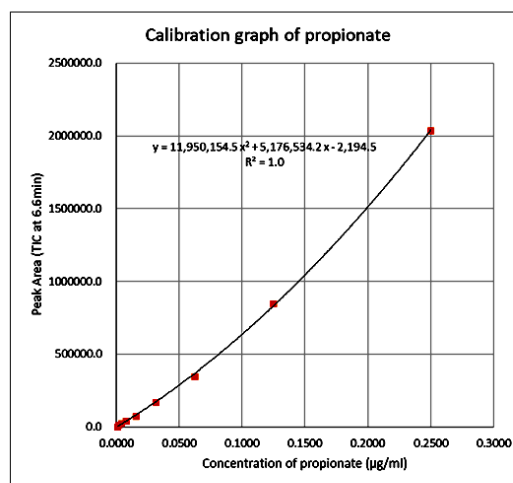
*Correspondence: Professor Chun Kwok Wong, Department of Chemical Pathology, The Chinese University of Hong Kong, Prince of Wales Hospital, Shatin, N.T., Hong Kong. Tel: (852) 3505 2964, Fax: (852) 2636 5090, E-Mail: ck-wong@cuhk.edu.hk

Supplementary Fig. S1

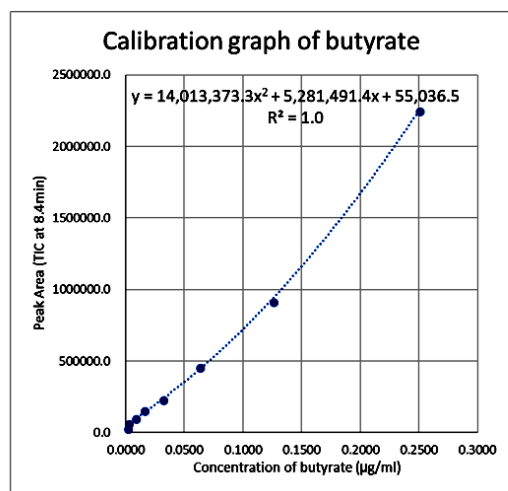
(A)



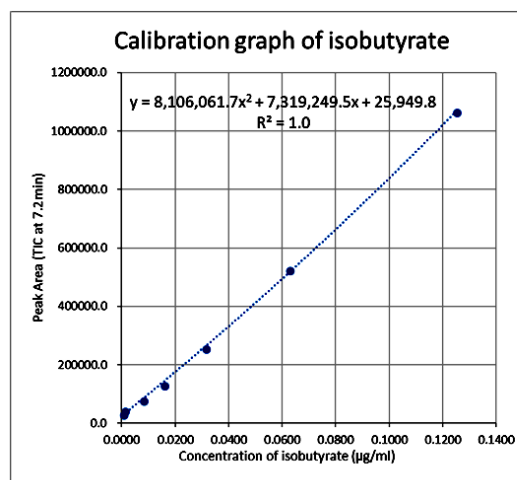
(B)



(C)

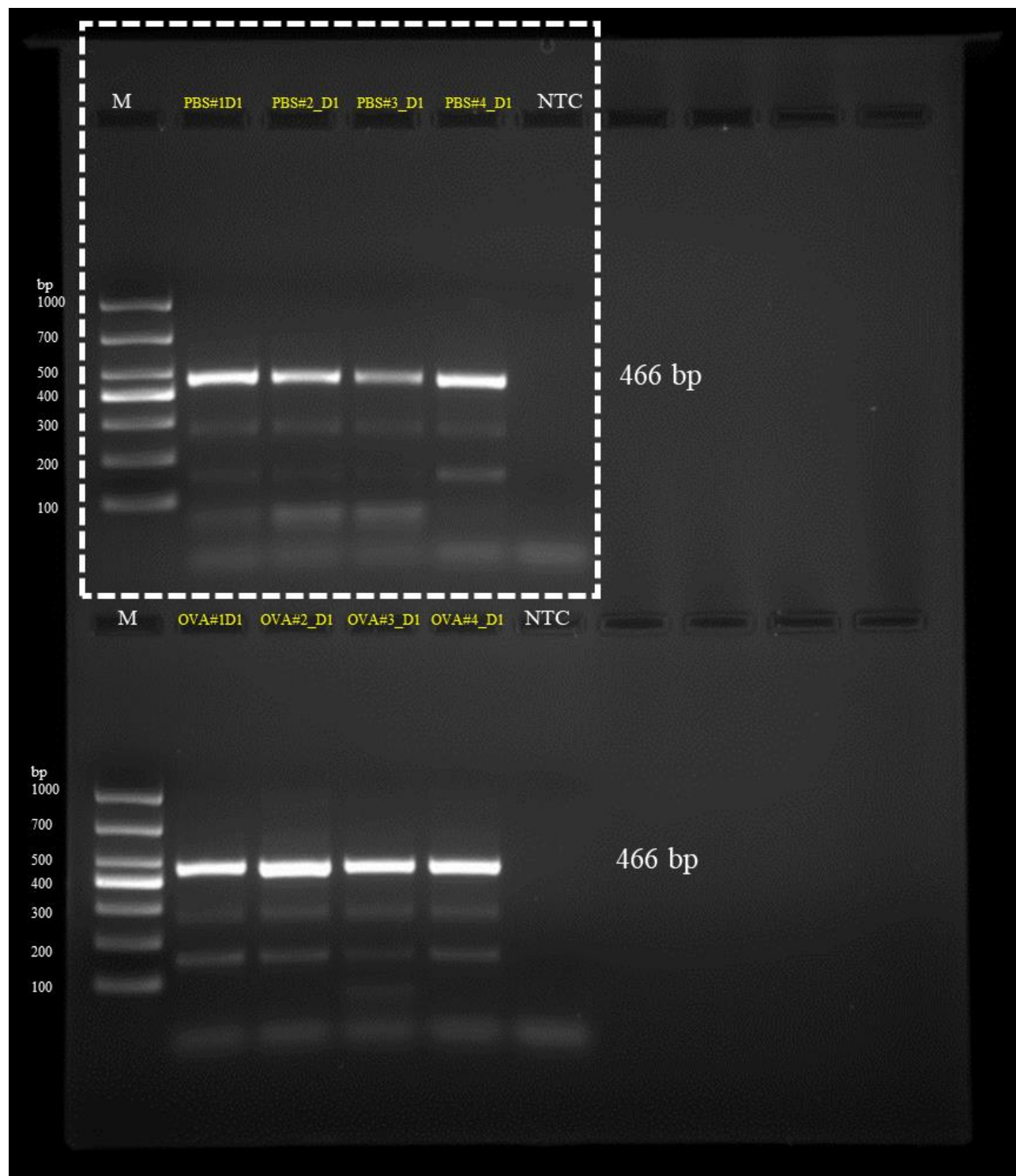


(D)



Supplementary Fig. S1. Calibration curve of each SCFA standard. Peaks of (A) acetate, (B) propionate, (C) butyrate and (D) isobutyrate were identified according to the mass spectra and retention times, which were 5.2, 7.6, 8.5 and 7.2 minutes, respectively. Concentration of each SCFA in the stool sample was calculated from the calibration curves.

Supplementary Fig. S2



Supplementary Fig. S2. Full-length gel of Figure 3A showing the quality of 16S rRNA gene (V3-V4) extracted and amplified from the stool samples of the mice. The white dotted lines delineate the cropped region of the gel. M, DNA ladder DL1000; NTC, negative control; PBS, healthy control; OVA, OVA-induced allergic asthmatic control; D1, day 1.