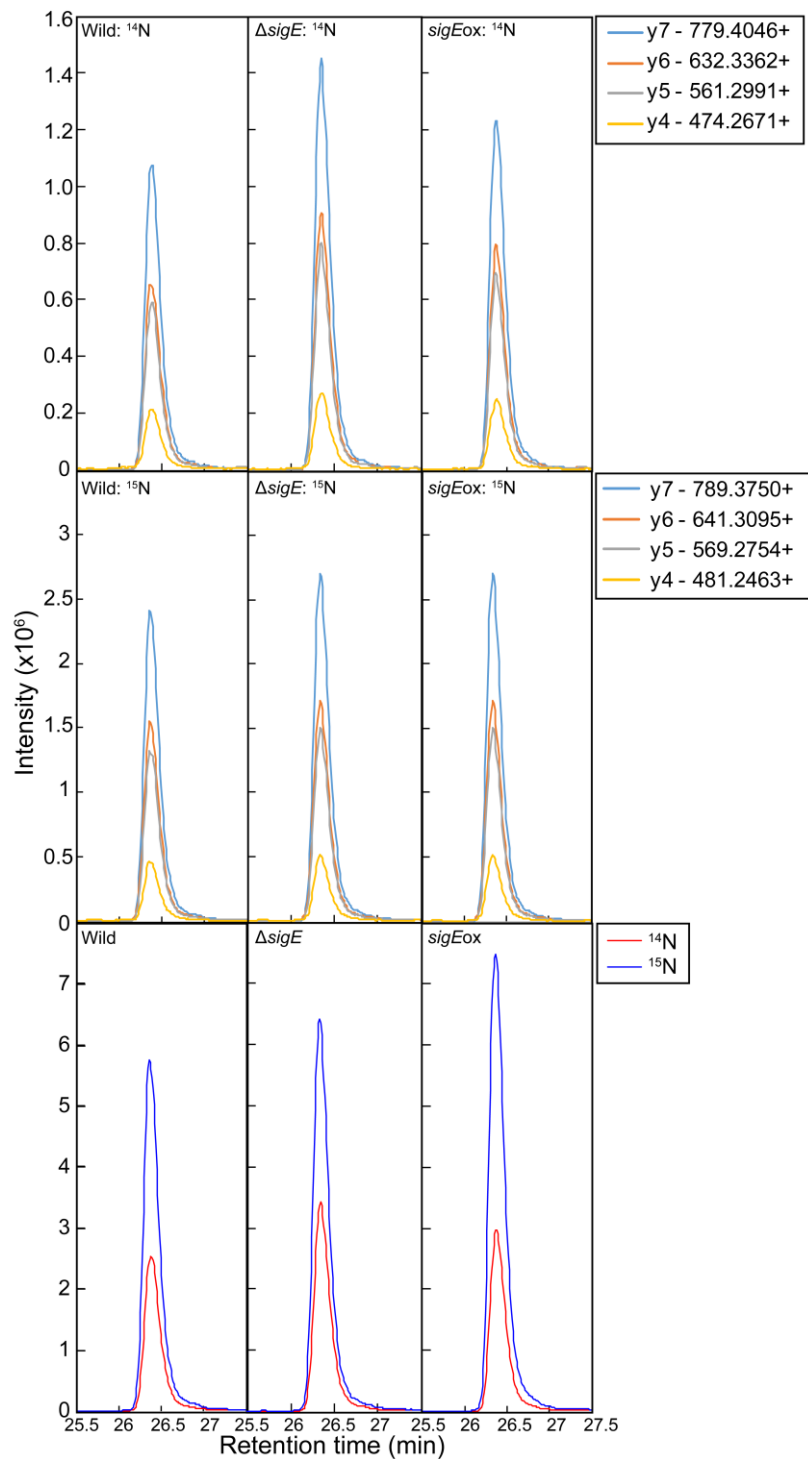
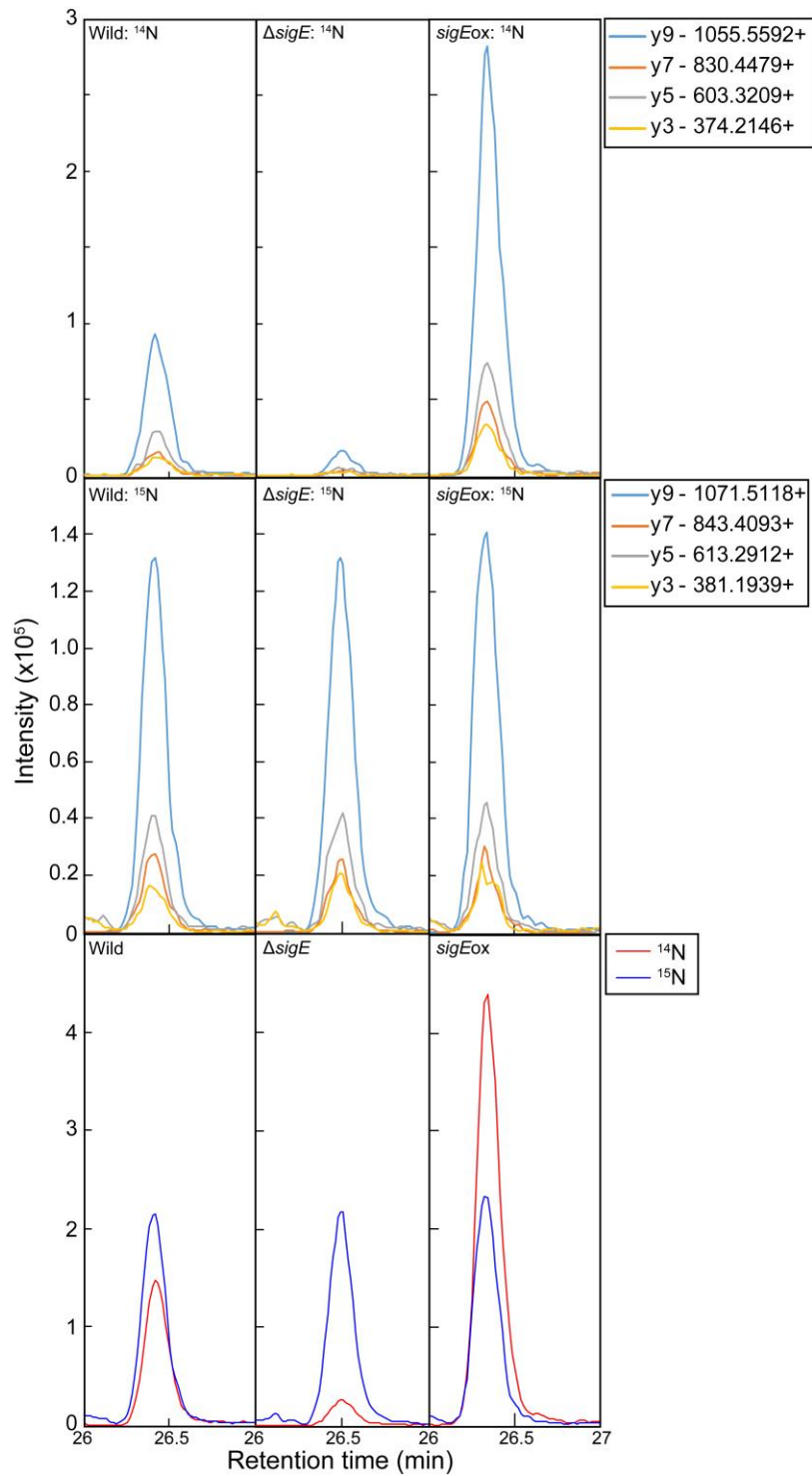


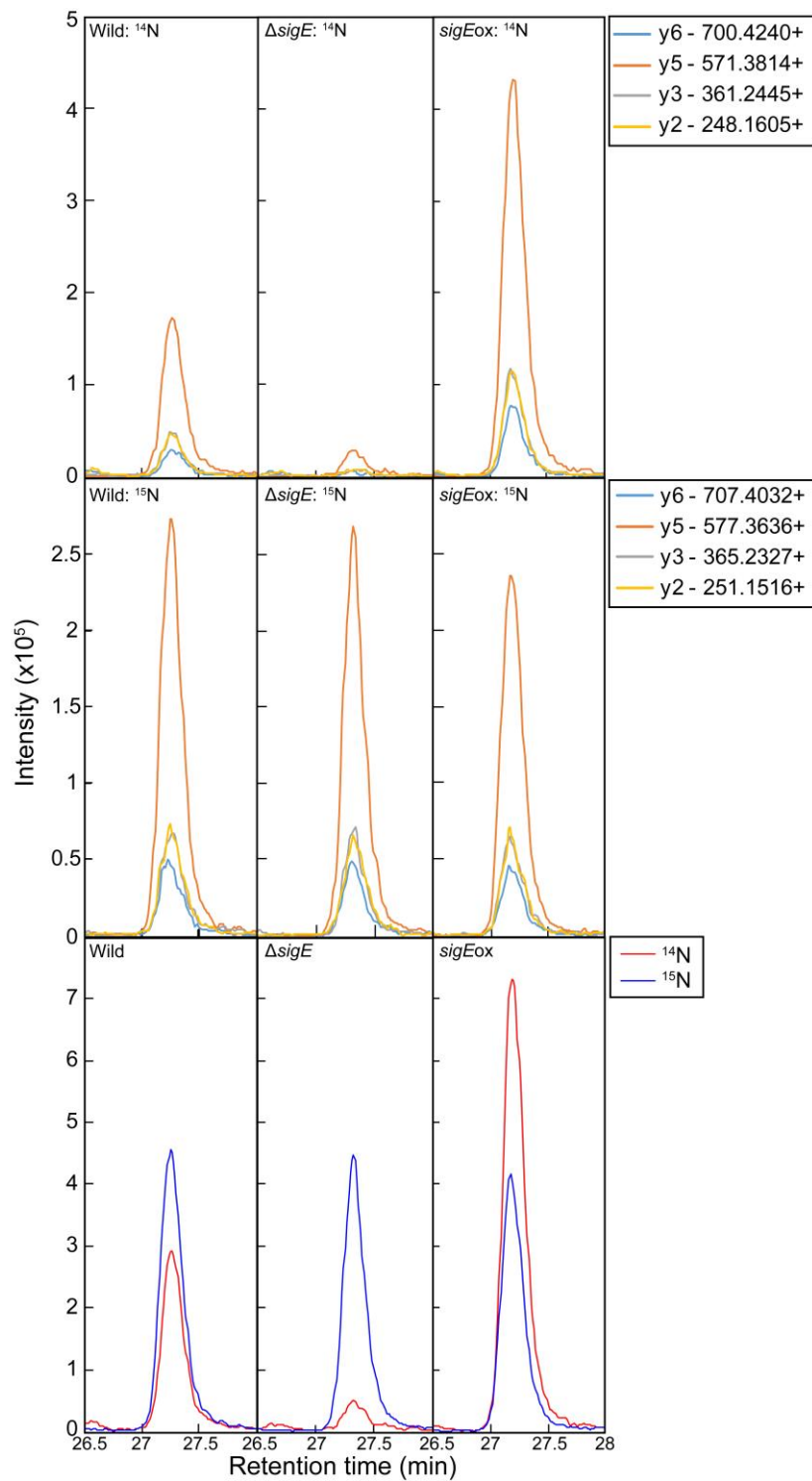
**Figure S1** SRM spectra of the peptide EVTASLVGADAGK (ApcB). (Top) Transition spectra of  $^{14}\text{N}$  peptide sample. (Middle) Transition spectra of  $^{15}\text{N}$ -labeled peptide sample. (Bottom)  $^{15}\text{N}$ -labeled peptide and  $^{14}\text{N}$  peptide spectra.



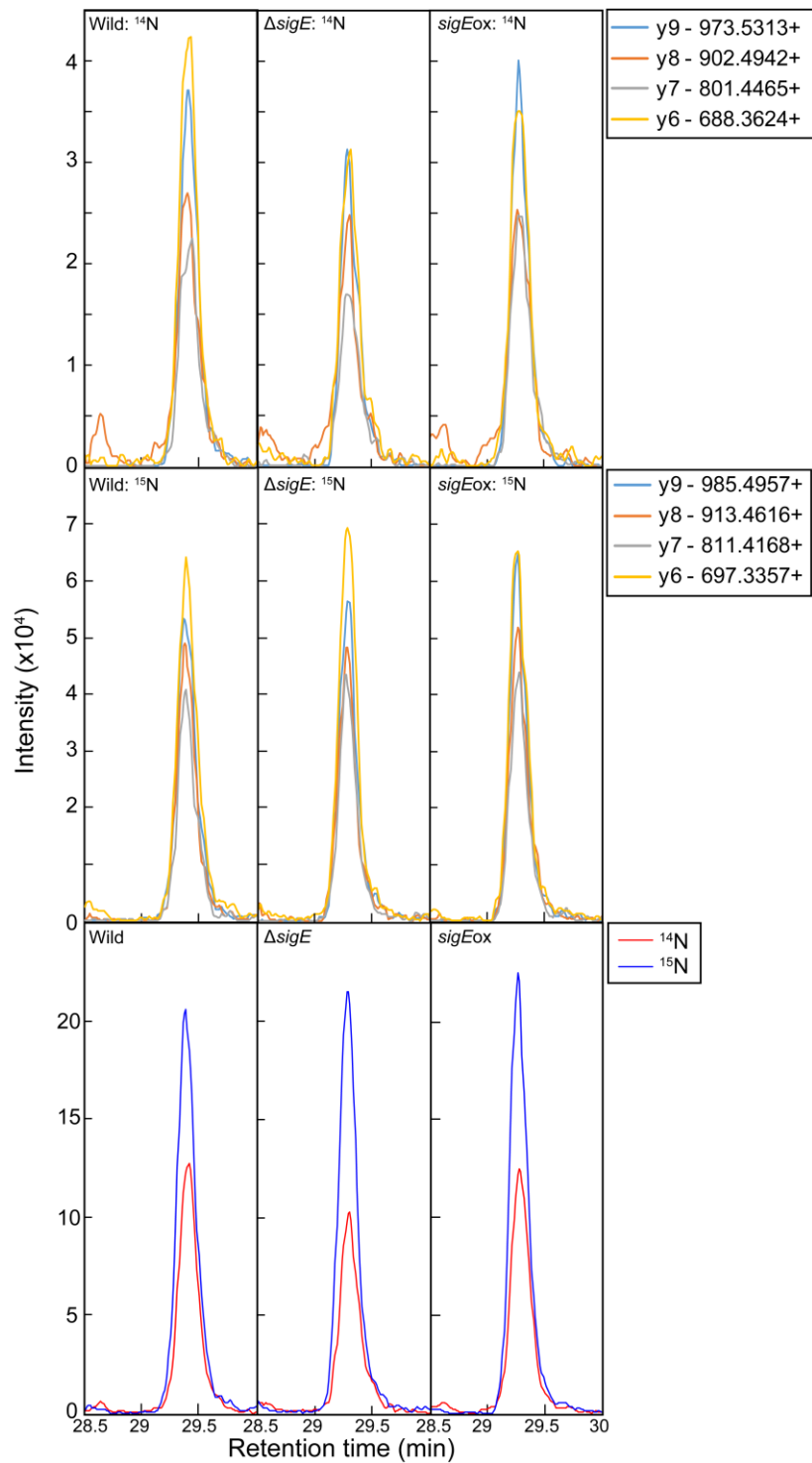
**Figure S2** SRM spectra of the peptide SYFASGELR (ApcB). (Top) Transition spectra of  $^{14}\text{N}$  peptide sample. (Middle) Transition spectra of  $^{15}\text{N}$ -labeled peptide sample. (Bottom)  $^{15}\text{N}$ -labeled peptide and  $^{14}\text{N}$  peptide spectra.



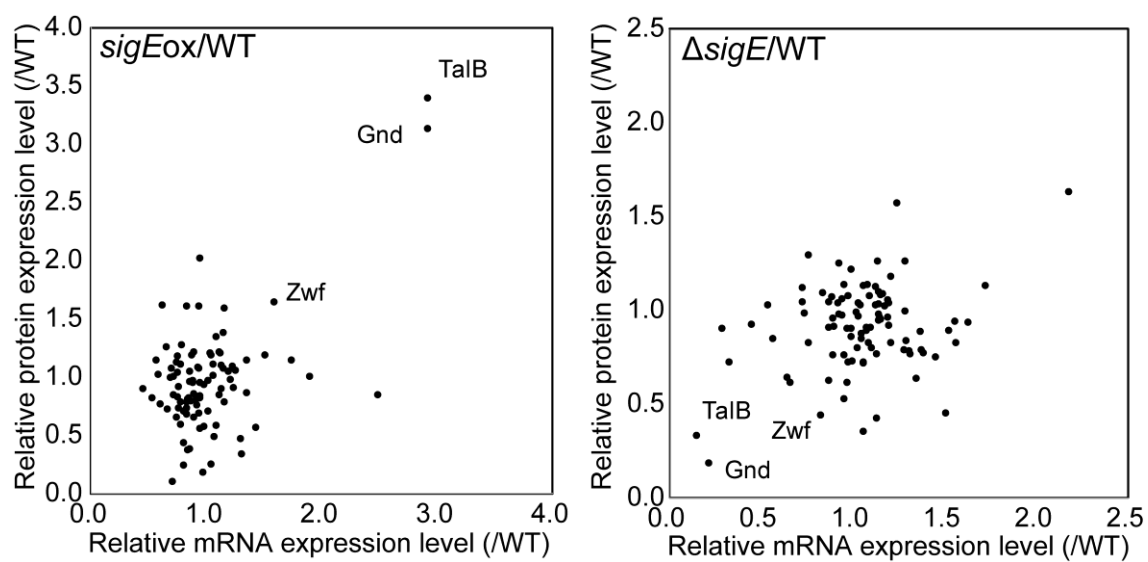
**Figure S3** SRM spectra of the peptide AVL PQNLTQAQR (Gnd). (Top) Transition spectra of  $^{14}N$  peptide sample. (Middle) Transition spectra of  $^{15}N$ -labeled peptide sample. (Bottom)  $^{15}N$ -labeled peptide and  $^{14}N$  peptide spectra.



**Figure S4** SRM spectra of the peptide ELEPILTK (Gnd). (Top) Transition spectra of  $^{14}\text{N}$  peptide sample. (Middle) Transition spectra of  $^{15}\text{N}$ -labeled peptide sample. (Bottom)  $^{15}\text{N}$ -labeled peptide and  $^{14}\text{N}$  peptide spectra.



**Figure S5** SRM spectra of the peptide VPATIEEIAAR (Eno). (Top) Transition spectra of  $^{14}\text{N}$  peptide sample. (Middle) Transition spectra of  $^{15}\text{N}$ -labeled peptide sample. (Bottom)  $^{15}\text{N}$ -labeled peptide and  $^{14}\text{N}$  peptide spectra.



**Figure S6** Comparison with the relative abundances of mRNAs and proteins