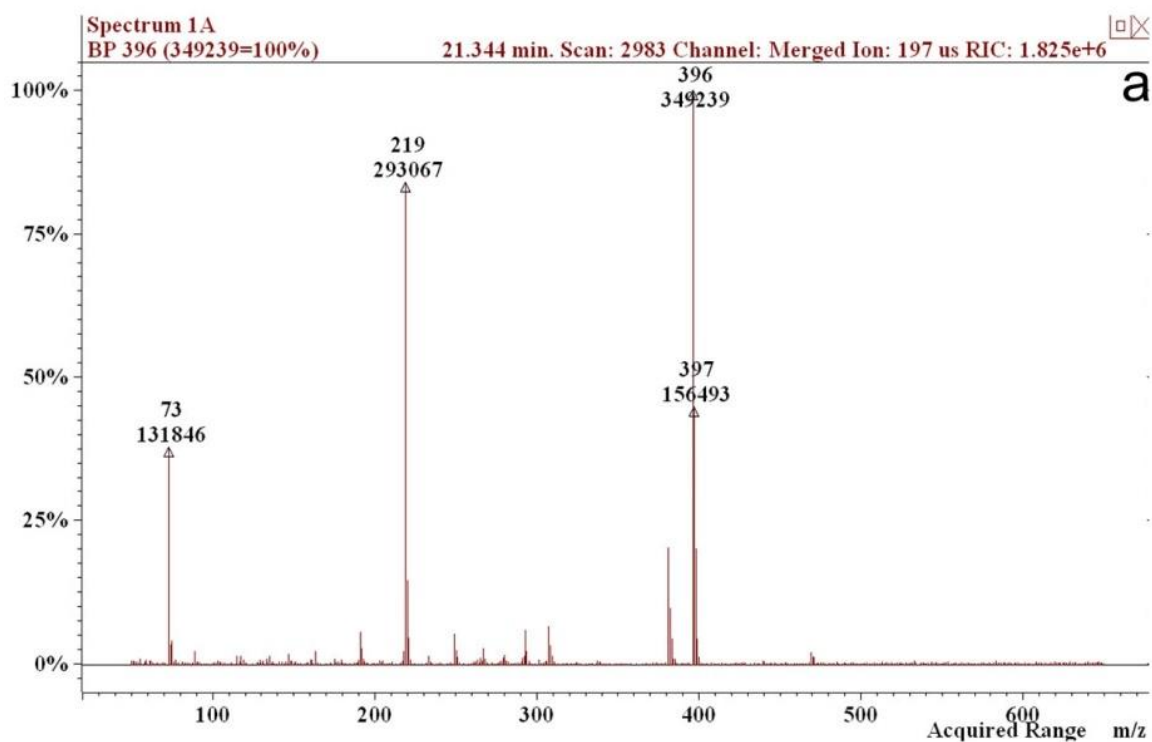
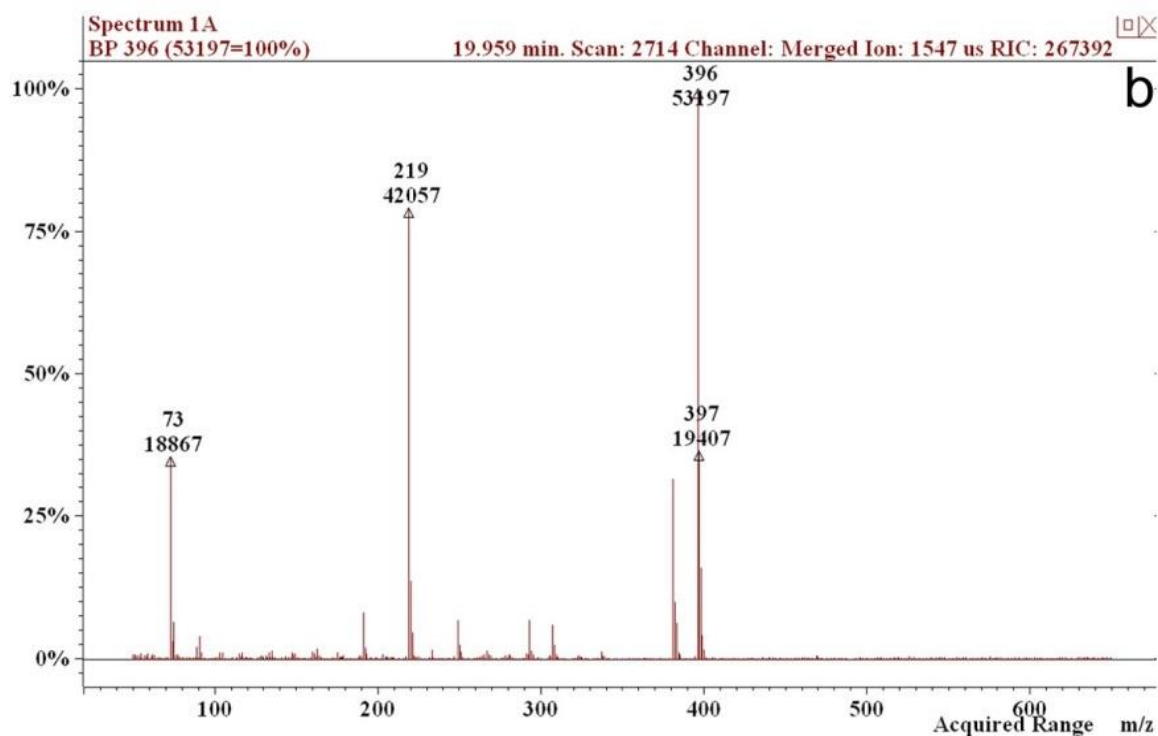
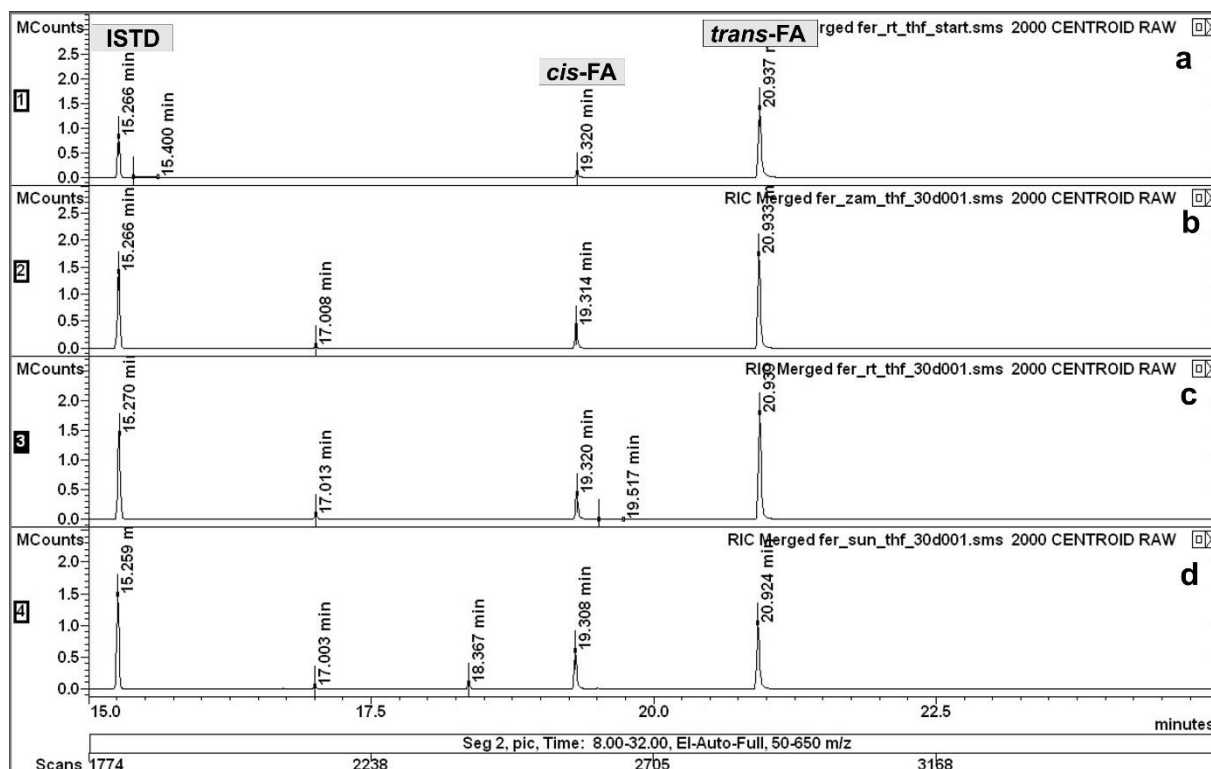


**Figure S1.** Typical chromatograms of silylated compounds present in a CA-MeOH-solution: a) freshly prepared b) after 30 days stored in the freezer at -18 °C; c) after 30 days stored at RT and darkness d) after 30 days stored at RT and daylight.

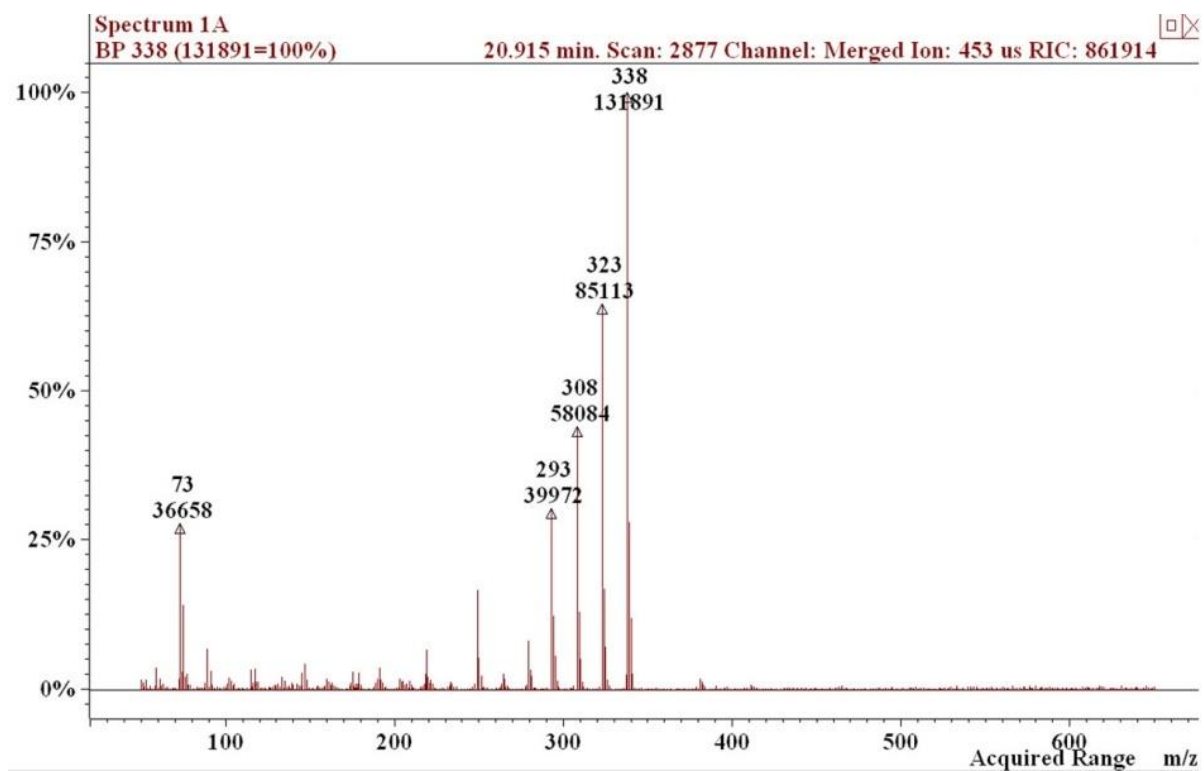


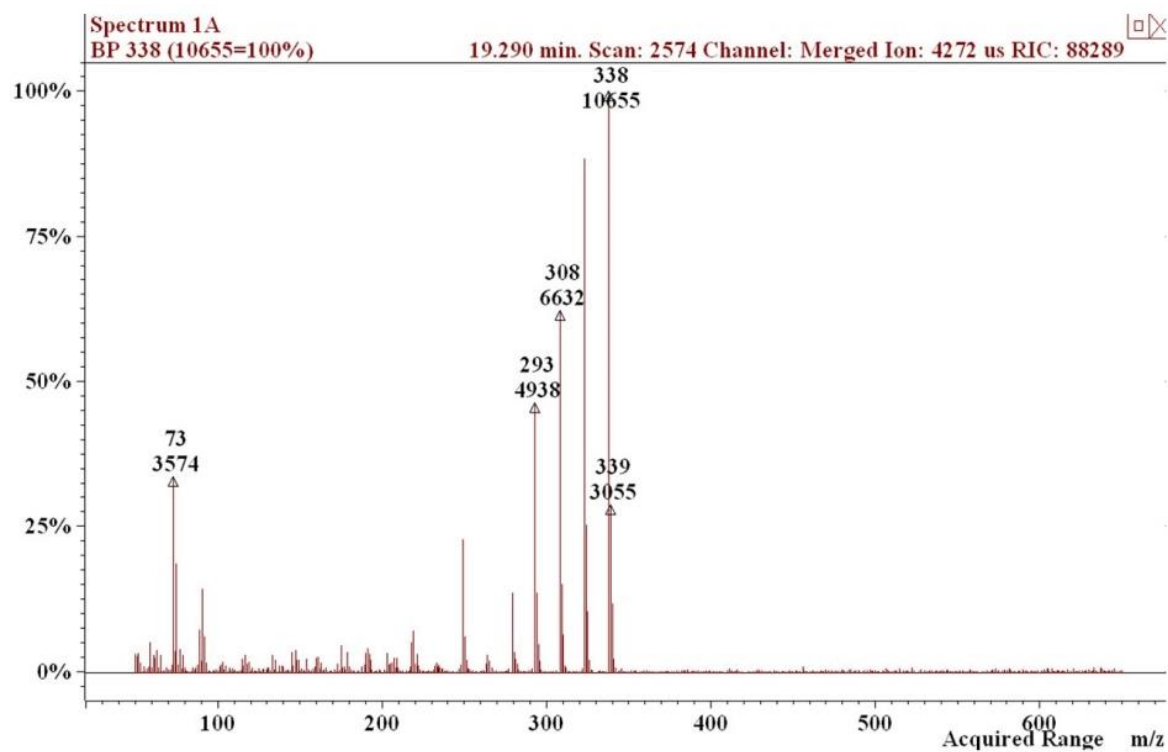


**Figure S2.** EI mass spectra of: a) *trans*-CA-3-TMS derivative; b) *cis*-CA-3-TMS derivative.



**Figure S3.** Typical chromatograms of silylated compounds present in a FA-THF-solution: a) freshly prepared b) after 30 days stored in the freezer at -18 °C; c) after 30 days stored at RT and darkness d) after 30 days stored at RT and daylight.





**Figure S4.** El mass spectra of: a) *trans*-FA-3-TMS derivative; b) *cis*-isomer.