

Supplementary material



Figure S1: Chromatogram obtained by injection of *C. maxima* 'Chadock' (P1) EO.



Figure S2. Chromatogram obtained by injection of *C. maxima* 'Maxima' (P2) EO.



Figure S3. Chromatogram obtained by injection of *C. maxima* 'Pyriformis' (P3) EO.

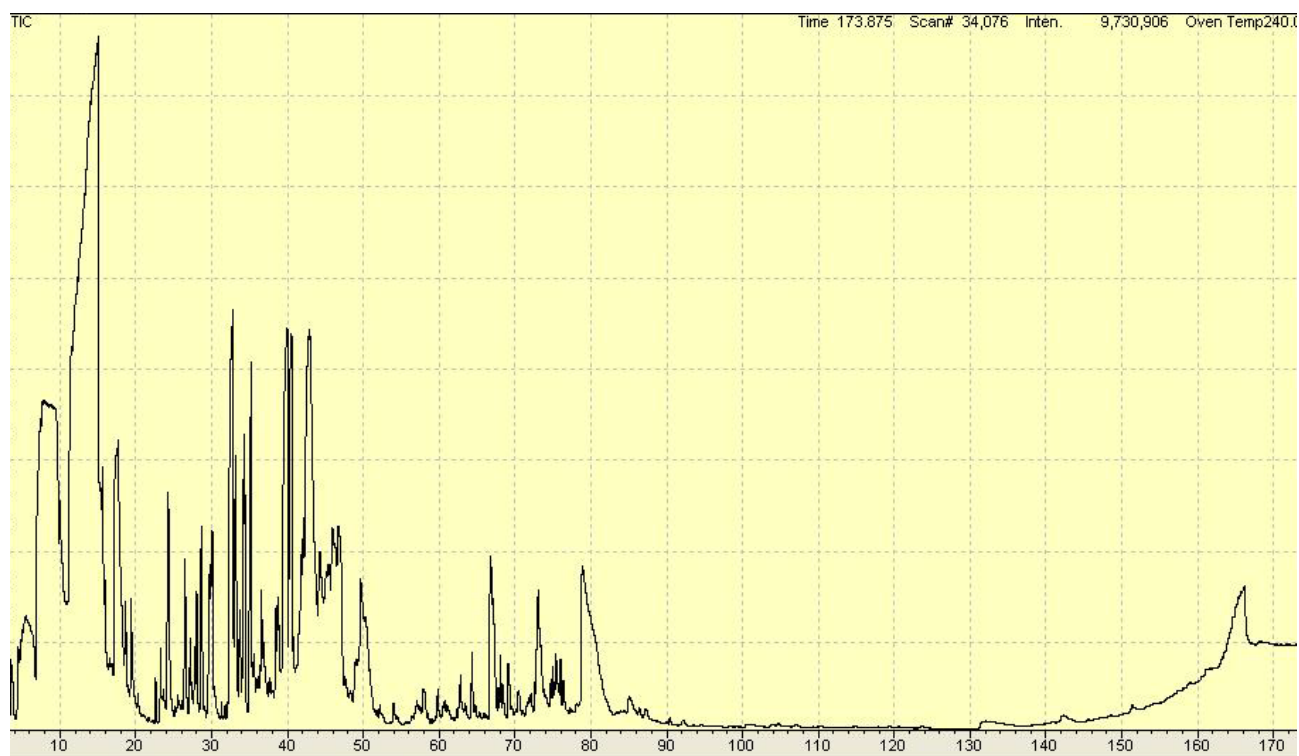


Figure S4. Chromatogram obtained by injection of *C. maxima* 'Terracciani' (P4) EO.

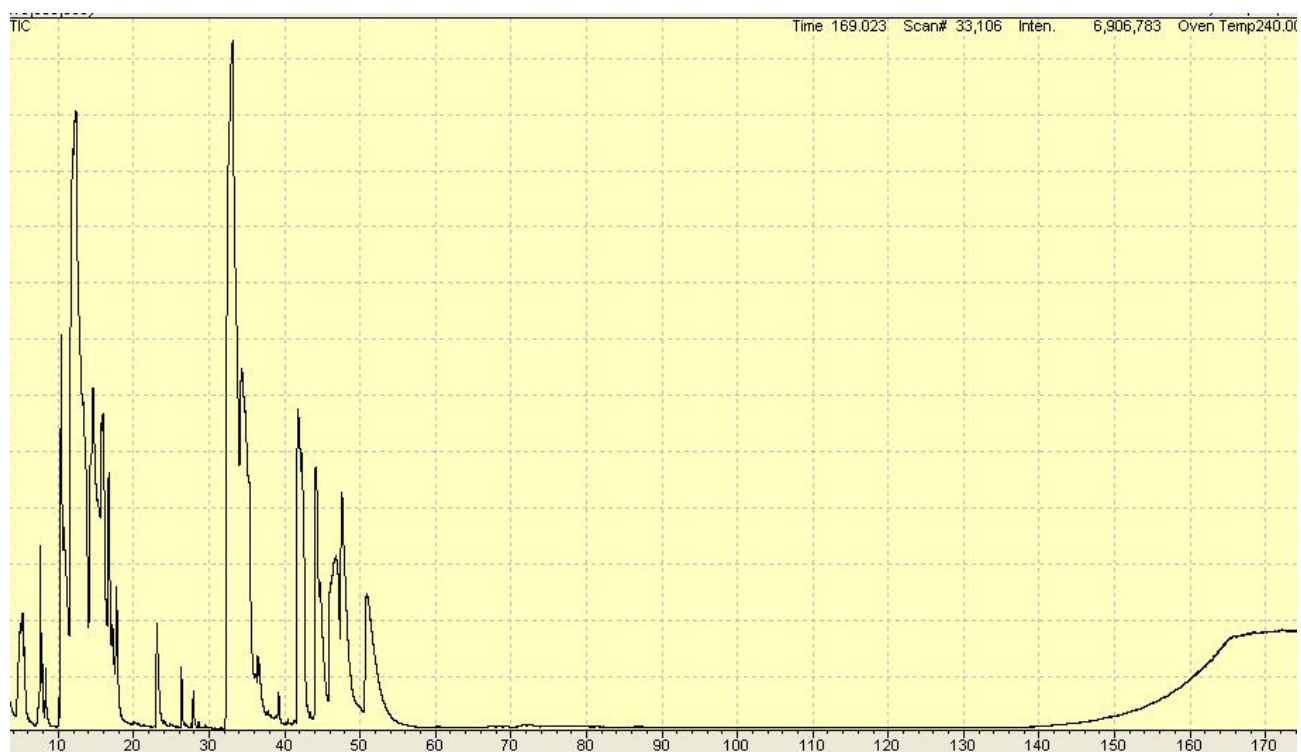


Figure S5. Chromatogram obtained by injection of *C. maxima* 'Todarii' (P5) EO.