

Supporting information

Rapid Screening of Lipase Inhibitors in *Scutellaria Baicalensis* by Using Porcine Pancreatic Lipase Immobilized on Magnetic Core-Shell Metal-Organic Frameworks

Jinfang Xu † , Pengkun Cao † , Zhiyu Fan, Xujing Luo, Gangqiang Yang, Tingli Qu,
Jianping Gao*

School of Pharmacy, Shanxi Medical University, 56 Xinjian Road, Taiyuan 030001, People's
Republic of China; xujinfang@sxmu.edu.cn (J.X.); caopengkun9257@163.com (P.C.);
13834405334@163.com (Z.F.); Luoxujing08@163.com (X.L.); yanggangqiang2021@163.com
(G.Y.); qutingli@126.com (T.Q.)

* Correspondence: Jianping Gao, E-mail: jpgao123@163.com; Tel.: +86-0351-398-5244

† Authors contributed equally to this work

Contents

Figure S1. MS spectrum of the methanol eluent of the ligand fishing by Fe ₃ O ₄ -COOH@UiO-6 6-NH ₂ @PPL.....	3
Figure S2. MS/MS spectrum of compound 1 (2', 3, 5, 6', 7-pentahydroxyflavanone).....	3
Figure S3. MS/MS spectrum of compounds 2 (scutellarein)	4
Figure S4. MS/MS spectrum of compound 3 (baicalin)	4
Figure S5. MS/MS spectrum of compound 4 (oroxylside)	5
Figure S6. MS/MS spectrum of compound 5 (wogonoside).....	5
Figure S7. MS/MS spectrum of compound 6 (skullcapflavone II).....	6
Figure S8. MS/MS spectrum of compound 7 (wogonin)	6
Figure S9. MS/MS spectrum of compound 8 (oroxylin A).....	7

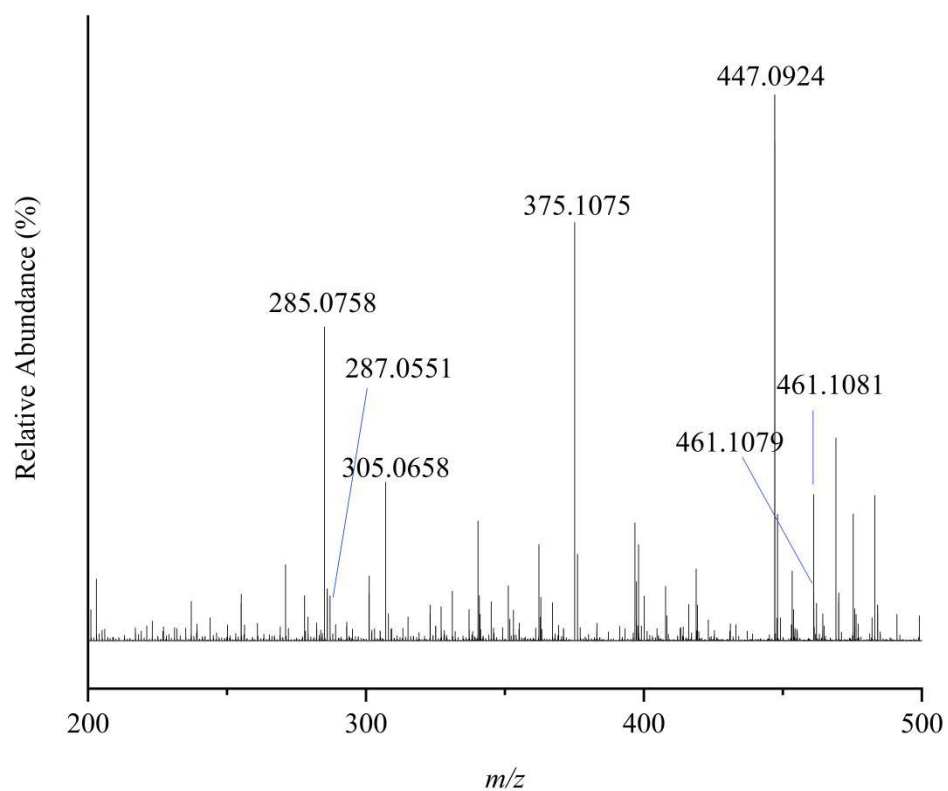


Figure S1. MS spectrum of the methanol eluent of the ligand fishing by $\text{Fe}_3\text{O}_4\text{-COOH@UiO-66-NH}_2\text{@PPL}$

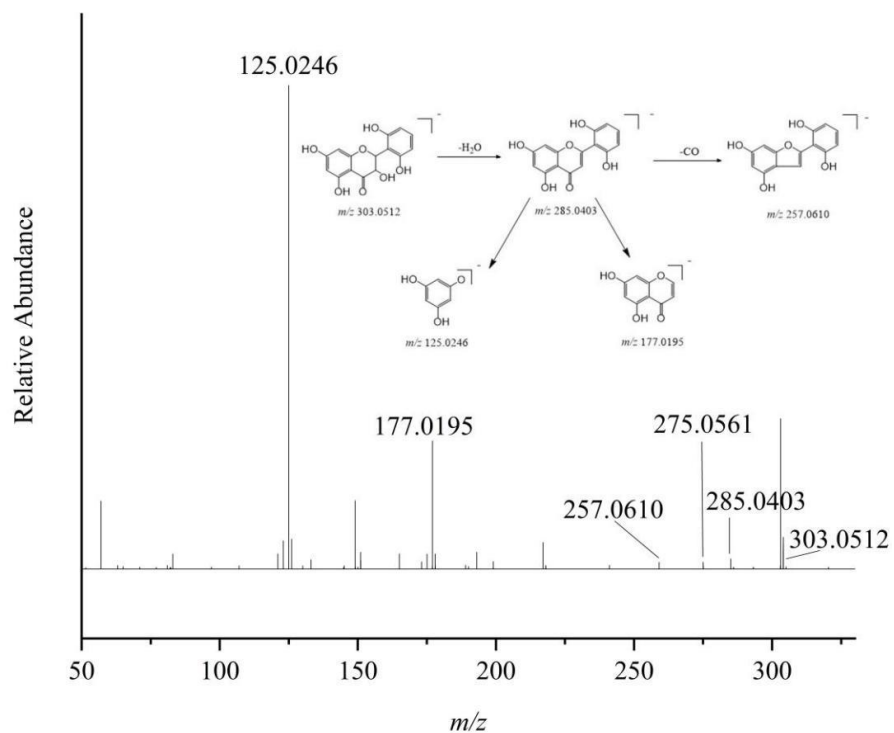


Figure S2. MS/MS spectrum of compound **1** (2', 3, 5, 6', 7-pentahydroxyflavanone)

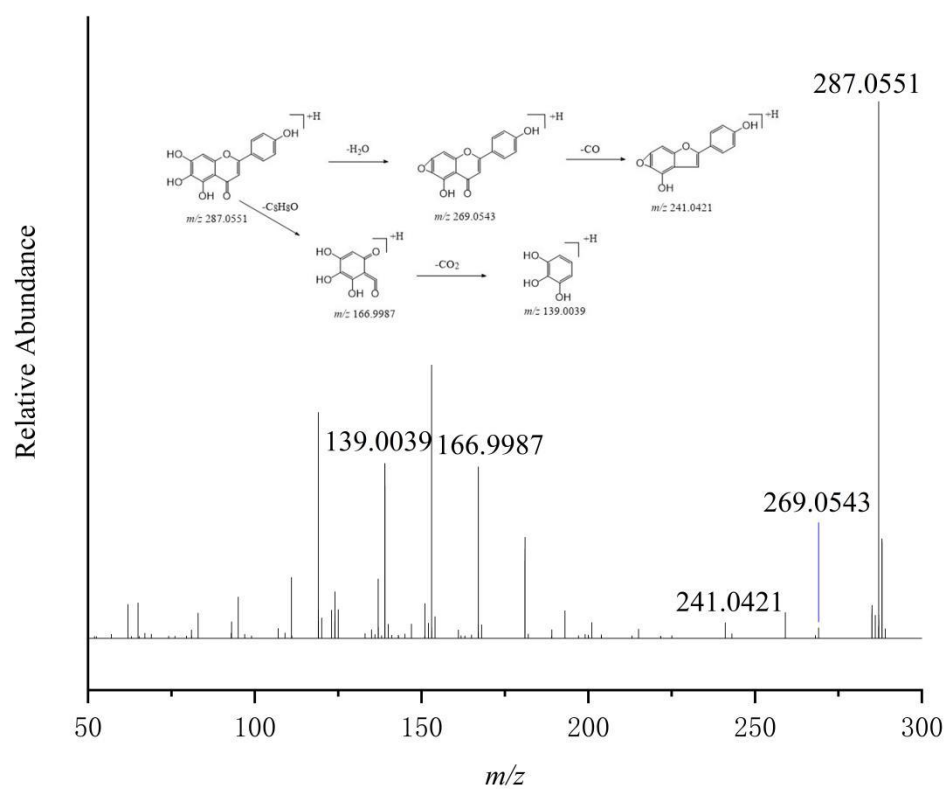


Figure S3. MS/MS spectrum of compound **2** (scutellarein)

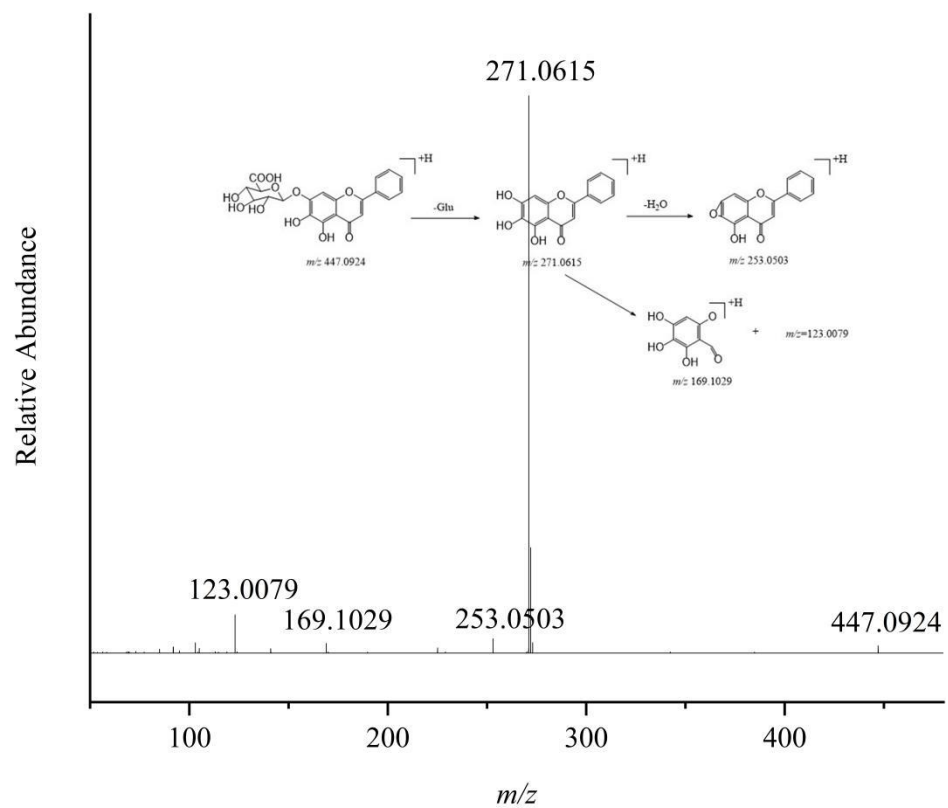


Figure S4. MS/MS spectrum of compound **3** (baicalin)

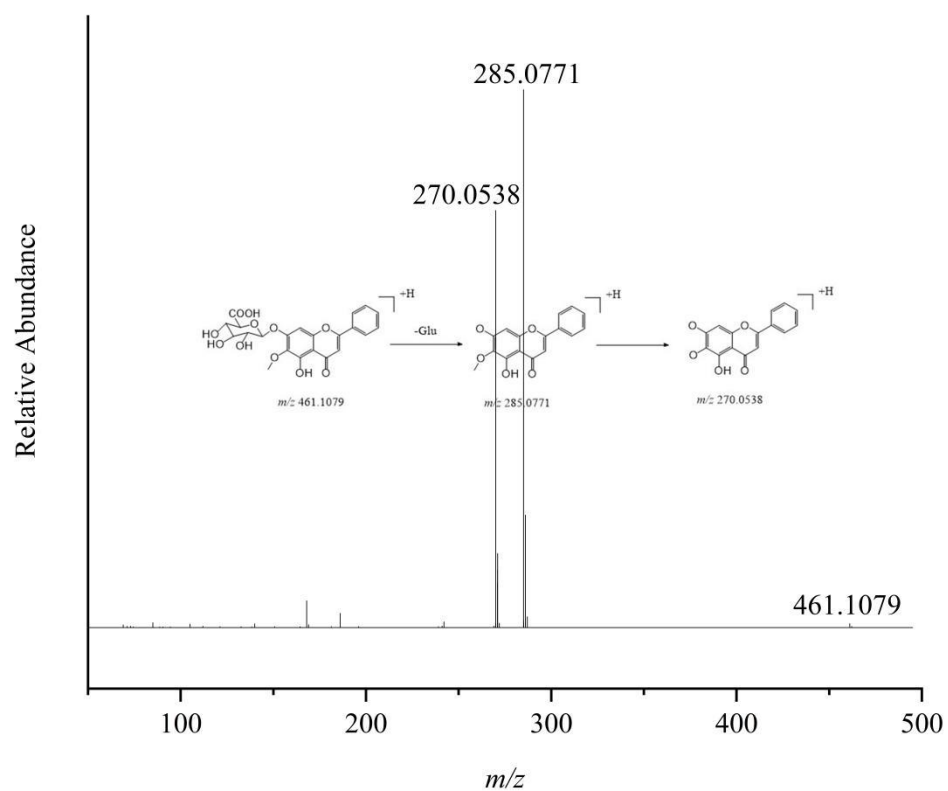


Figure S5. MS/MS spectrum of compound **4** (oroxyloside)

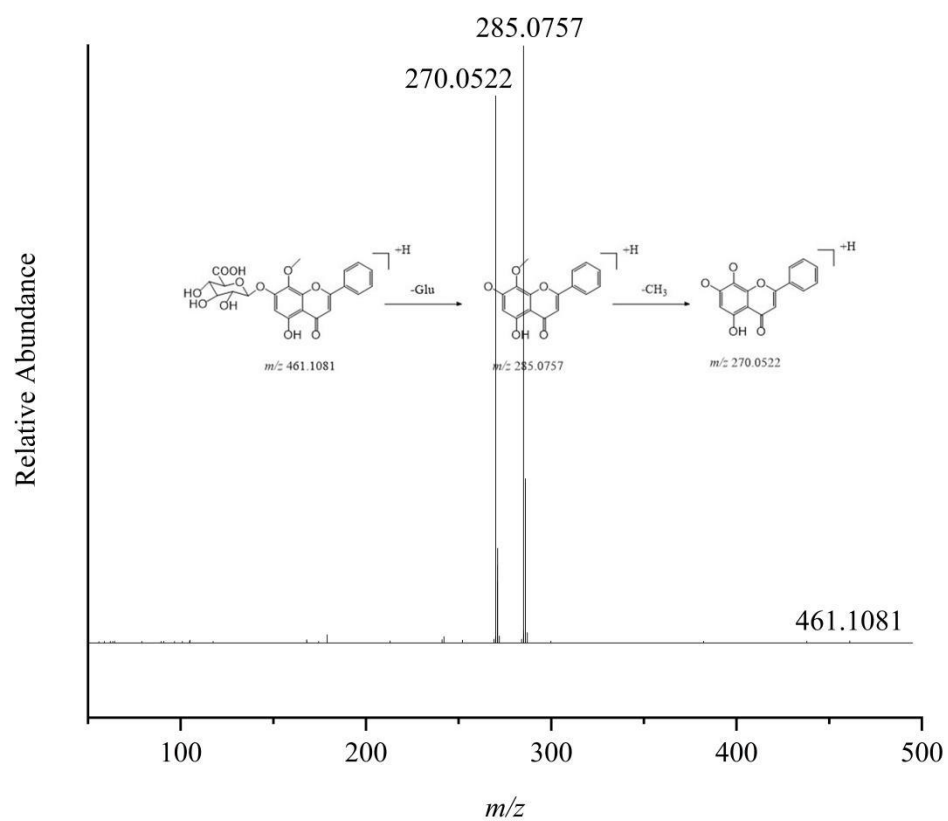


Figure S6. MS/MS spectrum of compound **5** (wogonoside)

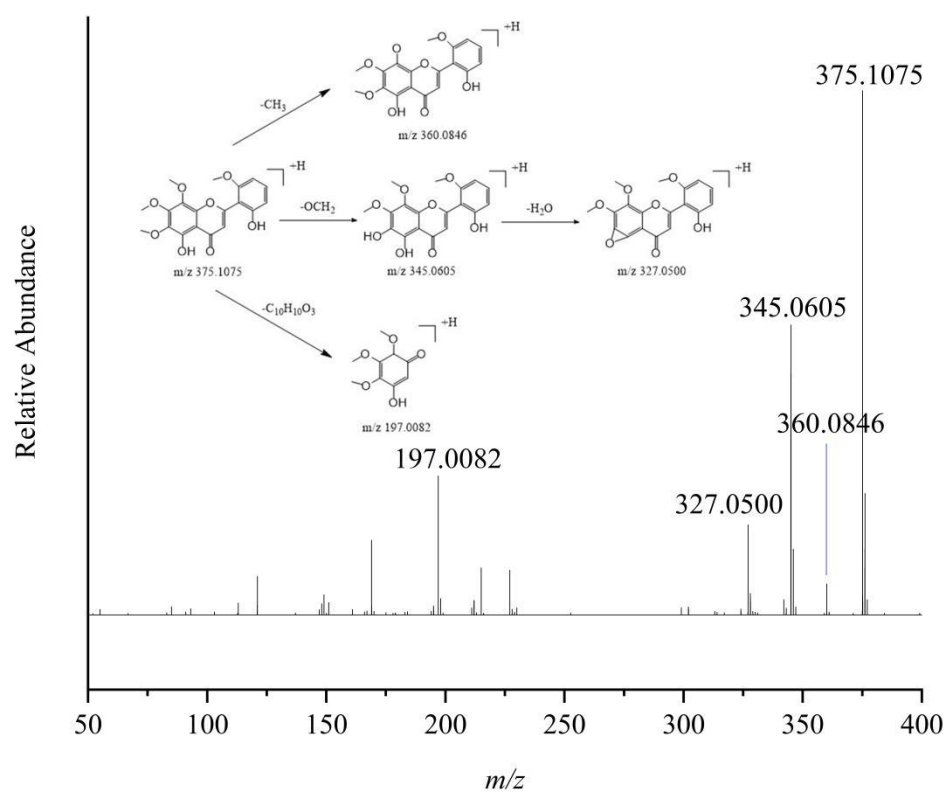


Figure S7. MS/MS spectrum of compound **6** (skullcapflavone II)

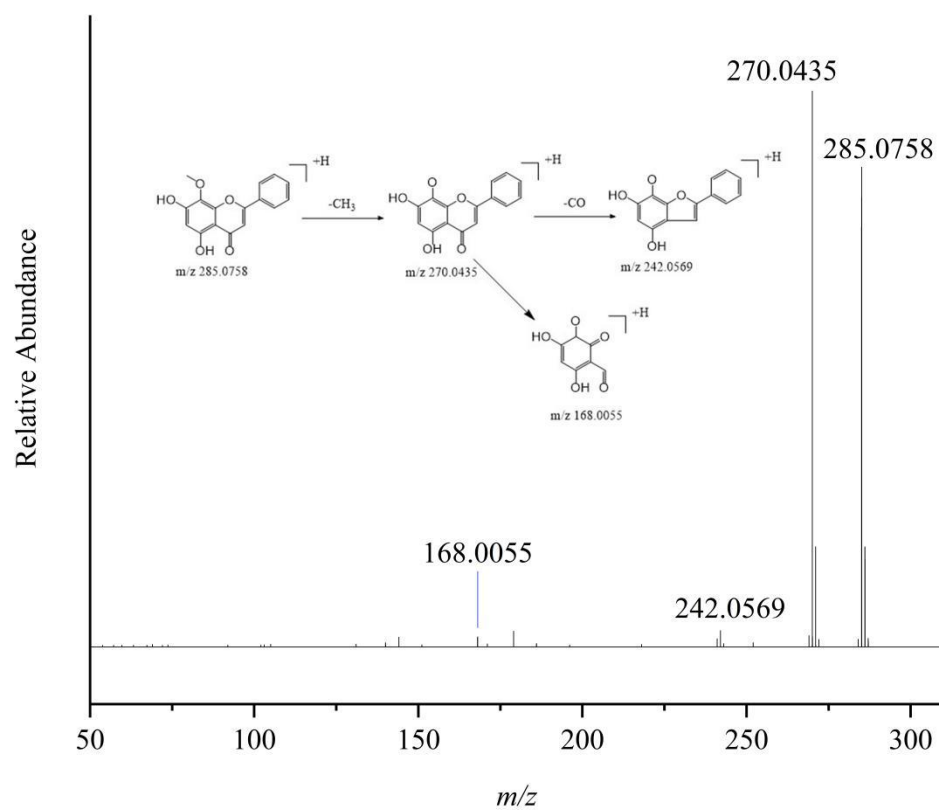


Figure S8. MS/MS spectrum of compound **7** (wogonin)

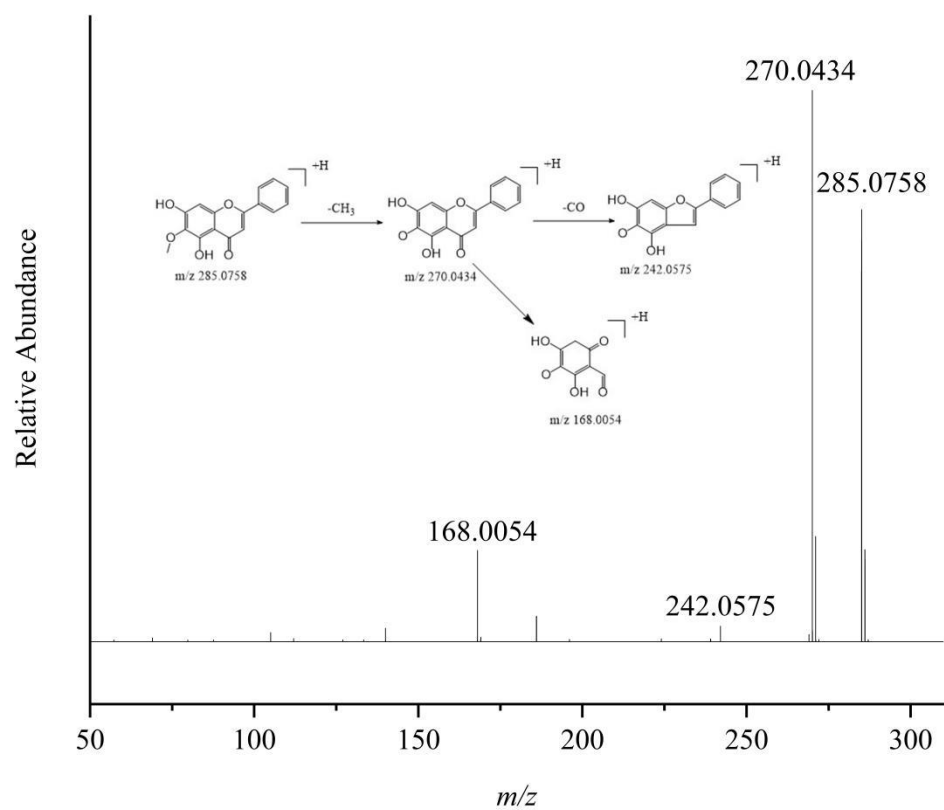


Figure S9. MS/MS spectrum of compound **8** (oroxylin A)