

Supplementary Materials

PET imaging of fructose metabolism in a rodent model of neuroinflammation with 6- ^{18}F fluoro-6-deoxy-D-fructose.

Amanda J. Boyle^{1,2*}, Emily Murrell¹, Junchao Tong¹, Christin Schifani¹, Andrea Narvaez¹, Melinda Wuest³, Frederick West^{3,4}, Frank Wuest^{3,4}, and Neil Vasdev^{1,2*}

¹ Azrieli Centre for Neuro-Radiochemistry, Brain Health Imaging Centre, Centre for Addiction and Mental Health, 250 College St, Toronto, M5T 1R8, ON., Canada

² Department of Psychiatry, University of Toronto, 27 King's College Circle, Toronto, M5T-1R8, ON., Canada

³ Department of Chemistry, University of Alberta, Edmonton, T6G-2N4, Alberta, Canada

⁴ Department of Oncology, University of Alberta, Edmonton, T6G-1Z2, Alberta, Canada

*Correspondence: amy.boyle@camh.ca, neil.vasdev@utoronto.ca Tel.: 416-535-8501 ext. 30884 (A.J. B.); 416-535-8501 ext. 30988 (N.V.)

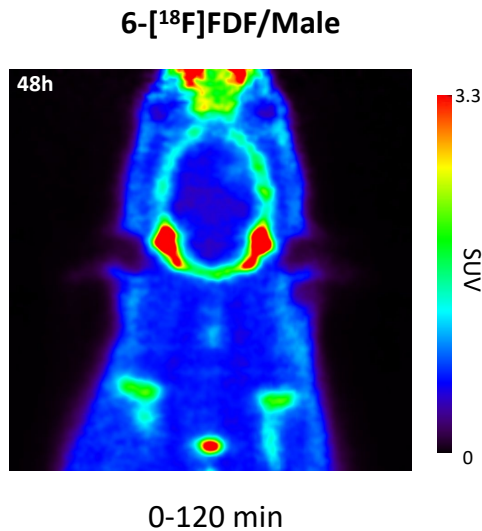


Figure S1. Unstripped static 6- ^{18}F FDF image of **Figure 1A** (48 h post-LPS injection in a male rat), showing radioactivity accumulation in the skull; but also increased uptake in the LPS-injected right striatum *vs.* the left side.

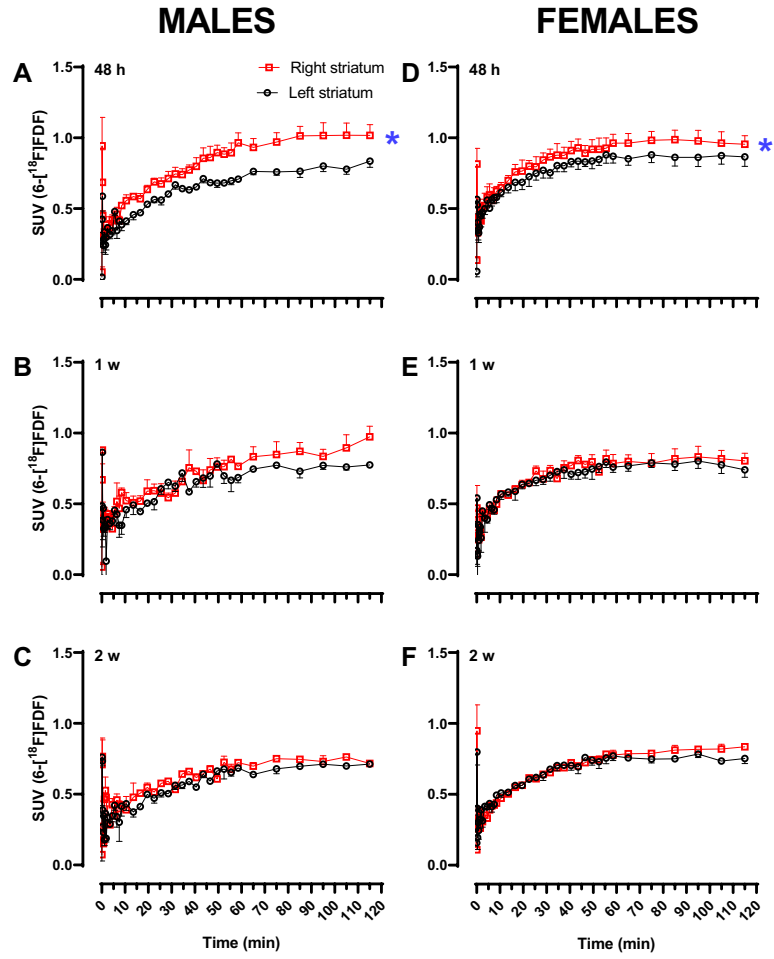


Figure S2. TACs of 6-[^{18}F]FDF in striatum of male and female rats injected unilaterally with LPS in the right striatum. Average TACs (\pm SEM) of 6-[^{18}F]FDF are shown in the right and left striatum of male (A-C) rats at 48 hours (n=4), 1 week (n=2), and 2 weeks (n=2), respectively, post-LPS injection and of female rats (D-F) at 48 hours (n=3), 1 week (n=3), and 2 weeks (n=3), respectively, post-LPS injection. * $P < 0.05$, right vs left striatum at 48 hours (repeated measures ANOVA).

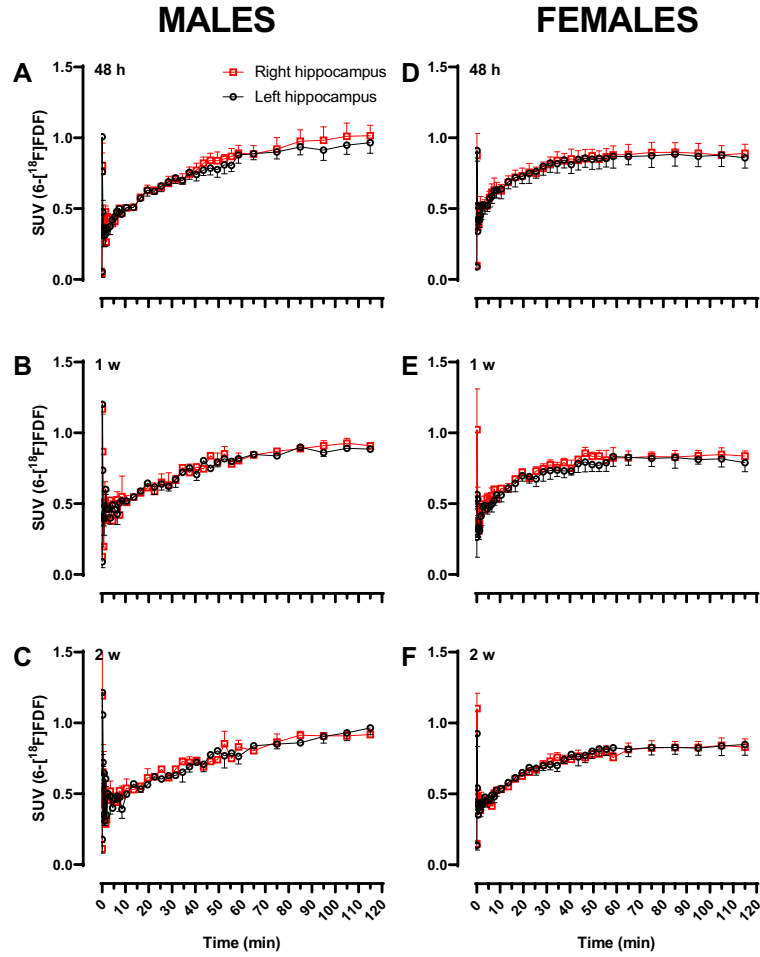


Figure S3. TACs of 6-[¹⁸F]FDF in hippocampus of male and female rats injected unilaterally with LPS in the right striatum. Average TACs (\pm SEM) of 6-[¹⁸F]FDF are shown in the right and left hippocampus of male (A-C) rats at 48 hours (n=4), 1 week (n=2), and 2 weeks (n=2), respectively, post-LPS injection and of female rats (D-F) at 48 hours (n=3), 1 week (n=3), and 2 weeks (n=3), respectively, post-LPS injection.

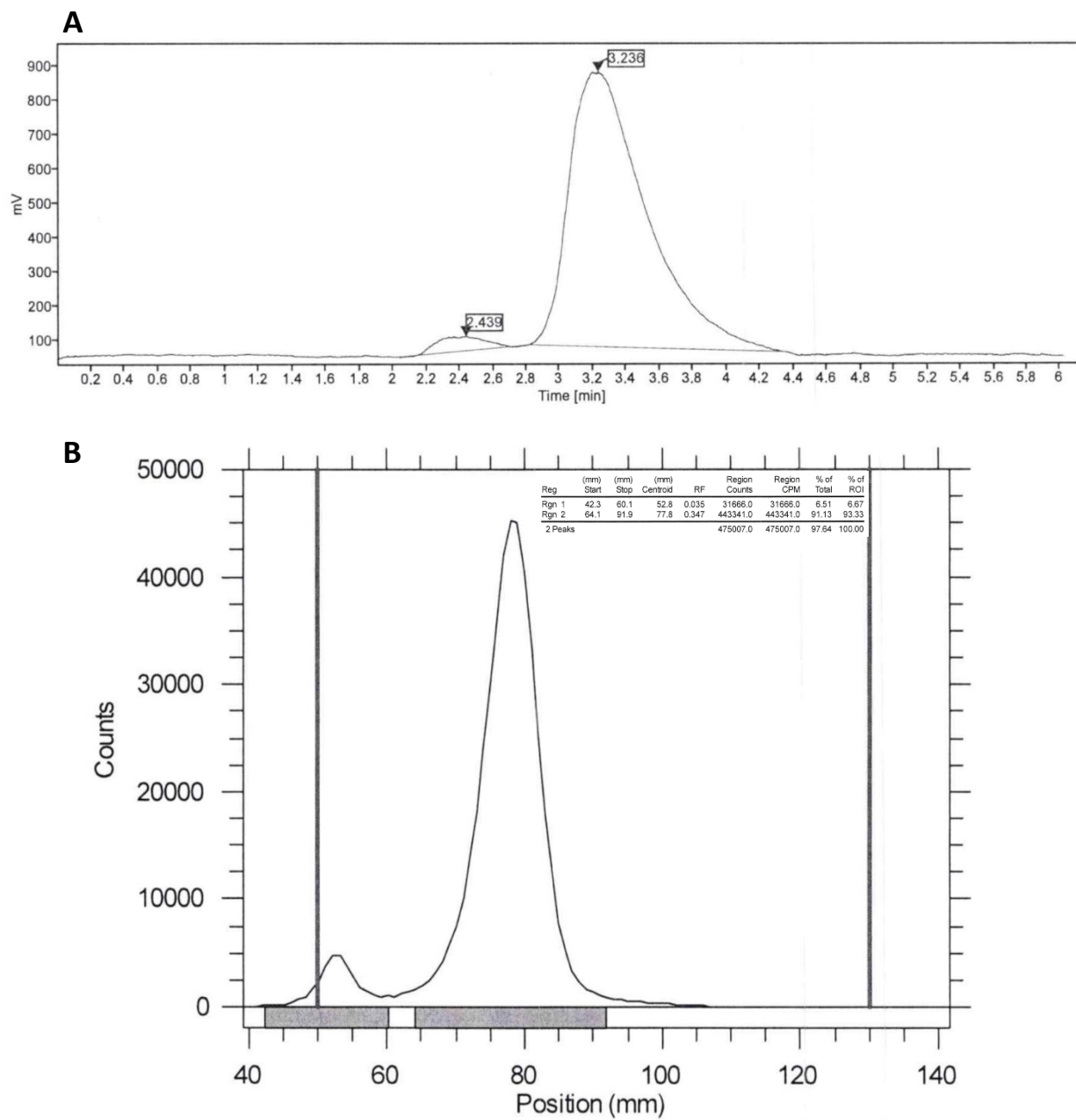


Figure S4. Results of quality control of a 6-[^{18}F]FDF production with residual [^{18}F]fluoride. (A) Radio-HPLC chromatogram shows 6-[^{18}F]FDF at 3.2 min and residual [^{18}F]fluoride at 2.4 min; (B) Radio-TLC also shows 6-[^{18}F]FDF (93.3%) at 78 mm and residual [^{18}F]fluoride (6.7%) at 53 mm.