

Figure S1. LC/QTOF-MS (ESI⁻) fragmentation pattern of pinellic acid from (a) bread and (b) pure standard.

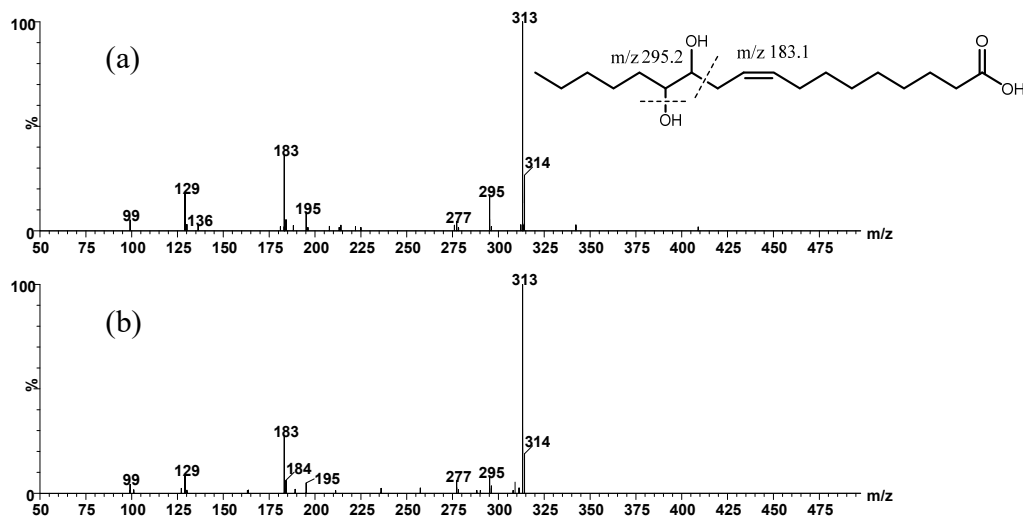


Figure S2. LC/QTOF-MS (ESI⁻) fragmentation pattern of 12,13-dihydroxy-9(Z)-octadecenoic acid from (a) bread and (b) pure standard.

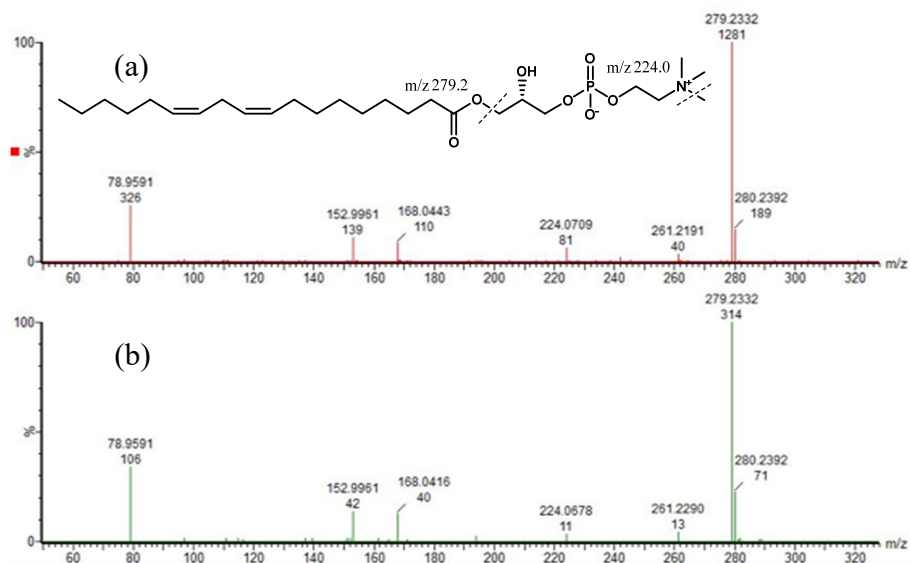


Figure S3. LC/QTOF-MS (ESI⁻) fragmentation pattern of 1-(9Z,12Z-octadecadienoyl)-sn-glycero-3-phosphocholine from (a) bread and (b) pure standard.

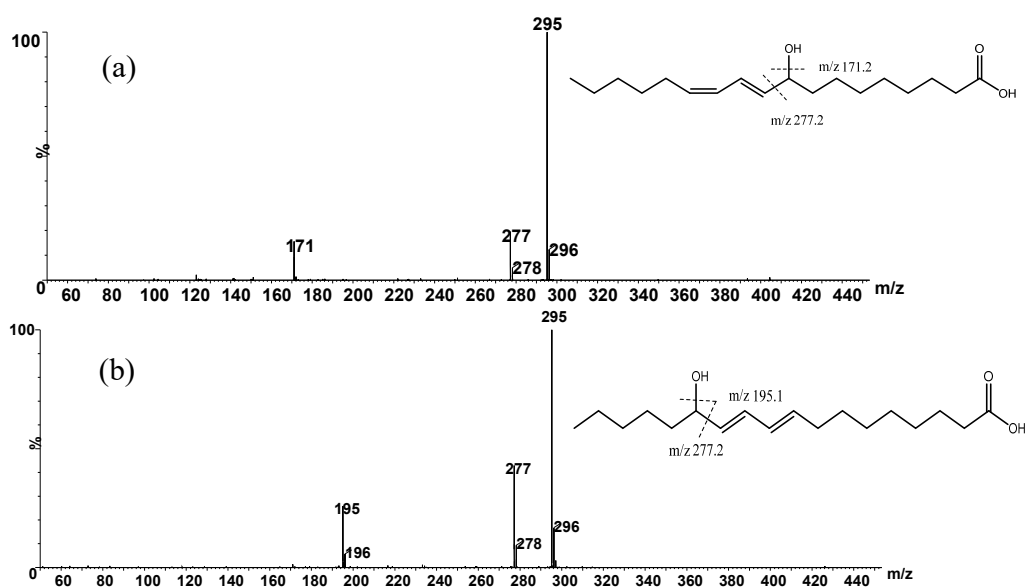


Figure S4. LC/QTOF-MS (ESI⁻) fragmentation pattern of 10(E),12(Z)-9-hydroxyoctadecadienoic acid (a) and 9(E),11(E)-13-hydroxyoctadecadienoic acid (b).

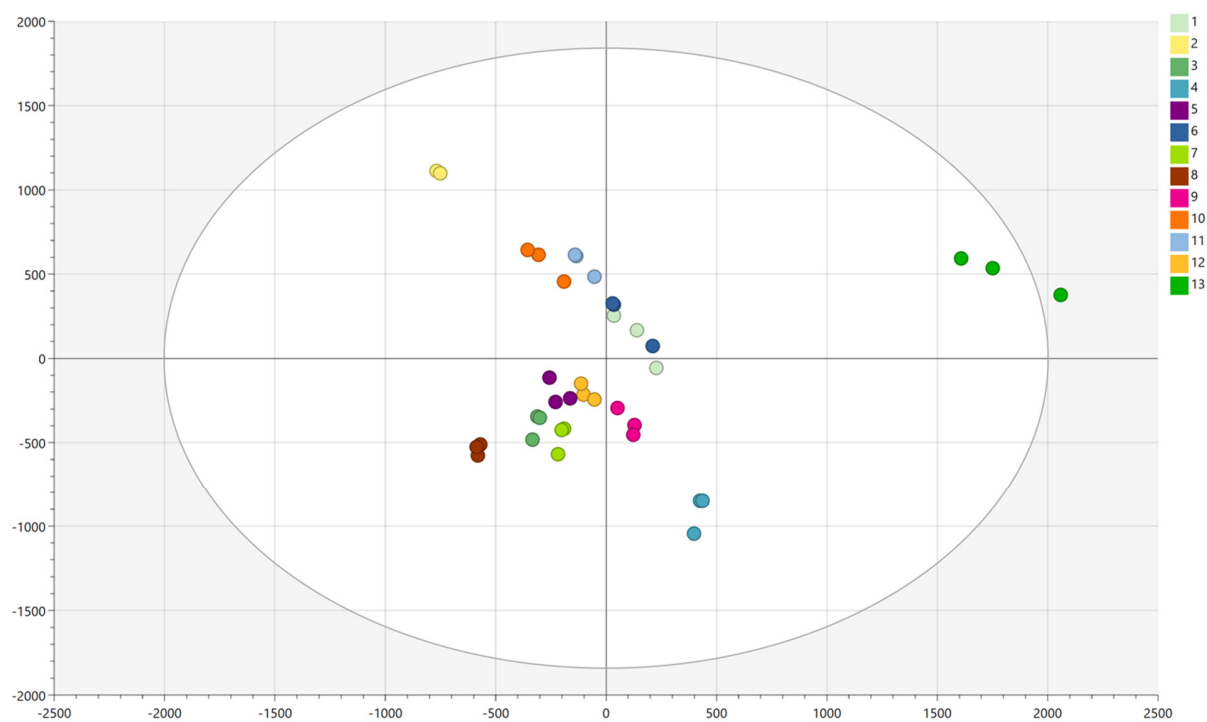


Figure S5. Scores scatter plot of PCA model (Pareto scaling) for LC/MS chemical profiling data ($n = 791$) from thirteen whole wheat bread samples in triplicate. Colored by sample.