

Supporting information

Determination of Methyl Methanesulfonate and Ethyl Methylsulfonate in New Drug for the Treatment of Fatty Liver Using Derivatization Followed by High-Performance Liquid Chromatography with Ultraviolet Detection

Table of Contents

Figure S1. HPLC chromatograms of different derivatization solvents.....	S1
Figure S2. HPLC chromatograms of temperatures and times of derivatization reaction...	S2
Figure S3. HPLC chromatograms of concentrations of derivatization reagent added.....	S3
Figure S4. HPLC chromatograms of concentrations of NaOH added.....	S4
Figure S5. HPLC chromatograms of concentrations of Na ₂ CO ₃ added.....	S5
Figure S6. HPLC chromatograms of amount of Et ₃ N added.....	S6
Figure S7. HPLC chromatograms of types of base.....	S6
Figure S8. HPLC chromatograms of samples.....	S7
Figure S9. GC-MS chromatograms of samples.....	S7

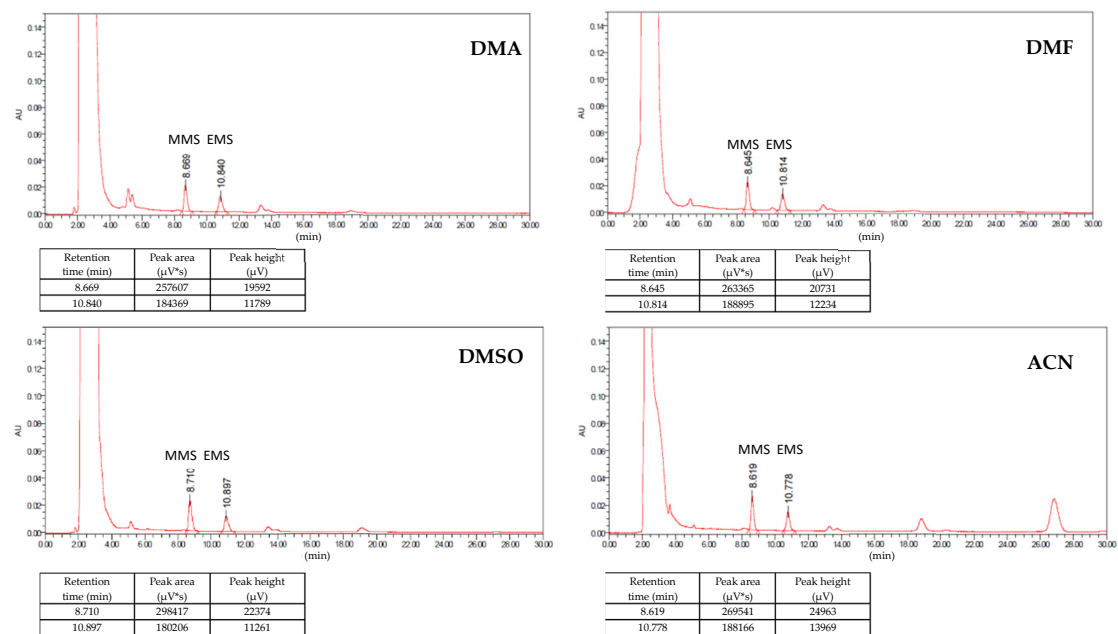


Figure S1. HPLC chromatograms of different derivatization solvents.

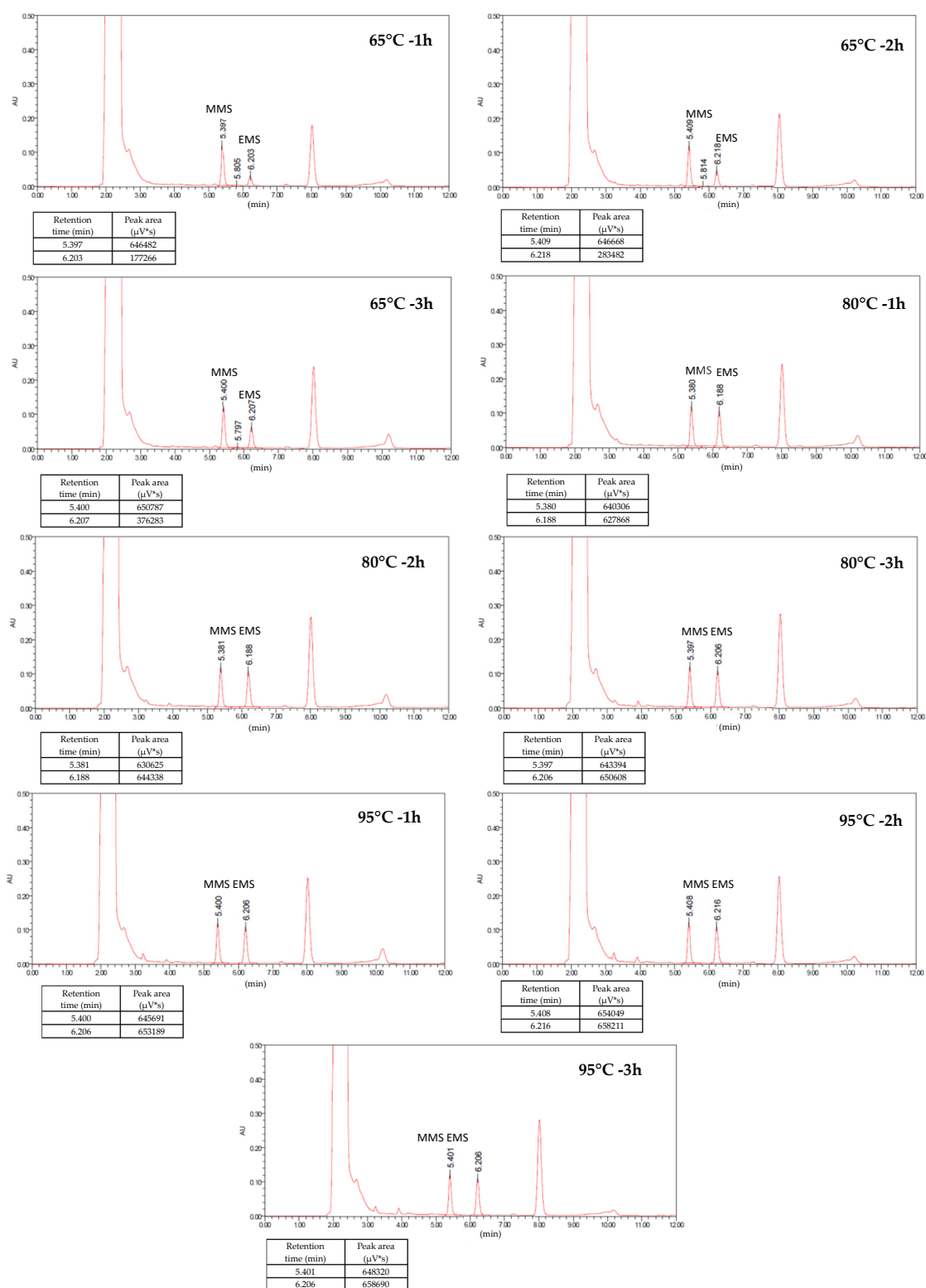


Figure S2. HPLC chromatograms of temperatures and times of derivatization reaction.

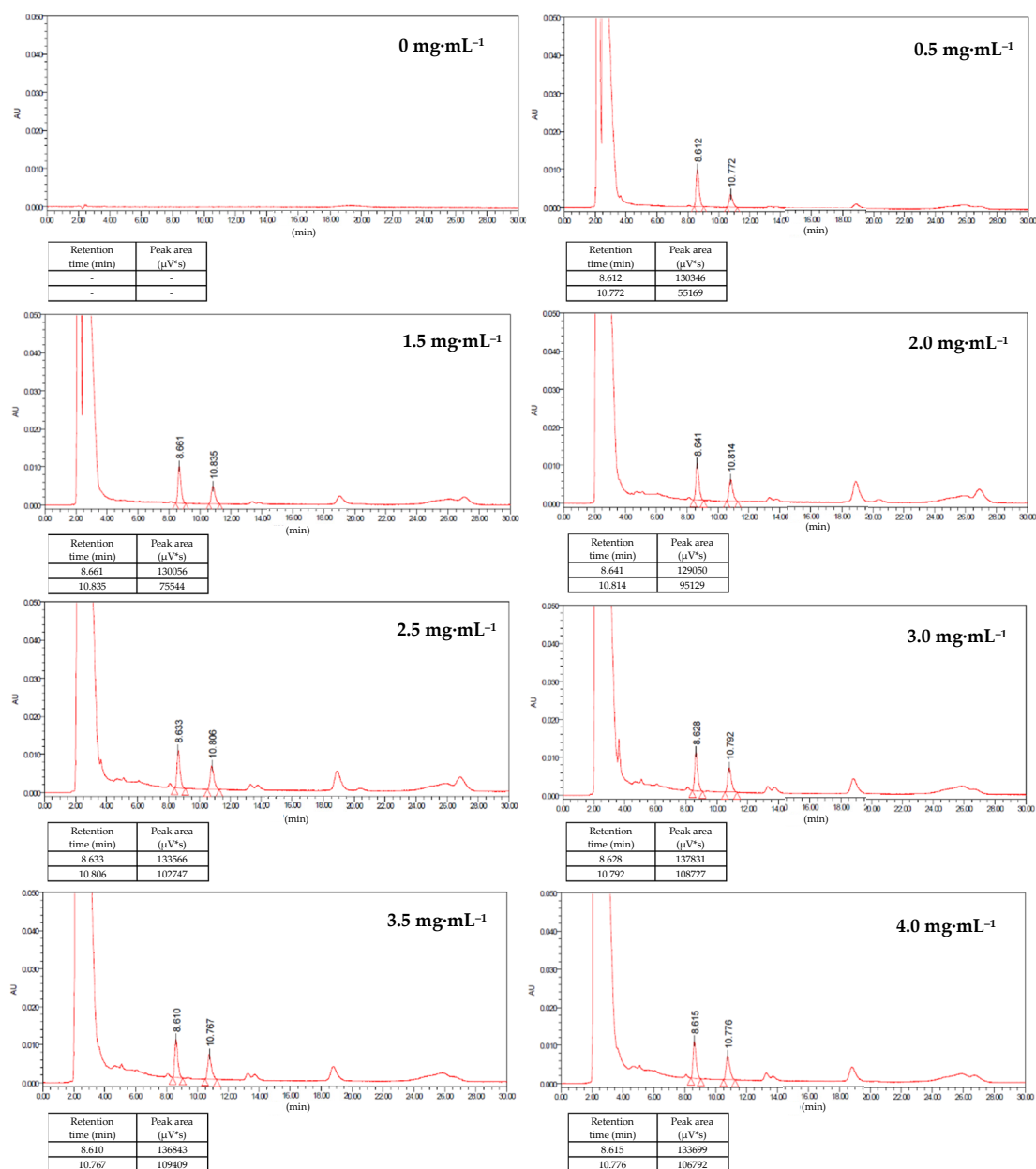


Figure S3. HPLC chromatograms of concentrations of derivatization reagent added.

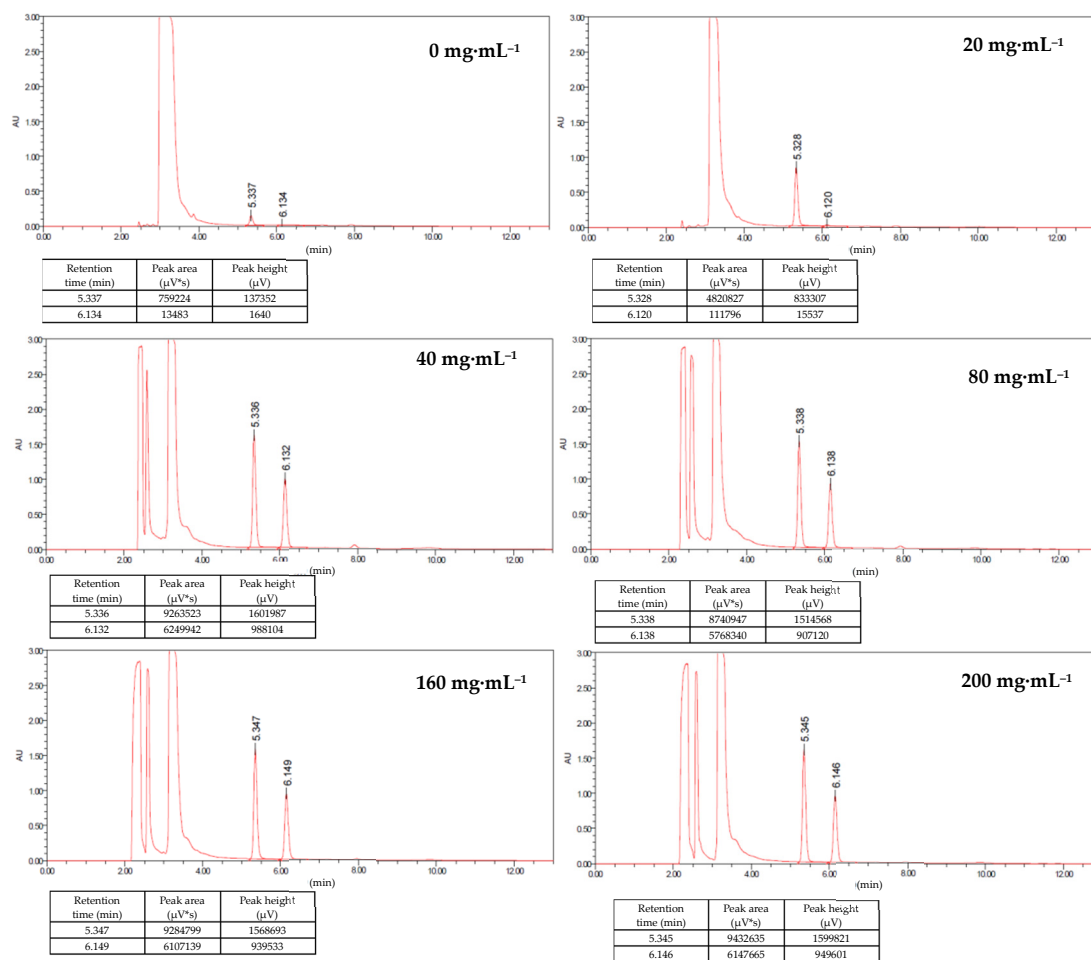


Figure S4. HPLC chromatograms of concentrations of NaOH added.

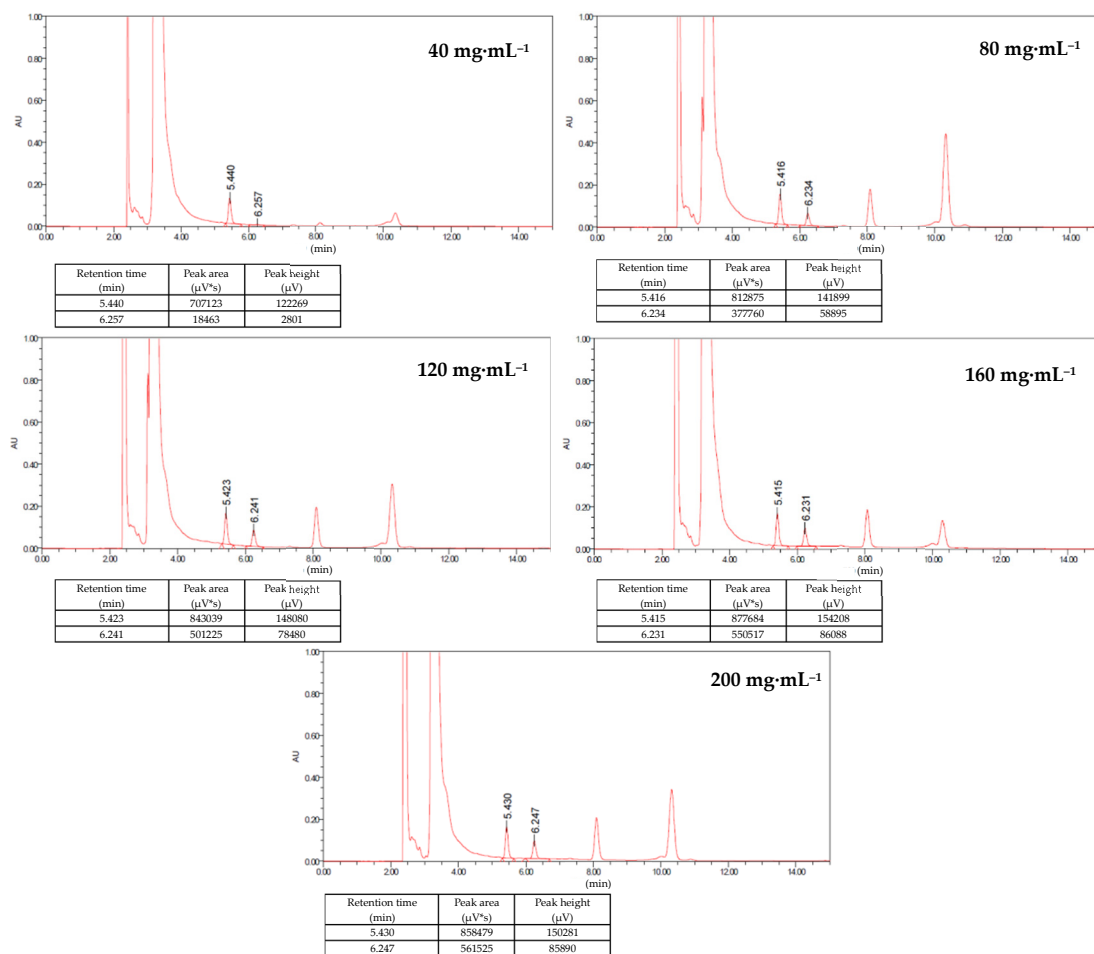


Figure S5. HPLC chromatograms of concentrations of Na₂CO₃ added.

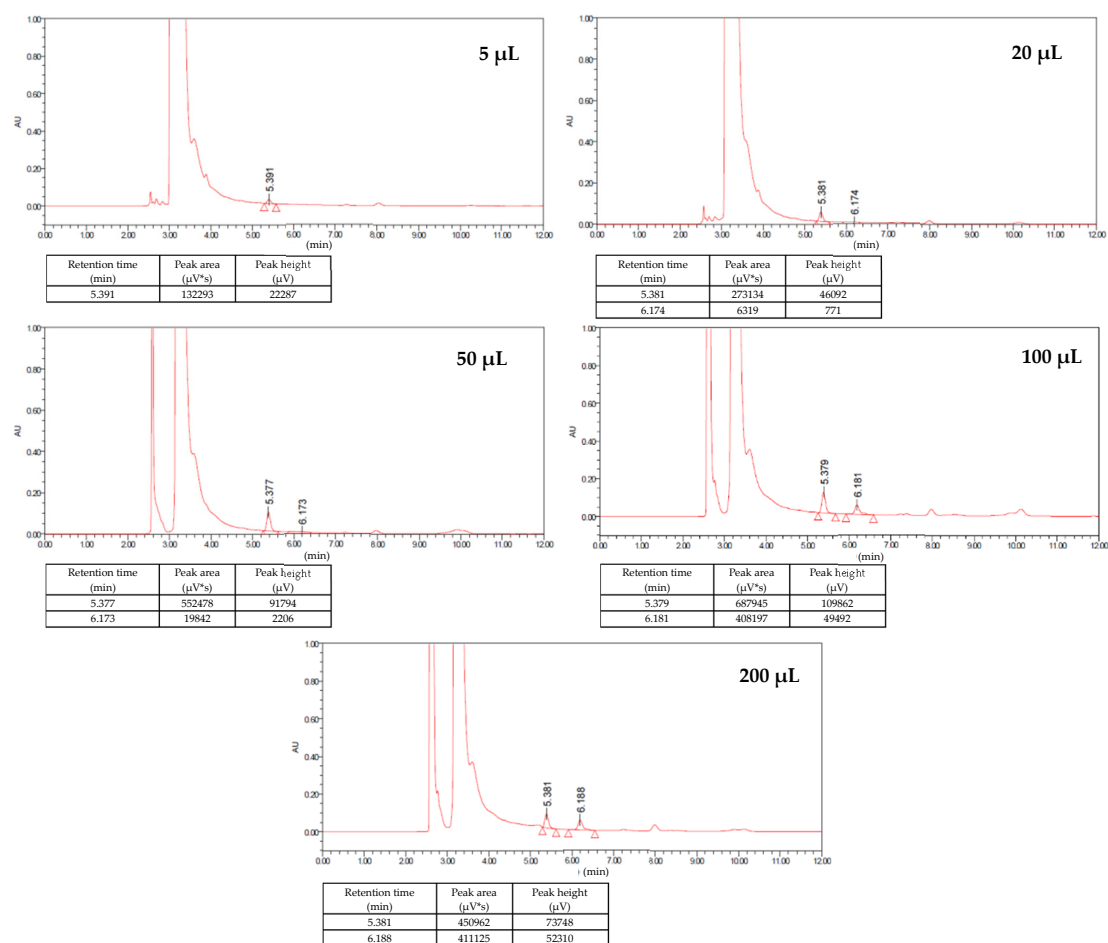


Figure S6. HPLC chromatograms of amount of Et_3N added.

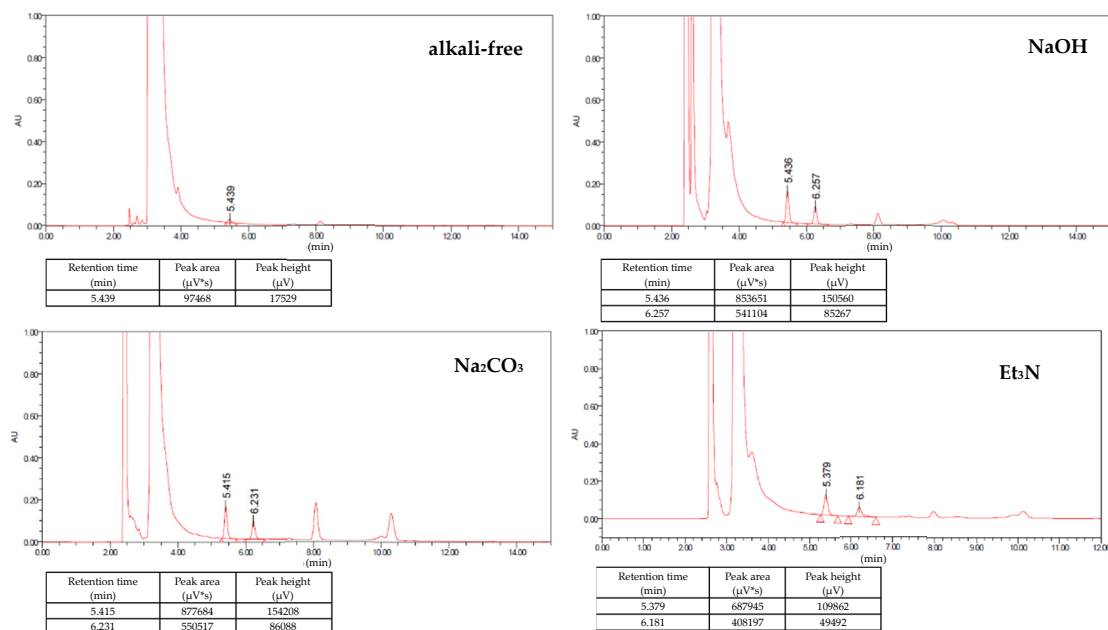


Figure S7. HPLC chromatograms of types of base.

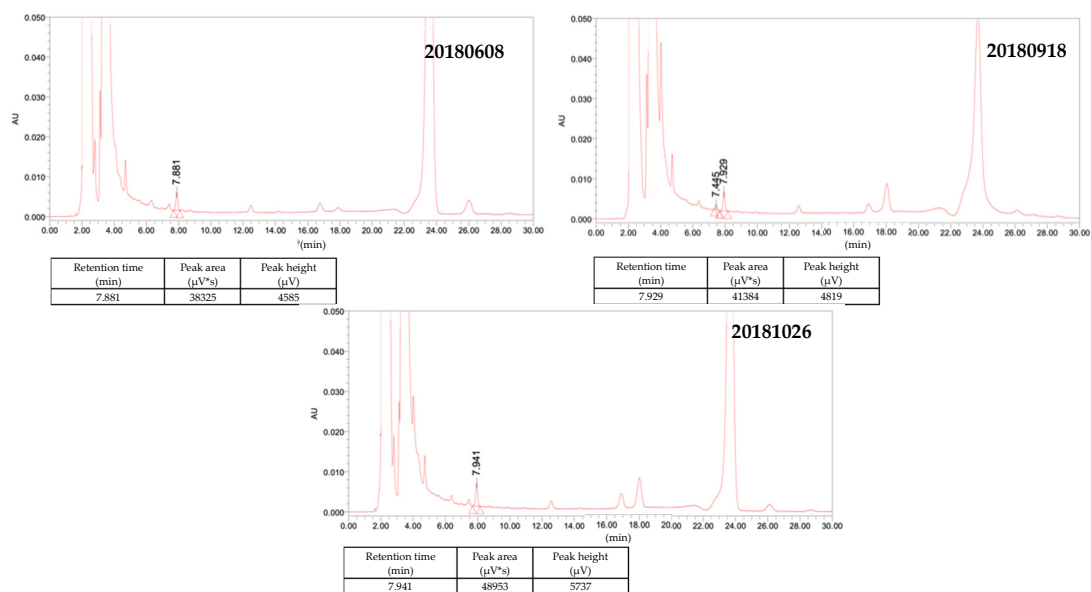


Figure S8. HPLC chromatograms of samples.

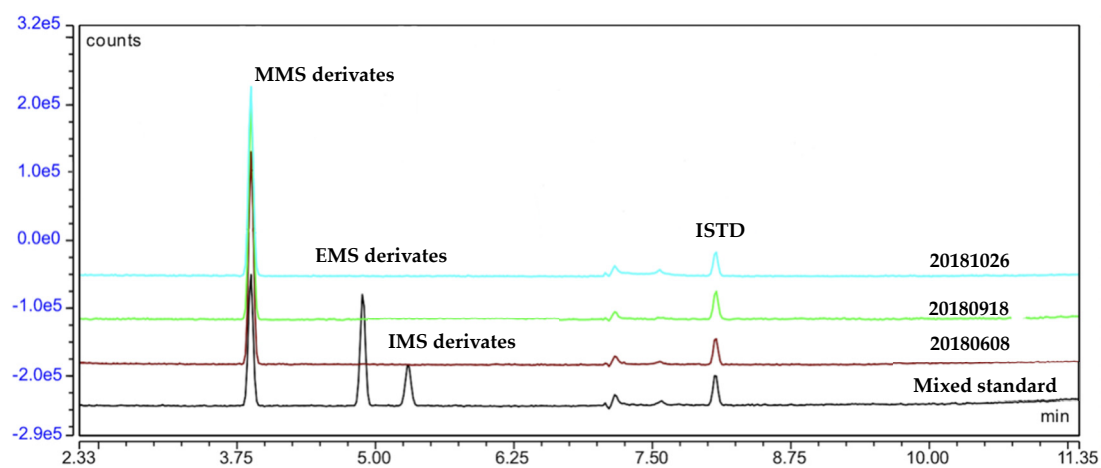


Figure S9. GC-MS chromatograms of samples