

Supplementary information

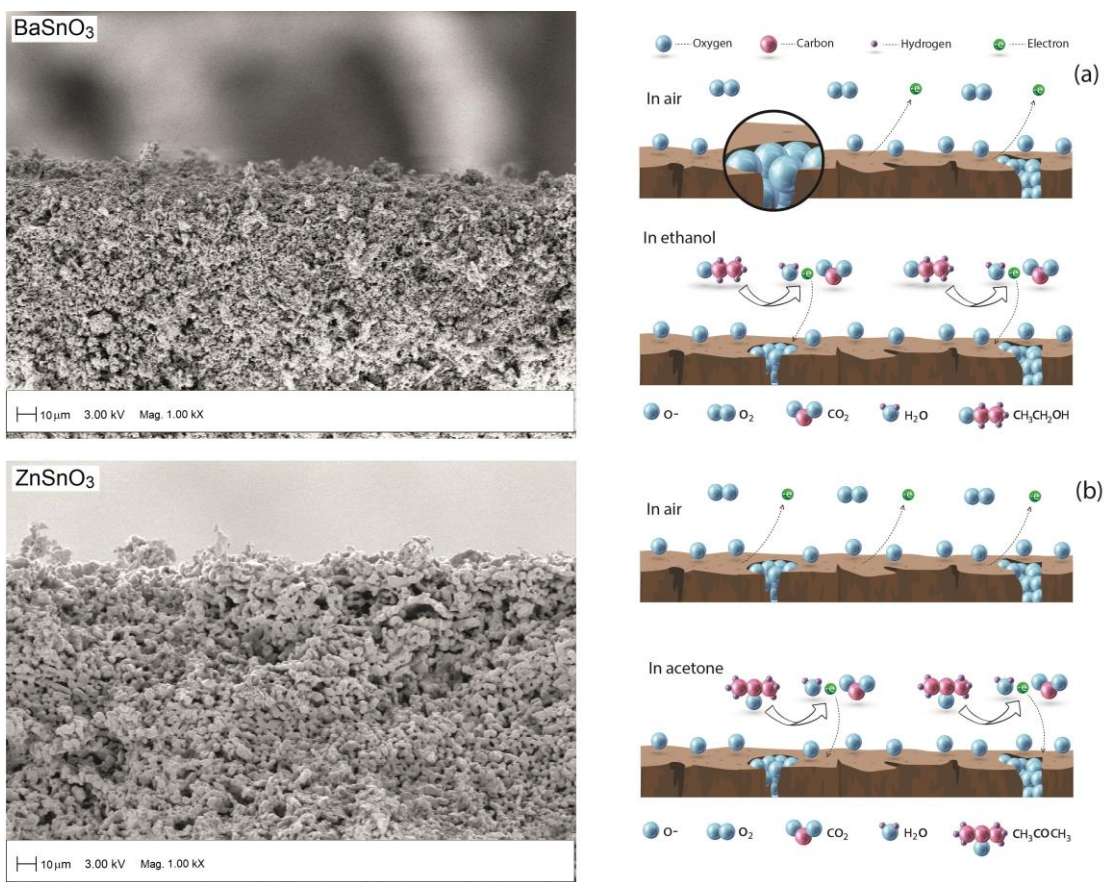


Fig. S1. Scanning electron microscopy images and illustration of the gas sensing mechanism of the (a) BaSnO₃ and (b) ZnSnO₃ sensors.

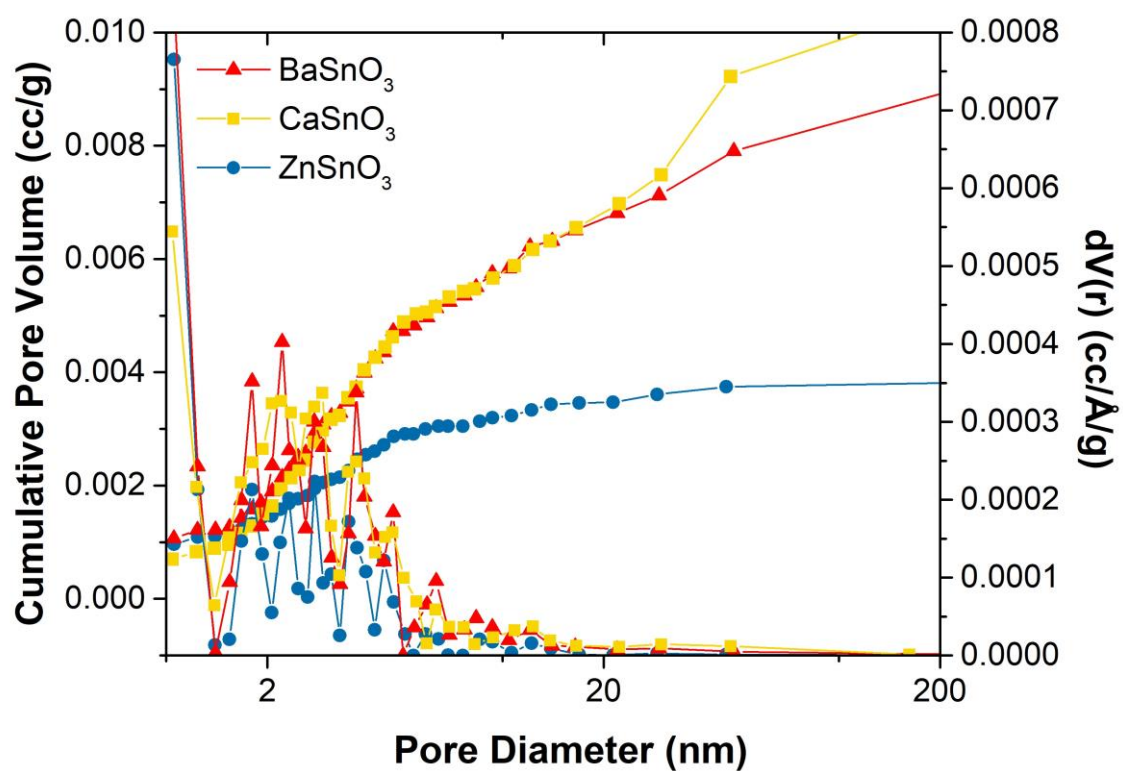


Fig. S2. Pore size distributions by nitrogen absorption-desorption obtained by Quantachrome Instruments modelo NOVA 1000e for the BaSnO₃, ZnSnO₃, and CaSnO₃ ceramic bodies.