

Supplementary materials

Characterization of biological properties of individual phenolamides and phenolamide-enriched leaf tomato extracts

Marwa Roumani ^{1,†}, Armelle Ropars ^{2,†}, Christophe Robin ¹, Raphaël E. Duval ³, Jean-Pol Frippiat ², Michel Boisbrun ^{3,*} and Romain Larbat ^{1,4,*}

¹ Université de Lorraine, INRAE, LAE, F-54000 Nancy, France

² Université de Lorraine, SIMPA, F-54000 Nancy, France

³ Université de Lorraine, CNRS, L2CM, F-54000 Nancy, France

⁴ Institut Agro, University of Angers, INRAE, IRHS, SFR QUASAV, F-49000 Angers, France

* Correspondence: michel.boisbrun@univ-lorraine.fr (M.B.); romain.larbat@inrae.fr (R.L.)

† These authors contributed equally to this work.

Table of contents

Figure S1. Minimum inhibitory concentrations (MICs) in mg/L of Kukoamine A (Kuk_A), caffeoylputrescine (CP), and N^1,N^5,N^{14} -tris(dihydrocaffeoyl)spermine (TDHCS) against listed bacterial strains.

Figure S2. TDHCS cytotoxic activity on MCF-7 cells. Mean of eight points were calculated and standard deviation are represented.

Figure S3. TDHCS cytotoxic activity on Caco-2 cells. Mean of eight points were calculated and standard deviation are represented.

Figure S4. Calibration curves for metabolites quantification at specified wavelength

Bacterial strains	Kuk_A (mg/L)	CP (mg/L)	TDHCS (mg/L)
<i>Staphylococcus aureus</i>	256	512	>1024
<i>Enterococcus faecalis</i>	1024	1024	>1024
<i>Pseudomonas aeruginosa</i>	1024	>1024	>1024
<i>Escherichia coli</i>	1024	>1024	>1024
<i>Klebsiella pneumoniae</i>	>1024	>1024	>1024
<i>Acinetobacter baumannii</i>	512	>1024	256
<i>Enterobacter cloacae</i>	1024	>1024	>1024

Figure S1. Minimum inhibitory concentrations (MICs) in mg/L of Kukoamine A (Kuk_A), caffeoylputrescine (CP), and N^1,N^5,N^{14} -tris(dihydrocaffeoyl)spermine (TDHCS) against listed bacterial strains.

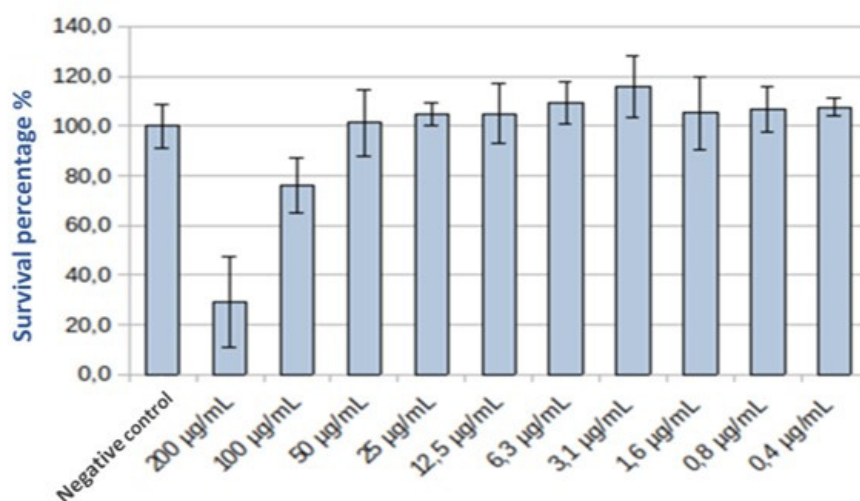


Figure S2. TDHCS cytotoxic activity on MCF-7 cells. Mean of eight points were calculated and standard deviation are represented.

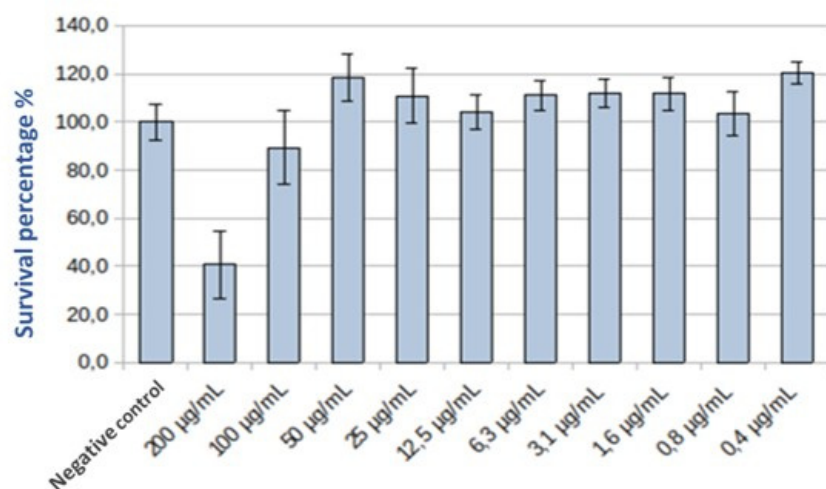


Figure S3. TDHCS cytotoxic activity on Caco-2 cells. Mean of eight points were calculated and standard deviation are represented.

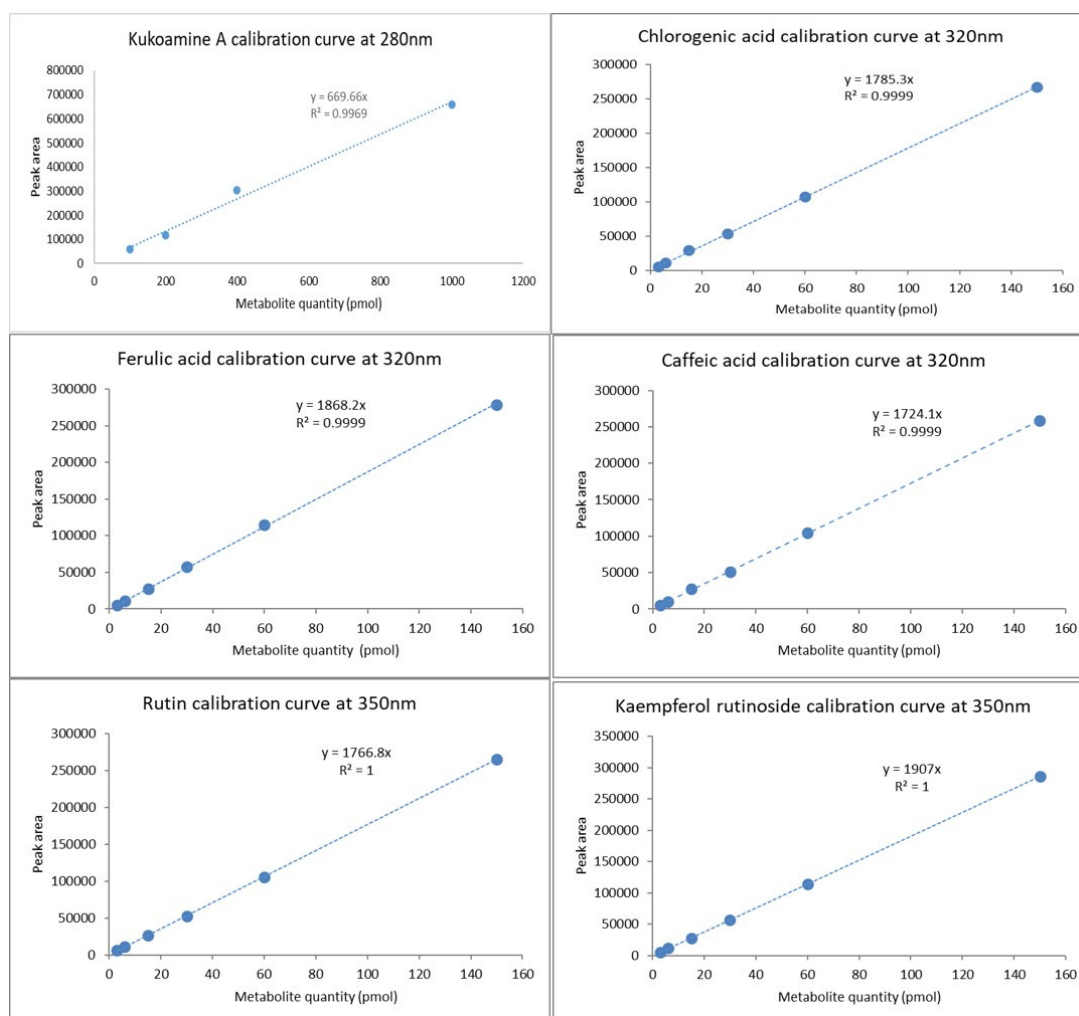


Figure S4. Calibration curves for metabolites quantification at specified wavelength