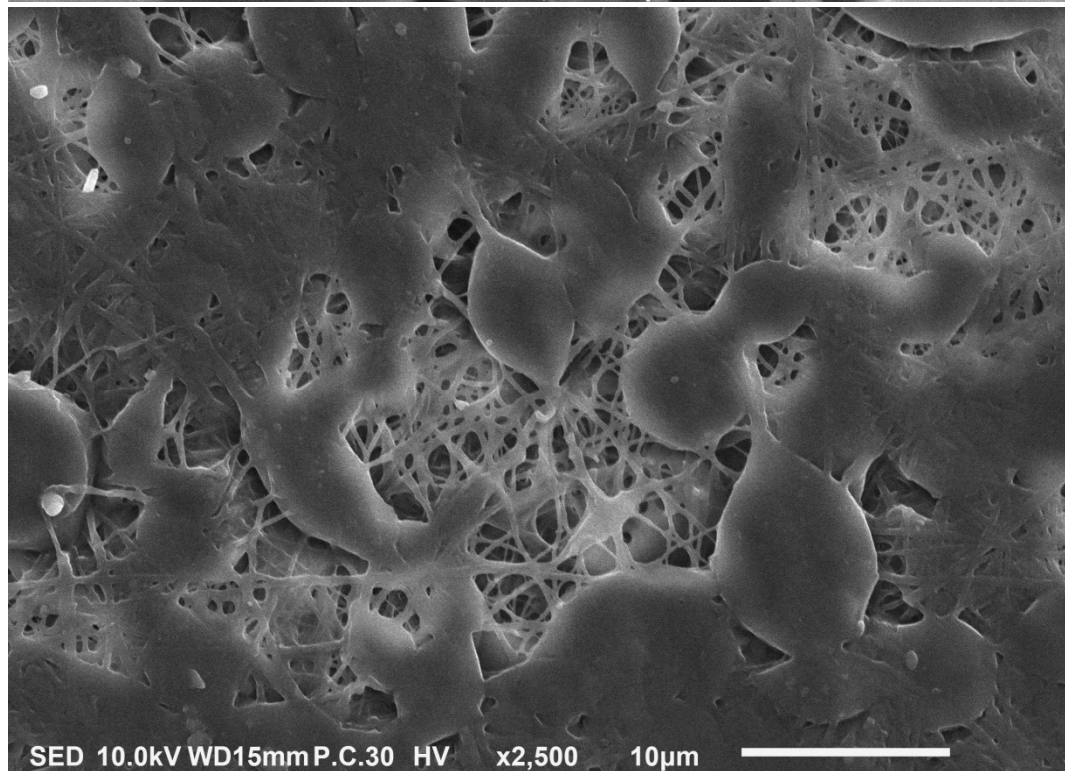
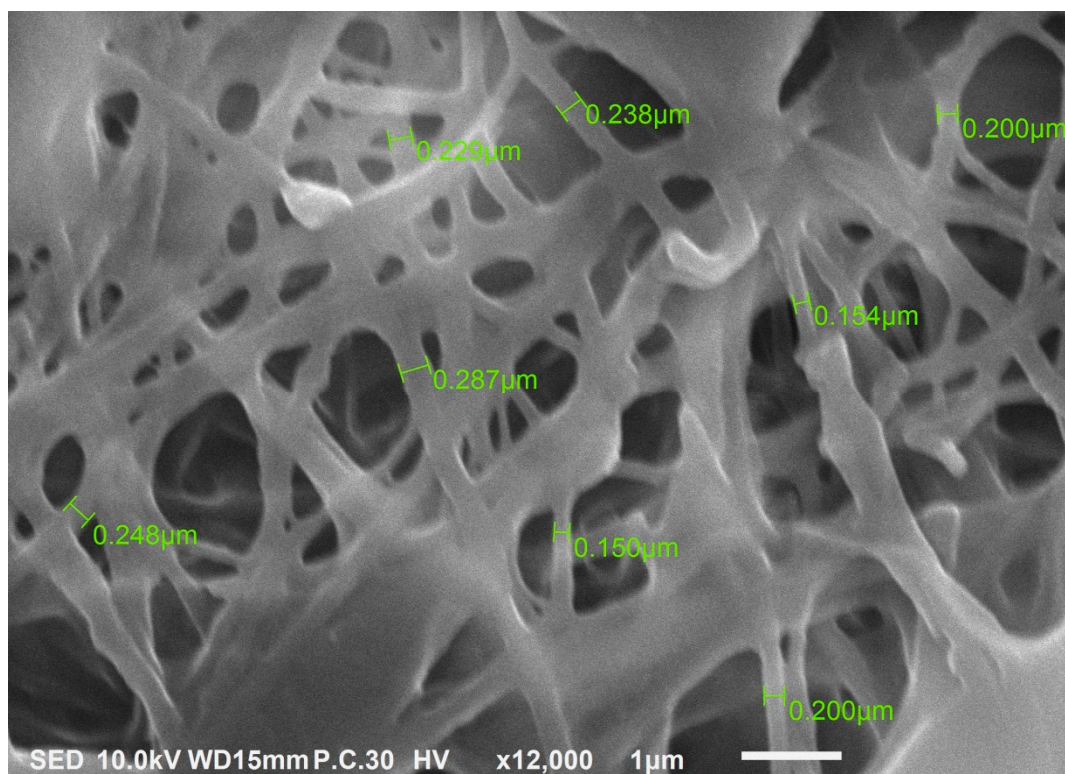


Figure S1. SEM images of the electrospun nanofibers **PU**.



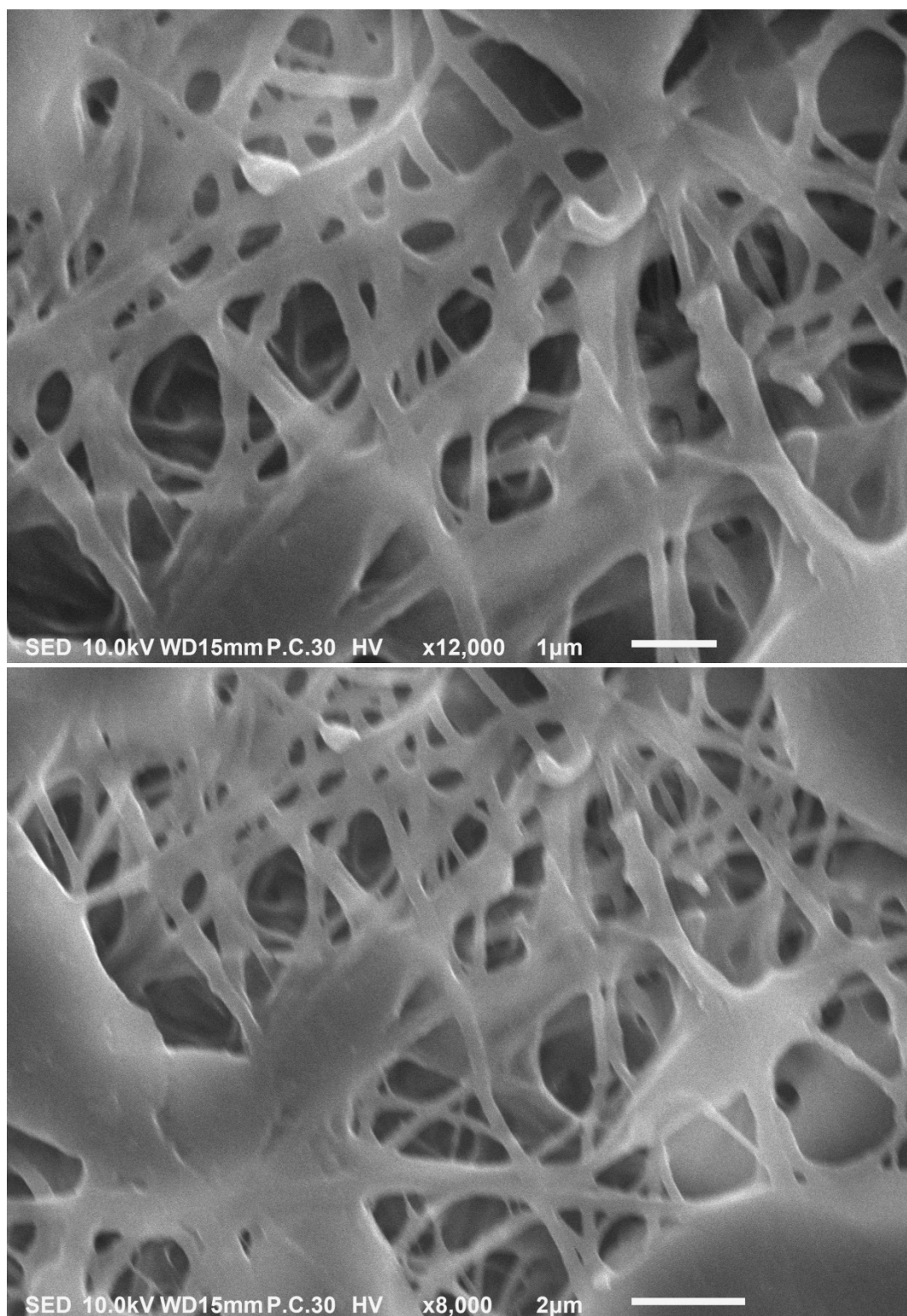
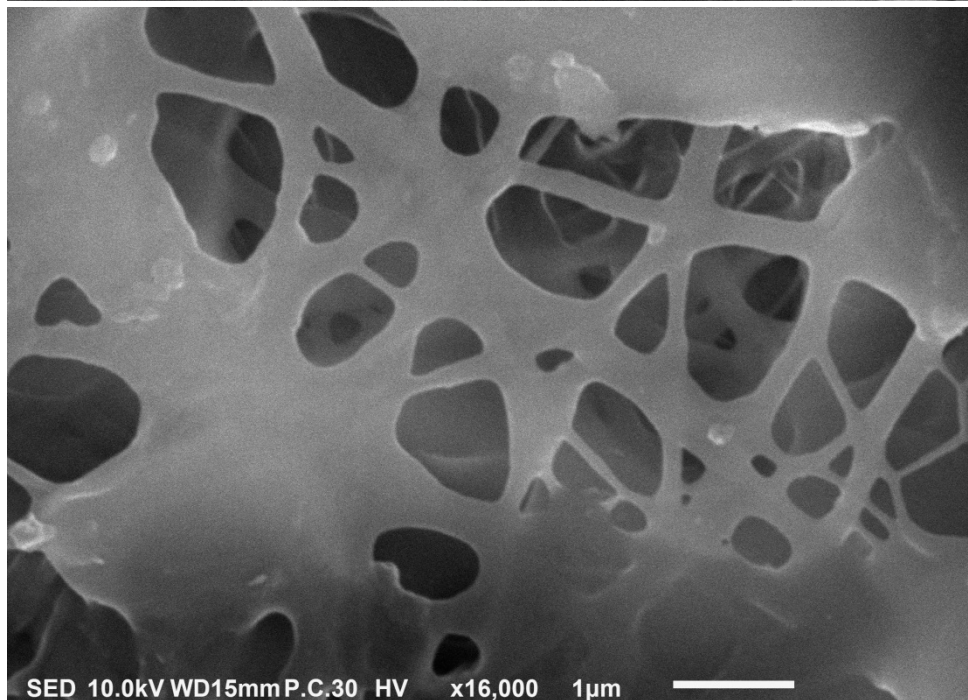
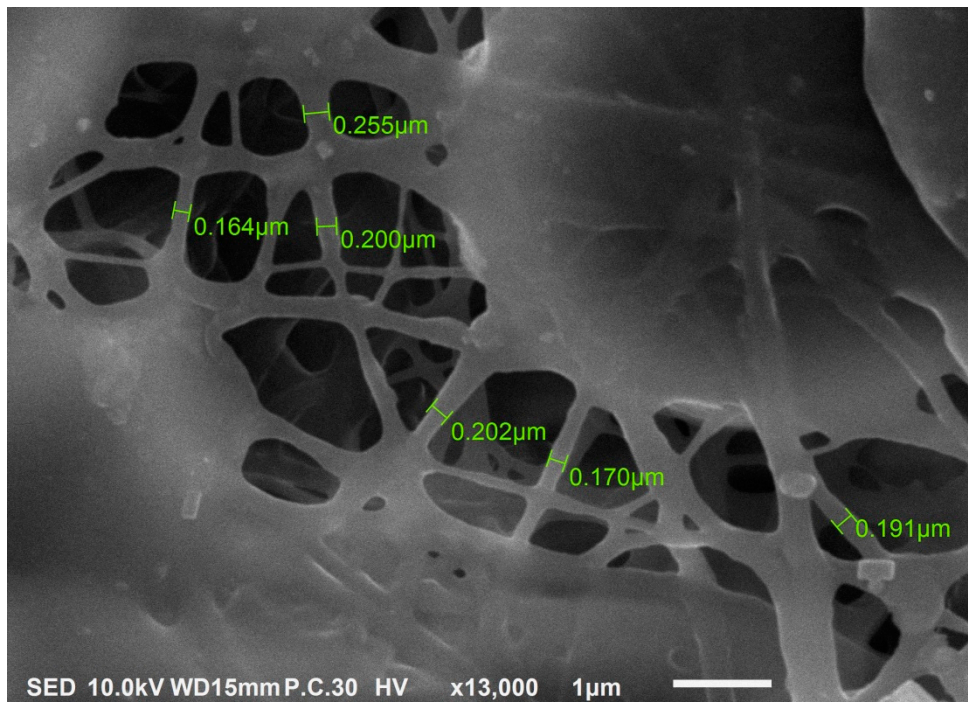
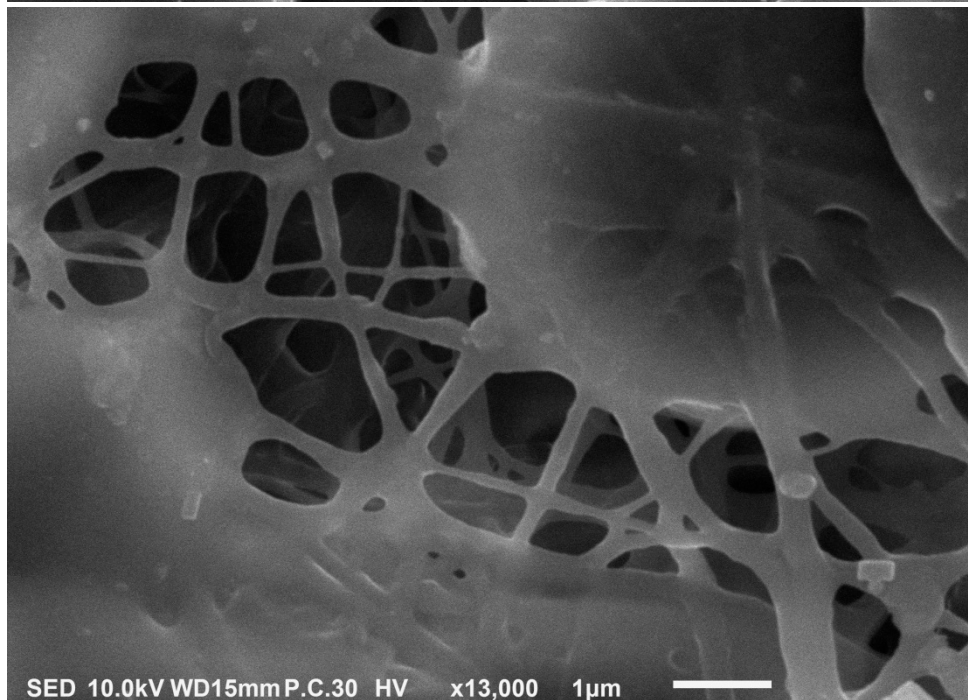
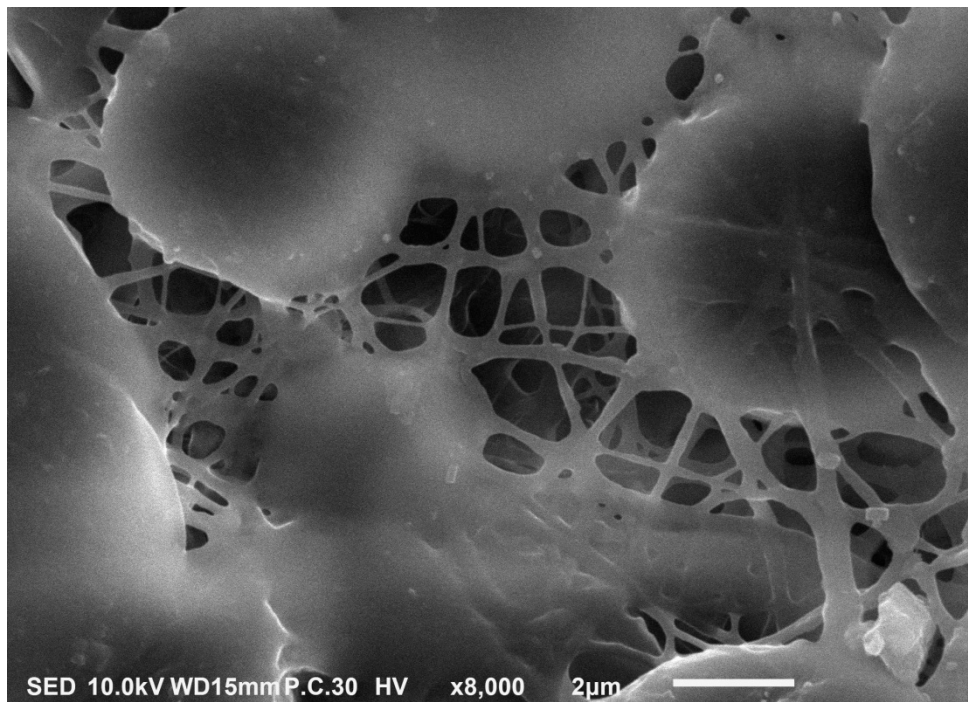


Figure S2. SEM images of the electrospun nanofibers **NF11**





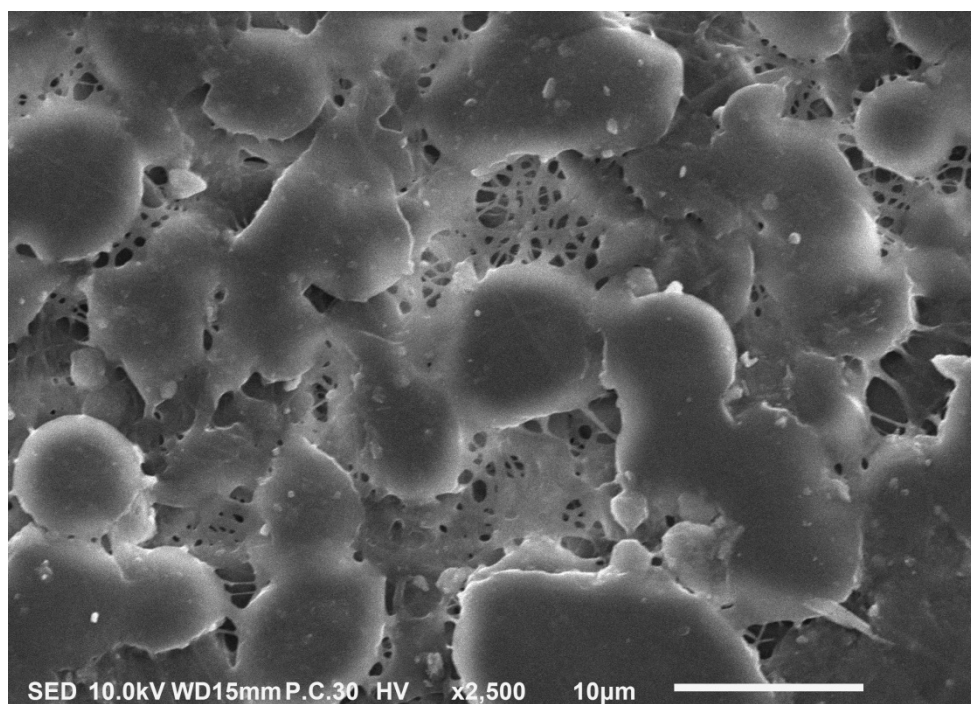


Figure S3. SEM images of the electrospun nanofibers **NF21**

Table S1. Tensile results of **PU**, **NF11** and **NF21** nanofibers.

Gauge Length (mm)	Width (mm)	Breadth (mm)	Area (mm ²)	Sample	Speed (mm/min)	Tensile Strength (MPa)	Young's Modulus (MPa)	Stain at Break (MPa)
20	10	0.025	0.25	NF11	2	14.97228613	39.02446197	9.153561181
20	10	0.03	0.3	NF11	2	14.28482108	38.09222654	9.285563161
20	10	0.035	0.35	NF11	2	18.25692774	60.83796882	9.102875727
20	10	0.165	1.65	PU	2	5.066446186	7.099307274	3.770019781
20	10	0.23	2.3	PU	2	4.905684152	9.664012301	2.634560679
20	10	0.25	2.5	PU	2	5.587143122	9.022896514	3.856163025
20	10	0.06	0.6	NF21	2	9.785045673	15.63562336	8.244864605
20	10	0.06	0.6	NF21	2	7.523199246	24.15903296	5.77640464
20	10	0.06	0.6	NF21	2	8.211512053	20.06515593	5.953748933