

# Supporting Information

## **Characterization of the Volatile Constituents of Plai (*Zingiber purpureum*) by Gas Chromatography–Mass Spectrometry**

Yuto Nishidono <sup>1,2,\*</sup>, Azis Saifudin <sup>3</sup> and Ken Tanaka <sup>1</sup>

1 College of Pharmaceutical Sciences, Ritsumeikan University, Kusatsu 525-8577,  
Shiga, Japan; ktanaka@fc.ritsumei.ac.jp

2 Research Organization of Science and Technology, Ritsumeikan University,  
Kusatsu 525-8577, Shiga, Japan

3 Faculty of Pharmacy, Universitas Muhammadiyah Surakarta, Sukoharjo 57102,  
Jawa Tengah, Indonesia; azis.saifudin@ums.ac.id

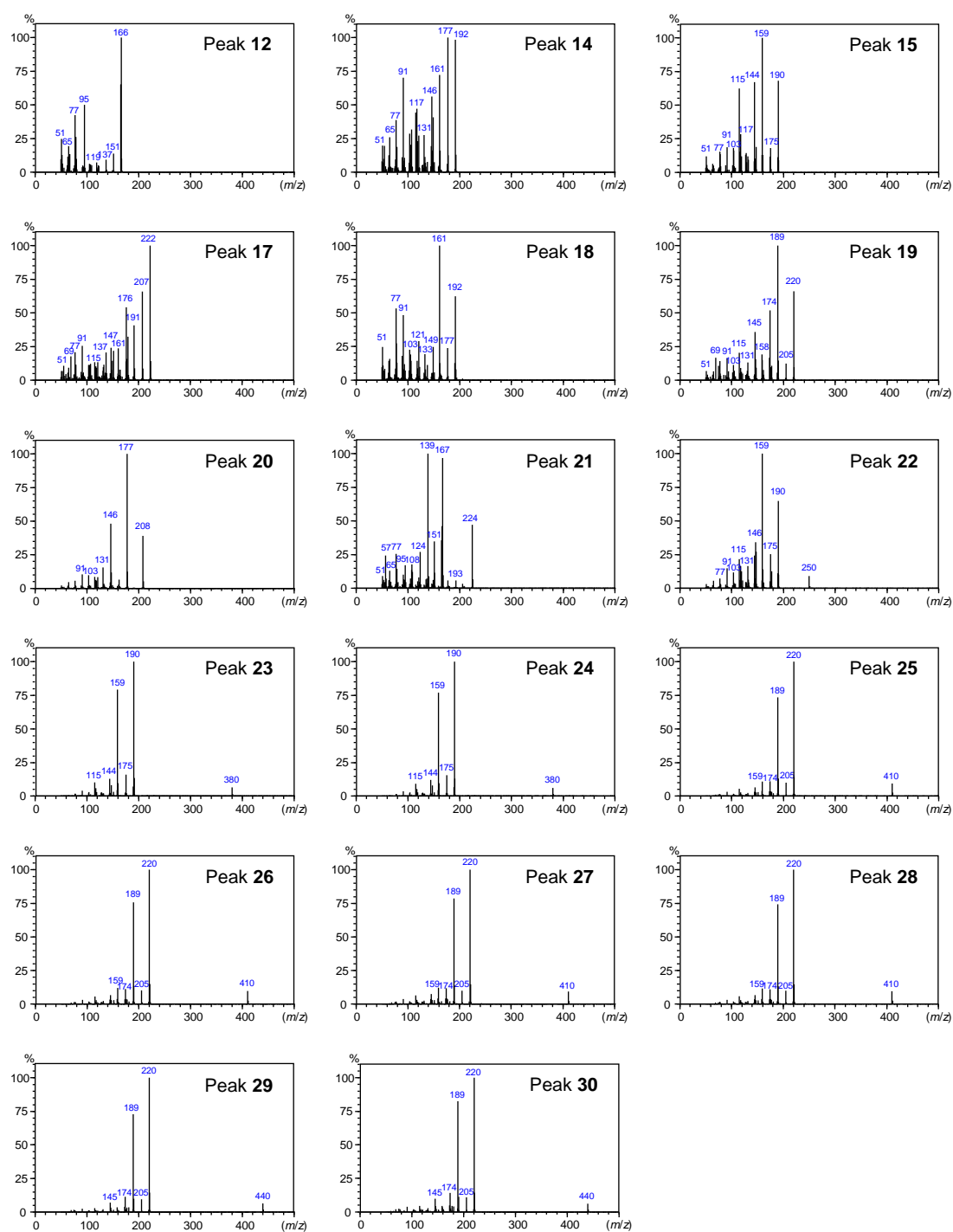
\* Correspondence: nisidono@fc.ritsumei.ac.jp; Tel.: +81-77-561-5179

## List of contents

<b>Table S1.</b> Relative contents (%) of major 30 compounds in ethyl acetate extracts derived from the rhizomes of plai purchased in Thailand and Indonesia.....	3
<b>Figure S1.</b> EI-MS spectra of isolated compounds. ....	4

**Table S1.** Relative contents (%) of major 30 compounds in ethyl acetate extracts derived from the rhizomes of plai purchased in Thailand and Indonesia.

Peak	Compounds Annotated or Identified via This Study	Relative contents (%)	
		Thailand	Indonesia
1	$\alpha$ -Thujene (1)	1.1	
2	$\alpha$ -Pinene (2)	1.0	
3	Sabinene (3)	10.9	
4	$\beta$ -Pinene (4)	1.9	
5	Myrcene (5)	0.9	
6	$\alpha$ -Terpinene (6)	1.4	
7	<i>p</i> -Cymene (7)	3.2	
8	$\gamma$ -Terpinene (8)	2.1	
9	<i>trans</i> -4-Thujanol (9)	0.8	
10	<i>cis</i> -4-Thujanol (10)	0.8	
11	Terpinen-4-ol (11)	8.3	
12	3,4-Dimethoxybenzaldehyde (12)		7.8
13	$\beta$ -Sesquiphellandrene (13)	1.9	
14	( <i>E</i> )-1-(3',4'-Dimethoxyphenyl)but-1-ene (14)	1.3	
15	( <i>E</i> )-1-(3',4'-Dimethoxyphenyl)buta-1,3-diene (15)	5.9	
16	Xanthorrhizol (16)		4.5
17	( <i>E</i> )-1-(2',4',5'-Trimethoxyphenyl)but-1-ene (17)	1.0	
18	( <i>E</i> )-3-(3',4'-Dimethoxyphenyl)propenal (18)		6.2
19	( <i>E</i> )-1-(2',4',5'-Trimethoxyphenyl)buta-1,3-diene (19)	2.9	
20	( <i>E</i> )-4-(3',4'-Dimethoxyphenyl)but-3-en-1-ol (20)	9.4	21.5
21	Cassumunol H (21)		8.5
22	( <i>E</i> )-4-(3',4'-Dimethoxyphenyl)but-3-en-1-yl acetate (22)	4.2	12.5
23	<i>cis</i> -Banglene (23)	7.6	4.2
24	<i>trans</i> -Banglene (24)	9.4	24.4
25	2'-Methoxy <i>cis</i> -banglene (25)	3.1	
26	2'-Methoxy <i>trans</i> -banglene (26)	3.0	
27	2'''-Methoxy <i>cis</i> -banglene (27)	3.0	
28	2'''-Methoxy <i>trans</i> -banglene (28)	4.5	
29	2', 2'''-Dimethoxy <i>cis</i> -banglene (29)	3.7	
30	2', 2'''-Dimethoxy <i>trans</i> -banglene (30)	1.9	



**Figure S1.** EI-MS spectra of isolated compounds.