

Figure S1: Effect of AdoMet on cell cycle in U251MG cells.

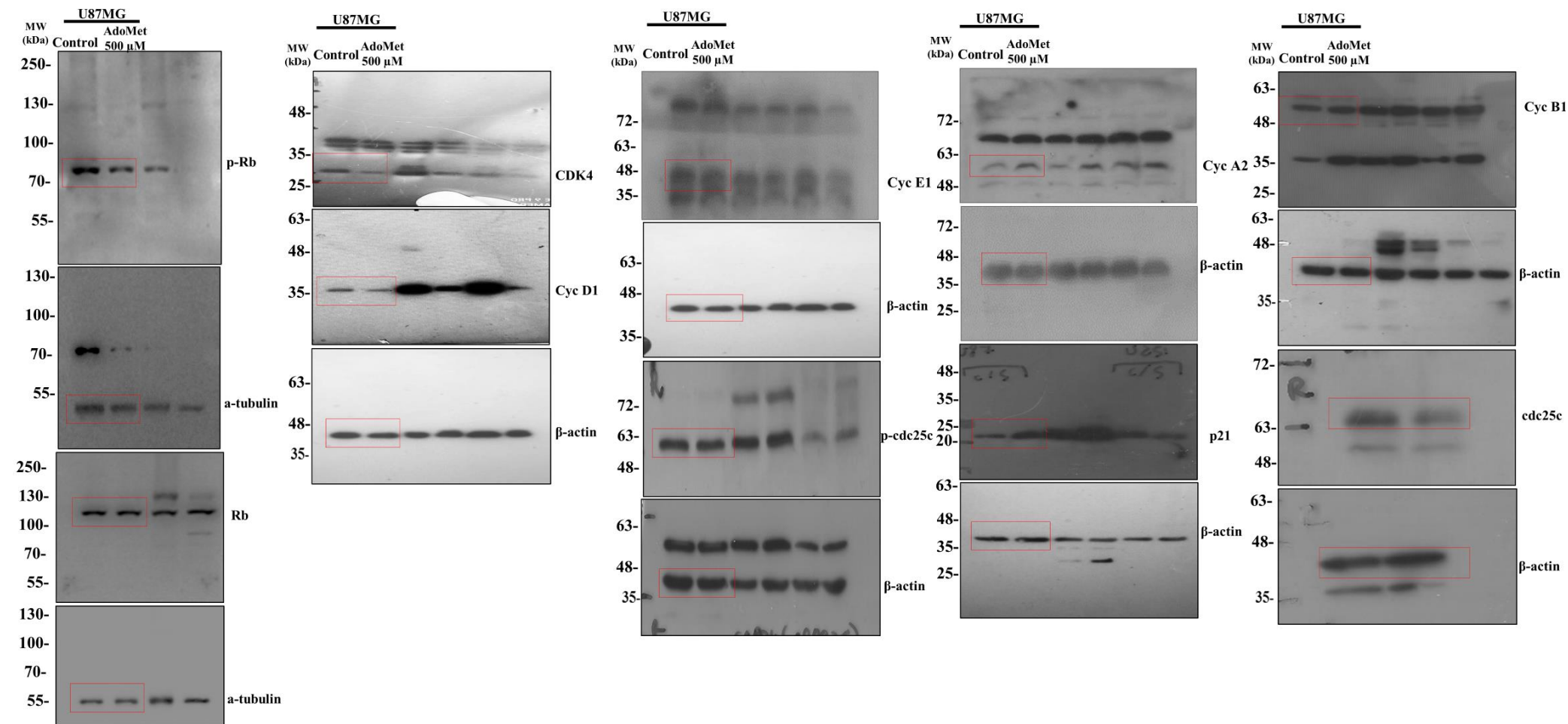


Figure S2: Effect of AdoMet on cell cycle in U87MG cells.

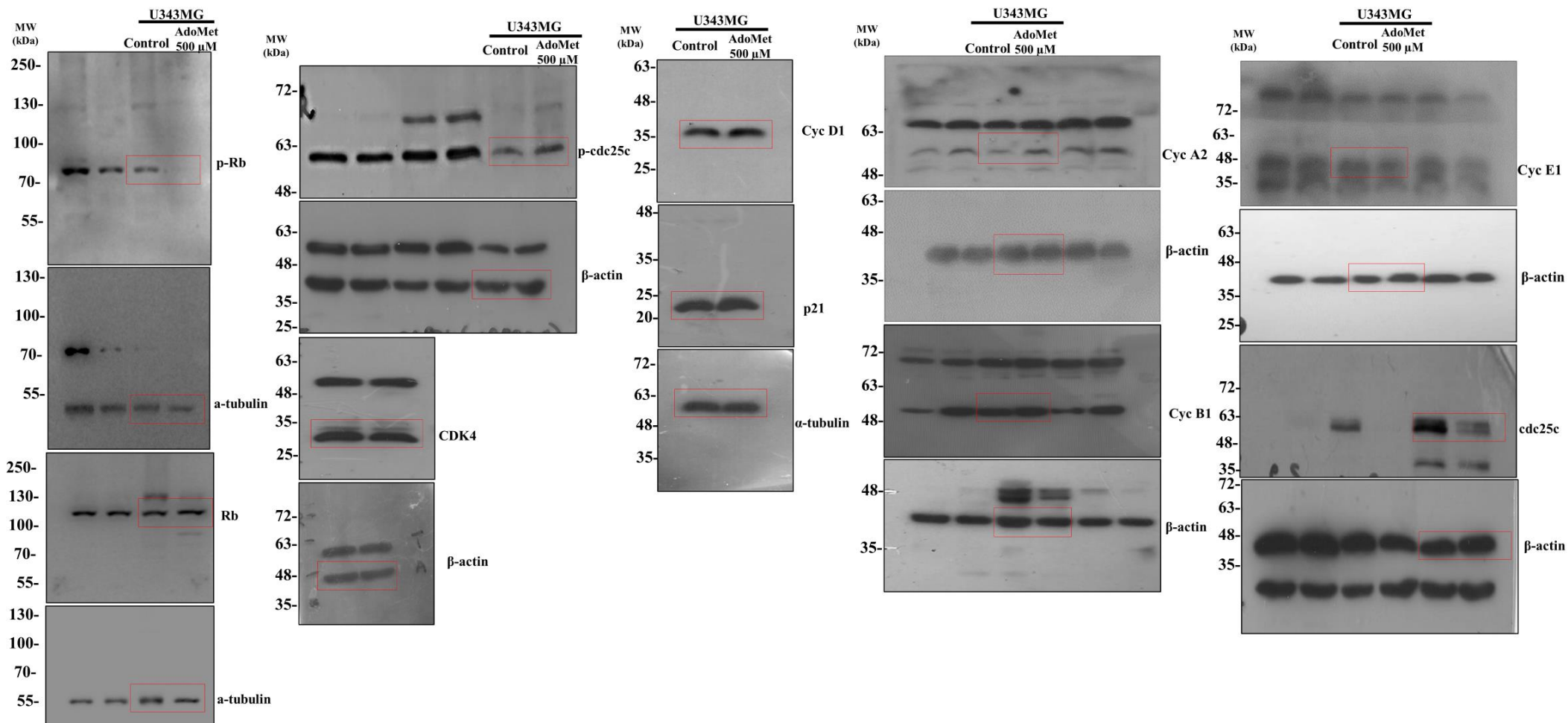


Figure S3: Effect of AdoMet on cell cycle in U343MG cells.

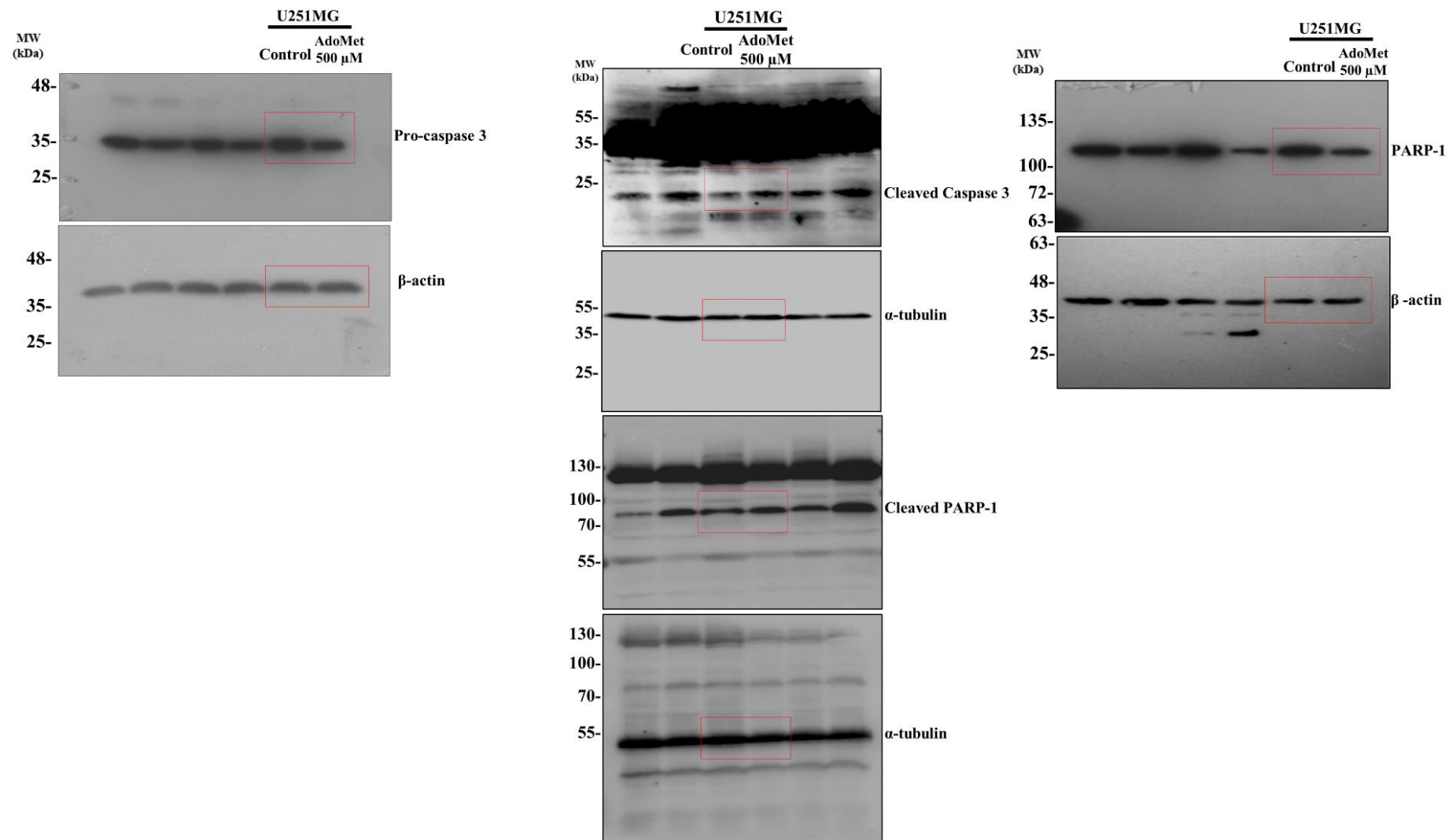


Figure S4: Effect of AdoMet on apoptosis in U251MG cells.

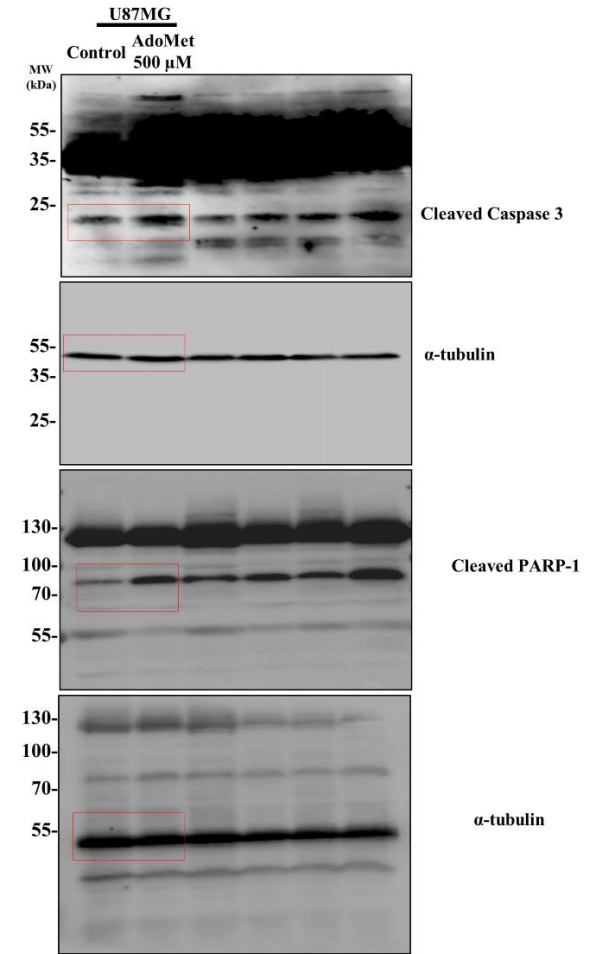
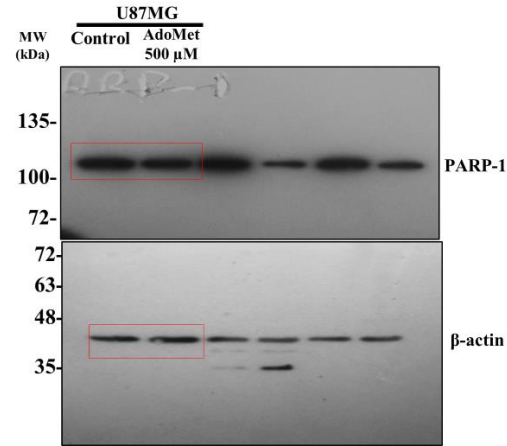
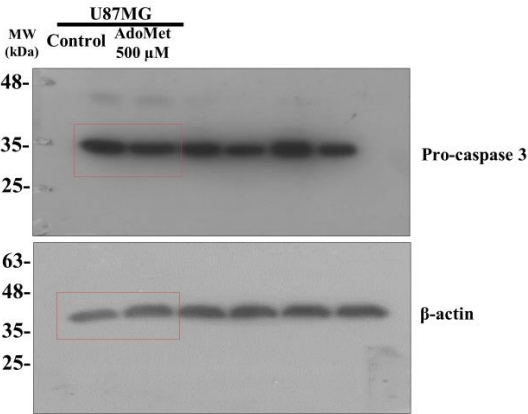


Figure S5: Effect of AdoMet on apoptosis in U87MG cells.

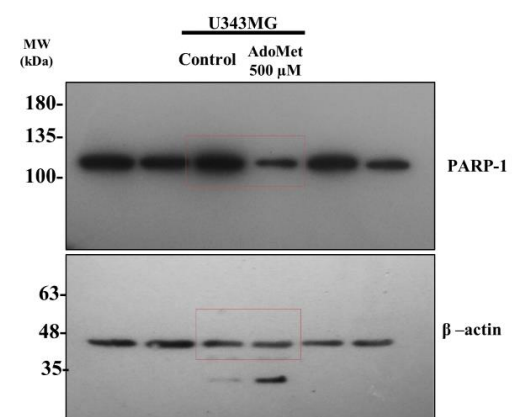
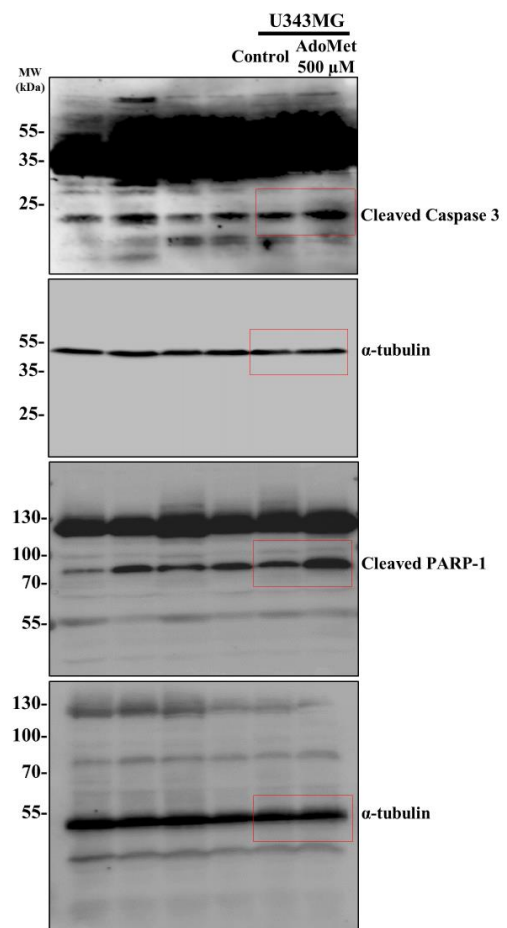
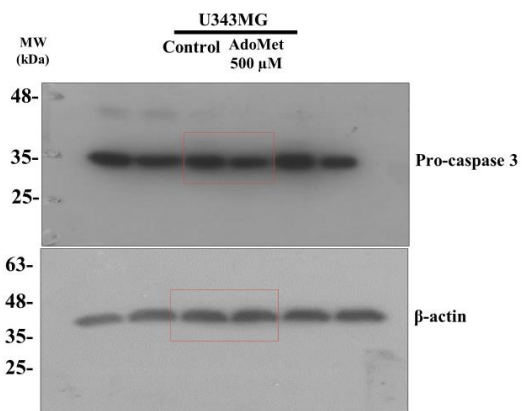


Figure S6: Effect of AdoMet on apoptosis in U343MG cells.

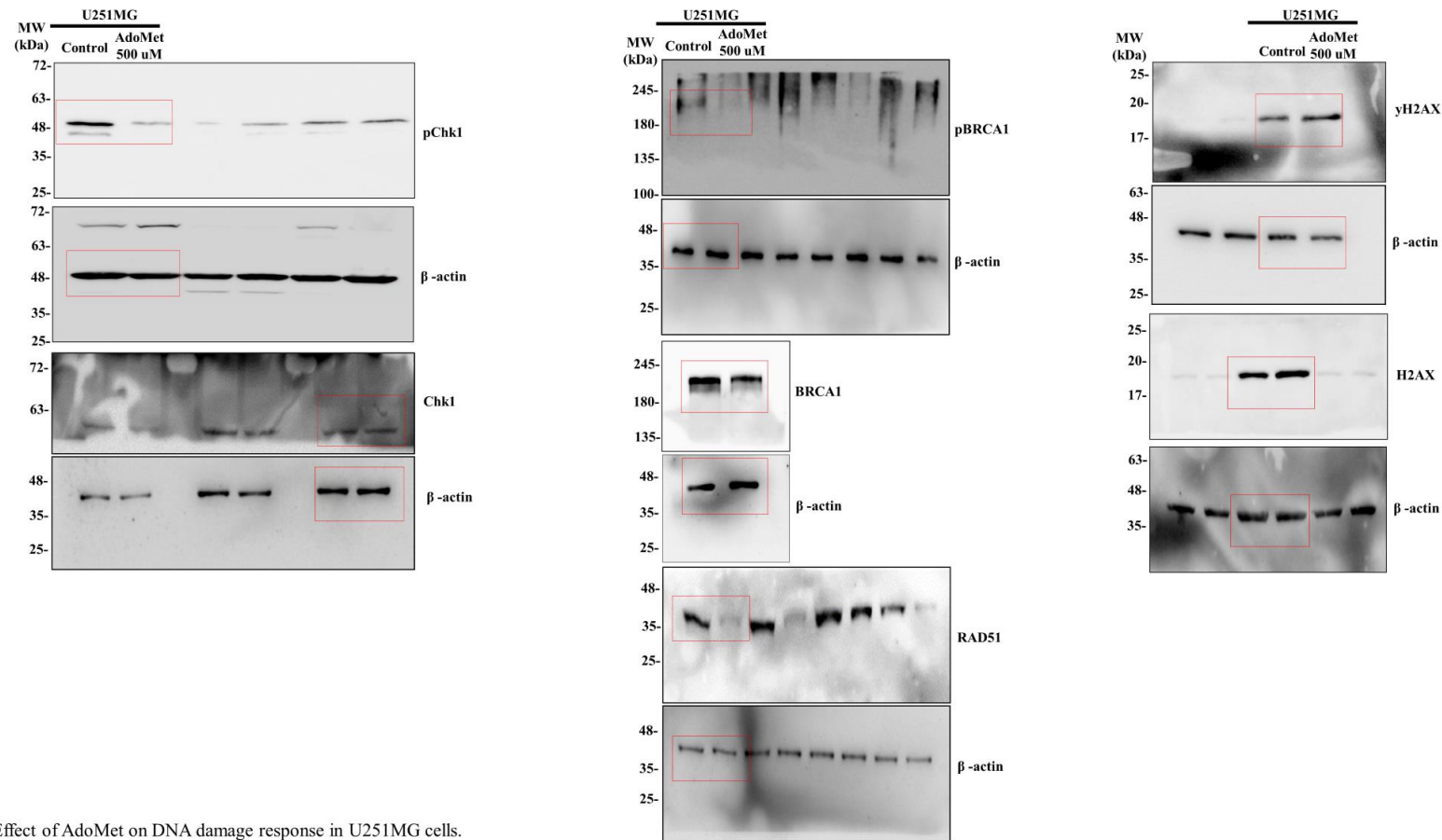


Figure S7: Effect of AdoMet on DNA damage response in U251MG cells.

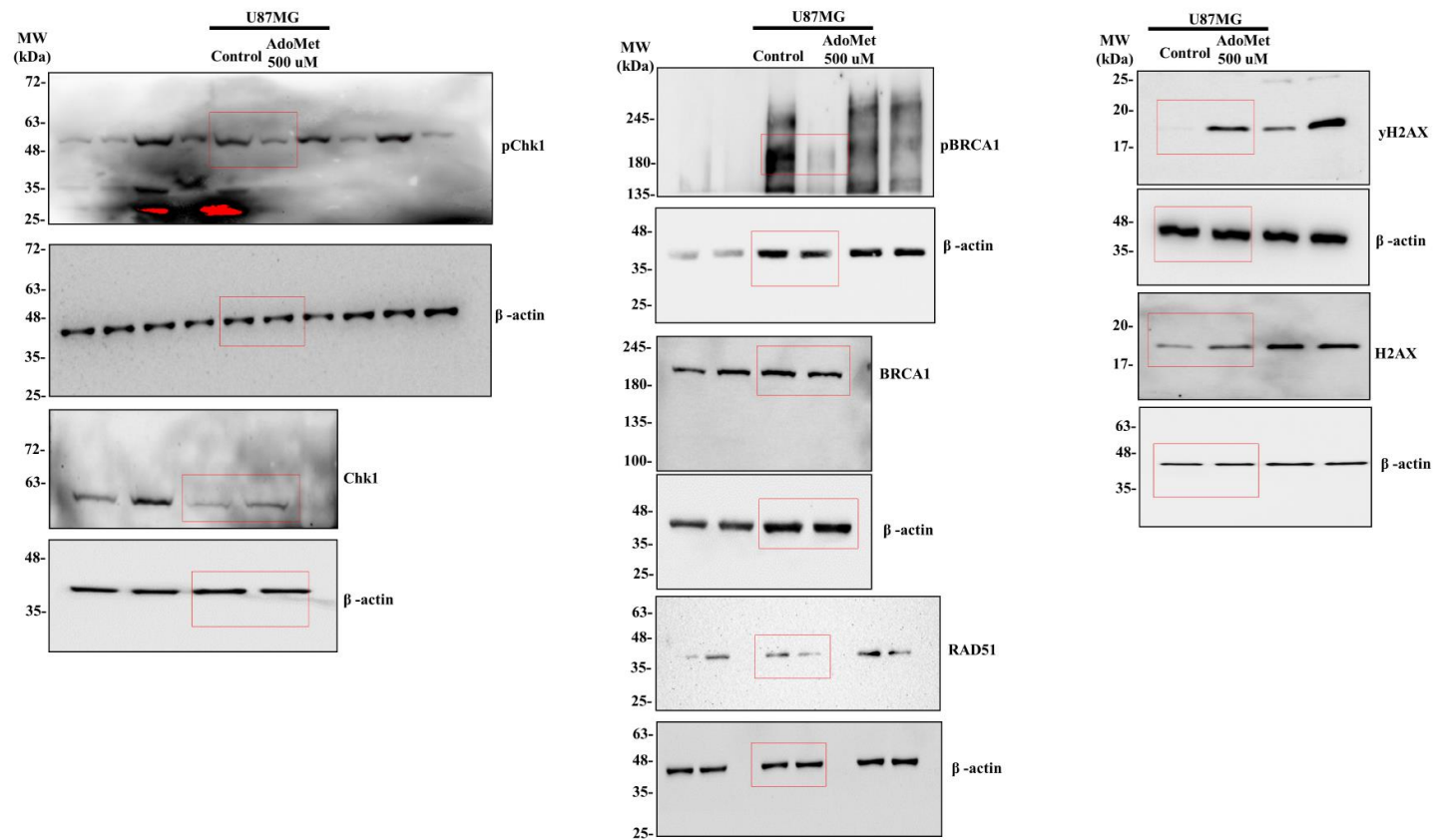


Figure S8: Effect of AdoMet on DNA repair in U87MG cells.

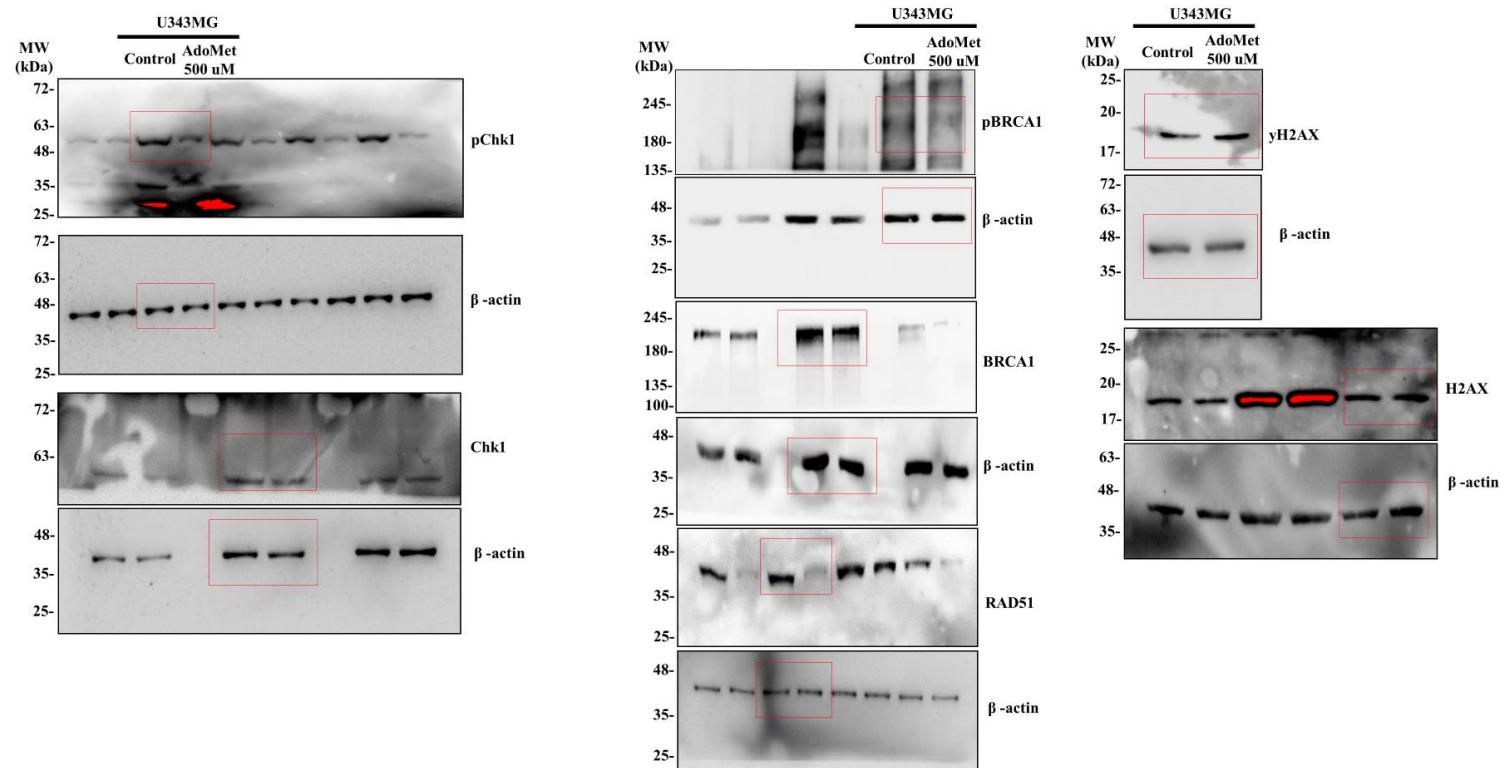


Figure S9: Effect of AdoMet on DNA repair in U343MG cells.

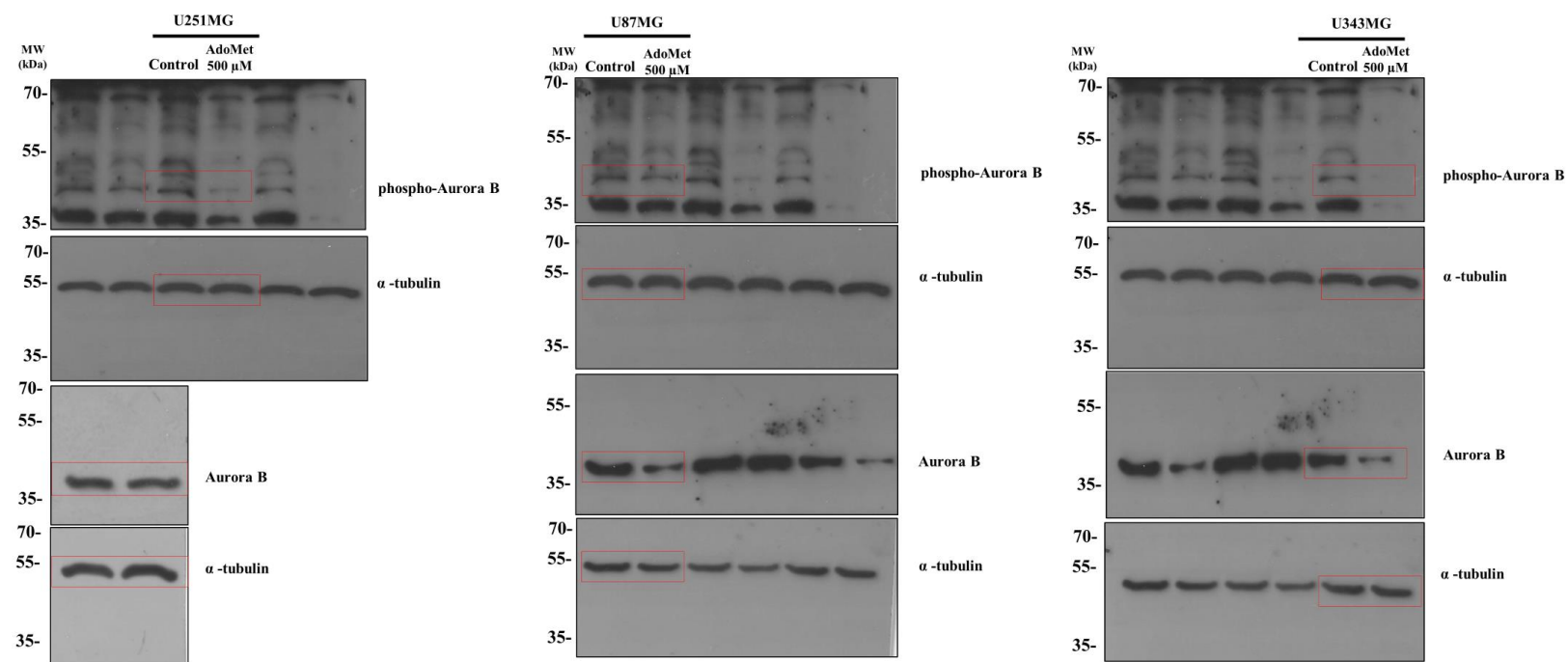


Figure S10: Effect of AdoMet on phospho-AuroraB and Aurora B in U251MG, U87MG, and U343MG cell lines.

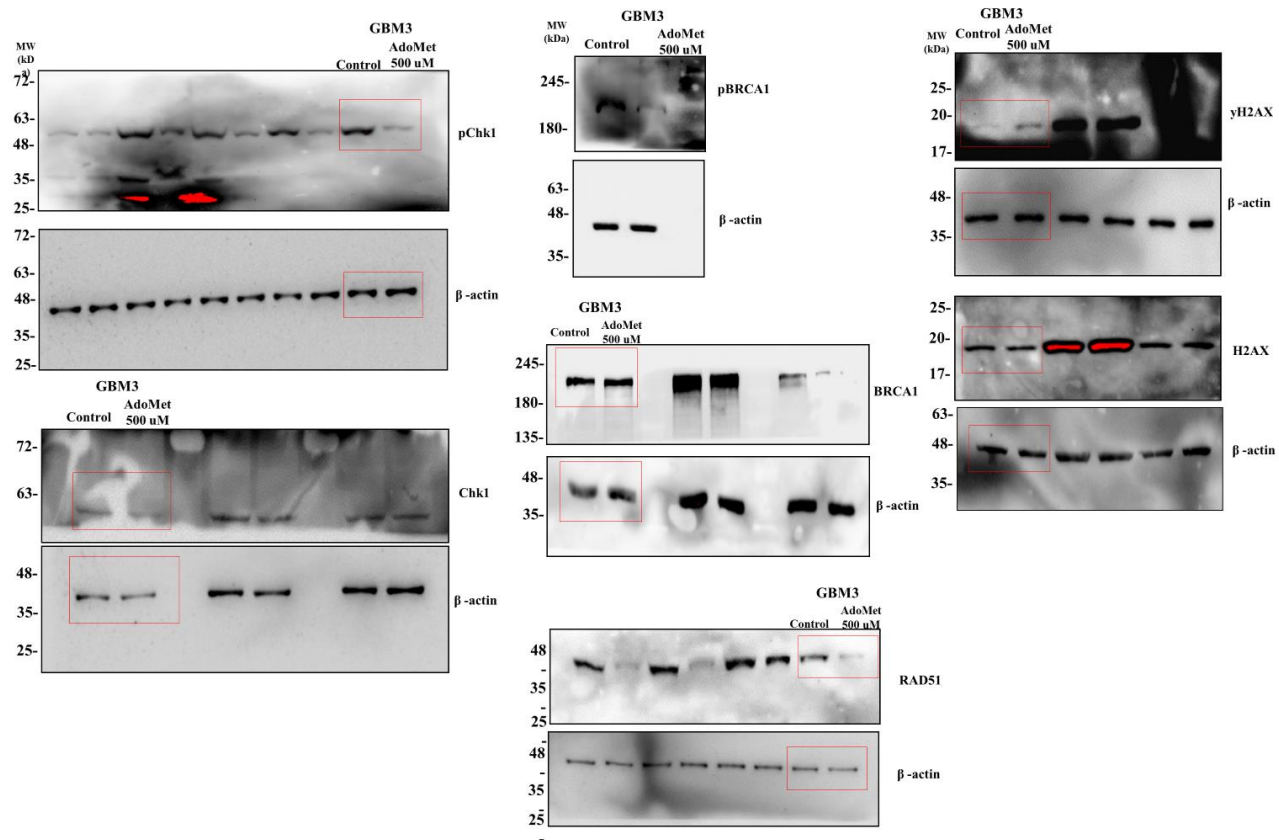


Figure S11: Effect of AdoMet on DNA repair in GBM3 primary cell line.

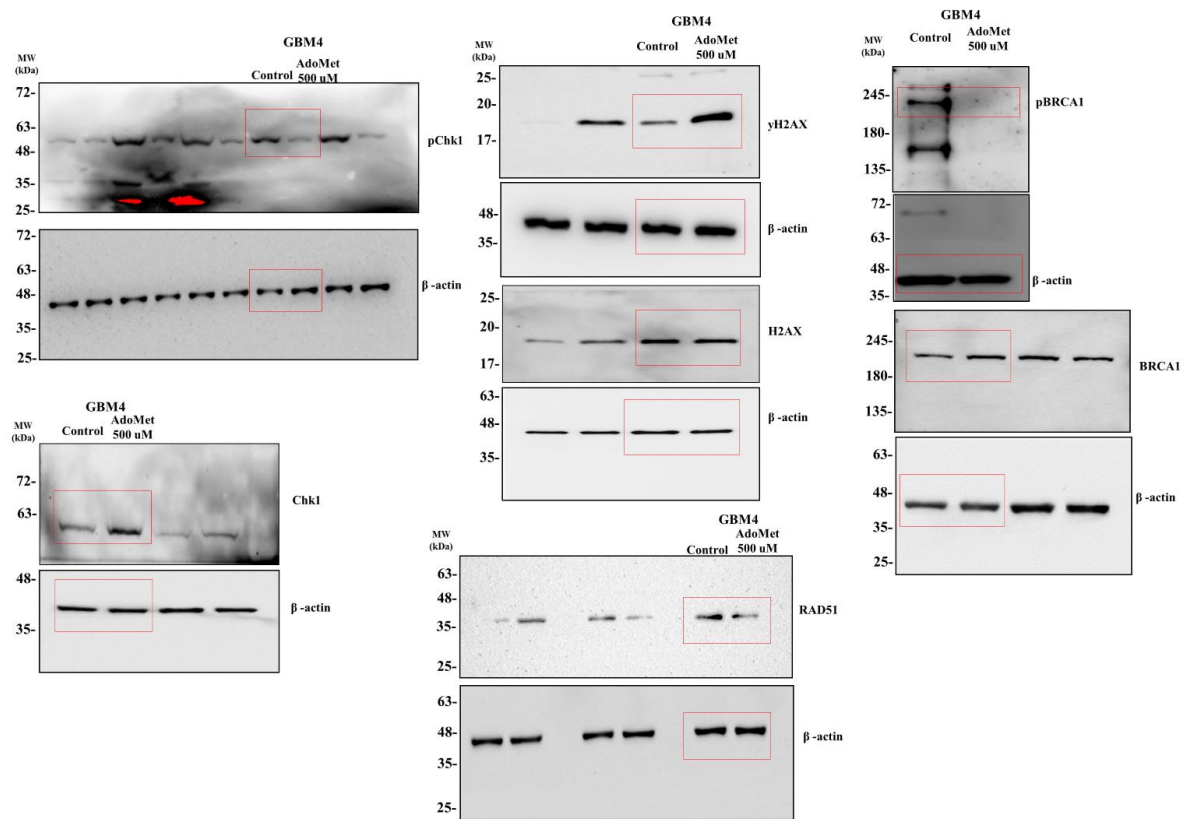


Figure S12: Effect of AdoMet on DNA repair in GBM4 primary cell line.